



WORLDWIDE ELECTRIC MOTOR DATA SHEET

PEWWE30-9-364T



HORSEPOWER	30		
RPM / POLES	900 / 8		
VOLTAGE / PHASE	230 / 460 V / 3		
FRAME	364T		
ENCLOSURE / DEGREE OF PROTECTION	TEFC / IP55		
FREQUENCY	60 HZ Suitable For 50 HZ Operation With 1.0 SF		
FULL LOAD SPEED	885 RPM		
SERVICE FACTOR	1.15		
INSULATION CLASS	F		
FULL LOAD AMPS; 230 / 460	81.7 / 40.8 A (Usable On 208V At 90.3 A)		
LOCKED ROTOR AMPS (STARTING); 230 / 460	435 / 217.5 A		
NO LOAD CURRENT	38 / 19 A		
NEMA CODE LETTER	G		
EFFICIENCY / POWER FACTOR	<u>LOAD</u>	<u>EFF.</u>	<u>P.F.</u>
	100 %	91.7%	0.75
	75 %	91.9%	0.71
	50 %	91.2%	0.61
DUTY CYCLE	S1 / Continuous		
TORQUE	<u>FULL LOAD</u>	<u>LRT</u>	<u>BDT</u>
	178 lb.ft.	150%	200%
SLIP	1.67 %		
NEMA DESIGN	B		
MOMENT OF INERTIA	18.8 lb.ft. ²		
MAX. TIME LOCKED ROTOR (Hot)	25 Seconds		
SOUND PRESSURE LEVEL	68 dB (A)		
MAX. AMBIENT TEMPERATURE	40° C		
MAX. ELEVATION	3300 Ft.		
TEMPERATURE RISE (At Full Load)	80° C		
DE BEARING	6313 C3		
ODE BEARING	6312 C3		
REGREASING INT. - DE BEARING	5100 Hours		
REGREASING INT. - ODE BEARING	6800 Hours		
GREASE TYPE	SKF LGHP 2		
MOUNTING	F1 (F2 Suitable)		
ROTATION	Bi-Directional		
SHAFT MATERIAL	1045 Carbon Steel		
INVERTER RATING	10:1 CT / 20:1 VT PWM Type		
CONNECTION DIAGRAM	230 / 460 V - 12 Lead Δ		
AREA CLASSIFICATION	Class I, Division 2, Groups A, B, C, D		
APPROXIMATE WEIGHT	731 lbs.		



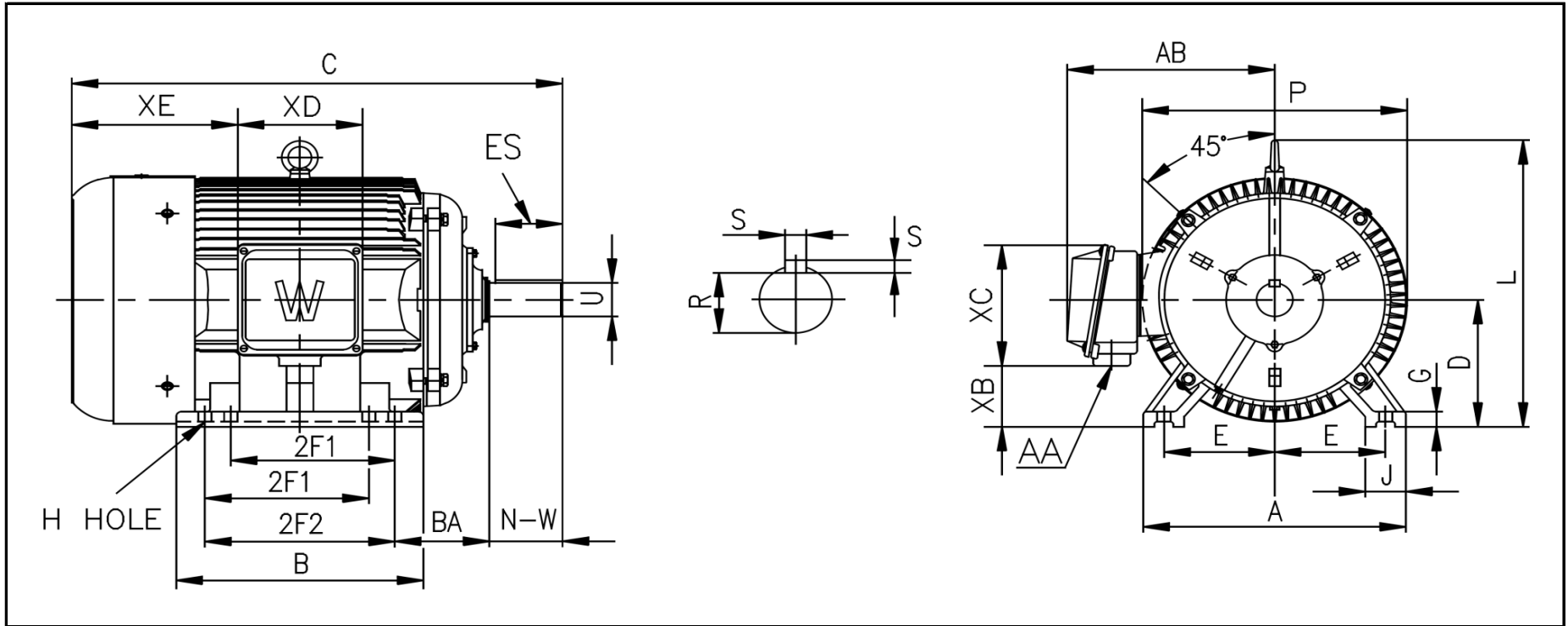
CC006A





WORLDWIDE ELECTRIC MOTOR DRAWING

PEWWE-364T



DIMENSIONS - INCHES

MOUNTING					A	B	C	D	G	J	P	L	AB
E	2F1	2F2	H	BA									
7	-	11.25	0.66	5.88	18	15	32.6	9	1.18	3	19.1	18.8	16.5

KEY		KEYSET	SHAFT		TERMINAL BOX				
S	ES	R	N-W	U	AA	XB	XC	XD	XE
0.625	4.28	2.021	5.88	2.375	3	3.8	10.8	9	11.51