

# Product Information Packet

November 8, 2016

Data shown is for the current revision model #. Ensure your nameplate model # matches.

<b>Model Number:</b>	<b>5KS286STE205RG3</b>
<b>Catalog Number:</b>	<b>M7569</b>
<b>Instruction Manual:</b>	GEI-M1031
<b>Connection Diagram:</b>	GEM2034E-FIG210
<b>Outline Drawing:</b>	358B6273AG

Accessory Connection Diagrams			
<b>Bearing Thermocouple:</b>	None	<b>Heater:</b>	None
<b>RTD:</b>	None	<b>Thermistor:</b>	None
<b>Thermostat:</b>	None	<b>Winding Thermocouple:</b>	None
<b>Bearing RTD:</b>	None		

Table of Contents	
Specification	01
Performance Characteristics	02
Outline Drawing	03
Connection Drawing(s)	04

**Marks:**

<b>MODEL NUMBER:</b>	<b>5KS286STE205RG3</b>	<b>Estimated Weight:</b>	450 Lbs
<b>Outline Drawing:</b>	358B6273AG	<b>Time Rating:</b>	CONT
<b>Connection Diagram:</b>	GEM2034E-FIG210	<b>Enclosure:</b>	TEFC
<b>Instruction Book:</b>	GEI-M1031	<b>Encl Construction:</b>	SD
<b>Design Code:</b>	28AD1018A	<b>Ambient Max(°C):</b>	40
<b>Type:</b>	KS	<b>Alt Ambient Max(°C):</b>	--
<b>Frame:</b>	286T	<b>Insulation Class:</b>	F
<b>Phases:</b>	3	<b>NEMA Design:</b>	B
<b>Poles:</b>	4	<b>Nominal Efficiency:</b>	93.6 %
<b>Output Power:</b>	30HP 22.2KW	<b>Guaranteed Efficiency:</b>	92.4
<b>RPM:</b>	1775	<b>3/4 Load Efficiency:</b>	94.5
<b>Voltage:</b>	230/460	<b>KVA Code:</b>	G
<b>Hertz:</b>	60	<b>Max KVAR:</b>	8.4
<b>Amps - FL:</b>	71.8/35.9	<b>Power Factor:</b>	83.5
<b>Service Factor:</b>	1.15	<b>Bearing - DE:</b>	6310ZZ
<b>Alt Service Factor:</b>	--	<b>Bearing - ODE:</b>	6210ZZ

**Enclosure is Totally Enclosed Fan-Cooled**

---

**Stamped Nameplate Notes:**

USABLE AT 200V @ 30 HP, 81.7 AMPS @ 1.0 SF

LRA: 429.2/214.6

50HZ DATA: 25 HP,200/400V,79.2/39.6 AMPS @ 1.15 SF

50HZ DATA: 30 HP,200/400V,82.6/41.3 AMPS @ 1.00 SF

GREASE TYPE: SHELL ALVANIA R3 LITHIUM GREASE

**Additional Information:**

CONDUIT BOX VOLUME (CU IN): 272.9

CONDUIT BOX MATERIAL: CAST IRON

INVERTER DUTY PER NEMA MG1 PART 31

FOR VARIABLE TORQUE LOADS

BAM 1/12



**Performance Characteristics**

1st Winding 1st Connection

**Design: 28AD1018A**

**Marks:**

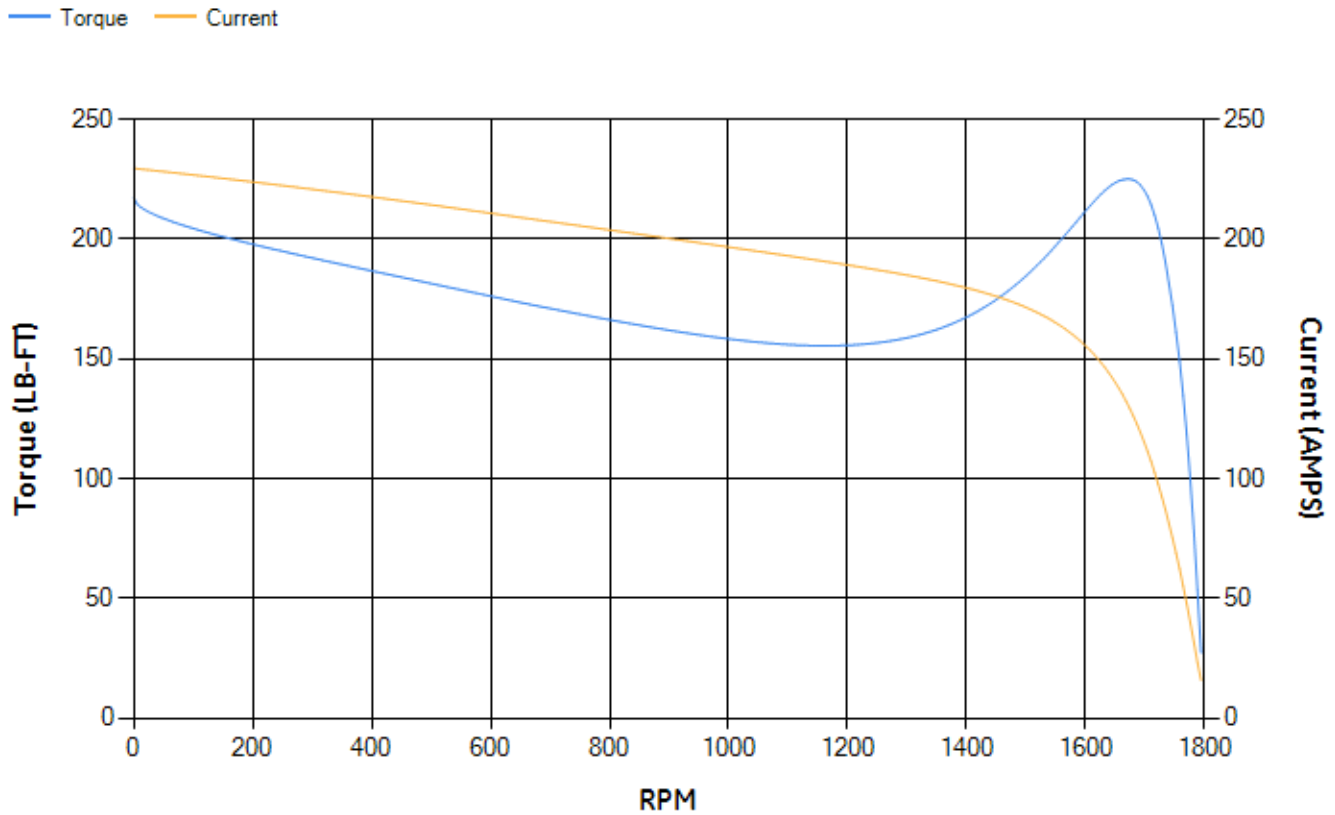
LOAD %	125.0	115.0	100.0	75.0	50.0	25.0	0.0
% EFF	93.25	93.61	94.24	94.46	94.17	91.5	0.00
% PF	84.25	84.23	83.7	80.88	73.17	52.63	4.79
AMPS	44.68	40.95	35.6	27.57	20.38	14.58	11.61

<b>TORQ(FL)#FT</b>	88.82	<b>TORQ(LR)%FL</b>	244.64	<b>TORQ(BD)%FL</b>	252.5
<b>AMPS(LR)</b>	229.54	<b>PF AT START</b>	0.4		

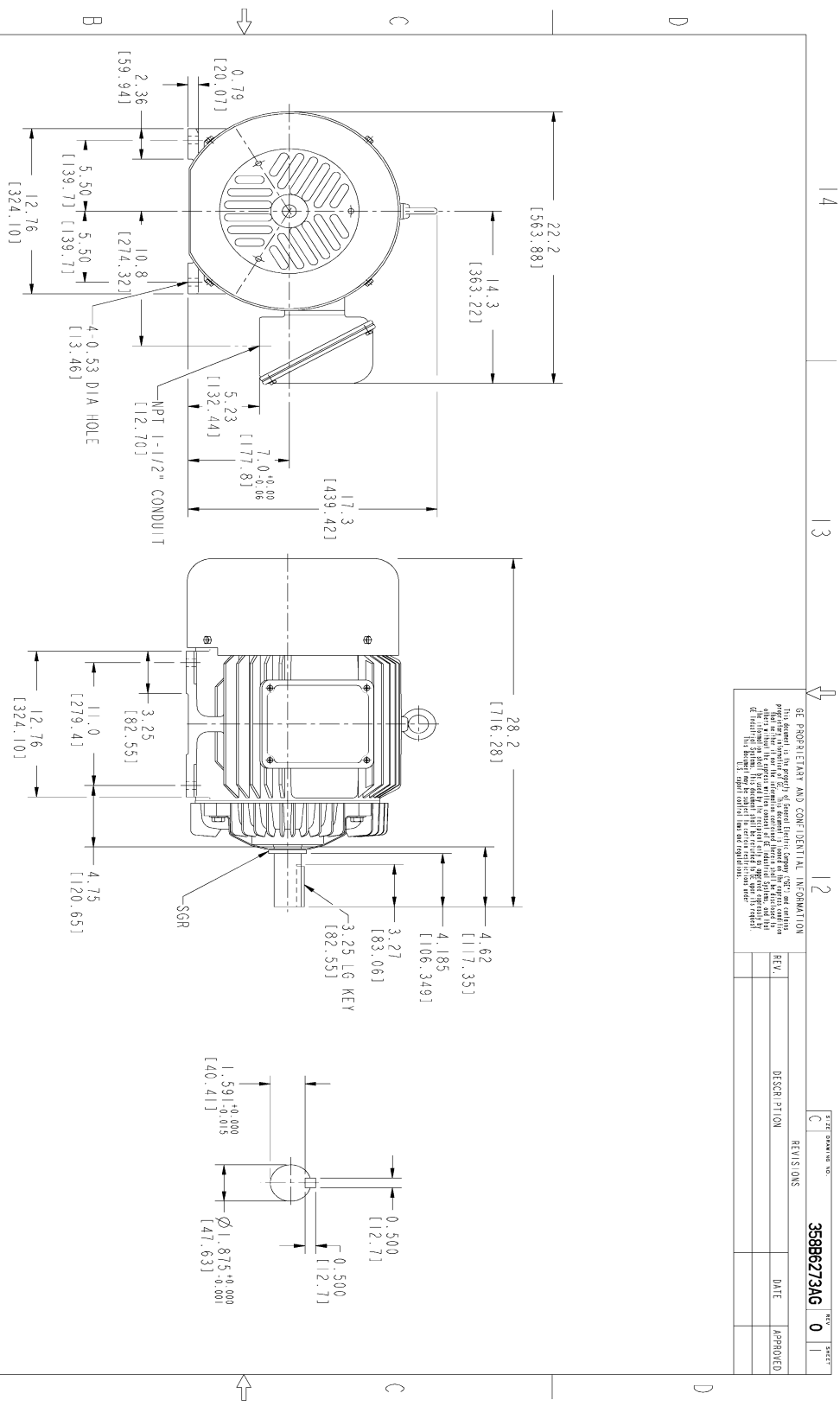
This motor is capable of two cold or one hot start with a maximum connected load inertia of 1023 Lb-Ft Sq (43.07 Kg-meter Sq)at 100% voltage, where the load torque varies with the square of the speed. Acceleration time with maximum inertia and the above load type is 40 seconds. Safe stall time at 100% voltage is 68 seconds cold, 48 seconds hot. Rotor inertia is 4.9 Lb-Ft Sq (0.21 Kg-meter Sq).

<b>Open Circuit A-C:</b>	0.546	<b>Short Circuit D-C:</b>	0.021
<b>Short Circuit A-C:</b>	0.023	<b>X/R Ratio:</b>	7.739
<b>Stator Slots:</b>	48	<b>Rotor Slots:</b>	40

**Speed Torque Current Curve (First Connection, First Speed)**



Marks:



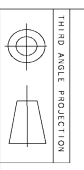
NOTES :

1. DIMENSIONS ARE IN INCHES.
2. F-1 ASM AS SHOWN.
3. F-2 ASM - HAS CONDUIT BOX ON OPPOSITE SIDE.
4. BRACKETED DIMENSIONS ARE METRIC (MILLIMETERS)
5. ICA11, IP54, IMB34 APPLY

GE PROPRIETARY AND CONFIDENTIAL INFORMATION

This document is the property of General Electric Company (GE) and contains information that is confidential and/or proprietary to GE. It is not to be distributed, copied, or used in any manner without the prior written consent of GE. The information contained herein is for internal use only and is not to be used for any other purpose. The information contained herein is not to be used for any other purpose. The information contained herein is not to be used for any other purpose.

REV.	DESCRIPTION	DATE	APPROVED
0			



MODEL	SIGNATURES	DATE
5KS286STE205RG3	SHANKAR	06/28/11
DESIGN	VENKAT J	06/28/11
CHKD	VENKAT J	06/28/11
DATE	VENKAT J	06/28/11
ISSUED	SHANKAR	06/28/11

SCALE: DRAWING SCALE

358B6273AG

SHEET 1 OF 1

**GE Motors** GENERAL ELECTRIC COMPANY

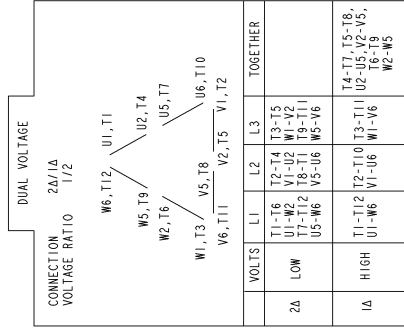
**OUTLINE**

FTD - 286T TEFC CE MARK WITH SGR

2729 CU IN CONDUIT BOX

Marks:

**Connection Diagram**  
**GEM2034E-FIG210**



NAME:501452353 OBJECT:GEM2034E-FIG210 DATE:25-Feb-08 14:03:35