

# Product Information Packet

November 9, 2016

Data shown is for the current revision model #. Ensure your nameplate model # matches.

<b>Model Number:</b>	<b>5KS286STE205A</b>
<b>Catalog Number:</b>	<b>M7733</b>
<b>Instruction Manual:</b>	GEI-M1031
<b>Connection Diagram:</b>	GEM2034E-FIG210
<b>Outline Drawing:</b>	358B6273AC

Accessory Connection Diagrams			
<b>Bearing Thermocouple:</b>	None	<b>Heater:</b>	None
<b>RTD:</b>	None	<b>Thermistor:</b>	None
<b>Thermostat:</b>	None	<b>Winding Thermocouple:</b>	None
<b>Bearing RTD:</b>	None		

Table of Contents	
Specification	01
Performance Characteristics	02
Outline Drawing	03
Connection Drawing(s)	04

**Marks:**

<b>MODEL NUMBER:</b>	<b>5KS286STE205A</b>	<b>Estimated Weight:</b>	450 Lbs
<b>Outline Drawing:</b>	358B6273AC	<b>Time Rating:</b>	CONT
<b>Connection Diagram:</b>	GEM2034E-FIG210	<b>Enclosure:</b>	TEFC
<b>Instruction Book:</b>	GEI-M1031	<b>Encl Construction:</b>	SD
<b>Design Code:</b>	28AD1018A	<b>Ambient Max(°C):</b>	40
<b>Type:</b>	KS	<b>Alt Ambient Max(°C):</b>	--
<b>Frame:</b>	286T	<b>Insulation Class:</b>	F
<b>Phases:</b>	3	<b>NEMA Design:</b>	B
<b>Poles:</b>	4	<b>Nominal Efficiency:</b>	93.6 %
<b>Output Power:</b>	30HP 22.2KW	<b>Guaranteed Efficiency:</b>	92.4
<b>RPM:</b>	1775	<b>3/4 Load Efficiency:</b>	94.5
<b>Voltage:</b>	230/460	<b>KVA Code:</b>	G
<b>Hertz:</b>	60	<b>Max KVAR:</b>	8.4
<b>Amps - FL:</b>	71.8/35.9	<b>Power Factor:</b>	83.5
<b>Service Factor:</b>	1.15	<b>Bearing - DE:</b>	6310ZZ
<b>Alt Service Factor:</b>	--	<b>Bearing - ODE:</b>	6210ZZ

**Enclosure is Totally Enclosed Fan-Cooled**

---

**Stamped Nameplate Notes:**

USABLE AT 200V @ 30 HP, 81.7 AMPS @ 1.0 SF

LRA: 429.2/214.6

50HZ DATA: 25 HP,200/400V,79.2/39.6 AMPS @ 1.15 SF

50HZ DATA: 30 HP,200/400V,82.6/41.3 AMPS @ 1.00 SF

GREASE TYPE: SHELL ALVANIA R3 LITHIUM GREASE

**Additional Information:**

CONDUIT BOX MATERIAL: CAST IRON

SUITABLE FOR USE IN CLASS I DIVISION 2 LOCATIONS

CLASS I DIVISION 2 GROUPS A,B,C,D T3C

CLASS I ZONE 2 IIC T3C



**Performance Characteristics**

1st Winding 1st Connection

**Design: 28AD1018A**

Marks:

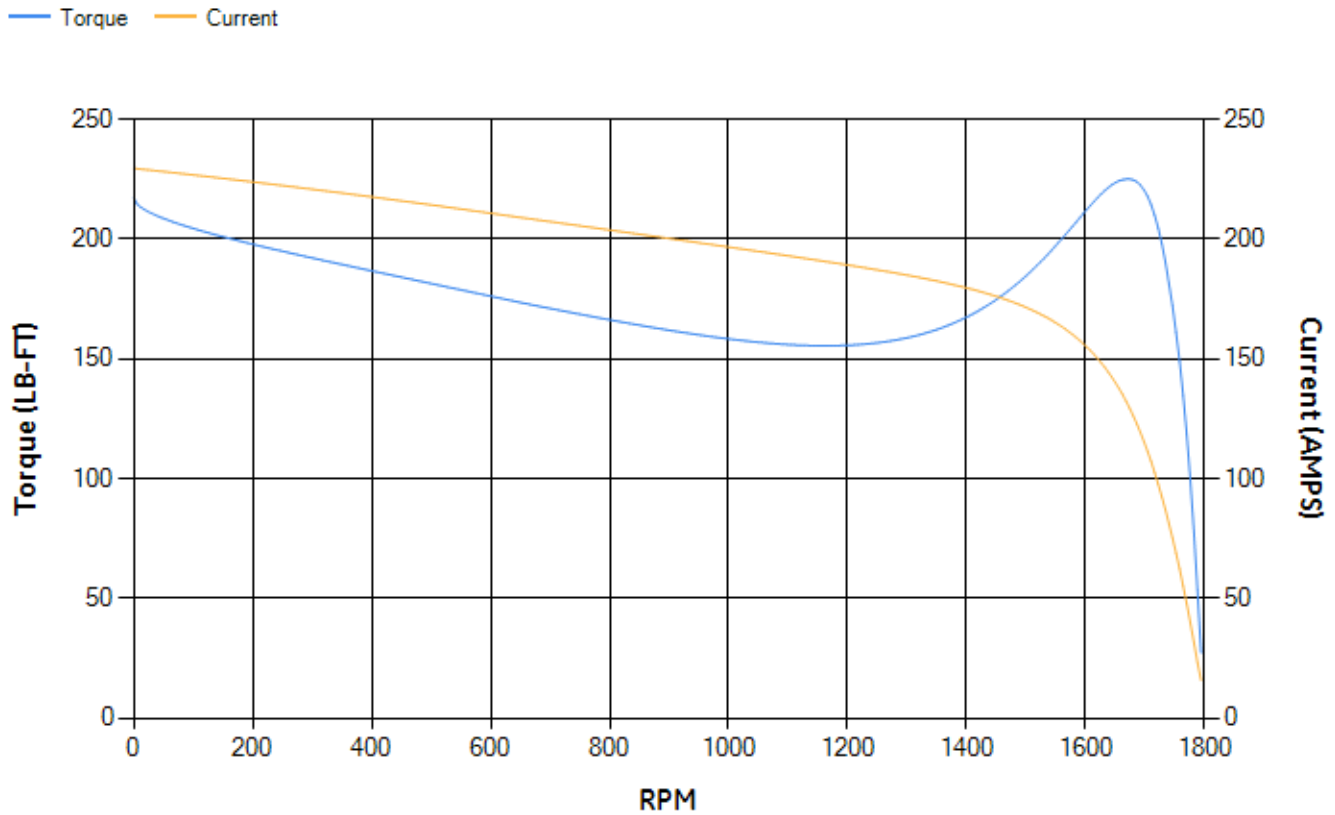
LOAD %	125.0	115.0	100.0	75.0	50.0	25.0	0.0
% EFF	93.25	93.61	94.24	94.46	94.17	91.5	0.00
% PF	84.25	84.23	83.7	80.88	73.17	52.63	4.79
AMPS	44.68	40.95	35.6	27.57	20.38	14.58	11.61

TORQ(FL)#FT	88.82	TORQ(LR)%FL	244.64	TORQ(BD)%FL	252.5
AMPS(LR)	229.54	PF AT START	0.4		

This motor is capable of two cold or one hot start with a maximum connected load inertia of 1023 Lb-Ft Sq (43.07 Kg-meter Sq)at 100% voltage, where the load torque varies with the square of the speed. Acceleration time with maximum inertia and the above load type is 40 seconds. Safe stall time at 100% voltage is 68 seconds cold, 48 seconds hot. Rotor inertia is 4.9 Lb-Ft Sq (0.21 Kg-meter Sq).

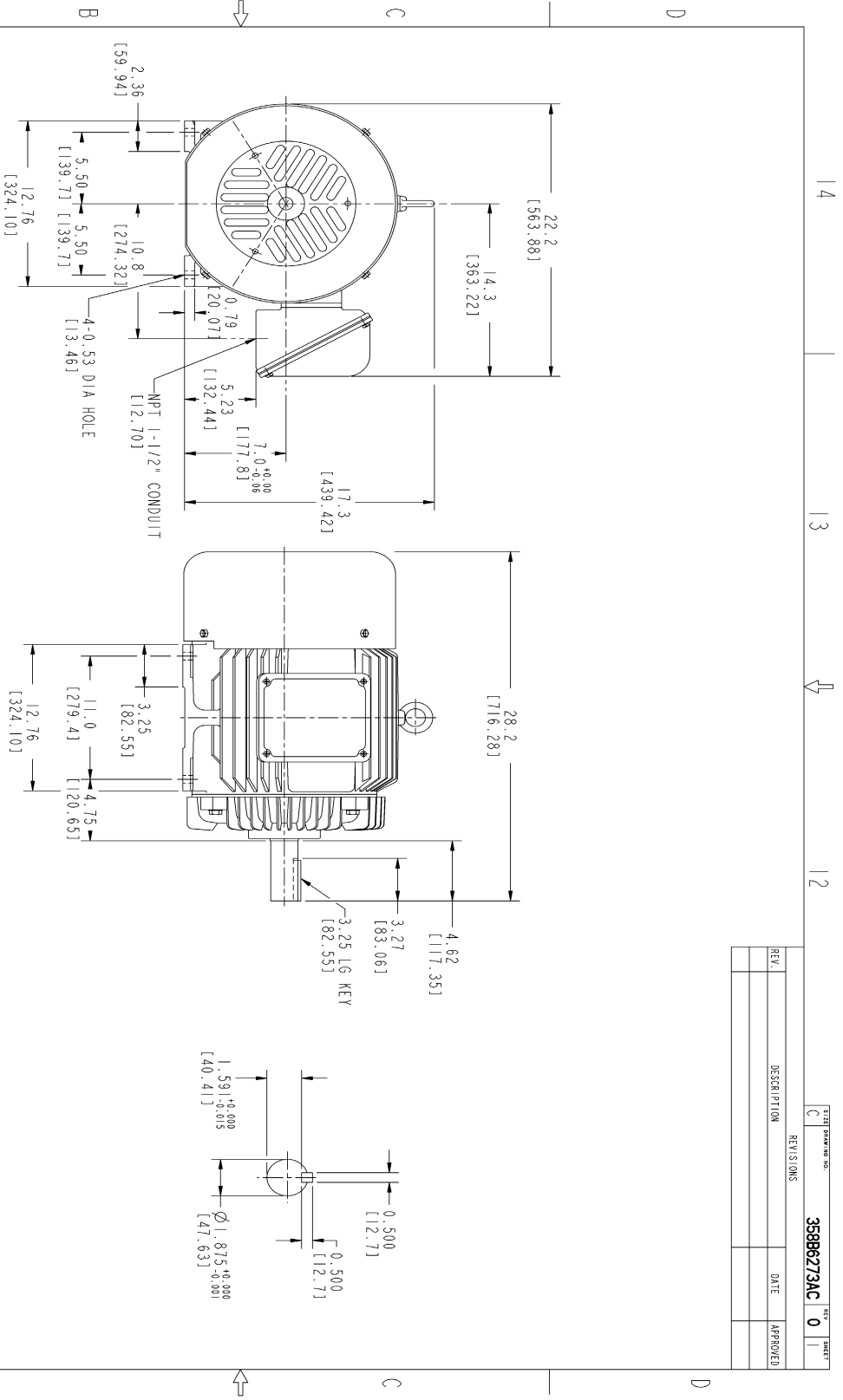
Open Circuit A-C:	0.546	Short Circuit D-C:	0.021
Short Circuit A-C:	0.023	X/R Ratio:	7.739
Stator Slots:	48	Rotor Slots:	40

**Speed Torque Current Curve (First Connection, First Speed)**



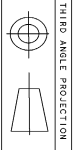
NAME:501291659 OBJECT:358B6273AC DATE:05-Dec-07 09:46:55

Marks:



NOTES :

- 1. DIMENSIONS ARE IN INCHES.
- 2. F-1 ASM AS SHOWN.
- 3. F-2 ASM - HAS CONDUIT BOX ON OPPOSITE SIDE.
- 4. BRACKETED DIMENSIONS ARE METRIC (MILLIMETERS)
- 5. IC411, IP54, IMB34 APPLY



Not for cutting to size  
Mkt. & Inventory Hardware

FOR ADDITIONAL INFO REFER TO:	SIGNATURES	DATE
APPLICABLE SPECIFICATIONS		
DESIGN OR DRAWING SPECIFIED		
DIMENSIONS ARE IN INCHES		
TOLERANCES UNLESS OTHERWISE SPECIFIED		
1 FRACTIONS ±		
2 PL DECIMALS ±		
3 FRACTIONS ±		
4 ANGLES ±		
5 FINISH		

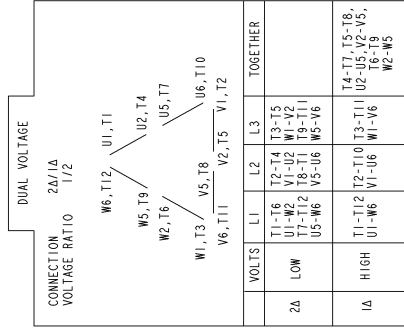
GENERAL ELECTRIC COMPANY
<b>OUTLINE</b> FTD - 286T TERC CE MARK 2729 CU IN CONDUIT BOX
358B6273AC REV 0
GE Consumer & Industrial TITLE DATE SHEET 1 OF 1

REV.	DESCRIPTION	DATE	APPROVED

358B6273AC REV 0

Marks:

**Connection Diagram**  
**GEM2034E-FIG210**



NAME:501452353 OBJECT:GEM2034E-FIG210 DATE:25-Feb-08 14:03:35

