

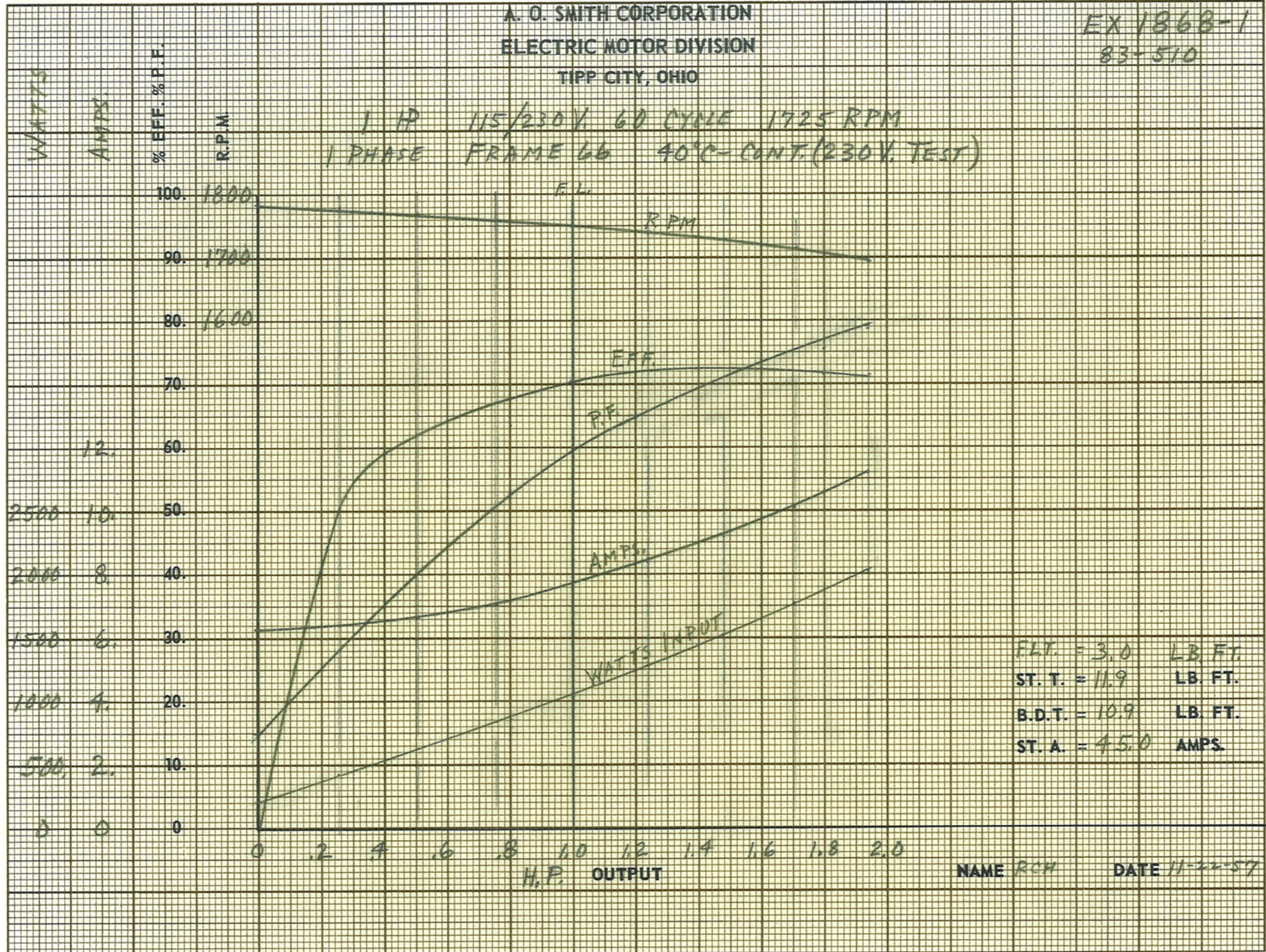
Uncontrolled Copy

C 703

EX 1868-1
83-510

A. O. SMITH CORPORATION
ELECTRIC MOTOR DIVISION
TIPP CITY, OHIO

1 HP 115/230V 60 CYCLE 1725 RPM
1 PHASE FRAME 66 40°C-CONT. (230V. TEST)



FLT. = 3.0 LB. FT.
ST. T. = 11.9 LB. FT.
B.D.T. = 10.9 LB. FT.
ST. A. = 45.0 AMPS

NAME RCH DATE 11-22-57