

4

3

2

1

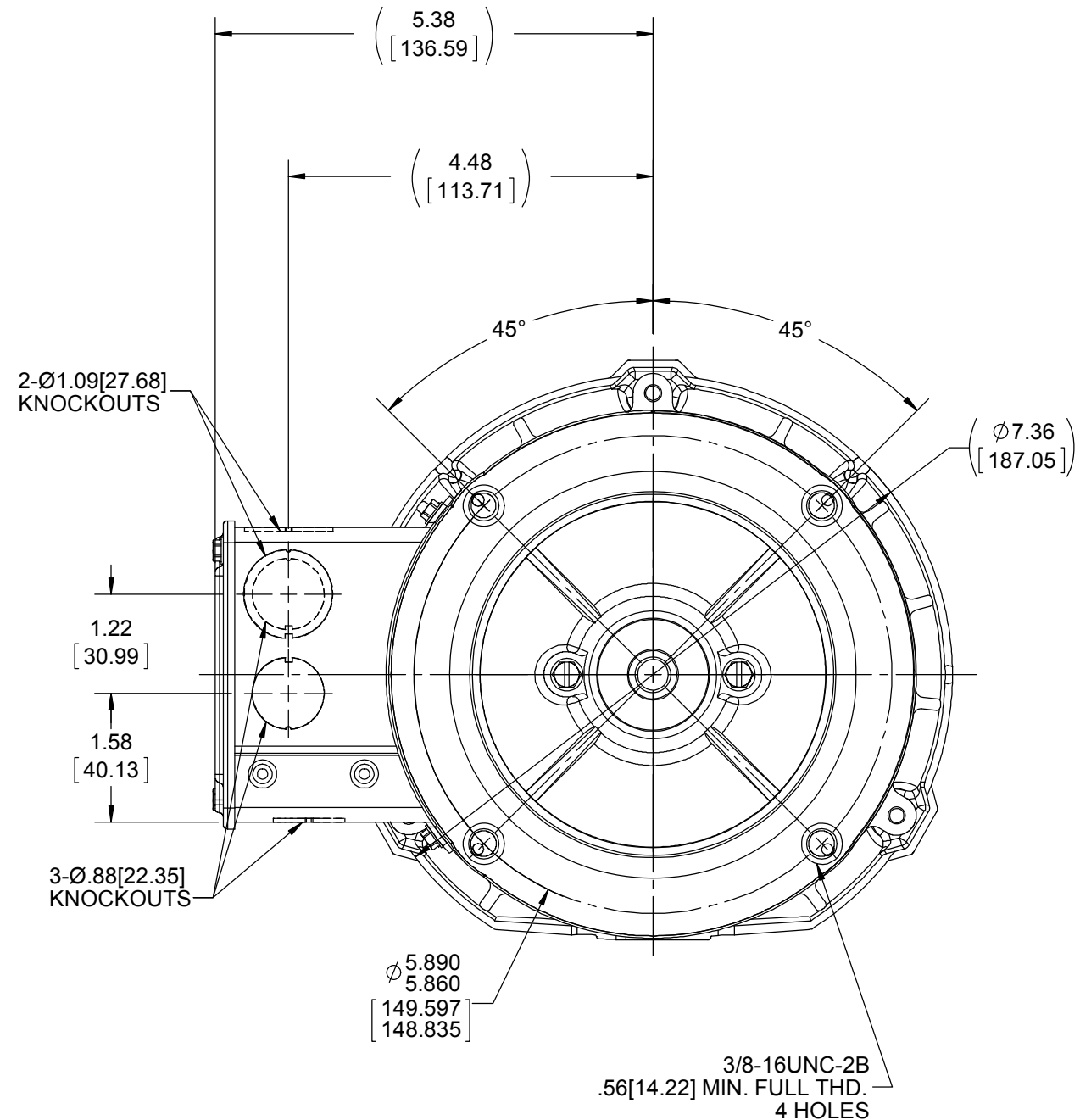
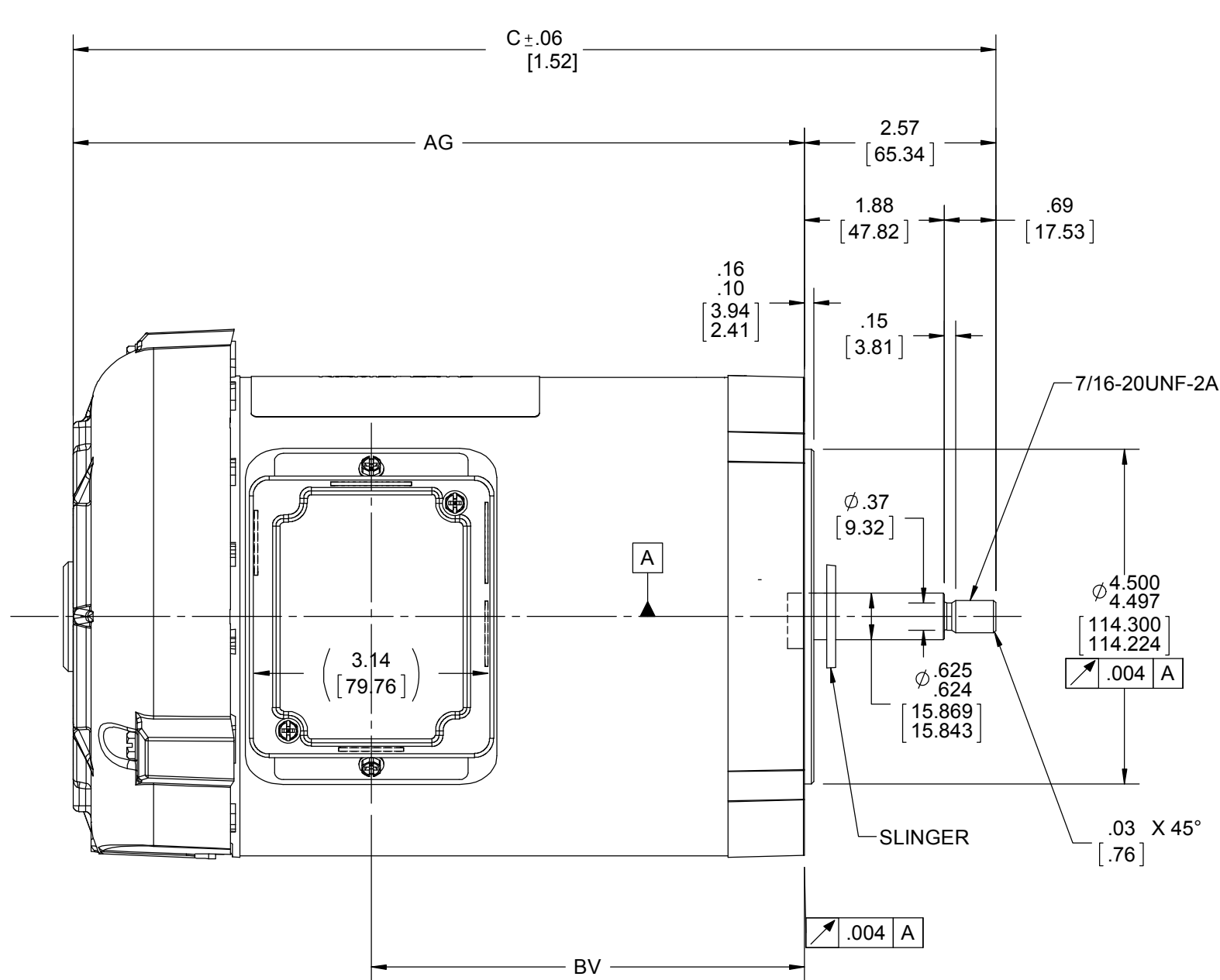
B

B

A

A


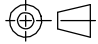
TERM. END



- NOTE:  
1) CONDUIT BOX CAN BE ROTATED 180°.  
2) NAMEPLATE READ FROM CONDUIT BOX SIDE

DRAWING REVISION	REVISION BY	REV DATE/© DATE
A		
ECO	APPROVED BY	DATE
ECO-0164142		
ECO DESCRIPTION		
OUTLINE CONVERSION PROJECT		
COPYRIGHT (PER REVISION DATE) REGAL BELOIT AMERICA, INC. ALL RIGHTS RESERVED. PROPRIETARY AND CONFIDENTIAL INFORMATION - THIS DOCUMENT IS THE PROPERTY OF REGAL BELOIT AMERICA, INC. ("OWNER") AND CONTAINS OWNER'S PROPRIETARY INFORMATION. ANY PERSON, CORPORATION OR OTHER FIRM RECEIVING IT IS DEEMED, BY RECEIVING IT, TO AGREE THAT IT, AND/OR ANY PART OF IT, SHALL NOT BE DISCLOSED TO ANY PERSON, CORPORATION OR OTHER ENTITY, DUPLICATED, AND/OR USED, EXCEPT AS EXPRESSLY APPROVED IN WRITING IN ADVANCE BY OWNER. THIS DOCUMENT SHALL BE RETURNED TO OWNER UPON REQUEST. IT MAY BE SUBJECT TO CERTAIN RESTRICTIONS UNDER APPLICABLE EXPORT CONTROL LAWS AND REGULATIONS.		

TOLERANCES (EXCEPT AS NOTED):			
DEC.	INCH	mm	ANGLE
.X	$\pm 0.1$	[ $\pm 3$ ]	$\pm 7' 30''$
.XX	$\pm 0.03$	[ $\pm 0.8$ ]	
.XXX	$\pm 0.005$	[ $\pm 0.13$ ]	
.XXXX	$\pm 0.0005$	[ $\pm 0.013$ ]	
REMOVE BURRS & BREAK SHARP EDGES: .003/.015 [.08/.38] X 45°			
CORNER FILLETS: R.02 [.5]			
MACHINED SURFACES: 200 $\sqrt{\text{mm}}$ 5.1 $\sqrt{\text{mm}}$			
mm DIMENSIONS IN [BRACKETS] ARE FOR REFERENCE ONLY			

DRAWN BY H. ADIKE	 Regal Beloit America, Inc.		
DATE 04/24/2018			
APPROVED BY D SURYAWANSHI	DESCRIPTION OUTLINE		
DATE 03-22-2019	56 FR - BB - TEFC - C-FACE - 3Ø		
REFERENCE 100352	MATERIAL	PROCESS/FINISH	
THIRD ANGLE PROJECTION 	SIZE B	DRAWING NUMBER 108720	SHEET 1 OF 1

DASH NO.	"C"	"AG"	"BV"
656	12.39 [314.45]	9.82 [249.42]	5.82 [147.82]

4

3

2

1