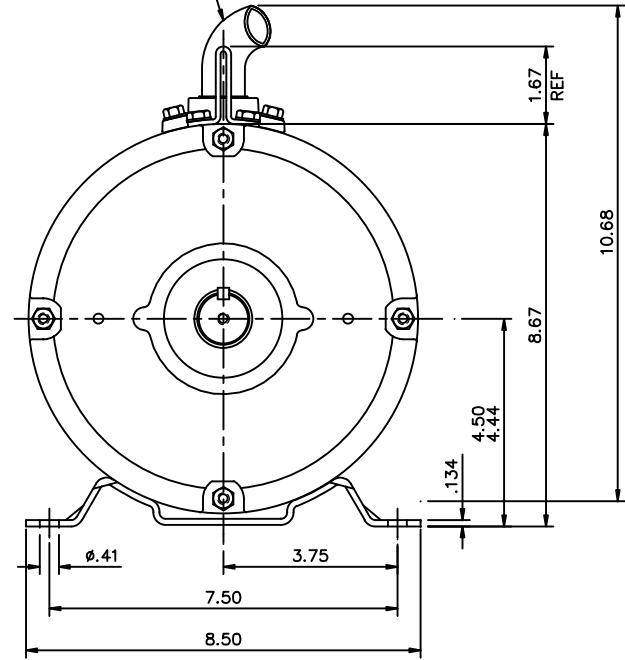
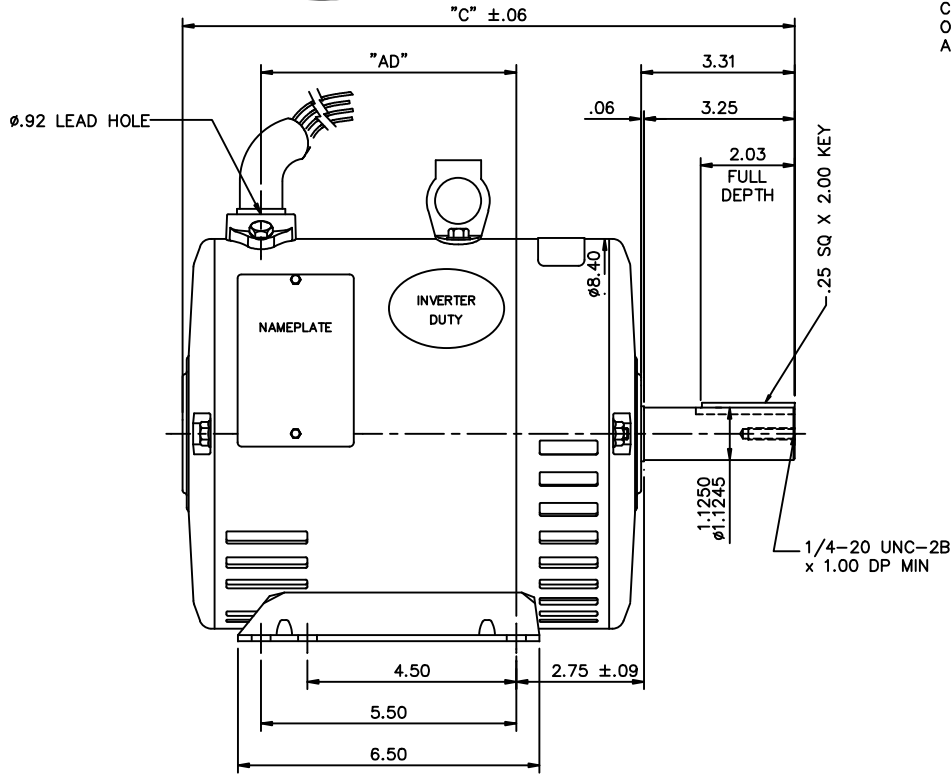


CONNECTOR TO BE LOCATED 30° OFF SHAFT AXIS TOWARD SHAFT END AS SHOWN



DASH NO.	"C"	"AD"
800	12.69	5.00
850	13.19	5.50
900	13.69	6.00
950	14.19	6.50
1000	14.69	7.00
1050	15.19	7.50
1100	15.69	8.00
1150	16.19	8.50

		TOLERANCES UNLESS SPECIFIED		MARATHON ELECTRIC		DRAWN VV 21/01/08	
		DEC.	INCHES			CHK	
		.X	±.1	TITLE		APPD	
		.XX	±.03	OUTLINE - 180T FRAME DRIP PROOF - RIGID		SCALE 3=8	
		.XXX	±.005			REF OL132123	
		.XXXX	±.0005			FMF 184TTDW7612	
NO.	REVISION	BY & DATE	CHK	ANG	FINISH	PREV	
			RFP		CAD FILE	035639	SIZE B
THIS DRAWING IN DESIGN AND DETAIL IS OUR PROPERTY AND MUST NOT BE USED EXCEPT IN CONNECTION WITH OUR WORK ALL RIGHTS OF DESIGN AND INVENTION ARE RESERVED THIS IS AN ELECTRONICALLY GENERATED DOCUMENT - DO NOT SCALE THIS PRINT						DRAWING NO.	REV.
						035639	