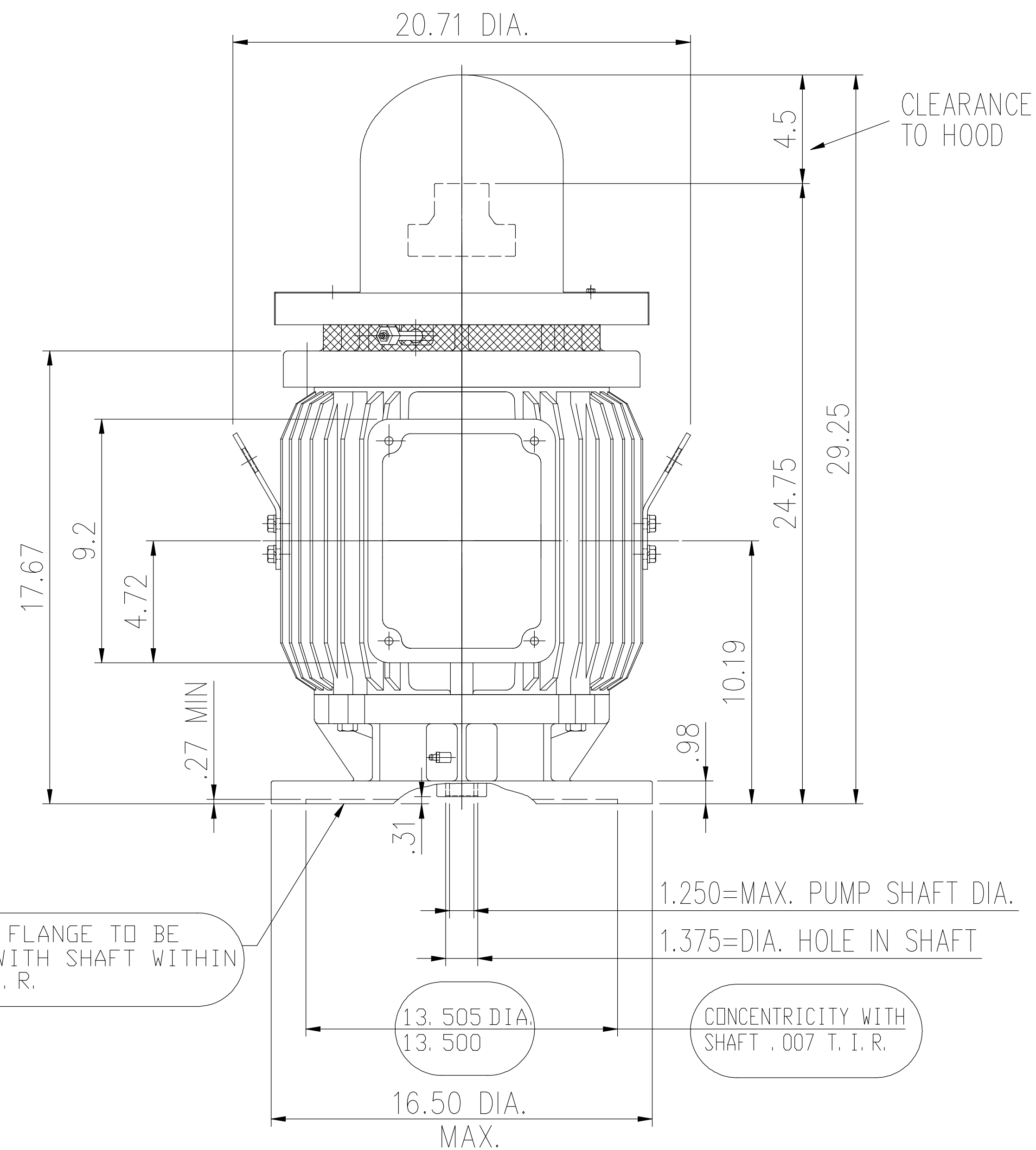
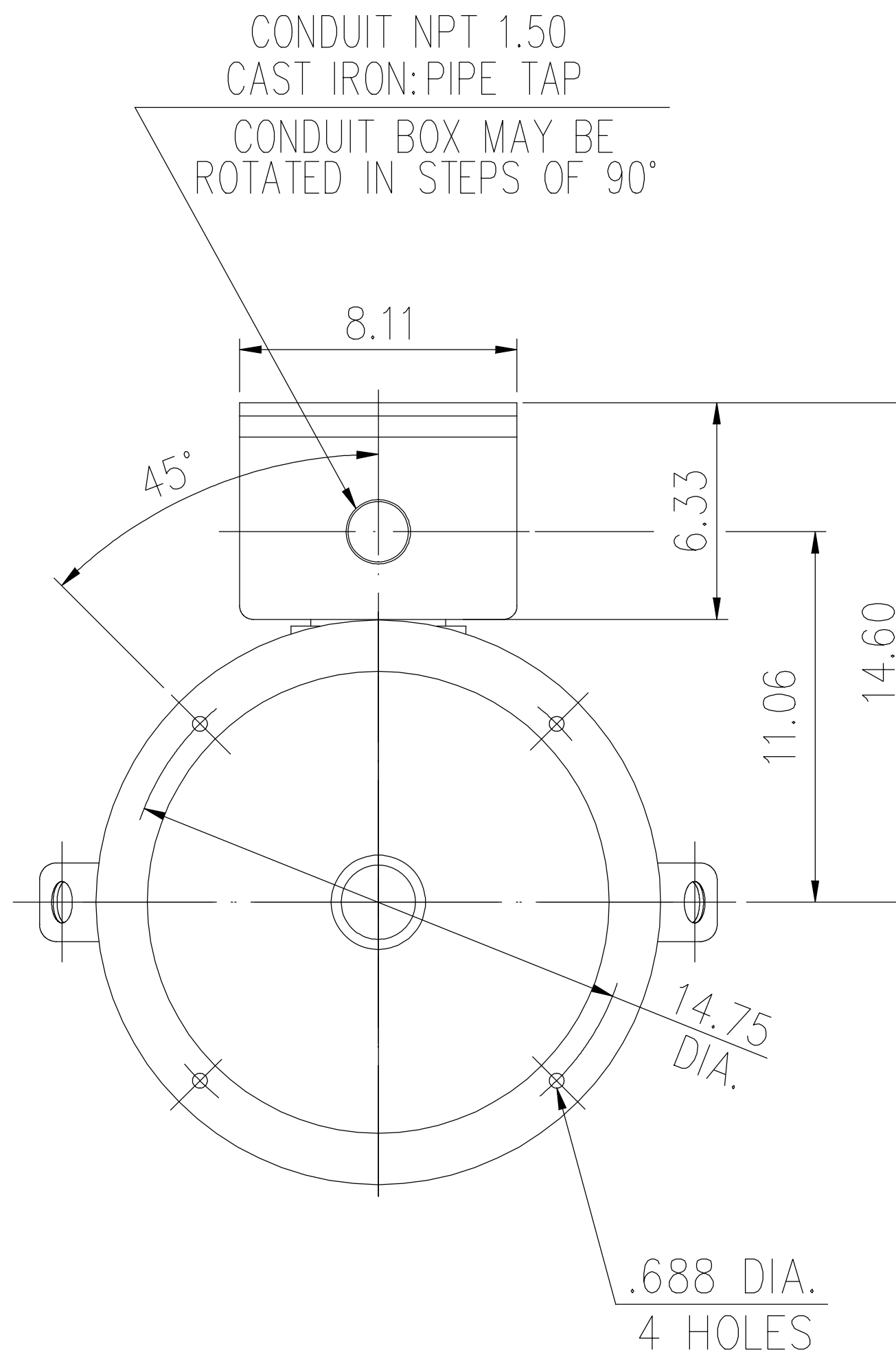


COUPLING	BX DIA.	KEYWAY		BY	BZ	XF	XC
		WIDE	DEEP				
	1.001	0.250	0.140	10-32UNF	1.375	1.850	0.430
	1.188	0.250	0.140	1/4-20UNC	1.750	1.850	0.430
	1.251	0.250	0.140	1/4-20UNC	1.750	1.850	0.430
	0.751	N/A	N/A	N/A	N/A	N/A	N/A

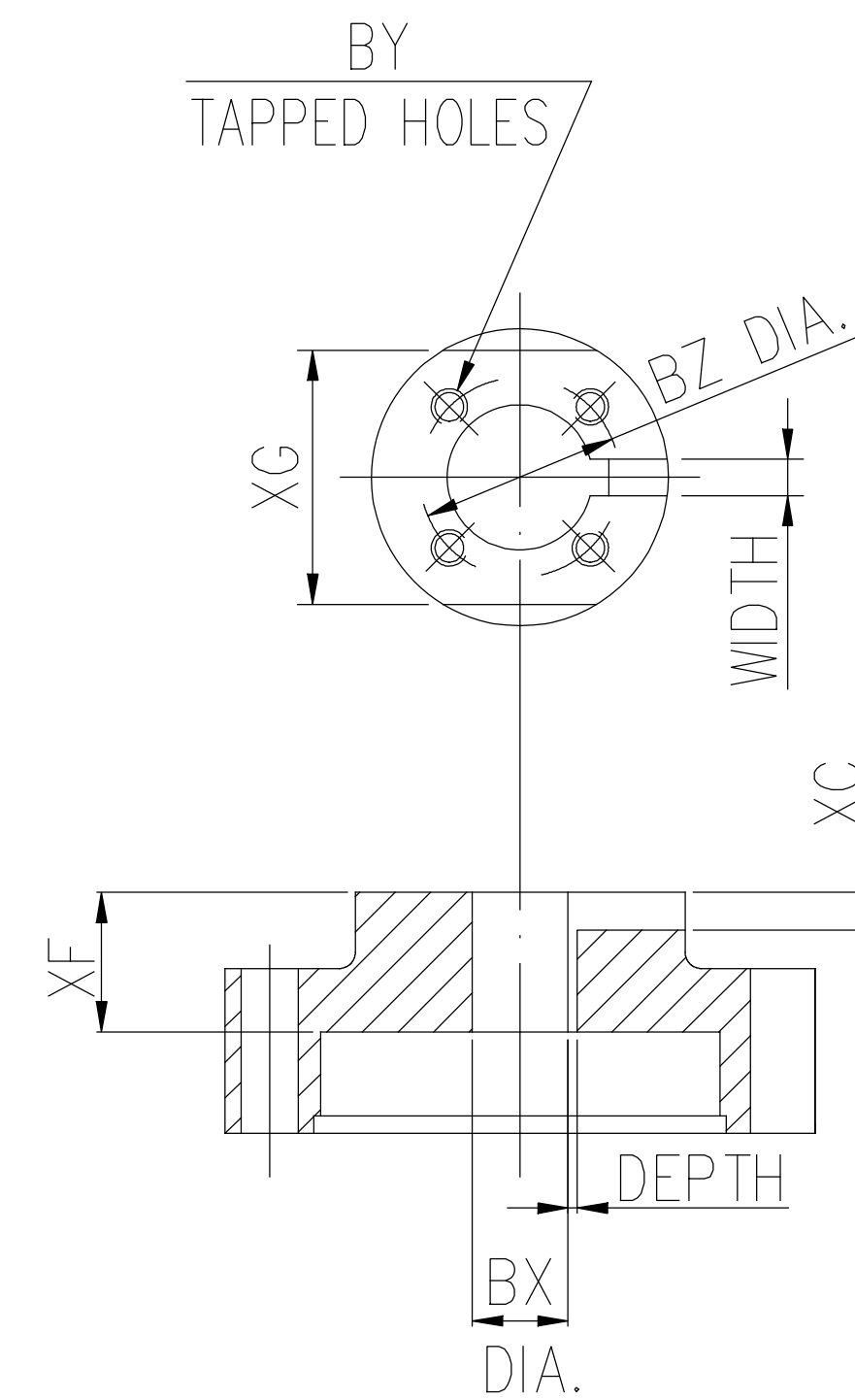


FACE OF FLANGE TO BE SQUARE WITH SHAFT WITHIN .007 T. I. R.

CONCENTRICITY WITH SHAFT .007 T. I. R.



BOTTOM VIEW OF MOTOR



COUPLING

- (1) DIMENSIONS ARE IN INCHES.
- (2) DRIVE END BEARING 6311
OPPOSITE DRIVE END BEARING 7311B
- (3) APPROXIMATE WEIGHT = 490 lbs

- (4) END OF LINE TESTS - SPECIFIC TO EACH RATING
 - *NO LOAD AMPS @ FULL VOLTAGE
 - *NO LOAD WATTS @ FULL VOLTAGE
 - *VIBRATION MEETS MG-1 STANDARD
 - BALANCE 0.15 IN/S 3.8 MM/S

		TOLERANCES UNLESS SPECIFIED		REGAL REGAL-BELOIT CORPORATION		DRAWN	
		DEC.	INCHES			CHK	
		.X	±.1			APPD	
		.XX	±.03	TITLE		SCALE	
B	UPDATED PER MARK-UPS ECO-0151417	WGJ	9-10-2018	AL	.XXX	±.005	REF
A	RELEASED FOR PRODUCTION ECO-0125213	WGJ	6-13-2017	AL	.XXXX	±.0005	FMF
NO.	REVISION	BY & DATE	CHK	ANG	±7'30"	FINISH	
THIS DRAWING IN DESIGN AND DETAIL IS OUR PROPERTY AND MUST NOT BE USED EXCEPT IN CONNECTION WITH OUR WORK ALL RIGHTS OF DESIGN AND INVENTION ARE RESERVED THIS IS AN ELECTRONICALLY GENERATED DOCUMENT - DO NOT SCALE THIS PRINT				RFP	CAD FILE		SIZE
				DIST			DRAWING NO.
						B	SS620837
						REV. B	