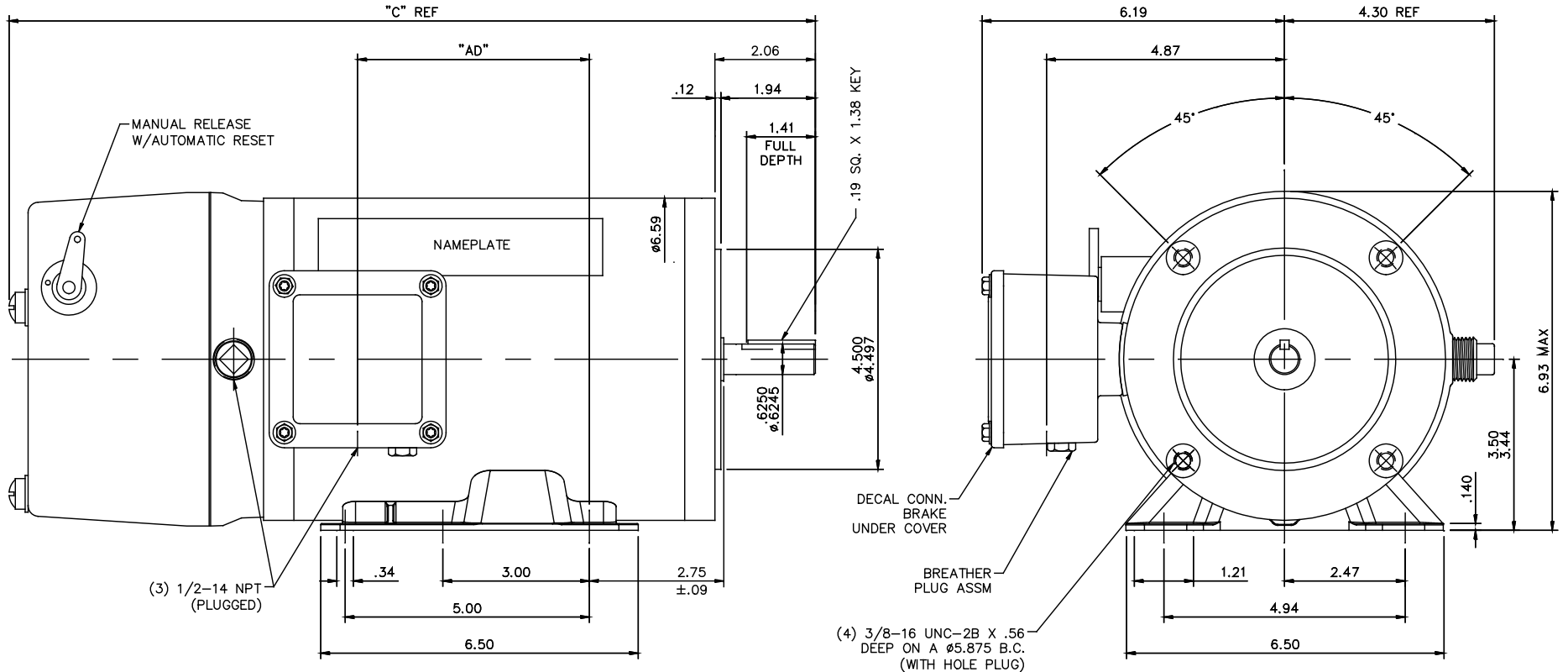


607-0286



DASH NO.	"C"	"AD"
800	16.51	4.74
850	17.01	5.24
900	17.51	5.74
950	18.01	6.24

MAXIMUM FACE RUNOUT TO BE .004 T.I.R.  
 MAXIMUM PILOT ECCENTRICITY .004 T.I.R.  
 PERMISSIBLE SHAFT RUNOUT .002 T.I.R.

**ALL-STAINLESS**  
 VITON CONDUIT BOX & COVER GASKETS  
 VITON O-RINGS IN ENDBELL RABBETS, UNDER THRU BOLT HEADS & BRAKE LEAD HOLE  
 VITON SHAFT SEAL  
 BREATHER PLUG IN CONDUIT BOX  
 ALL STAINLESS STEEL CONSTRUCTION

ORACLE REV	0
------------	---

TOLERANCES UNLESS SPECIFIED		REGAL™ Regal Beloit America, Inc.		DRAWN
DEC.	INCHES	CHK	APPD	JD 12/22/2016
.X	±.1			
.XX	±.03			
.XXX	±.005			
.XXXX	±.0005			
NO.	REVISION	BY & DATE	CHK	ANG
			RFP	±1/2"
			DIST	
NEW DRAWING		MATERIAL FINISH		PREV
		MAT'L STAINLESS STEEL DUCK - BRAKE MOTOR		
		CAD FILE 607-0286		SIZE B
				DRAWING NO. 607-0286
				REV. A

THIS DRAWING IN DESIGN AND DETAIL IS OUR PROPERTY AND MUST NOT BE USED EXCEPT IN CONNECTION WITH OUR WORK. ALL RIGHTS OF DESIGN AND INVENTION ARE RESERVED. THIS IS AN ELECTRONICALLY GENERATED DOCUMENT - DO NOT SCALE THIS PRINT