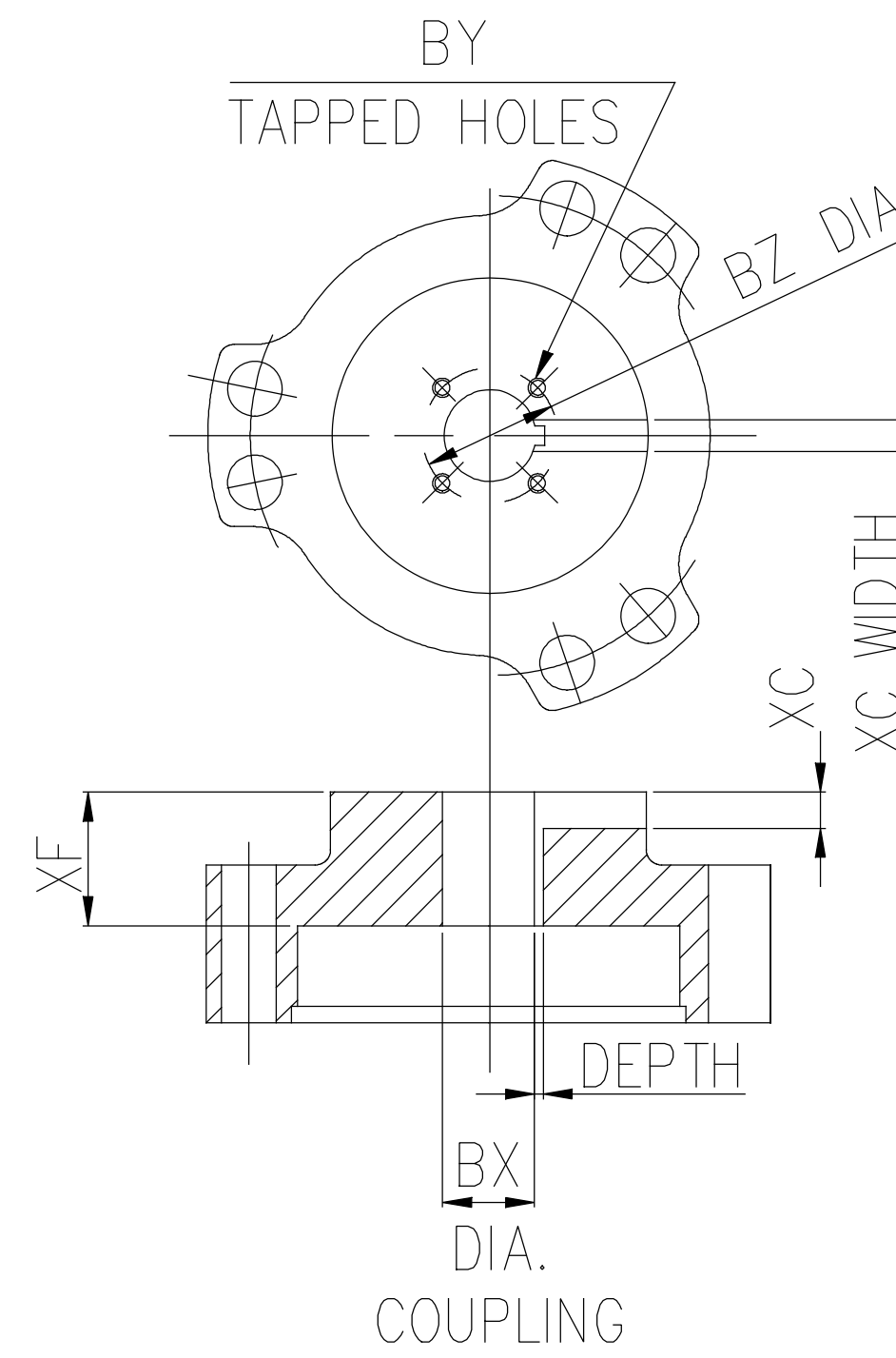
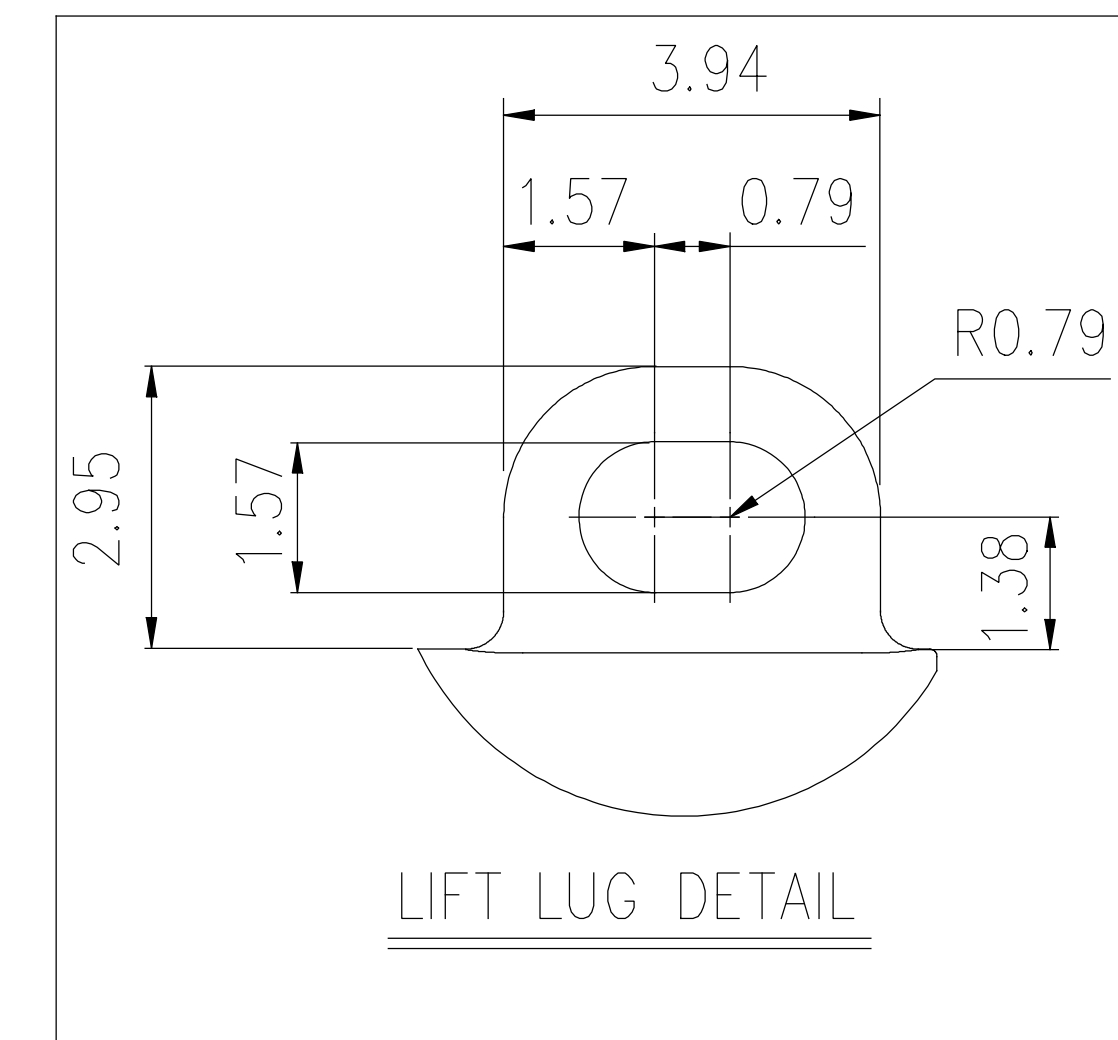
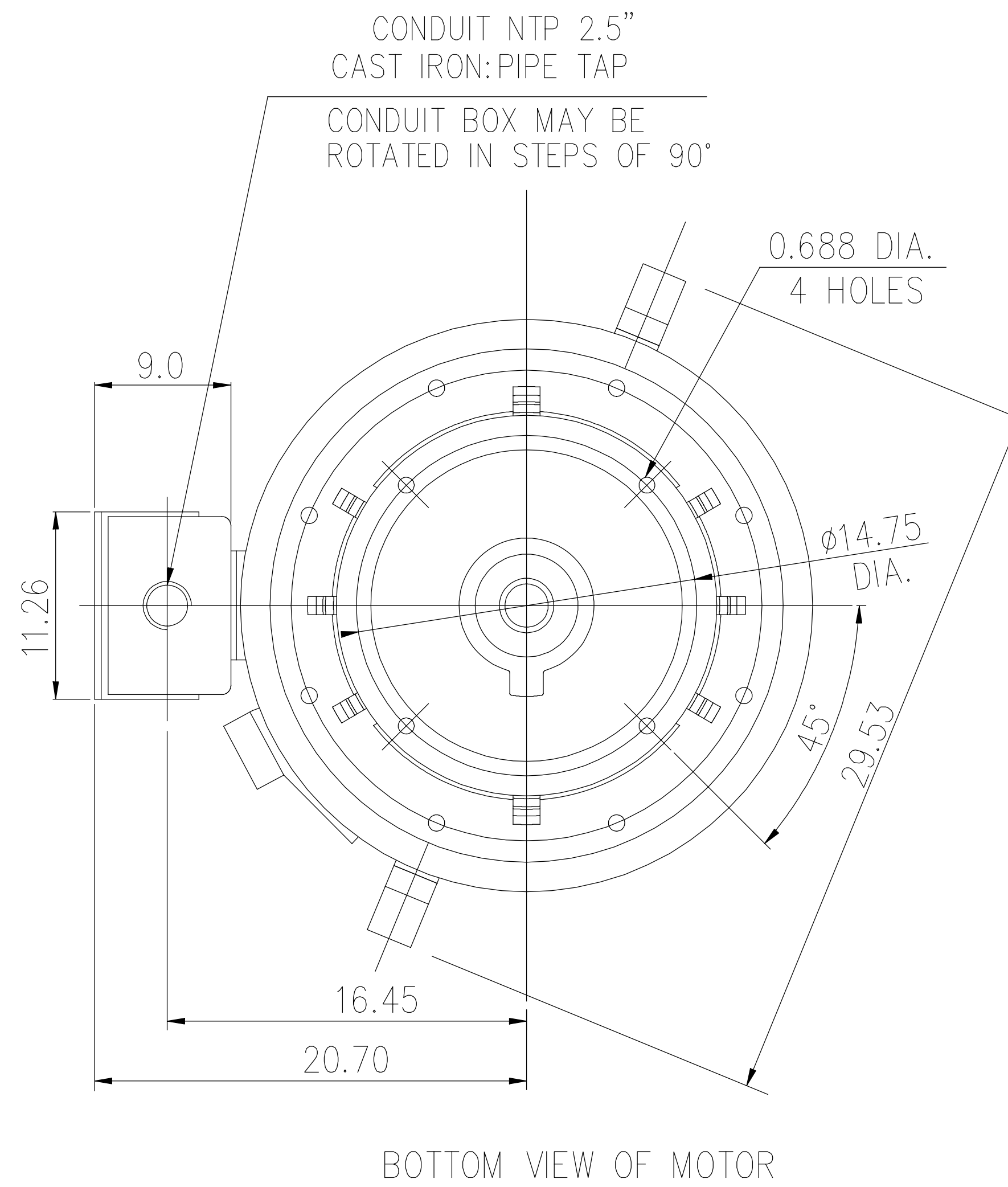
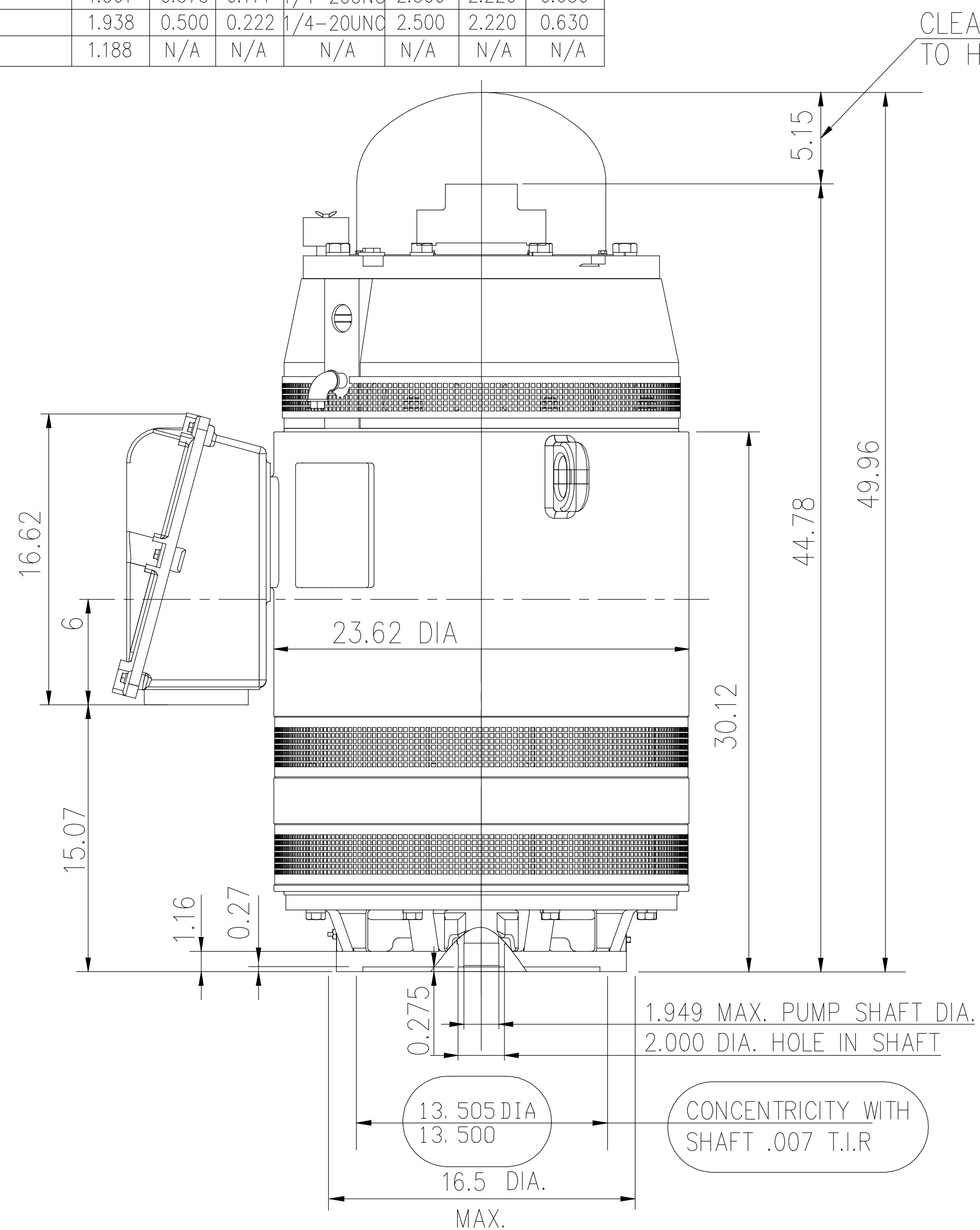


SS620843

COUPLING	BX DIA.	KEYWAY		BY	BZ	XF	XC
		WIDE	DEEP				
	1.188	0.250	0.116	1/4-20UNC	1.750	2.220	0.630
	1.251	0.375	0.168	1/4-20UNC	2.120	2.220	0.630
	1.438	0.375	0.171	1/4-20UNC	2.500	2.220	0.630
	1.501	0.375	0.171	1/4-20UNC	2.500	2.220	0.630
	1.938	0.500	0.222	1/4-20UNC	2.500	2.220	0.630
	1.188	N/A	N/A	N/A	N/A	N/A	N/A



- (1) DIMENSIONS ARE IN INCHES.
- (2) DRIVE END BEARING 6314  
OPPOSITE DRIVE END BEARING 7222DT
- (3) APPROXIMATE WEIGHT = 2050 LB

(4) END OF LINE TESTS - SPECIFIC TO EACH RATING  
 \*NO LOAD AMPS @ FULL VOLTAGE  
 \*NO LOAD WATTS @ FULL VOLTAGE  
 \*VIBRATION MEETS MG-1 STANDARD  
 BALANCE 0.15 IN/S 3.8 MM/S

NO.	REVISION	BY & DATE	CHK	ANG	TOLERANCES UNLESS SPECIFIED		TITLE	DRAWN		
					DEC.	INCHES				
C	UPDATED PER MARK-UPS ECO-0151417	WGJ 9-11-2018	AL	.XX	±.03		REGAL - BELOIT CORPORATION OUTLINE 444/445TP16 FRAME	CHK		
B	RE-PUBLISHED ECO-0125813	WGJ 6-21-2017	EMH	.XXX	±.005			APPD		
A	RELEASED FOR PRODUCTION ECO-0125213	WGJ 6-13-2017	AL	.XXXX	±.0005			SCALE		
							MAT'L.	REF		
							FINISH	FMF		
							CAD FILE	PREV		
THIS DRAWING IN DESIGN AND DETAIL IS OUR PROPERTY AND MUST NOT BE USED EXCEPT IN CONNECTION WITH OUR WORK ALL RIGHTS OF DESIGN AND INVENTION ARE RESERVED THIS IS AN ELECTRONICALLY GENERATED DOCUMENT - DO NOT SCALE THIS PRINT							RFP	SIZE	DRAWING NO.	REV.
							DIST	B	SS620843	C