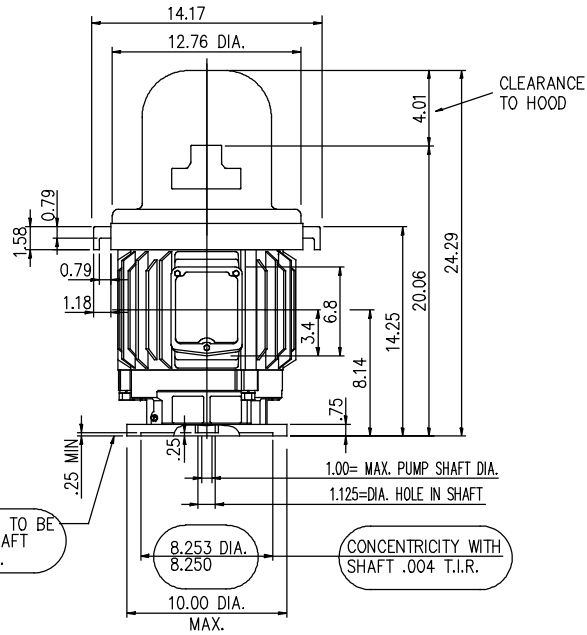


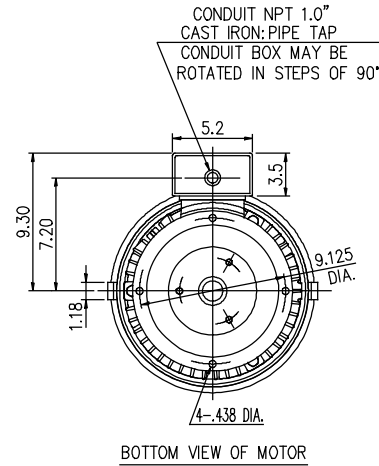
COUPLING	BX DIA.	KEYWAY		BY	BZ	XF	XC
		WIDE	DEEP				
	1.001	0.250	0.140	10-32UNF	1.375	1.650	0.430
	0.751	N/A	N/A	N/A	N/A	N/A	N/A

SS620833



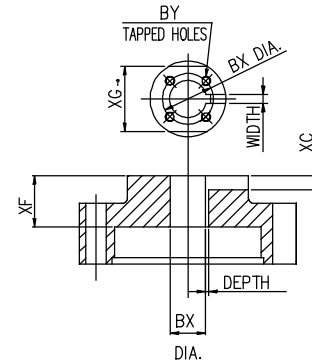
FACE OF FLANGE TO BE SQUARE WITH SHAFT WITHIN .004 T.I.R.

CONCENTRICITY WITH SHAFT .004 T.I.R.



BOTTOM VIEW OF MOTOR

CONDUIT NPT 1.0" CAST IRON PIPE TAP
CONDUIT BOX MAY BE ROTATED IN STEPS OF 90°



COUPLING

- (1) DIMENSIONS ARE IN INCHES
- (2) APPROXIMATE WEIGHT = 200 LBS
- (3) DRIVE END BEARING 6209
OPPOSITE DRIVE END BEARING 7309B

(4) END OF LINE TESTS - SPECIFIC TO EACH RATING
 *NO LOAD AMPS @ FULL VOLTAGE
 *NO LOAD WATTS @ FULL VOLTAGE
 *VIBRATION MEETS MG-1 STANDARD
 BALANCE 0.15 IN/S 3.8 MM/S

				TOLERANCES UNLESS SPECIFIED		REGAL REGAL-BELOIT CORPORATION		DRAWN		
				DEC.	INCHES			CHK		
				X	±.1			APPD		
C	UPDATED PER MARK-UPS	ECD-0151417	VGJ 9-7-2018	AL	XX	±.03	TITLE	OUTLINE		
B	RE-PUBLISHED	ECD-0125813	VGJ 9-21-2017	EMH	XXX	±.005	213/215TP10 FRAME			
A	RELEASED	ECD-0125213	VGJ 6-13-2017	AL	XXXX	±.0005	MAT'L.	SCALE		
NO.	REVISION		BY & DATE	CHK	ANG	±7'30"	FINISH	REF		
THIS DRAWING IN DESIGN AND DETAIL IS OUR PROPERTY AND MUST NOT BE USED EXCEPT IN CONNECTION WITH OUR WORK. ALL RIGHTS OF DESIGN AND INVENTION ARE RESERVED. THIS IS AN ELECTRONICALLY GENERATED DOCUMENT - DO NOT SCALE THIS PRINT.				RFP			CAD FILE	SIZE	DRAWING NO.	REV.
				DIST			B	SS620833	C	