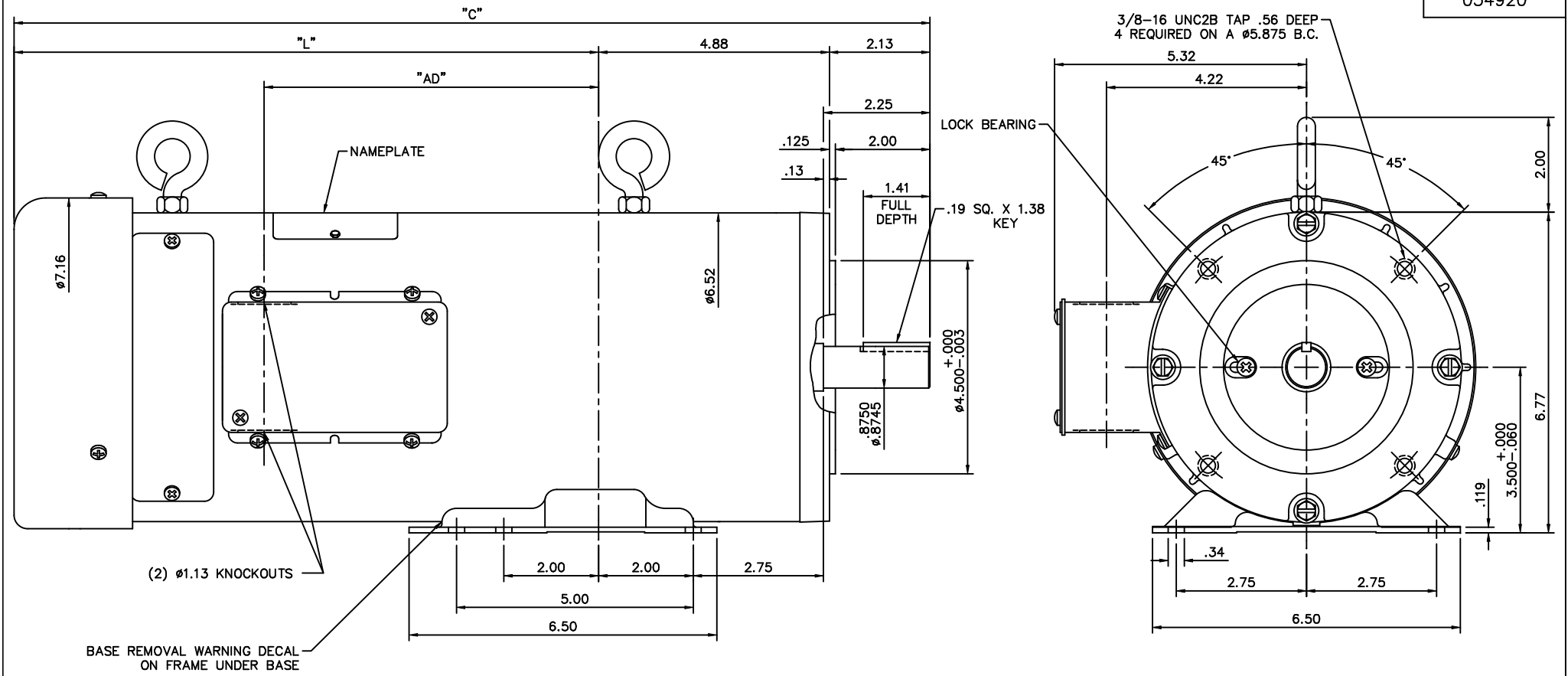


034920



BASE REMOVAL WARNING DECAL ON FRAME UNDER BASE

- NOTES:
1. MAXIMUM FACE RUNOUT TO BE .004 T.I.R.
  2. MAXIMUM PILOT ECCENTRICITY .004 T.I.R
  3. PERMISSIBLE SHAFT RUNOUT .002 T.I.R.
  4. GASKETS THROUGHOUT.

J140	18.84	11.84	6.56	T140	22.34	15.34	10.06
H140	18.34	11.34	6.06	R140	21.84	14.84	9.56
G140	17.84	10.84	5.56	P140	21.34	14.34	9.06
F140	17.34	10.34	5.06	N140	20.84	13.84	8.56
E140	16.84	9.84	4.56	M140	20.34	13.34	8.06
D140	16.34	9.34	4.06	L140	19.84	12.84	7.56
C140	15.84	8.84	3.56	K140	19.34	12.34	7.06
FRAME	"C"	"L"	"AD"	FRAME	"C"	"L"	"AD"

				TOLERANCES UNLESS SPECIFIED			DRAWN RPB 2/25/02
				DEC.	INCHES		CHK
				.X	±.1	APPD B.C. 2/25/02	SCALE 1=2
				.XX	±.03	TITLE	OUTLINE - 56 FRAME D.C. MOTOR
				.XXX	±.005		140TC FACE AND BASE - TEFC
01	MOVED Ø1.13 KNOCKOUT NOTE TO SIDE VIEW/ECR85901.	RPB 7/2/04	BC	.XXXX	±.0005	MAT'L	FMF 128019.00
NO.	REVISION	BY & DATE	CHK	ANG	±1/2"	FINISH	PREV
THIS DRAWING IN DESIGN AND DETAIL IS OUR PROPERTY AND MUST NOT BE USED EXCEPT IN CONNECTION WITH OUR WORK ALL RIGHTS OF DESIGN AND INVENTION ARE RESERVED THIS IS AN ELECTRONICALLY GENERATED DOCUMENT - DO NOT SCALE THIS PRINT				RFP	CAD FILE	034920	SIZE B DRAWING NO. 034920
				DIST			REV. 01

ERROR: syntaxerror  
OFFENDING COMMAND: --nostringval--

STACK:

/im  
-savelevel-