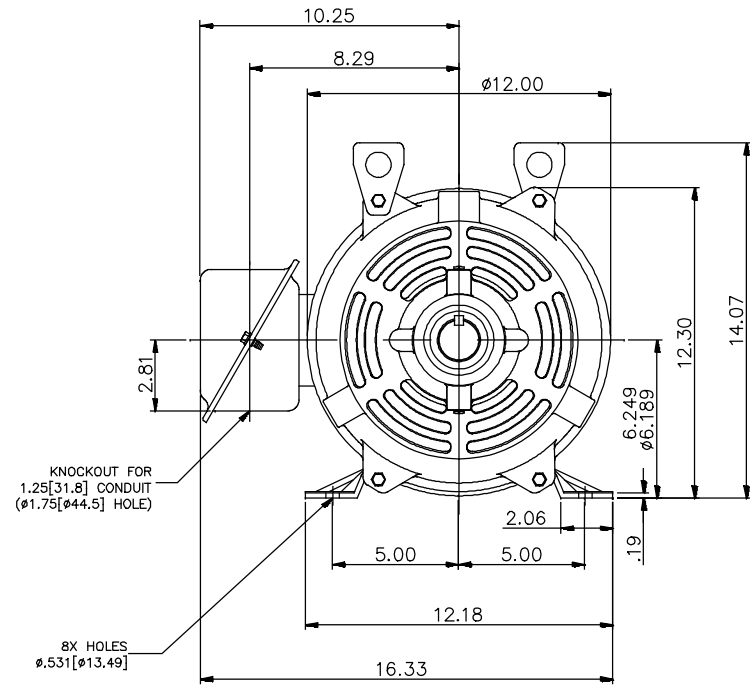
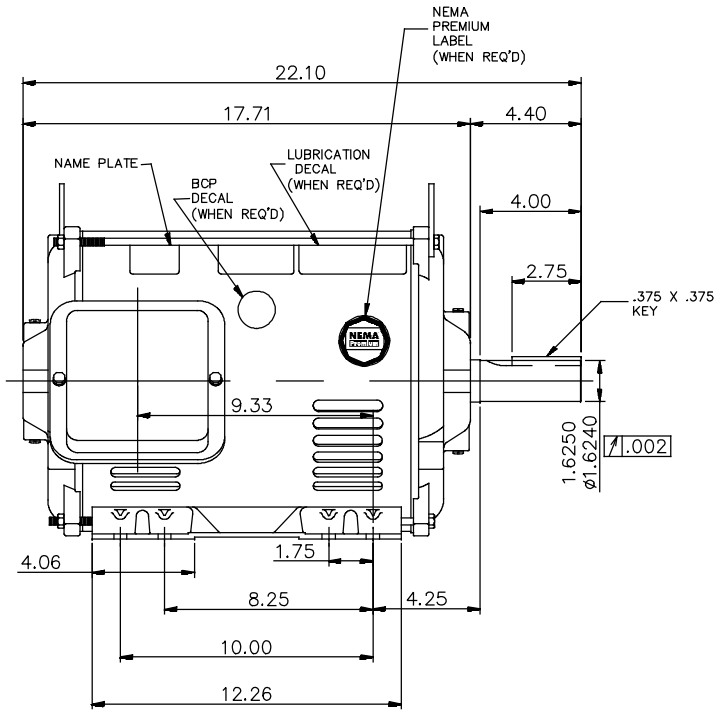


037977




NOTES:

1. CONDUIT BOX MAY BE ROTATED IN 90° INCREMENTS.
2. MOTOR IS SUITABLE FOR FIELD CONVERSION FROM AN F1 TO AN F2 CONDUIT BOX LOCATION.
3. MOTOR VENTILATION: AIR INTAKE THROUGH OPENINGS IN THE FACE OF EACH BRACKET AND EXHAUSTED THROUGH THE VENT SLOTS ON EACH END OF THE SHELL.

MOTOR DESCRIPTION:

3 PHASE OPEN DRIPPROOF STEEL SHELL 254T OR 256T MOUNTING. OTHER MOUNTING ORIENTATIONS ARE ACCEPTABLE; HOWEVER WHEN MOUNTED OTHER THAN HORIZONTAL; MOTOR WILL NOT BE DRIPPROOF AS DEFINED BY NEMA.

NO.	REVISION	BY & DATE	CHK	ANG	TOLERANCES UNLESS SPECIFIED		DRAWN	PVR		
					DEC.	INCHES				
004	DECAL UPDATED AS PER ECR-0162503	GNK 09/14/2018	GNK	.X	±.1	 Regal Beloit America, Inc.	APPD	01/28/15		
003	ADDED NAME PLATE	MVG 12/12/17	SR	.XX	±.03		CHK	ST	01/28/15	
002	CHANGED FROM 20 HP TO 15 HP	AS 01/19/17	ST	.XXX	±.005		TITLE	SCALE	1=4.2	
001	ADDED REGAL LOGO	SRK 02/23/16	GR	.XXXX	±.0005		OUTLINE	REF	18748501-001	
							15 HP	FMF		
						MAT'L.	PREV			
						FINISH				
THIS DRAWING IN DESIGN AND DETAIL IS OUR PROPERTY AND MUST NOT BE USED EXCEPT IN CONNECTION WITH OUR WORK ALL RIGHTS OF DESIGN AND INVENTION ARE RESERVED THIS IS AN ELECTRONICALLY GENERATED DOCUMENT - DO NOT SCALE THIS PRINT							RFP	CAD FILE	037977	
							DIST	LB		
							SIZE	DRAWING NO.	PAGE 1 OF 1	REV.
							A	037977		003