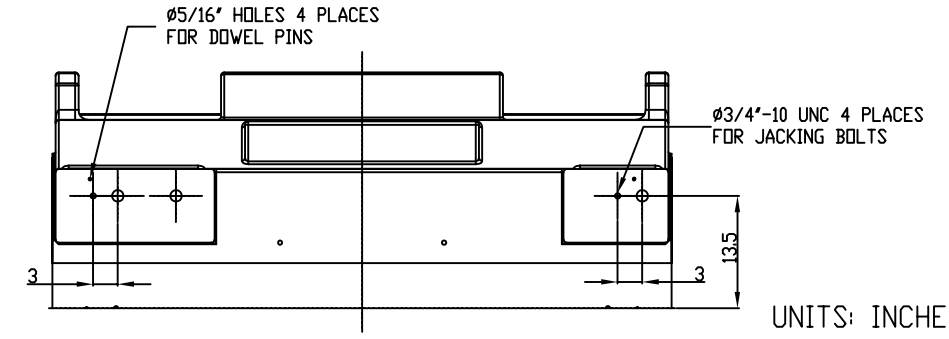
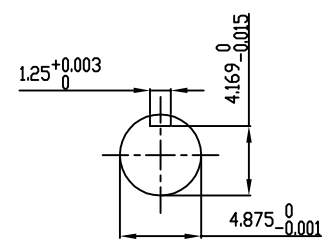


**TECHNICAL INFORMATION**

- BEARING LUBRICATION DE: MOBIL POLYREX EM OR EQUIVALENT  
ODE: MOBIL POLYREX EM OR EQUIVALENT
- BEARING TYPE DE: 6328 INS  
ODE: 6328 INS
- WINDING TEMP. DETECTORS  
NUMBER AND TYPE: 6xRTD(Pt0°C-100ohm)  
LOCATION: IN STATOR SLOT
- BEARING TEMP. DETECTORS  
NUMBER AND TYPE: \_\_\_\_\_
- SPACE HEATER 1 PHASE  
VOLTS: 120 WATTS: 800
- ROTATION: CCW VIEWED FROM NON DRIVE END  
THIS MOTOR IS UNI DIRECTIONAL
- MOTOR PAINT COLOR: GRAY
- APPROX. WEIGHT: 14,000 Lbs
- ACCESORIES: \_\_\_\_\_

**PRELIMINARY  
FOR QUOTATION ONLY  
DO NOT BUILD  
FROM THIS DRAWING**



UNITS: INCHES

DRAWING LIST		NO.	REVISION	BY	DATE
MAIN TERMINAL BOX 130P-7550-68					
AUX TERMINAL BOX FOR					
SPACE HEATER	139-0052-01	2	GRS FROM SRI JACKING TO INLINE	RWS	1/2/14
R.T.D.	139-0052-04	1	UPDATE INLET WINDOW SIZE & MAIN T-BOX P. No., CHG. SPACE HEATER WATTS FROM 400	JMP	10/12/11
THERMISTOR	N/A				
		0	FIRST ISSUE	JMP	03/01/11
PRODUCTION #	N/A				

MOTOR OUTLINE FOR THREE PHASE INDUCTION MOTOR									
CUSTOMER NAME				P.O. NO.	MOTOR TAG NO.				
OUTPUT HP	POLE	VOLTAGE V	FREQUENCY Hz	FULL LOAD SPEED (min <sup>-1</sup> )	TOSHIBA MODEL NO.				
TYPE	FORM	INS. CLASS	RATING	FRAME	S.F.	ENCLOSURE			
	4	F	CONT.	6813US		WP-II			
TOSHIBA INTERNATIONAL CORPORATION HOUSTON, TEXAS U.S.A.									
3rd ANGLE PROJ.	PREPARED BY:	DATE:	CHECKED BY:	DATE:	DRAWING NO.:	REV.			
	J.PINON	03/01/11	B.SIDLE	03/01/11	MDSL0087-62	2			