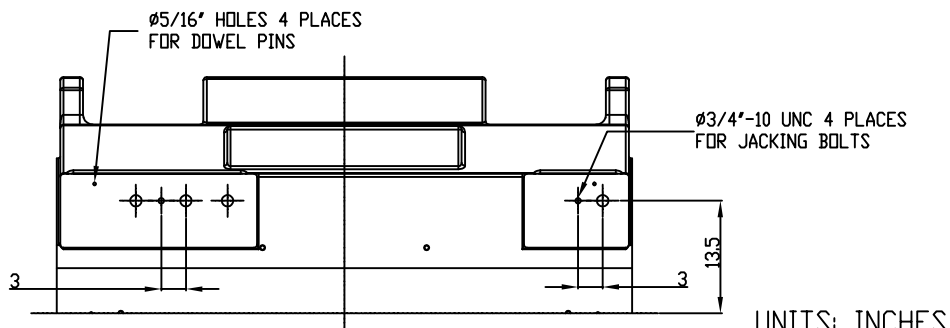
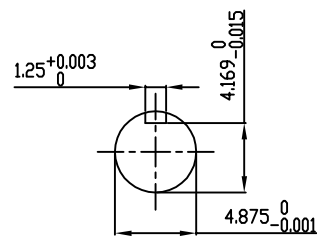


**TECHNICAL INFORMATION**

1. BEARING LUBRICATION DE: TURBINE OIL ISO VG32  
ODE: TURBINE OIL ISO VG32
2. BEARING TYPE DE: M11-125 INS  
ODE: M11-125 INS
3. WINDING TEMP. DETECTORS  
NUMBER AND TYPE: 6xRTD(PtO°C-100ohm)  
LOCATION: IN STATOR SLOT
4. BEARING TEMP. DETECTORS  
NUMBER AND TYPE: \_\_\_\_\_
5. SPACE HEATER 1 PHASE  
VOLTS: 120 WATTS: 800
6. ROTATION: CCW VIEWED FROM NON DRIVE END  
THIS MOTOR IS UNI DIRECTIONAL
7. MOTOR PAINT COLOR: GRAY
8. APPROX. WEIGHT: 14,000 Lbs
9. ACCESORIES: \_\_\_\_\_

**PRELIMINARY  
FOR QUOTATION ONLY  
DO NOT BUILD  
FROM THIS DRAWING**



UNITS: INCHES

DRAWING LIST		MOTOR OUTLINE FOR THREE PHASE INDUCTION MOTOR					
MAIN TERMINAL BOX 130P-7550-68		CUSTOMER NAME		P.O. NO.		MOTOR TAG NO.	
AUX TERMINAL BOX FOR		OUTPUT HP	POLE 4	VOLTAGE V	FREQUENCY Hz	FULL LOAD SPEED (min <sup>-1</sup> )	
SPACE HEATER	139-0052-01	TYPE	FORM	INS. CLASS F	RATING CONT.	FRAME 6810US	TOSHIBA MODEL NO. S.F. ENCLOSURE WP-II
R.T.D.	139-0052-04	TOSHIBA INTERNATIONAL CORPORATION HOUSTON, TEXAS U.S.A.					
THERMISTOR	N/A	3rd ANGLE PROJ.	PREPARED BY: B SIDLE	DATE: 11/10/10	CHECKED BY: J.PINON	DATE: 11/10/10	DRAWING NO.: MDSL0087-66
PRODUCTION #	N/A	NO.	REVISION	BY	DATE	REV.	2
		2	JACKING TO INLINE	RWS	1/3/14		
		1	UPDATE INLET WINDOW SIZE & MAIN T-BOX P. No., CHG. SPACE HEATER WATTS FROM 400	JMP	10/12/11		
		0	FIRST ISSUE	BCS	11/10/10		