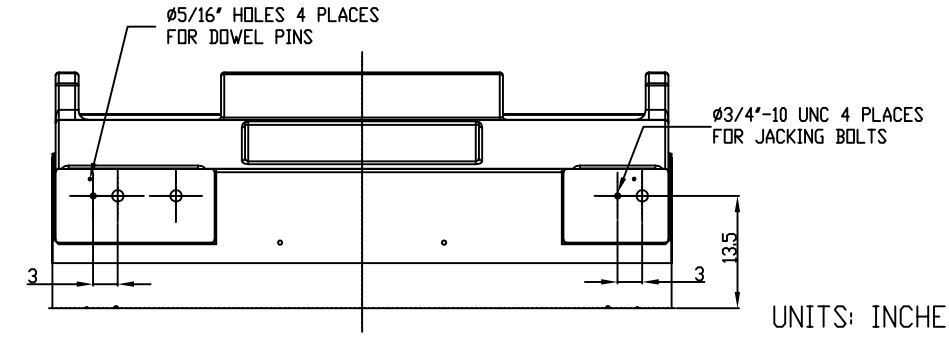
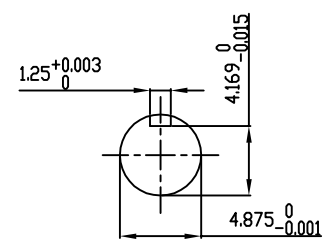


TECHNICAL INFORMATION

1. BEARING LUBRICATION DE: MOBIL POLYREX EM OR EQUIVALENT
ODE: MOBIL POLYREX EM OR EQUIVALENT
2. BEARING TYPE DE: 6328 INS
ODE: 6328 INS
3. WINDING TEMP. DETECTORS
NUMBER AND TYPE: 6xRTD(Pt0°C-100ohm)
LOCATION: IN STATOR SLOT
4. BEARING TEMP. DETECTORS
NUMBER AND TYPE: _____
5. SPACE HEATER 1 PHASE
VOLTS: 120 WATTS: 800
6. ROTATION: CCW VIEWED FROM NON DRIVE END
THIS MOTOR IS UNI DIRECTIONAL
7. MOTOR PAINT COLOR: GRAY
8. APPROX. WEIGHT: 14,000 Lbs
9. ACCESSORIES:

**PRELIMINARY
FOR QUOTATION ONLY
DO NOT BUILD
FROM THIS DRAWING**



UNITS: INCHES

DRAWING LIST		MOTOR OUTLINE FOR THREE PHASE INDUCTION MOTOR																							
MAIN TERMINAL BOX 130P-7550-68					CUSTOMER NAME			P.O. NO.		MOTOR TAG NO.															
AUX TERMINAL BOX FOR		2	GRS FROM SRI JACKING TO INLINE		RWS		1/2/14		OUTPUT HP		POLE 4		VOLTAGE V		FREQUENCY Hz		FULL LOAD SPEED (min ⁻¹)		TOSHIBA MODEL NO.						
SPACE HEATER 139-0052-01			R.T.D. 139-0052-04		1		UPDATE INLET WINDOW SIZE & MAIN T-BOX P. No., CHG. SPACE HEATER WATTS FROM 400		JMP		10/12/11		TYPE		FORM		INS. CLASS F		RATING CONT.		FRAME 6813US		S.F.		ENCLOSURE WP-II
THERMISTOR N/A		0		FIRST ISSUE		JMP		03/01/11		TOSHIBA INTERNATIONAL CORPORATION HOUSTON, TEXAS U.S.A.															
PRODUCTION #		N/A		NO.		REVISION		BY		DATE		3rd ANGLE PROJ.		PREPARED BY: J.PINON		DATE: 03/01/11		CHECKED BY: B.SIDLE		DATE: 03/01/11		DRAWING NO.: MDSL0087-62		REV. 2	