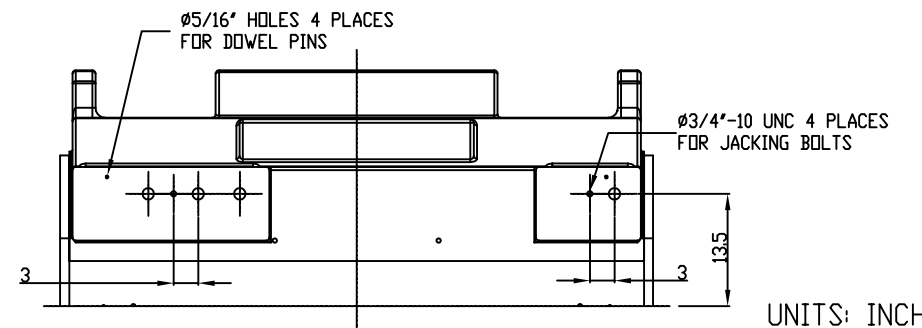
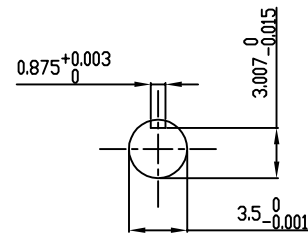


**TECHNICAL INFORMATION**

1. BEARING LUBRICATION DE: TURBINE OIL ISO VG32  
ODE: TURBINE OIL ISO VG32
2. BEARING TYPE DE: M9-90 INS  
ODE: M9-90 INS
3. WINDING TEMP. DETECTORS  
NUMBER AND TYPE: 6xRTD(Pt0°C-100ohm)  
LOCATION: IN STATOR SLOT
4. BEARING TEMP. DETECTORS  
NUMBER AND TYPE: \_\_\_\_\_
5. SPACE HEATER 1 PHASE  
VOLTS: 120 WATTS: 800
6. ROTATION: CCW VIEWED FROM NON DRIVE END  
THIS MOTOR IS UNI DIRECTIONAL
7. MOTOR PAINT COLOR: GRAY
8. APPROX. WEIGHT: 12,500 Lbs
9. ACCESORIES:

**PRELIMINARY  
FOR QUOTATION ONLY  
DO NOT BUILD  
FROM THIS DRAWING**



UNITS: INCHES

DRAWING LIST		MOTOR OUTLINE FOR THREE PHASE INDUCTION MOTOR									
MAIN TERMINAL BOX 130P-7550-68	3	JACKING TO INLINE	RWS	1/3/14	CUSTOMER NAME		P.O. NO.	MOTOR TAG NO.			
AUX TERMINAL BOX FOR	2	UPDATE INLET WINDOW SIZE & MAIN T-BOX P. No., CHG. SPACE HEATER WATTS FROM 400	JMP	10/12/11	OUTPUT HP	POLE 2	VOLTAGE V	FREQUENCY Hz	FULL LOAD SPEED (min <sup>-1</sup> )	TOSHIBA MODEL NO.	
SPACE HEATER	139-0052-01	1 ADD PROBE PROV. RINGS & ODE BEARING CAP	JMP	04/05/11	TYPE	FORM	INS. CLASS F	RATING CONT.	FRAME 6810USS	S.F.	ENCLOSURE WP-II
R.T.D.	139-0052-04				TOSHIBA INTERNATIONAL CORPORATION HOUSTON, TEXAS U.S.A.						
THERMISTOR	N/A	0 FIRST ISSUE	JMP	05/20/10	3rd ANGLE PROJ.	PREPARED BY: J.PINON	DATE: 05/20/10	CHECKED BY: B.SIDLE	DATE: 05/20/10	DRAWING NO.: MDSL0087-65	REV.: 3
PRODUCTION #	N/A	NO. REVISION	BY	DATE							