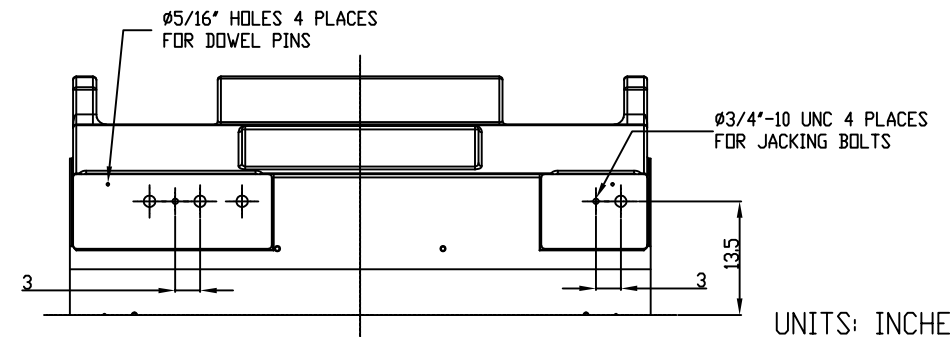
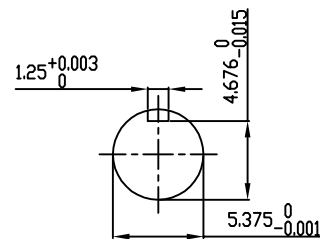


**TECHNICAL INFORMATION**

- BEARING LUBRICATION DE: TURBINE OIL ISO VG32  
ODE: TURBINE OIL ISO VG32
- BEARING TYPE DE: M11-125 INS  
ODE: M11-125 INS
- WINDING TEMP. DETECTORS  
NUMBER AND TYPE: 6xRTD(Pt0°C-100ohm)  
LOCATION: IN STATOR SLOT
- BEARING TEMP. DETECTORS  
NUMBER AND TYPE: \_\_\_\_\_
- SPACE HEATER 1 PHASE  
VOLTS: 120 WATTS: 800
- ROTATION: CCW VIEWED FROM NON DRIVE END  
THIS MOTOR IS BI DIRECTIONAL
- MOTOR PAINT COLOR: GRAY
- APPROX. WEIGHT: 14,000 Lbs
- ACCESORIES:

**PRELIMINARY  
FOR QUOTATION ONLY  
DO NOT BUILD  
FROM THIS DRAWING**



UNITS: INCHES

DRAWING LIST		NO.	REVISION	BY	DATE
MAIN TERMINAL BOX 130P-7550-68		3	JACKING TO INLINE	RWS	1/3/14
AUX TERMINAL BOX FOR		2	UPDATE TOP HAT EXHAUST WINDOWS	JMP	03/01/12
SPACE HEATER	130-7520-50	1	CHG. SPACE HEATER WATTS FROM 400	JMP	10/12/11
R.T.D.	130-7522-51				
THERMISTOR	N/A	0	FIRST ISSUE	JMP	10/04/11
PRODUCTION #	N/A				

**MOTOR OUTLINE FOR  
THREE PHASE INDUCTION MOTOR**

CUSTOMER NAME				P.O. NO.	MOTOR TAG NO.	
OUTPUT HP	POLE	VOLTAGE V	FREQUENCY Hz	FULL LOAD SPEED (min <sup>-1</sup> )	TOSHIBA MODEL NO.	
TYPE	FORM	INS. CLASS	RATING CONT.	FRAME	S.F.	ENCLOSURE
	8	F		6810US		WP-II
TOSHIBA INTERNATIONAL CORPORATION HOUSTON, TEXAS U.S.A.						
3rd ANGLE PROJ.	PREPARED BY:	DATE:	CHECKED BY:	DATE:	DRAWING NO.:	REV.
	J.PINON	10/04/11	B SIDLE	10/4/11	MDSL0087-70	3