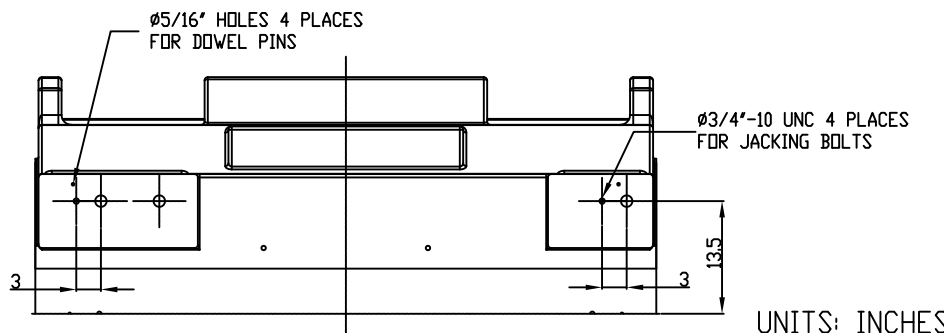
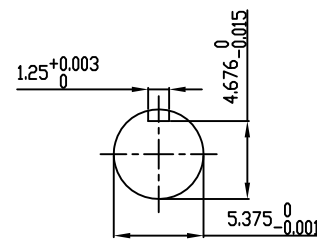


**TECHNICAL INFORMATION**

1. BEARING LUBRICATION DE: TURBINE OIL ISO VG32  
ODE: TURBINE OIL ISO VG32
2. BEARING TYPE DE: M11-125 INS  
ODE: M11-125 INS
3. WINDING TEMP. DETECTORS  
NUMBER AND TYPE: 6xRTD(Pt0°C-100ohm)  
LOCATION: IN STATOR SLOT
4. BEARING TEMP. DETECTORS  
NUMBER AND TYPE: \_\_\_\_\_
5. SPACE HEATER 1 PHASE  
VOLTS: 120 WATTS: 800
6. ROTATION: CCW VIEWED FROM NON DRIVE END  
THIS MOTOR IS BI DIRECTIONAL
7. MOTOR PAINT COLOR: GRAY
8. APPROX. WEIGHT: 14,000 Lbs
9. ACCESSORIES:

**PRELIMINARY  
FOR QUOTATION ONLY  
DO NOT BUILD  
FROM THIS DRAWING**



UNITS: INCHES

DRAWING LIST				MOTOR OUTLINE FOR THREE PHASE INDUCTION MOTOR									
MAIN TERMINAL BOX 130P-7550-68		3	JACKING TO INLINE	RWS	1/3/14	CUSTOMER NAME		P.O. NO.		MOTOR TAG NO.			
AUX TERMINAL BOX FOR		2	UPDATE TOP HAT EXHAUST WINDOWS	JMP	03/01/12	OUTPUT HP	POLE 8	VOLTAGE V	FREQUENCY Hz	FULL LOAD SPEED (min <sup>-1</sup> )		TOSHIBA MODEL NO.	
SPACE HEATER	130-7520-50	1	CHG. SPACE HEATER WATTS FROM 400	JMP	10/12/11	TYPE	FORM	INS. CLASS F	RATING CONT.	FRAME 6813US	S.F.	ENCLOSURE WP-II	
R.T.D.	130-7522-51	0	FIRST ISSUE	JMP	10/04/11	TOSHIBA INTERNATIONAL CORPORATION HOUSTON, TEXAS U.S.A.							
THERMISTOR	N/A					3rd ANGLE PROJ.	PREPARED BY: J.PINON	DATE: 10/04/11	CHECKED BY: B SIDLE	DATE: 10/4/11	DRAWING NO.: MDSL0087-71	REV. 3	
PRODUCTION #	N/A	NO.	REVISION	BY	DATE								