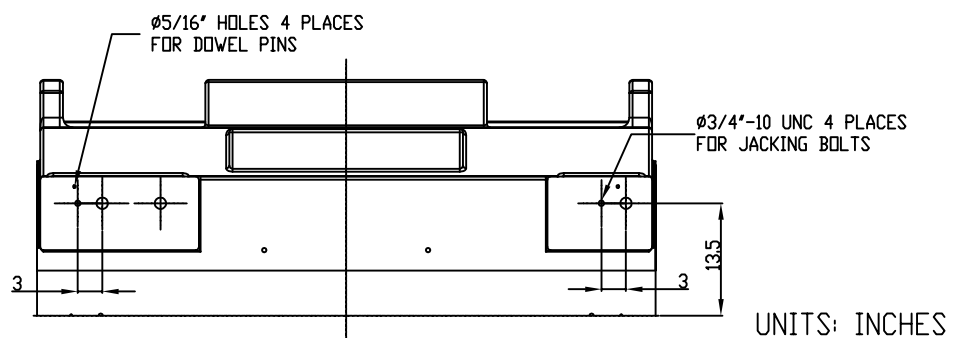
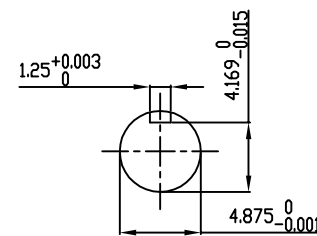


TECHNICAL INFORMATION

1. BEARING LUBRICATION DE: TURBINE OIL ISO VG32
ODE: TURBINE OIL ISO VG32
2. BEARING TYPE DE: M11-125 INS
ODE: M11-125 INS
3. WINDING TEMP. DETECTORS
NUMBER AND TYPE: 6xRTD(Pt0°C-100ohm)
LOCATION: IN STATOR SLOT
4. BEARING TEMP. DETECTORS
NUMBER AND TYPE: _____
5. SPACE HEATER 1 PHASE
VOLTS: 120 WATTS: 800
6. ROTATION: CCW VIEWED FROM NON DRIVE END
THIS MOTOR IS UNI DIRECTIONAL
7. MOTOR PAINT COLOR: GRAY
8. APPROX. WEIGHT: 14,000 Lbs
9. ACCESORIES:

**PRELIMINARY
FOR QUOTATION ONLY
DO NOT BUILD
FROM THIS DRAWING**



UNITS: INCHES

DRAWING LIST		MOTOR OUTLINE FOR THREE PHASE INDUCTION MOTOR															
MAIN TERMINAL BOX <u>130P-7550-68</u>		CUSTOMER NAME			P.O. NO.			MOTOR TAG NO.									
AUX TERMINAL BOX FOR		OUTPUT HP		POLE		VOLTAGE V		FREQUENCY Hz		FULL LOAD SPEED (min ⁻¹)		TOSHIBA MODEL NO.					
SPACE HEATER	139-0052-01	TYPE		FORM		INS. CLASS		RATING CONT.		FRAME		S.F.	ENCLOSURE				
R.T.D.	139-0052-04	0		JACKING TO INLINE		RWS		1/3/14		TOSHIBA INTERNATIONAL CORPORATION HOUSTON, TEXAS U.S.A.							
THERMISTOR	N/A									1		UPDATE INLET WINDOW SIZE & MAIN T-BOX P. No., CHG. SPACE HEATER WATTS FROM 400		JMP		10/12/11	
PRODUCTION #		N/A		0		FIRST ISSUE		JMP									
NO.		REVISION		BY		DATE		PREPARED BY: J.PINON		DATE: 05/19/10		CHECKED BY: B.SIDLE		DATE: 05/19/10		REV. 2	

