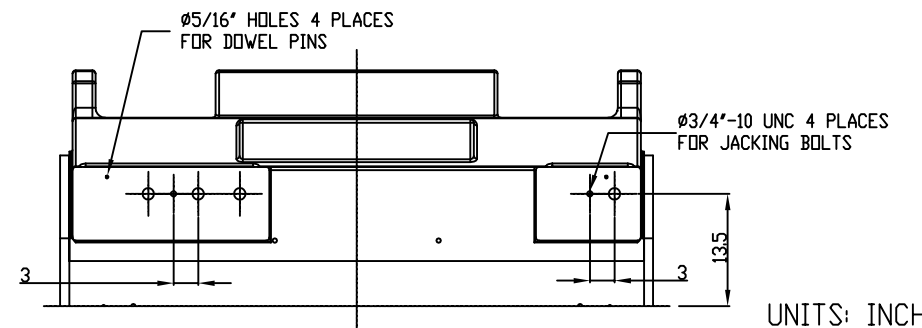
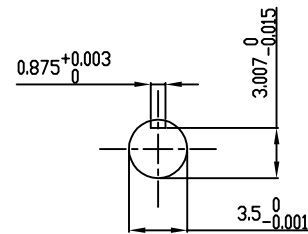


TECHNICAL INFORMATION

1. BEARING LUBRICATION DE: TURBINE OIL ISO VG32
ODE: TURBINE OIL ISO VG32
2. BEARING TYPE DE: M9-90 INS
ODE: M9-90 INS
3. WINDING TEMP. DETECTORS
NUMBER AND TYPE: 6xRTD(Pt0°C-100ohm)
LOCATION: IN STATOR SLOT
4. BEARING TEMP. DETECTORS
NUMBER AND TYPE: _____
5. SPACE HEATER 1 PHASE
VOLTS: 120 WATTS: 800
6. ROTATION: CCW VIEWED FROM NON DRIVE END
THIS MOTOR IS UNI DIRECTIONAL
7. MOTOR PAINT COLOR: GRAY
8. APPROX. WEIGHT: 12,500 Lbs
9. ACCESORIES:

**PRELIMINARY
FOR QUOTATION ONLY
DO NOT BUILD
FROM THIS DRAWING**



UNITS: INCHES

DRAWING LIST		MOTOR OUTLINE FOR THREE PHASE INDUCTION MOTOR										
MAIN TERMINAL BOX 130P-7550-68	3	JACKING TO INLINE	RWS	1/3/14	CUSTOMER NAME		P.O. NO.	MOTOR TAG NO.				
AUX TERMINAL BOX FOR	2	UPDATE INLET WINDOW SIZE & MAIN T-BOX P. No., CHG. SPACE HEATER WATTS FROM 400	JMP	10/12/11	OUTPUT HP	POLE 2	VOLTAGE V	FREQUENCY Hz	FULL LOAD SPEED (min ⁻¹)	TOSHIBA MODEL NO.		
SPACE HEATER	139-0052-01	1 ADD PROBE PROV. RINGS & ODE BEARING CAP	JMP	04/05/11	TYPE	FORM	INS. CLASS F	RATING CONT.	FRAME 6810USS	S.F.	ENCLOSURE WP-II	
R.T.D.	139-0052-04				TOSHIBA INTERNATIONAL CORPORATION HOUSTON, TEXAS U.S.A.							
THERMISTOR	N/A	0 FIRST ISSUE	JMP	05/20/10								
PRODUCTION #	N/A	NO.	REVISION	BY	DATE	3rd ANGLE PROJ.	PREPARED BY: J.PINON	DATE: 05/20/10	CHECKED BY: B.SIDLE	DATE: 05/20/10	DRAWING NO.: MDSL0087-65	REV.: 3