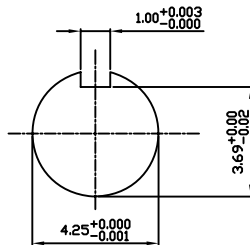


**TECHNICAL INFORMATION**

- BEARING LUBRICATION DE: CHEVRON SRI  
ODE: CHEVRON SRI
- BEARING TYPE DE: 6326C3  
ODE: 6326C3 INSULATED
- WINDING TEMP. DETECTORS  
NUMBER AND TYPE: 6xRTD(PtO°C-100ohm)  
LOCATION: IN STATOR SLOT
- BEARING TEMP. DETECTORS  
NUMBER AND TYPE: \_\_\_\_\_
- SPACE HEATER 1 PHASE  
VOLTS: 120 WATTS: 400
- ROTATION: CCW VIEWED FROM NON DRIVE END  
THIS MOTOR IS UNI DIRECTIONAL
- MOTOR PAINT COLOR: \_\_\_\_\_
- APPROX. WEIGHT: 7300 Lbs
- ACCESORIES: \_\_\_\_\_



**DRAWING LIST**

| NO. | REVISION    | BY | DATE    |
|-----|-------------|----|---------|
| 2   | UPDATE      | MH | 8/15/05 |
| 1   | UPDATE      | RW | 4/16/03 |
| 0   | FIRST ISSUE | RW | 3/25/03 |

|  |             |  |  |
|--|-------------|--|--|
| <b>MAIN TERMINAL BOX</b><br>130-7532-02  |             |  |  |
| <b>AUX TERMINAL BOX FOR SPACE HEATER</b> | 130-7520-50 |  |  |
| <b>R.T.D.</b>                            | 130-7522-51 |  |  |
| <b>THERMISTOR</b>                        | N/A         |  |  |
| <b>PRODUCTION #</b>                      | N/A         |  |  |

**MOTOR OUTLINE FOR THREE PHASE INDUCTION MOTOR**

| CUSTOMER NAME  |              |            |             | P.O. NO.                  | MOTOR TAG NO.     |
|--|--------------|------------|-------------|---------------------------|-------------------|
| OUTPUT   | POLE         | VOLTAGE    | FREQUENCY   | FULL LOAD SPEED           | TOSHIBA MODEL NO. |
| 1250 HP  | 4            | 4000 V     | 60 Hz       | 1775 (min <sup>-1</sup> ) | M255WTAL11E-A     |
| TYPE   | FORM         | INS. CLASS | RATING      | FRAME                     | S.F.              |
| TIKK   | DCKW         | F          | CONT.       | 5811/12                   | 1.15              |
| ENCLOSURE  |              |            |             |                           |                   |
| WP-II  |              |            |             |                           |                   |
| TOSHIBA INTERNATIONAL CORPORATION<br>HOUSTON, TEXAS U.S.A. |              |            |             |                           |                   |
| 3rd ANGLE PROJ.  | PREPARED BY: | DATE:      | CHECKED BY: | DATE:                     | DRAWING NO.:      |
|  | R. WILKINS   | 03/25/03   | M. HO       | 04/01/03                  | MDSL 0087-02      |
|  |              |            |             |                           | REV.              |
|  |              |            |             |                           | 2                 |