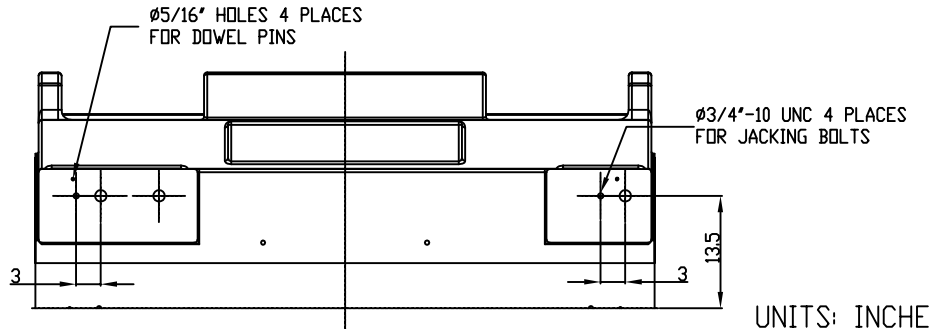
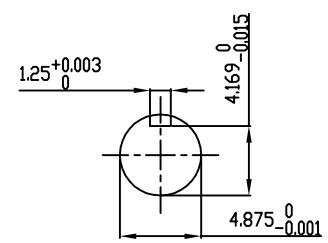


**PRELIMINARY  
FOR QUOTATION ONLY  
DO NOT BUILD  
FROM THIS DRAWING**



UNITS: INCHES

**TECHNICAL INFORMATION**

1. BEARING LUBRICATION DE: MOBIL POLYREX EM OR EQUIVALENT  
ODE: MOBIL POLYREX EM OR EQUIVALENT
2. BEARING TYPE DE: 6328 INS  
ODE: 6328 INS
3. WINDING TEMP. DETECTORS  
NUMBER AND TYPE: 6xRTD(Pt0°C-100ohm)  
LOCATION: IN STATOR SLOT
4. BEARING TEMP. DETECTORS  
NUMBER AND TYPE: \_\_\_\_\_
5. SPACE HEATER 1 PHASE  
VOLTS: 120 WATTS: 800
6. ROTATION: CCW VIEWED FROM NON DRIVE END  
THIS MOTOR IS UNI DIRECTIONAL
7. MOTOR PAINT COLOR: GRAY
8. APPROX. WEIGHT: 14,000 Lbs
9. ACCESORIES:

**DRAWING LIST**

<b>MAIN TERMINAL BOX</b> 130P-7550-68	
<b>AUX TERMINAL BOX FOR</b>	
SPACE HEATER	139-0052-01
R.T.D.	139-0052-04
THERMISTOR	N/A
PRODUCTION #	N/A

NO.	REVISION	BY	DATE
2	GRS FROM SRI JACKING TO INLINE	RWS	1/2/14
1	UPDATE INLET WINDOW SIZE & MAIN T-BOX P. No., CHG. SPACE HEATER WATTS FROM 400	JMP	10/12/11
0	FIRST ISSUE	JMP	03/01/11

**MOTOR OUTLINE FOR  
THREE PHASE INDUCTION MOTOR**

CUSTOMER NAME				P.O. NO.	MOTOR TAG NO.	
OUTPUT HP	POLE	VOLTAGE V	FREQUENCY Hz	FULL LOAD SPEED (min <sup>-1</sup> )	TOSHIBA MODEL NO.	
TYPE	FORM	INS. CLASS	RATING	FRAME	S.F.	ENCLOSURE
	4	F	CONT.	6813US		WP-II
TOSHIBA INTERNATIONAL CORPORATION HOUSTON, TEXAS U.S.A.						
3rd ANGLE PROJ.	PREPARED BY:	DATE:	CHECKED BY:	DATE:	DRAWING NO.:	REV.
	J.PINON	03/01/11	B.SIDLE	03/01/11	MDSL0087-62	2