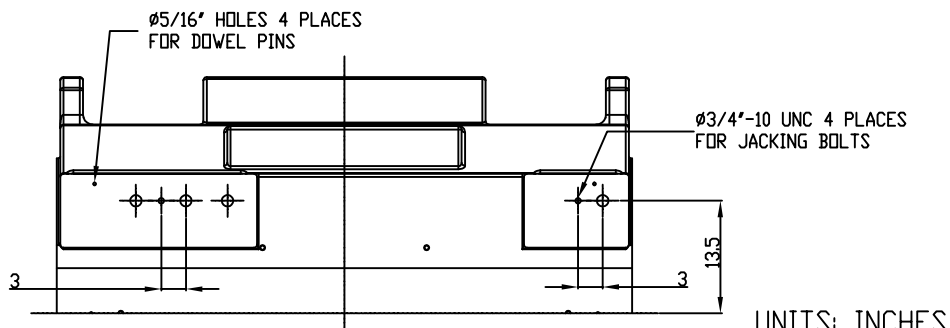
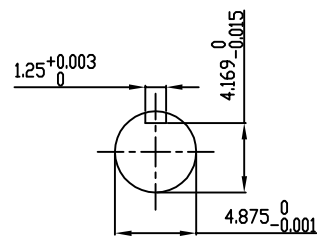


TECHNICAL INFORMATION

1. BEARING LUBRICATION DE: TURBINE OIL ISO VG32
ODE: TURBINE OIL ISO VG32
2. BEARING TYPE DE: M11-125 INS
ODE: M11-125 INS
3. WINDING TEMP. DETECTORS
NUMBER AND TYPE: 6xRTD(Pt0°C-100ohm)
LOCATION: IN STATOR SLOT
4. BEARING TEMP. DETECTORS
NUMBER AND TYPE: _____
5. SPACE HEATER 1 PHASE
VOLTS: 120 WATTS: 800
6. ROTATION: CCW VIEWED FROM NON DRIVE END
THIS MOTOR IS UNI DIRECTIONAL
7. MOTOR PAINT COLOR: GRAY
8. APPROX. WEIGHT: 14,000 Lbs
9. ACCESORIES: _____

**PRELIMINARY
FOR QUOTATION ONLY
DO NOT BUILD
FROM THIS DRAWING**



UNITS: INCHES

| DRAWING LIST | | | | MOTOR OUTLINE FOR THREE PHASE INDUCTION MOTOR | | | | | |
|-----------------------------------|-------------|-----|----------|------------------------------------------------------------|-------------------------|-------------------|------------------------|-----------------------------------------|-----------------------------|
| MAIN TERMINAL BOX 130P-7550-68 | | | | CUSTOMER NAME | | P.O. NO. | | MOTOR TAG NO. | |
| AUX TERMINAL BOX FOR | | | | OUTPUT HP | POLE 4 | VOLTAGE V | FREQUENCY Hz | FULL LOAD SPEED (min ⁻¹) | TOSHIBA MODEL NO. |
| SPACE HEATER | 139-0052-01 | | | TYPE | FORM | INS. CLASS F | RATING CONT. | FRAME 6810US | S.F. ENCLOSURE WP-II |
| R.T.D. | 139-0052-04 | | | TOSHIBA INTERNATIONAL CORPORATION HOUSTON, TEXAS U.S.A. | | | | | |
| THERMISTOR | N/A | | | 3rd ANGLE PROJ. | PREPARED BY: B SIDLE | DATE: 11/10/10 | CHECKED BY: J.PINON | DATE: 11/10/10 | DRAWING NO.: MDSL0087-66 |
| PRODUCTION # | N/A | NO. | REVISION | BY | DATE | | | REV. 2 | |