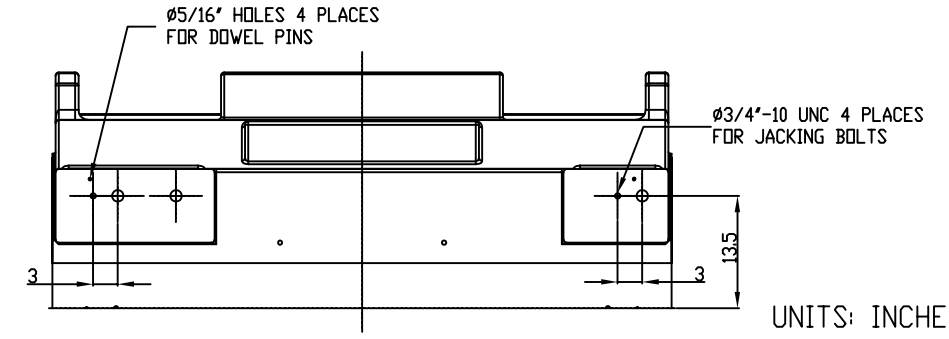
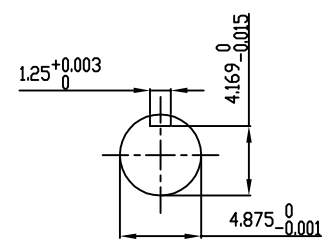


TECHNICAL INFORMATION

1. BEARING LUBRICATION DE: MOBIL POLYREX EM OR EQUIVALENT
ODE: MOBIL POLYREX EM OR EQUIVALENT
2. BEARING TYPE DE: 6328 INS
ODE: 6328 INS
3. WINDING TEMP. DETECTORS
NUMBER AND TYPE: 6xRTD(Pt0°C-100ohm)
LOCATION: IN STATOR SLOT
4. BEARING TEMP. DETECTORS
NUMBER AND TYPE: _____
5. SPACE HEATER 1 PHASE
VOLTS: 120 WATTS: 800
6. ROTATION: CCW VIEWED FROM NON DRIVE END
THIS MOTOR IS UNI DIRECTIONAL
7. MOTOR PAINT COLOR: GRAY
8. APPROX. WEIGHT: 14,000 Lbs
9. ACCESORIES: _____

**PRELIMINARY
FOR QUOTATION ONLY
DO NOT BUILD
FROM THIS DRAWING**



UNITS: INCHES

DRAWING LIST					MOTOR OUTLINE FOR THREE PHASE INDUCTION MOTOR								
MAIN TERMINAL BOX 130P-7550-68					CUSTOMER NAME		P.O. NO.		MOTOR TAG NO.				
AUX TERMINAL BOX FOR					OUTPUT HP	POLE 4	VOLTAGE V	FREQUENCY Hz	FULL LOAD SPEED (min ⁻¹)	TOSHIBA MODEL NO.			
SPACE HEATER	139-0052-01	2	GRS FROM SRI JACKING TO INLINE	RWS	1/2/14	TYPE	FORM	INS. CLASS F	RATING CONT.	FRAME 6813US	S.F.	ENCLOSURE WP-II	
R.T.D.	139-0052-04		1	UPDATE INLET WINDOW SIZE & MAIN T-BOX P. No., CHG. SPACE HEATER WATTS FROM 400	JMP	10/12/11	TOSHIBA INTERNATIONAL CORPORATION HOUSTON, TEXAS U.S.A.						
THERMISTOR	N/A	0	FIRST ISSUE	JMP	03/01/11	3rd ANGLE PROJ.		PREPARED BY: J.PINON	DATE: 03/01/11	CHECKED BY: B.SIDLE	DATE: 03/01/11	DRAWING NO.: MDSL0087-62	REV. 2
PRODUCTION #	N/A	NO.	REVISION	BY	DATE								