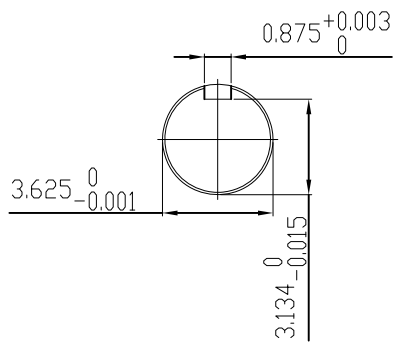


UNITS: INCHES

**TECHNICAL INFORMATION**

1. BEARING LUBRICATION DE: CHEVRON SRI  
ODE: CHEVRON SRI
2. BEARING TYPE DE: 6320C3  
ODE: 6320C3 INSULATED
3. WINDING TEMP. DETECTORS  
NUMBER AND TYPE: 6xRTD(Pt0°C-100ohm)  
LOCATION: IN STATOR SLOT
4. BEARING TEMP. DETECTORS  
NUMBER AND TYPE: \_\_\_\_\_
5. SPACE HEATER 1 PHASE  
VOLTS: 120 WATTS: 240
6. ROTATION: CCW VIEWED FROM NON DRIVE END  
THIS MOTOR IS BI DIRECTIONAL
7. MOTOR PAINT COLOR: GRAY
8. APPROX. WEIGHT: 5000 Lbs
9. ACCESORIES:



DRAWING LIST					MOTOR OUTLINE FOR THREE PHASE INDUCTION MOTOR							
<b>MAIN TERMINAL BOX</b> <u>130-7622-55</u>					CUSTOMER NAME			P.O. NO.		MOTOR TAG NO.		
					OUTPUT <b>450</b> HP	POLE <b>4</b>	VOLTAGE <b>4000</b> V	FREQUENCY <b>60</b> Hz	FULL LOAD SPEED (min <sup>-1</sup> )	TOSHIBA MODEL NO. <b>4504FTAL11E-A</b>		
<b>AUX TERMINAL BOX FOR</b> SPACE HEATER 130-7520-50 R.T.D. 130-7522-51 THERMISTOR N/A		1	CHG FAB. FC FOR C.I. FC	JMP	9/24/08	TYPE	FORM	INS. CLASS F	RATING CONT.	FRAME 5011US	S.F.	ENCLOSURE TEFC
PRODUCTION # <u>N/A</u> NO. _____ REVISION _____ BY _____ DATE _____					<b>TOSHIBA INTERNATIONAL CORPORATION</b> HOUSTON, TEXAS U.S.A.							
					3rd ANGLE PROJ.	PREPARED BY: B SIDLE	DATE: 4/24/07	CHECKED BY: S Johnson	DATE: 4/26/07	DRAWING NO.: MDSL0071-15	REV. 1	