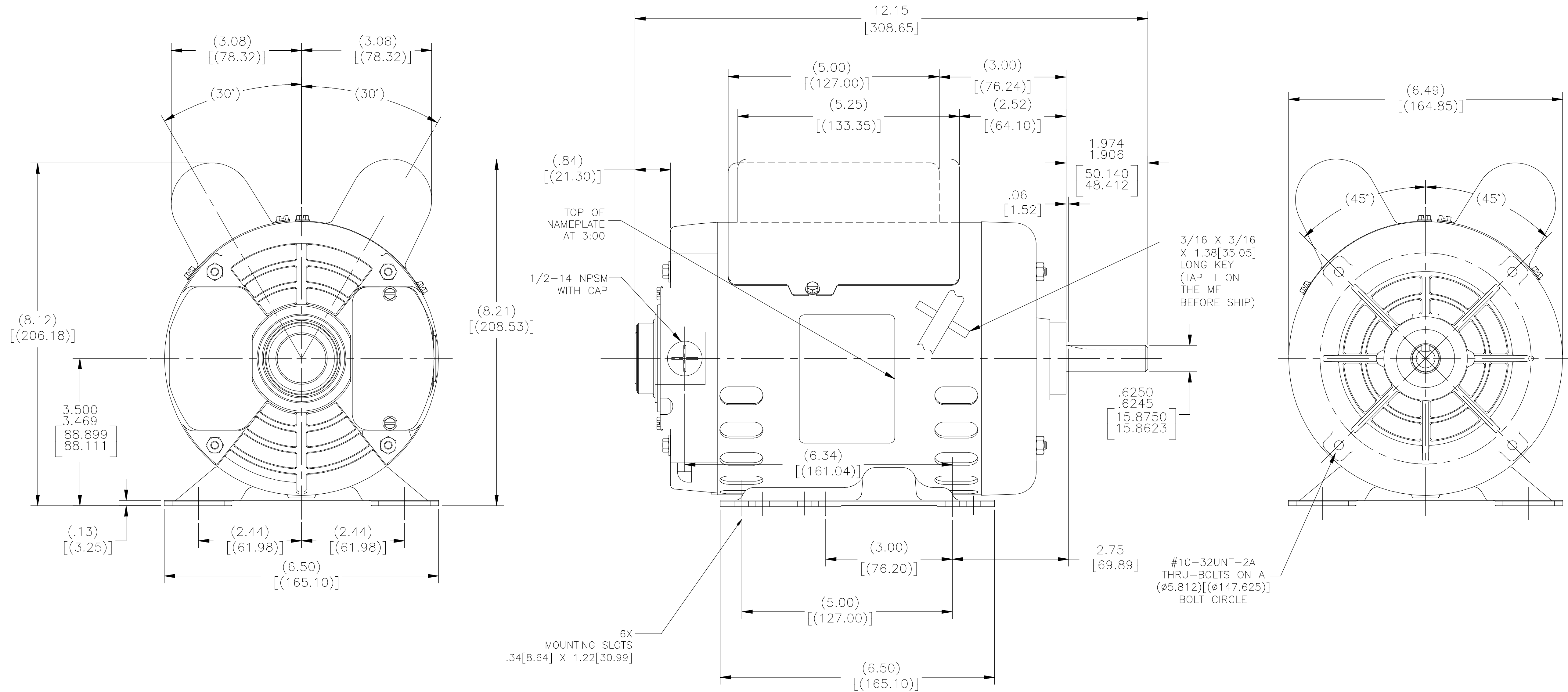


ALL DIMENSIONS SHOWN IN PARENTHESIS ARE REFERENCE DIMENSIONS. ALL OTHER DIMENSIONS ARE TOLERANCED PER THE FOLLOWING CHART UNLESS OTHERWISE SPECIFIED.

"OVERALL" DIMENSION = ±.055[1.397]  
 SHAFT EXTENSION = ±.034[.864]  
 LEAD LENGTHS = ±1.00[25.40]  
 EXTENDED THRU-BOLTS = ±.050[1.270]  
 ANGULAR DIMENSIONS = ±2°

MOTOR TO BE OVERSPRAYED WITH LIQUID PAINT



DRAWING REVISION	REVISION BY	DATE	TOLERANCES UNLESS OTHERWISE SPECIFIED	DRAWN BY	Regal Beloit America, Inc.
C	SN	01-17-2019	DEC. INCH mm ANGLE	X-AN	
ECO	APPROVED BY	DATE	X ±0.1 ±2.5 ±0.5°	DATE	01-27-2015
ECO-0160160	SN	01-17-2019	XX ±0.02 ±0.51	APPROVED BY	Y-LIU
ECO DESCRIPTION	CHANGED PART NUMBER		XXX ±0.005 ±0.127	DATE	01-27-2015
			XXXX ±0.0005 ±0.0127	APPROVED BY	Y-LIU
COPYRIGHT REGAL BELOIT AMERICA, INC. ALL RIGHTS RESERVED. PROPRIETARY AND CONFIDENTIAL INFORMATION - THIS DOCUMENT IS THE PROPERTY OF REGAL BELOIT AMERICA, INC. (OWNER) AND COMPANY OWNER'S PROPRIETARY INFORMATION. ANY FEDERAL, CORPORATION OR OTHER FORM REGISTRATION IS HEREBY BY RECEIVING IT TO AGREE THAT IT AND/OR ANY PART OF IT, SHALL NOT BE DISCLOSED TO ANY PERSON, CORPORATION OR OTHER ENTITY, IN ANY MANNER, WITHOUT THE EXPRESS WRITTEN APPROVAL OF REGAL BELOIT AMERICA, INC. THIS DOCUMENT SHALL BE RETURNED TO OWNER UPON REQUEST. IT MAY BE SUBJECT TO CERTAIN RESTRICTIONS UNDER APPLICABLE EXPORT CONTROL LAWS AND REGULATIONS.			REMOVE BURRS & BREAK SHARP EDGES .003/.015 [0.076/.381] CORNER FILLETS .02 [511] MACHINED SURFACES .125/32 INCH/mm mm SHOWN IN [BRACKETS]	DESCRIPTION MODEL-CFHP-56FR OUTLINE	MATERIAL -
			THIRD ANGLE PROJECTION	SIZE [DWS NO] D 056B11D15505	SHEET 1