

GENERAL INFORMATION:

SHAFT RUNOUT: .001[.03] T.I.R. PER 1.00[25.4] LENGTH OF EXTENSION

END PLAY: .010[.25] TO .063[1.60]

BEARINGS: SLEEVE

MOUNTING POSITION: ALL ANGLE

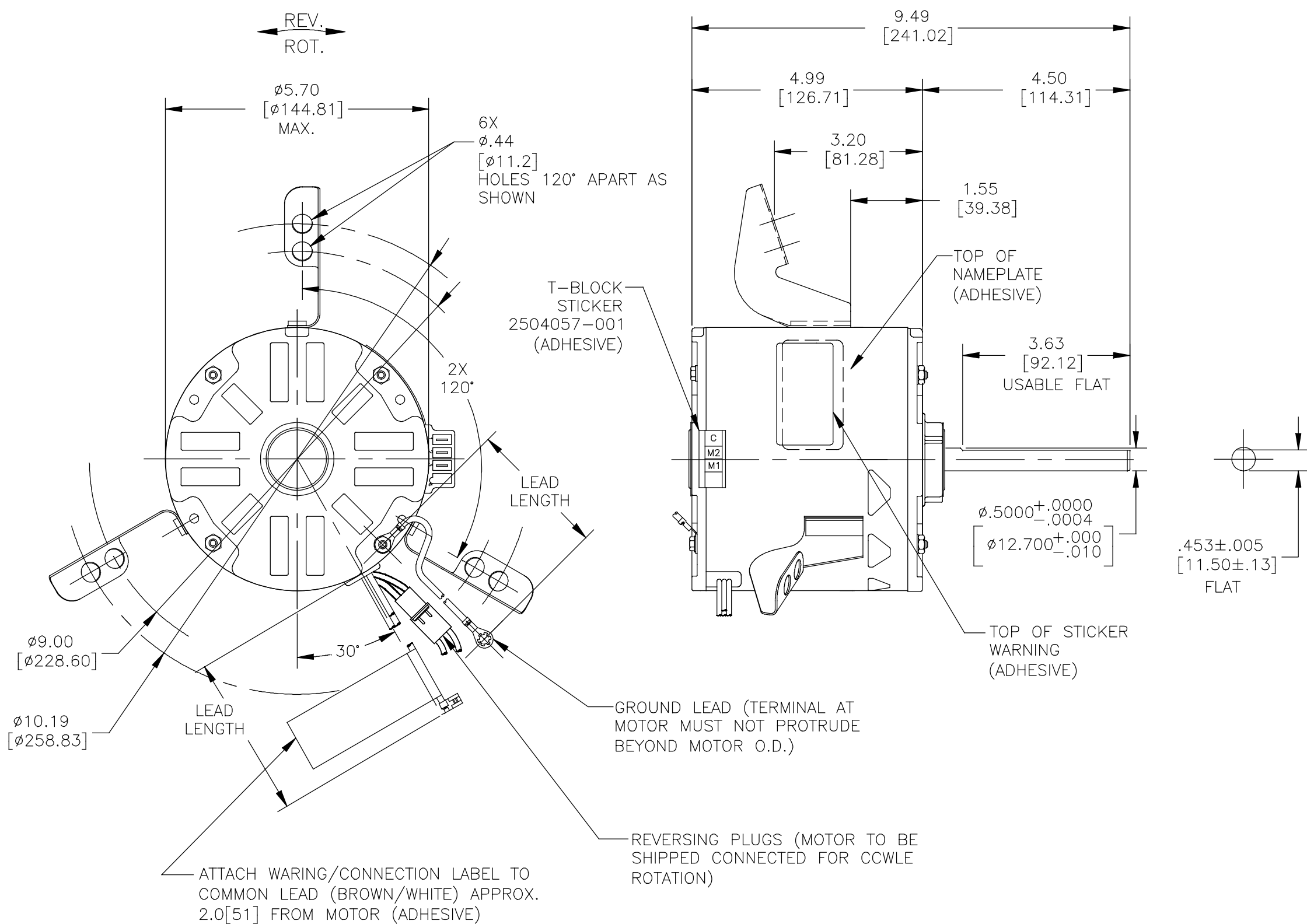
ELECTRICAL DATA:

OVERLOAD PROTECTOR: AUTOMATIC RESET (SENSATA 7AM 036)

LEADS: NO. 18 GA., .06[1.5] THK. PVC 105°C INSUL.

REVERSING LEADS: NO. 18 GA., .03[.8] THK., XLP 125°C. INSUL.

GROUND LEAD: NO. 16 GA., .03[.8] THK. GREEN/YELLOW INSUL.



NAMEPLATE DATA:		EXTERNAL CONNECTION DIAGRAM	
MODEL NO.:	F48Z86A01		
CUST. P/N:	9435V1A		
HP:	1/2		
ROT.:	REV.		
RPM:	1075		
TYPE:	UF		
FRAME:	48Y		
VOLTS:	277		
PH:	1		
AMPS:	2.8		
HZ:	60		
INS.:	B		
AMB.:	40° C		
DUTY:	AIR OVER		
CAP.:	10 MFD/370 V		
ENCL:	SEMI-ENCL		
UL LOGO			
CSA LOGO			
THERMALLY PROTECTED			

TERMINAL BLOCK		
	M2	.25[6.4] M.Q.C.
	M1	.25[6.4] M.Q.C.
	C	.25[6.4] M.Q.C.
GREEN/YE (GRD)	11.0/13.0 [279/330]	#10 EYELET
BLACK/WHITE	3.0/5.0 [76/127]	REVERSING PLUG (MALE)
BLACK/WHITE	3.0/5.0 [76/127]	REVERSING PLUG (FEMALE)
BROWN	11.0/13.0 [279/330]	.25[6.4] FLAG
BROWN/WHITE	11.0/13.0 [279/330]	.25[6.4] FLAG
COLOR	LENGTH	TERMINAL OR STRIP LENGTH

NOTES:
 3 FERRULES 616877
 3 GROMMETS 616878
 TO BE SHIPPED SEPARATE IN POLY BAG WITH EACH MOTOR

MAIN FRAME - OLE	SEMI-CLOSED
END FRAME - OLE	OPEN
MAIN FRAME - LE	SEMI-CLOSED
END FRAME - LE	OPEN

CUSTOMER	DISTRIBUTION SERVICE

PERFORMANCE CURVE NO.	TORQUE @1075 RPM (25°C)	APPROVED SAMPLE	UL COMPONENT		CSA	
			FILE #	CCN #	FILE #	CLASS #
C0001006	53.7 OZ. FT.	0701108A	E46412	PRGY2	LR43341	4211-01

DRAWING REVISION	REVISION BY	DATE
H	GELINE.ZHAO	08-15-2018
ECO	APPROVED BY SARA	DATE 08-15-2018
ECO-0150783		
SEE ECO		

COPYRIGHT REGAL BELOIT AMERICA, INC. ALL RIGHTS RESERVED. PROPRIETARY AND CONFIDENTIAL INFORMATION - THIS DOCUMENT IS THE PROPERTY OF REGAL BELOIT AMERICA, INC. ("OWNER") AND CONTAINS OWNER'S PROPRIETARY INFORMATION. ANY PERSON, CORPORATION OR OTHER FIRM RECEIVING IT IS DEEMED, BY RECEIVING IT, TO AGREE THAT IT, AND/OR ANY PART OF IT, SHALL NOT BE DISCLOSED TO ANY PERSON, CORPORATION OR OTHER ENTITY, DUPLICATED, AND/OR USED, EXCEPT AS EXPRESSLY APPROVED IN WRITING IN ADVANCE BY OWNER. THIS DOCUMENT SHALL BE RETURNED TO OWNER UPON REQUEST. IT MAY BE SUBJECT TO CERTAIN RESTRICTIONS UNDER APPLICABLE EXPORT CONTROL LAWS AND REGULATIONS.

ENCLOSURE	
DRAWN BY:	AMY
DATE:	09-07-2007
APPROVED BY:	XIAOQ
DATE:	09-07-2007
PROCESS/FINISH	
THIRD ANGLE PROJECTION	

REGAL Regal Beloit America, Inc.	
DESCRIPTION	MODEL-RFHP-48FR OUTLINE
MATERIAL	
SIZE	DWG NO 9435V1A
SHEET	1