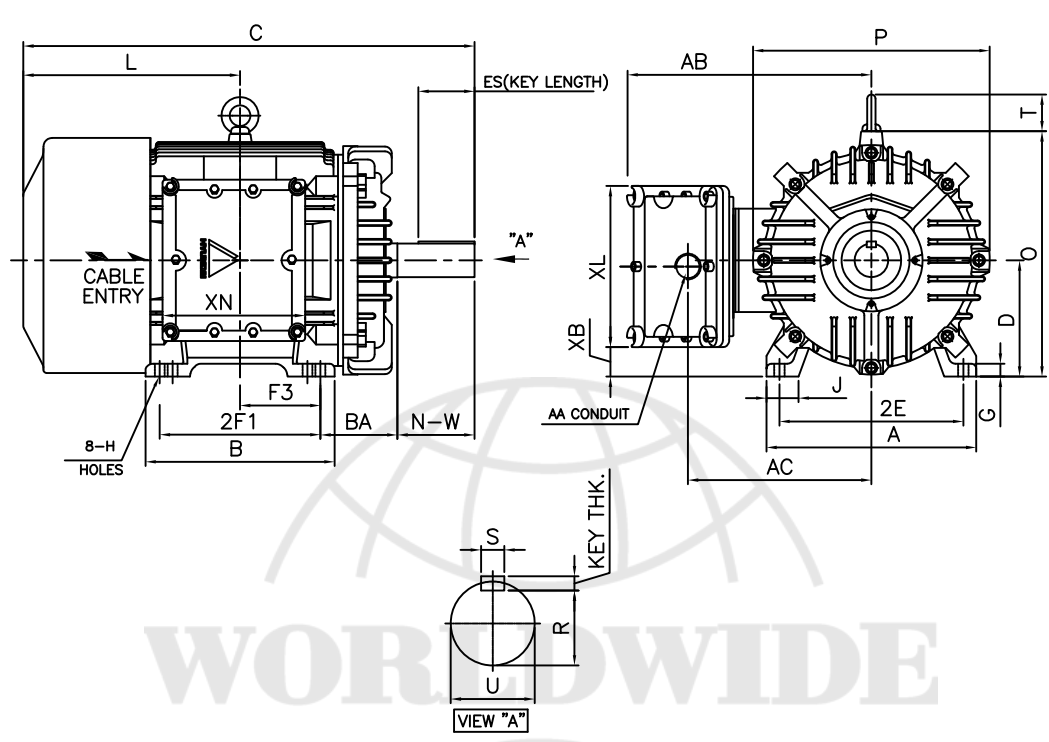


본 도면은 현대중공업(주) 재산이므로  
허가없이 복사할 수 없음 (취급주의)

THIS DRAWING IS PROPRIETARY TO HHI. NO PART OF THIS DRAWING  
MAYBE REPRODUCED WITHOUT THE PERMISSION OF HHI.

<b>HYUNDAI</b> HEAVY INDUSTRIES CO., LTD.	<h1>TEFC</h1> <b>THREE PHASE INDUCTION MOTOR</b>	<b>TYPE</b>	XKP, XIP Cast iron frame
--	---	-------------	-----------------------------

FRAME SIZE	OUTPUT(HP)	POLES	Hz	TIME RATING
365T			60	CONT



### DIMENSIONS

MOUNTING									CONDUIT BOX						APPROX. WGT.(LB)
A	B	2E	2F1	2F2	F3	G	J	H	AA	AB	AC	XB	XL	XN	
15.98	14.41	14.00	12.25	-	6.122	0.98	2.44	0.66	3.00	18.89	14.37	2.24	12.28	10.86	2P: 1087 or 4P: 1153 or 6P: 1173
OVERALL									SHAFT			KEY	BEARING		
BA	C	D	L	O	P	T	U	N-W	KEYWAY			THK.	DRIVE END	OPP. DRIVE END	
5.88	34.38	9.00	16.51	18.70	18.03	2.80	2.375	5.88	R	ES	S				
									2.021	4.28	0.625	0.625	6314C3	6213C3	

### NOTE

- Dimension "D" tolerance : +0.00inch - 0.03inch (143T-365T) ; +0.000inch - 0.06inch (404T-449T)
- Dimension "U" tolerance : +0.000inch - 0.005inch (143T-215T), +0.000inch - 0.001inch (254T-449T)
- Dimension "R" tolerance : +0.000inch - 0.015inch

Q'TY	DESCRIPTION	MATERIAL	DIMENSION	WEIGHT	PART NO.	REMARK	NO.
APPD BY	UNIT	mm	SUBJECT	365T		DWG SIZE	
CHKD BY	SCALE	1/15	TITLE	Outline			
CHKD BY	PROJEC'N	3각법(3rd Angle)	REF. NO	Sheet No. of			
DSND BY 김중선	DATE	2012-02-15	DWG NO	LM-U0365B3TL001	Revision No. 1		