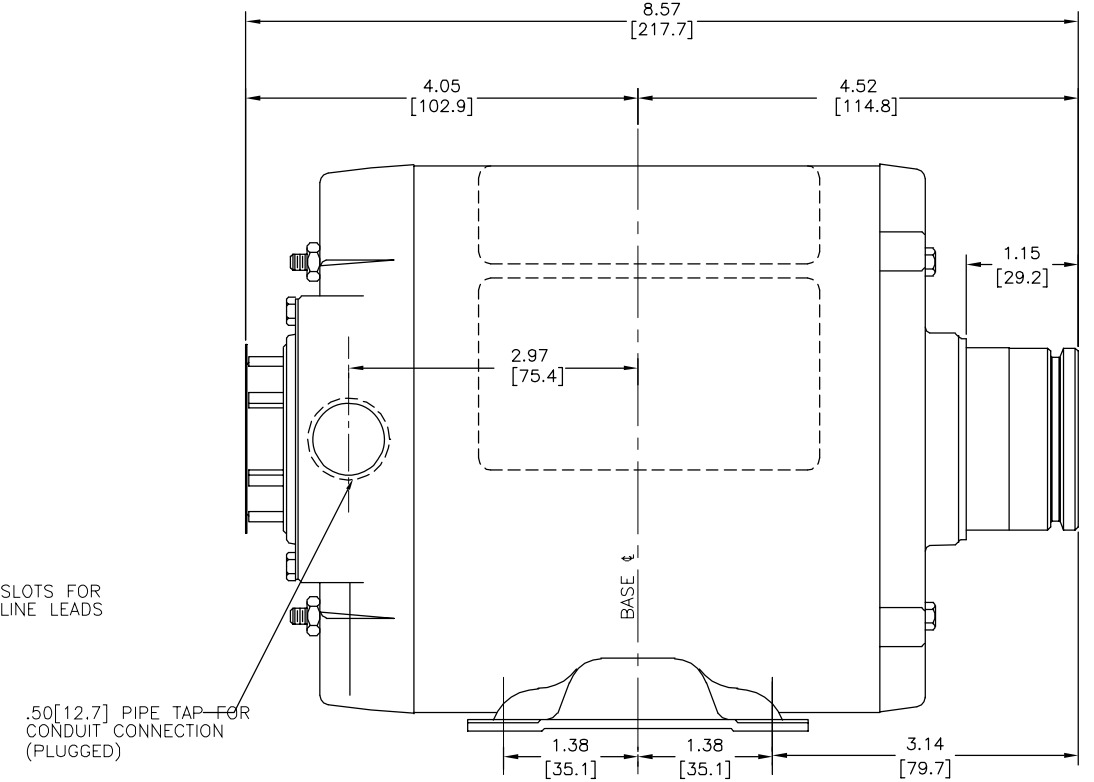
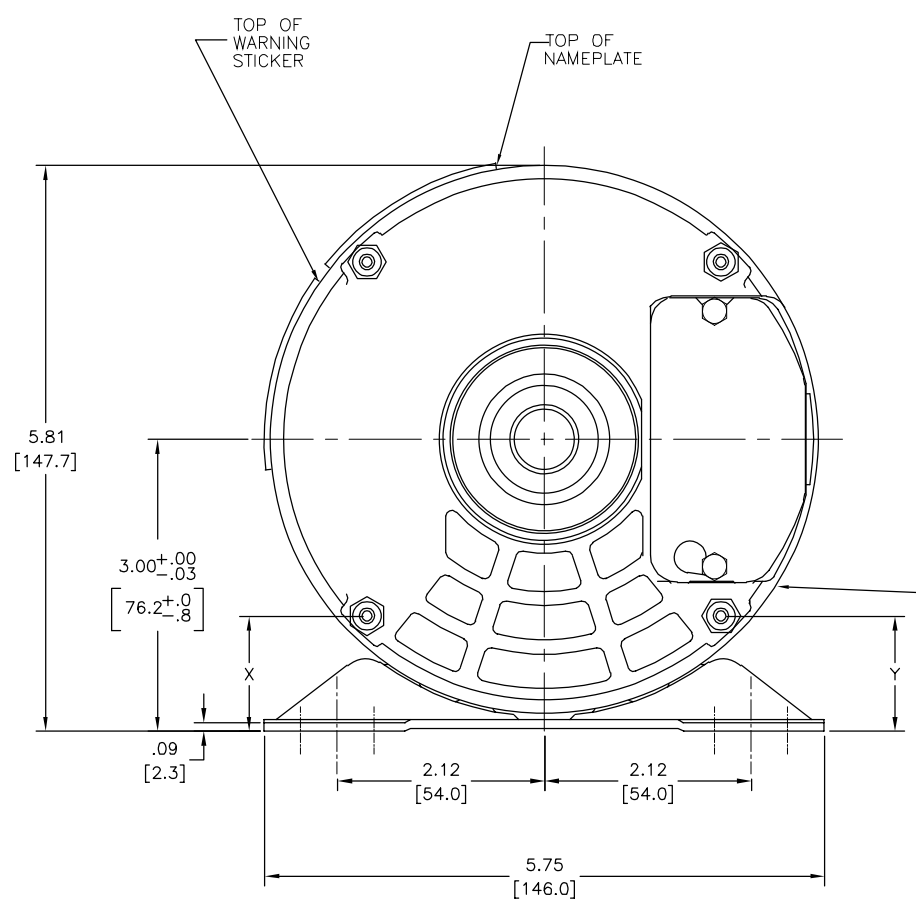
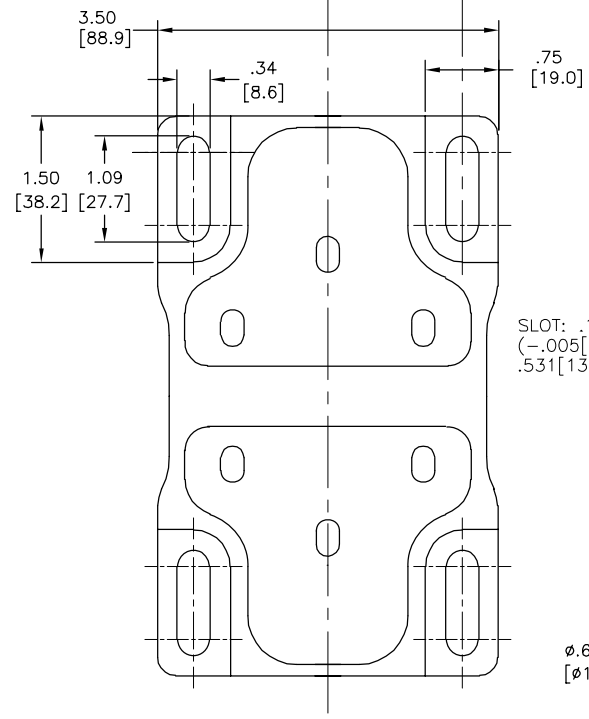
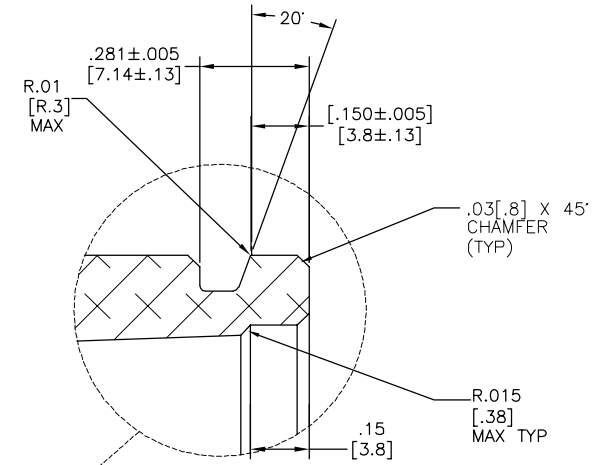
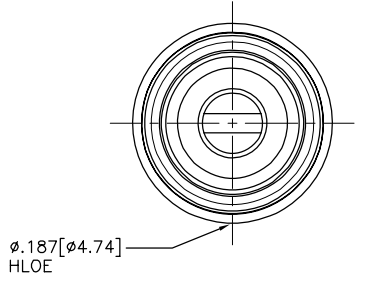


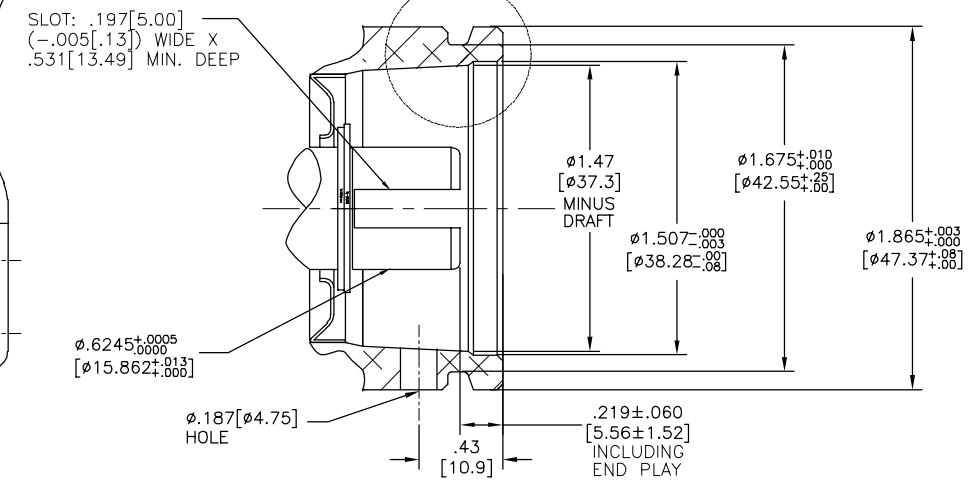
REV	ECO	REV BY	DATE	APPD	DATE
B	0025409	R. JARAMILLO	04-17-2012	R. RASCON	04-17-2012



SHAFT CONCENTRIC WITH $\phi 1.507$ [38.28] WITHIN .003 [.08] T.I.R. AND PERPENDICULAR WITH HUB FACE WITHIN .003 [.08] T.I.R.



BOTTOM VIEW OF BASE



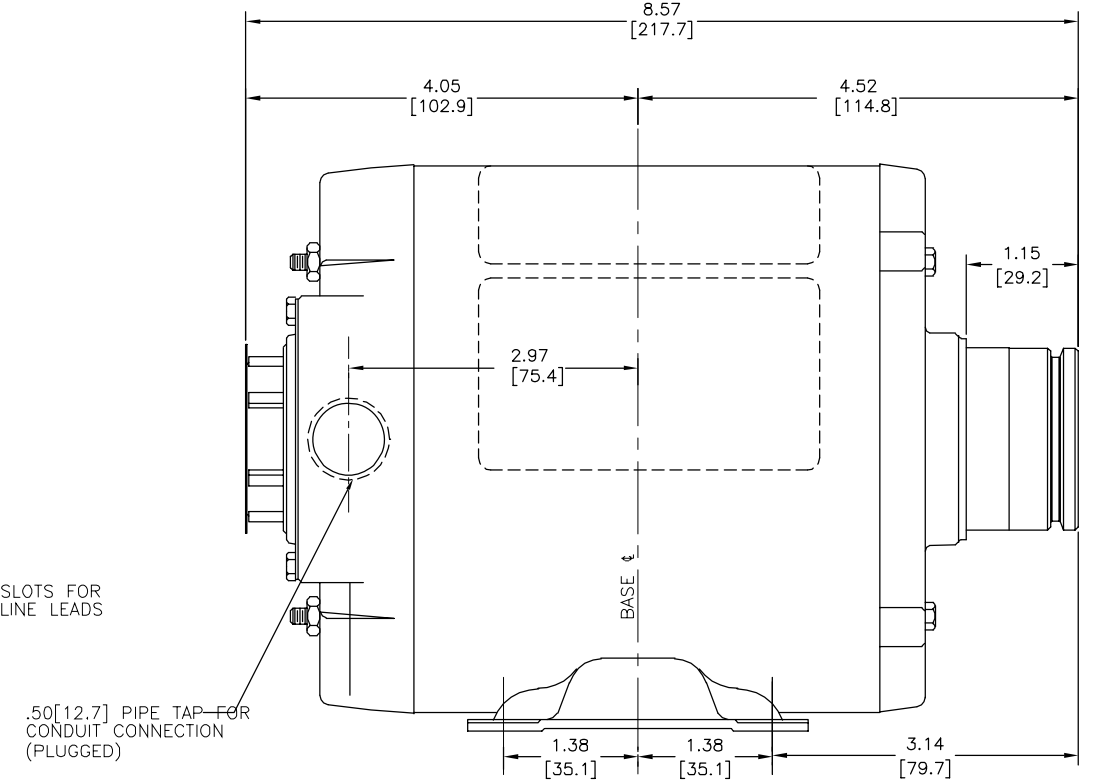
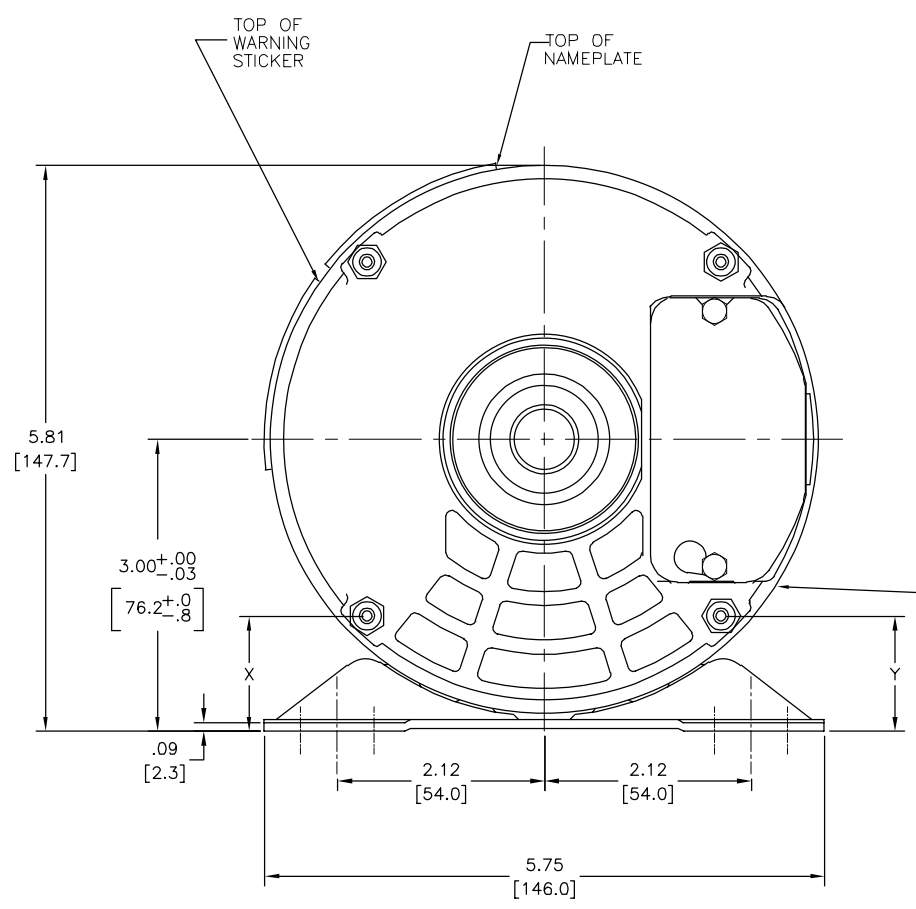
ENLARGED SECT. VIEW OF HUB

NOTE: THE BOTTOM THRU BOLT EXTENSION TO BE PARALLEL TO PLANE OF FOOT WITHIN .090 (A-B=0.0 \pm .090 AT THE NUT).

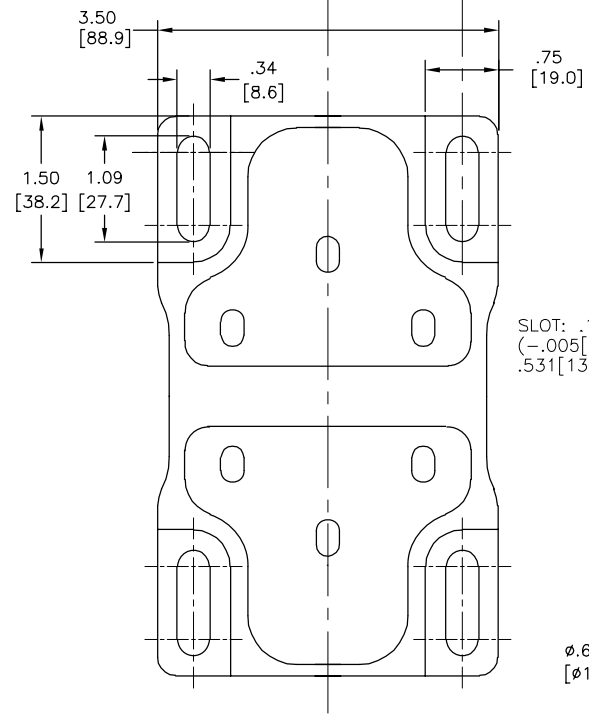
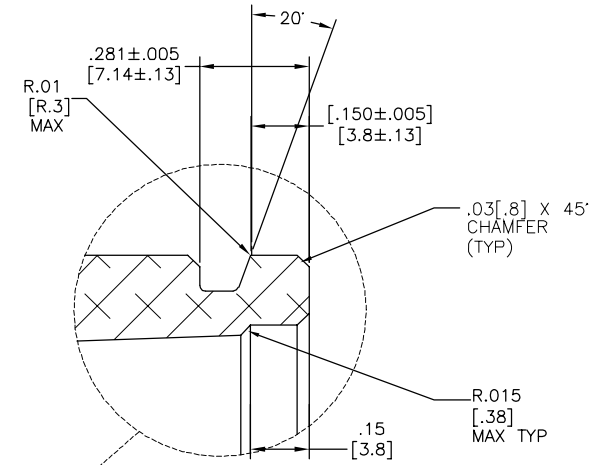
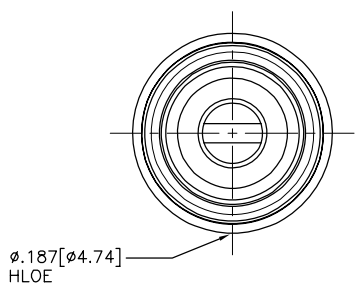
EL MOTOR DEBERA SER EMPACADO ANEXANDOSE EL CERTIFICADO DE CUMPLIMIENTO Y DEBERA LLEVAR EL NUMERO DE CODIGO EN CADA MOTOR.

GEOMETRIC CHARACTERISTICS & SYMBOLS □ FLATNESS ⊥ STRAIGHTNESS ∠ ANGULARITY ⊥ PERPENDICULARITY (SQUARENESS) // PARALLELISM ○ ROUNDNESS (CIRCULARITY) Ⓞ CYLINDRICITY ≻ PROFILE OF ANY SURFACE ≽ PROFILE OF ANY LINE ↗ RUNOUT ⊕ TRUE POSITION ⊙ CONCENTRICITY = SYMMETRY	UNLESS OTHERWISE SPECIFIED DIM. TOLERANCES ARE AS FOLLOWS: INCH $\pm .01$ $\pm .02$ $\pm .005$ $\pm .0005$ mm ± 0.5 ± 0.13 ± 0.013 ANG. ± 50 DEG REMOVE BURRS & BREAK SHARP EDGES: INCH .003-.015 mm 0.1-0.4 CORNER FILLETS TO: INCH .020 mm 0.5 MACHINE SURFACES: INCH 125 mm 3.2 METRIC DIMS. SHOWN IN [BRACKETS]	DR BY: RX	06-08-2010	DESCRIPTION MODEL-PFHP-48FR OUTLINE SIZE D DWG NO CB2034DRB SCALE NONE SHEET 1	
		APPD: MH	06-08-2010		EDS DATE 11-11-2011 FORMAT REV G
		THIRD ANGLE PROJECTION			CONFIDENTIAL: THIS DRAWING AND ITS INFORMATION ARE THE EXCLUSIVE AND CONFIDENTIAL PROPERTY OF REGAL-BELOIT CORPORATION AND ARE NOT TO BE DISCLOSED, DUPLICATED, DISTRIBUTED OR OTHERWISE USED WITHOUT THE WRITTEN CONSENT OF REGAL-BELOIT CORPORATION. -ALL RIGHTS RESERVED.

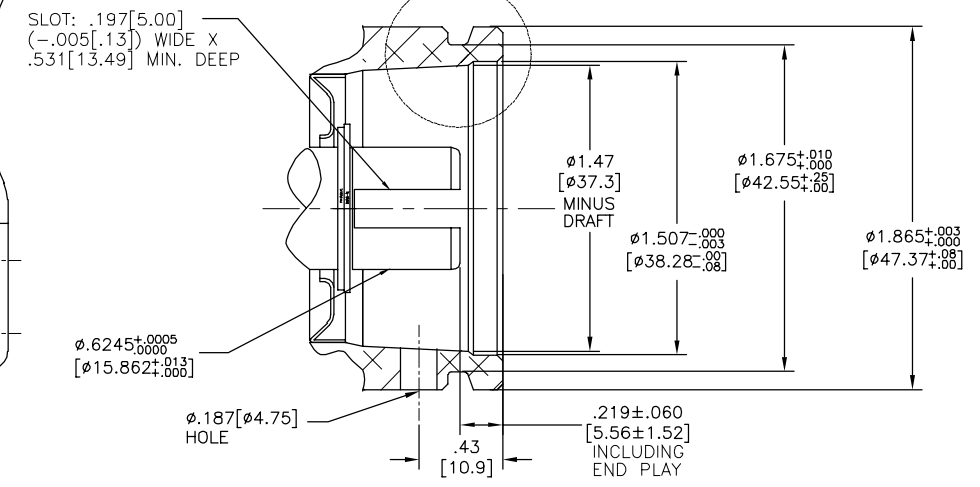
REVISION: ECO	REVISADO POR: R. JARAMILLO	FECHA: 04-17-2012	APROBADO POR: R. RASCON	FECHA: 04-17-2012
B	0025409			



SHAFT CONCENTRIC WITH $\phi 1.507$ [38.28] WITHIN .003 [.08] T.I.R. AND PERPENDICULAR WITH HUB FACE WITHIN .003 [.08] T.I.R.



BOTTOM VIEW OF BASE



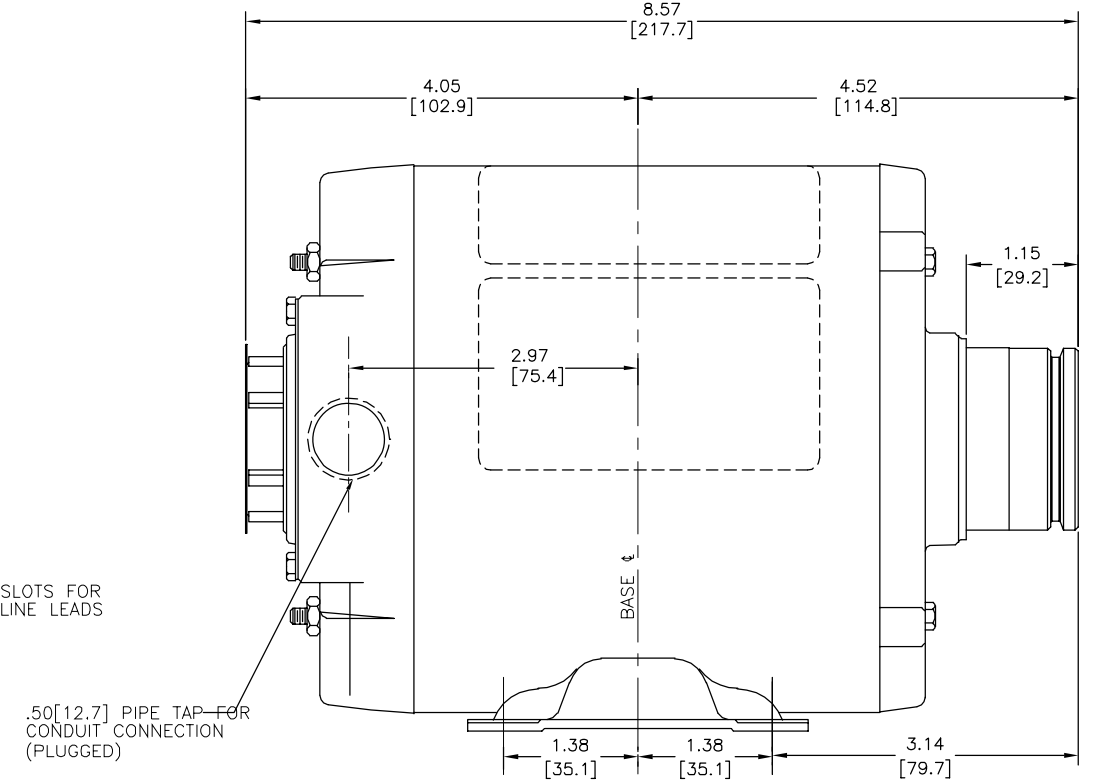
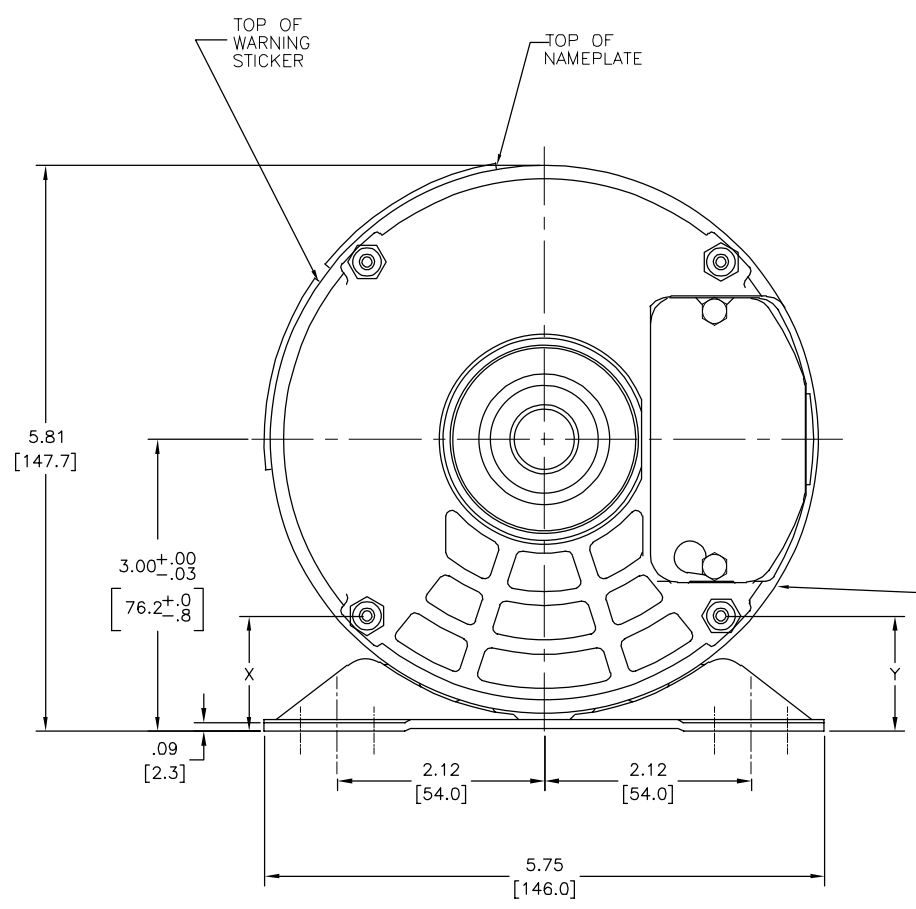
ENLARGED SECT. VIEW OF HUB

NOTE: THE BOTTOM THURBOLT EXTENSION TO BE PARALLEL TO PLANE OF FOOT WITHIN .090 (A-B=0.0±.090 AT THE NUT).

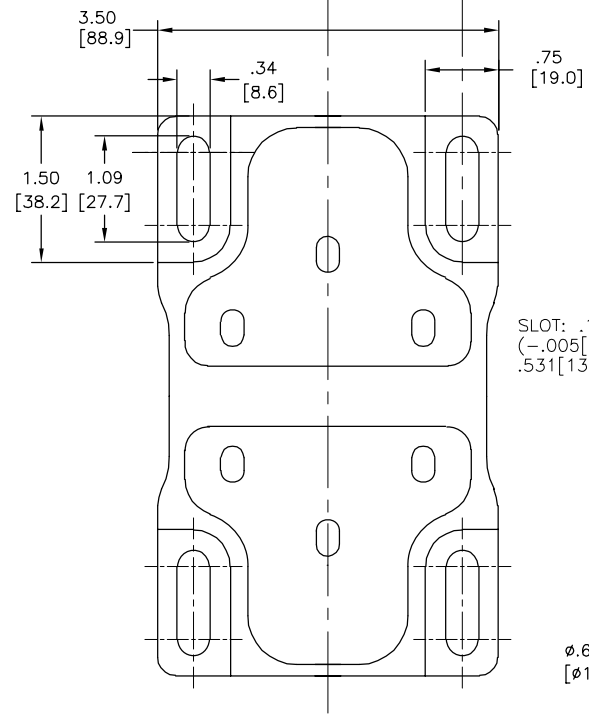
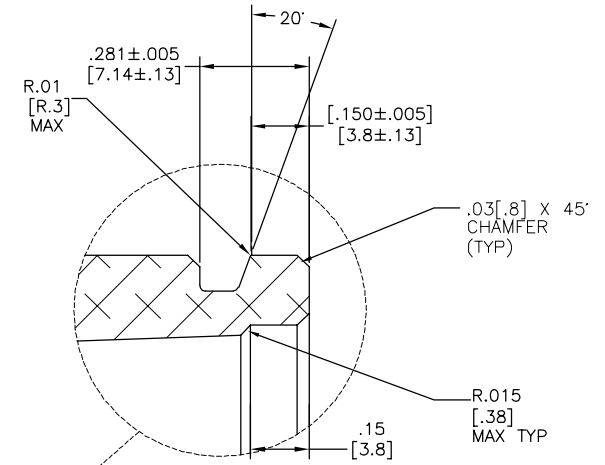
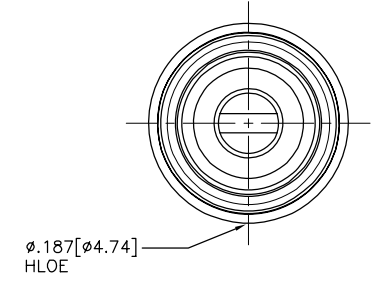
EL MOTOR DEBERA SER EMPACADO ANEXANDOSE EL CERTIFICADO DE CUMPLIMIENTO Y DEBERA LLEVAR EL NUMERO DE CODIGO EN CADA MOTOR.

CARACTERISTICAS DE GEOMETRIA Y SIMBOLOS: □ PLANICIDAD — RECTITUD ∠ ANGULARIDAD ⊥ PERPENDICULARIDAD (A ESCUADRA) // PARALELISMO ○ REDONDEZ (CIRCULARIDAD) R CILINDRICIDAD ≡ PERFIL DE CUALQUIER SUPERFICIE ∇ PERFIL DE CUALQUIER LINEA ∇ VARIACION ⊕ POSICION REAL ⊙ CONCENTRICIDAD = SIMETRIA	A MENOS QUE SE ESPECIFIQUE DE OTRA MANERA, LAS TOLERANCIAS DE LAS DIMS; SON LAS SIGUIENTES: PULG ±.1 ±.02 ±.005 ±.0005 mm ±0.5 ±0.13 ±0.013 ANG. ±50 GRADOS ELIMINAR REBABAS Y ORILLAS FILOSAS DEL BORDE. PULG .003-.015 mm 0.1-0.4 FILETEAR ESQUINA: PULG .020 mm 0.5 MAQUINAR SUPERFICIES PULG 125 mm 3.2 DIMS METRICAS MOSTRADAS [PARENTESIS]	DIBUJADO POR: RX	06-08-2010	DESCRIPCION: MODEL-PFHP-48FR OUTLINE TAMANO: D NUMERO DE DIBUJO: CB2034ADRB ESCALA: NONE HOJA: 1
		APROBADO POR: MH	06-08-2010	
CONFIDENCIAL: ESTE DIBUJO Y SU INFORMACION SON PROPIEDAD DE USO EXCLUSIVO Y CONFIDENCIAL DE REGAL-BELOIT CORPORATION, Y NO DEBERAN SER REVELADOS, DUPLICADOS, DISTRIBUIDOS O USARSE DE OTRA MANERA SIN EL CONSENTIMIENTO ESCRITO DE REGAL-BELOIT CORPORATION. -TODOS LOS DERECHOS RESERVADOS.				

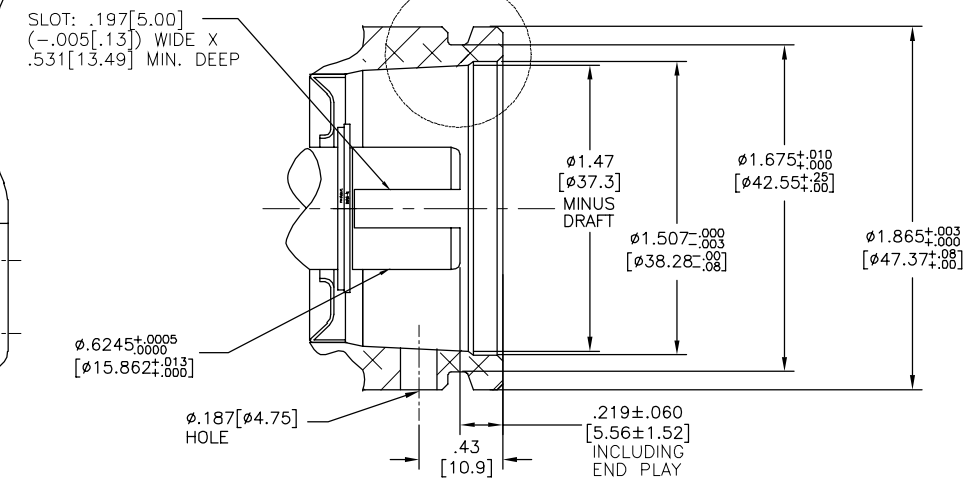
版本	ECO	编制	日期	批准	日期
B	0025409	R. JARAMILLO	04-17-2012	R. RASCON	04-17-2012



SHAFT CONCENTRIC WITH $\phi 1.507 [\phi 38.28]$ WITHIN $.003 [.08]$ T.I.R. AND PERPENDICULAR WITH HUB FACE WITHIN $.003 [.08]$ T.I.R.



BOTTOM VIEW OF BASE



ENLARGED SECT. VIEW OF HUB

NOTE: THE BOTTOM THRU BOLT EXTENSION TO BE PARALLEL TO PLANE OF FOOT WITHIN $.090$ (A-B=0.0±.090 AT THE NUT).

EL MOTOR DEBERA SER EMPACADO ANEXANDOSE EL CERTIFICADO DE CUMPLIMIENTO Y DEBERA LLEVAR EL NUMERO DE CODIGO EN CADA MOTOR.

形位公差	除另有注明
— 平面度	尺寸公差如下:
— 直线度	英寸 X XX XXX XXXX
— 倾斜度	英寸 ±.1 ±.02 ±.005 ±.0005
— 垂直度	毫米 ±0.5 ±0.13 ±0.013
— 平行度	清理毛刺和尖棱
— 圆度	英寸 .003-.015 毫米 0.1-0.4
— 圆柱度	内圆角
— 面轮廓度	英寸 .020 毫米 0.5
— 线轮廓度	表面粗糙度
— 圆跳动	英制 125 米制 3.2
— 位置度	米制尺寸显示在 []
— 同轴度	
— 对称度	

绘图:	RX	06-08-2010
批准:	MH	06-08-2010
第三角投影		图底格式发布日期 11-11-2011 图底格式版本 G
机密: 本图纸及相关信息所有权归REGAL-BELOIT CORPORATION. 未经REGAL-BELOIT CORPORATION书面授权, 不得泄露、复制、传播或作其他用途。—版权所有		

名称	MODEL-PFHP-48FR OUTLINE
图号	D
图号	CB2034DRB
比例	NONE
页号	1

REGAL-BELOIT CORPORATION