

4

3

2

1

REV	DATE	ECN	DESCRIPTION	REV BY	APPD
5	2000/10/11	OOM23429	REVERSED ORIENTATION OF THRU BOLTS	kevrow	

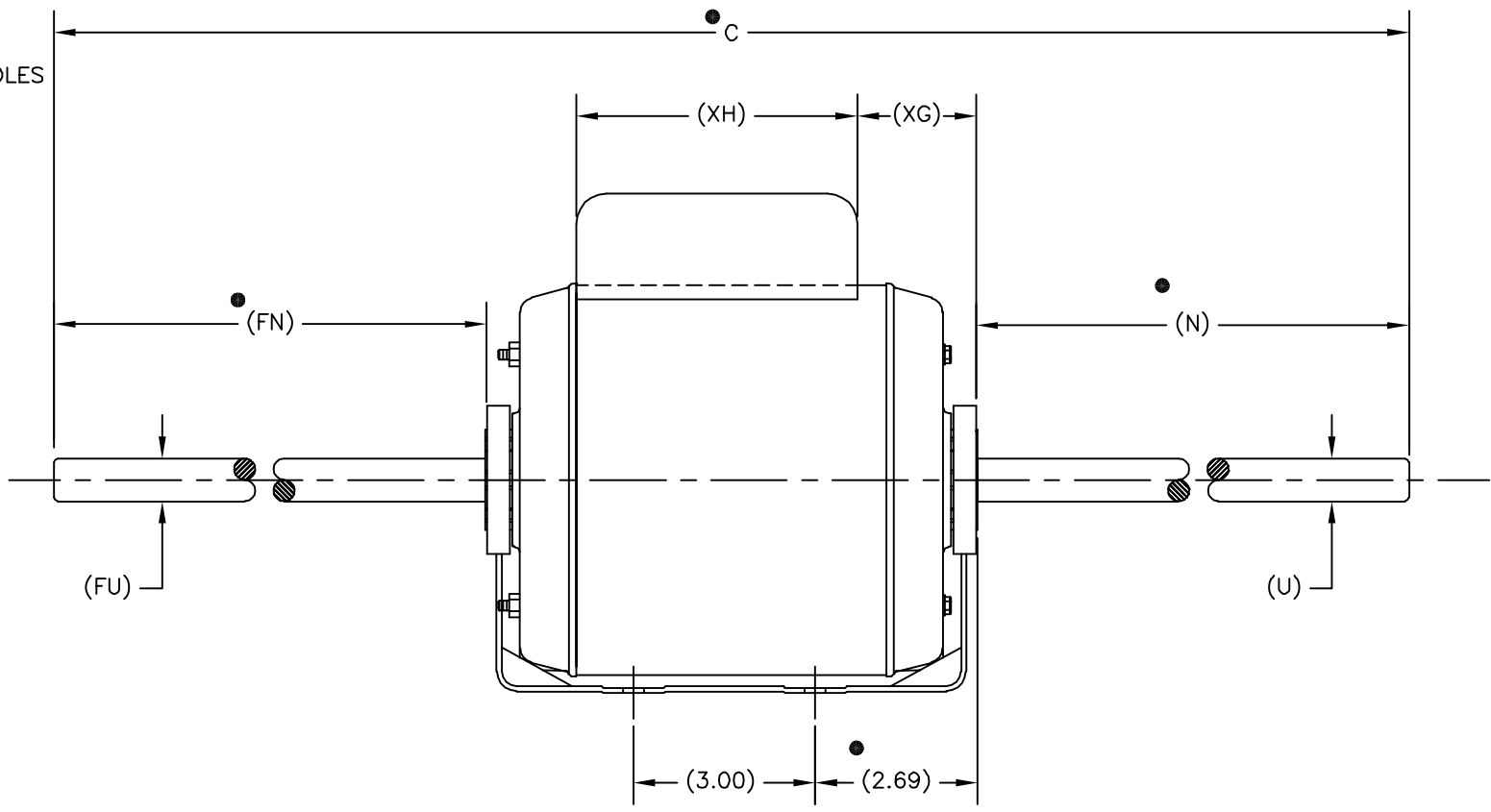
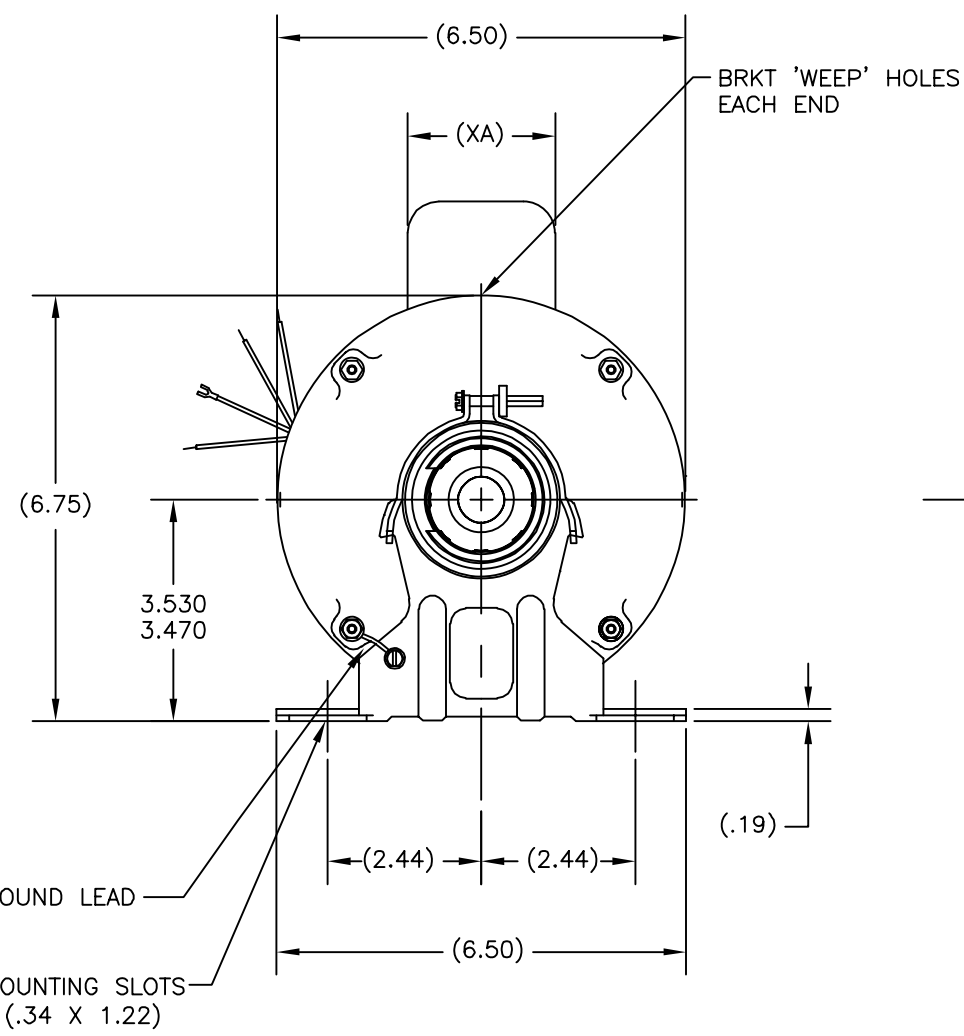
GROUP	TYPE	FRAME	C	FN	N	FU	U	XH	XG	XA	XN
-01	CX	J56Z	41.50	16.69	16.68	.7490/.7485	.7490/.7485	4.64	2.25	2.34	4.60
-02											
-03											

ALL DIMENSIONS SHOWN IN PARENTHESIS ARE REFERENCE DIMENSIONS. ALL OTHER DIMENSIONS ARE TOLERANCED PER THE FOLLOWING CHART UNLESS OTHERWISE SPECIFIED.

"C" DIM. = +/- .055  
 SHAFT EXT. = +/- .034  
 LEAD LENGTHS = +/- 1.00  
 EXTENDED THRU-BOLTS = +/- .050

D  
C  
B  
A

D  
C  
B  
A



● = CRITICAL DIM.

NOTES:  
 RUNOUT MUST NOT EXCEED .005 T.I.R. WHEN MEASURED 1.0 INCH FROM END OF SHAFT.  
 SHAFT AND BASE TO BE PARALLEL +/- .0625 WHEN MEASURED 1.0 INCH FROM END OF SHAFT.

AUTOCAD FORM 3	UNLESS OTHERWISE SPECIFIED DIM ARE IN INCHES .X = ± .1 .XX = ± .02 .XXX = ± .005 .XXXX = ± .0005 ANG = ± .5	DR BY: SVR 1996/10/16	1181 CORPORATE LAKE DRIVE ST. LOUIS, MISSOURI 63132	
	THE INFORMATION HEREON IS THE PROPERTY OF MAGNETEK INC. AND/OR ITS SUBSIDIARIES. WITHOUT WRITTEN PERMISSION, ANY COPYING, TRANSMITTAL TO OTHERS, AND ANY USE EXCEPT THAT FOR WHICH IT IS LOANED, IS PROHIBITED.	CK BY: SAS 1996/10/18		TITLE 0056 DWG O-LINE BB ENCL
		ISS:	SIZE C DWG NO 188293	REV 5
		THIRD ANGLE PROJECTION	SCALE 1=1 SHEET 1 OF 1	

4

3

2

1

4

3

2

1

REV	DATE	ECN	DESCRIPTION	REV BY	APPD
5	2000/10/11	OOM23429	REVERSED ORIENTATION OF THRU BOLTS	kevrow	

GROUP	TYPE	FRAME	C	FN	N	FU	U	XH	XG	XA	XN
-01	CX	J56Z	41.50	16.69	16.68	.7490/.7485	.7490/.7485	4.64	2.25	2.34	4.60
-02											
-03											

ALL DIMENSIONS SHOWN IN PARENTHESIS ARE REFERENCE DIMENSIONS. ALL OTHER DIMENSIONS ARE TOLERANCED PER THE FOLLOWING CHART UNLESS OTHERWISE SPECIFIED.

"C" DIM. = +/- .055  
 SHAFT EXT. = +/- .034  
 LEAD LENGTHS = +/- 1.00  
 EXTENDED THRU-BOLTS = +/- .050

D

D

C

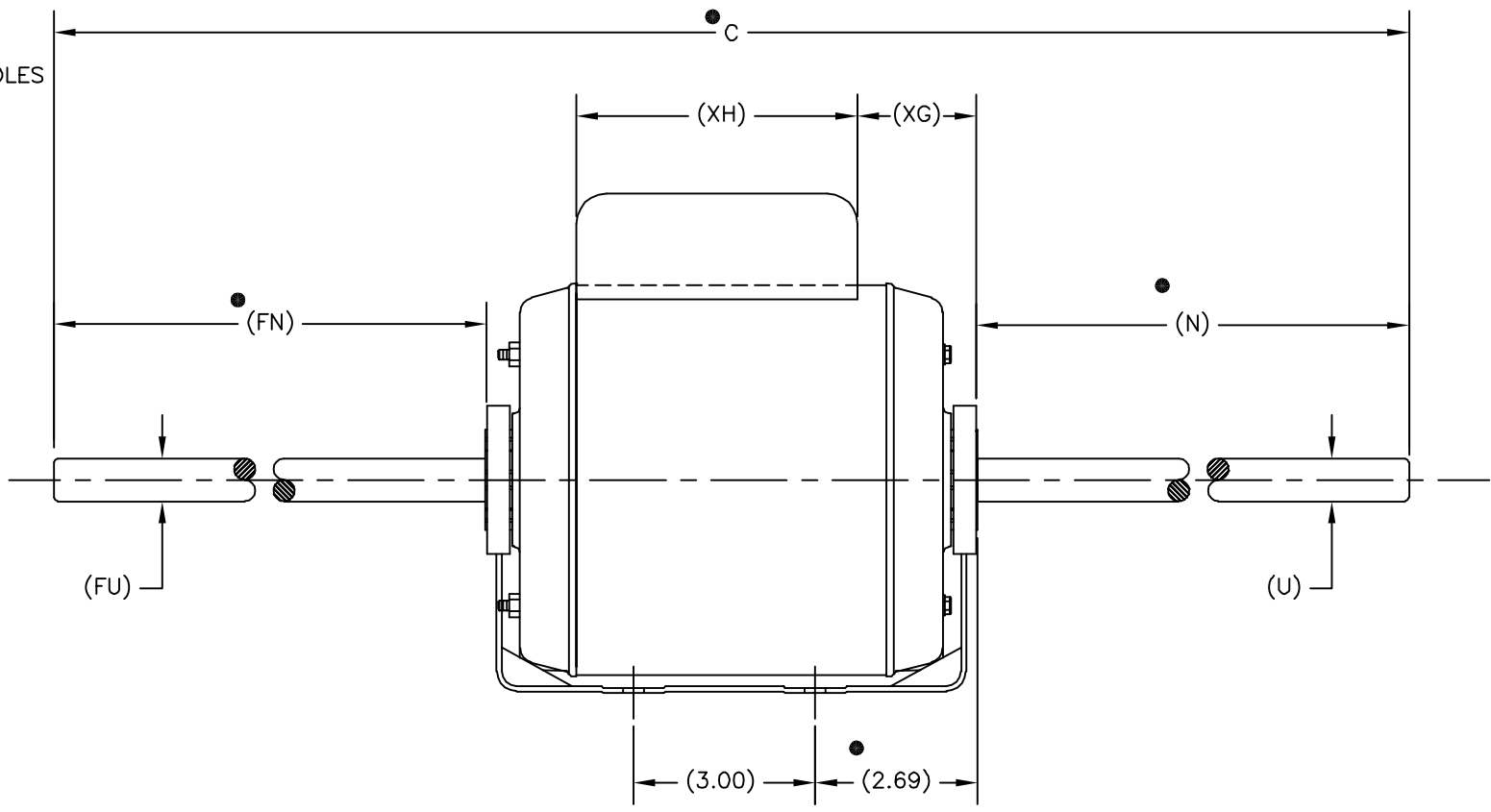
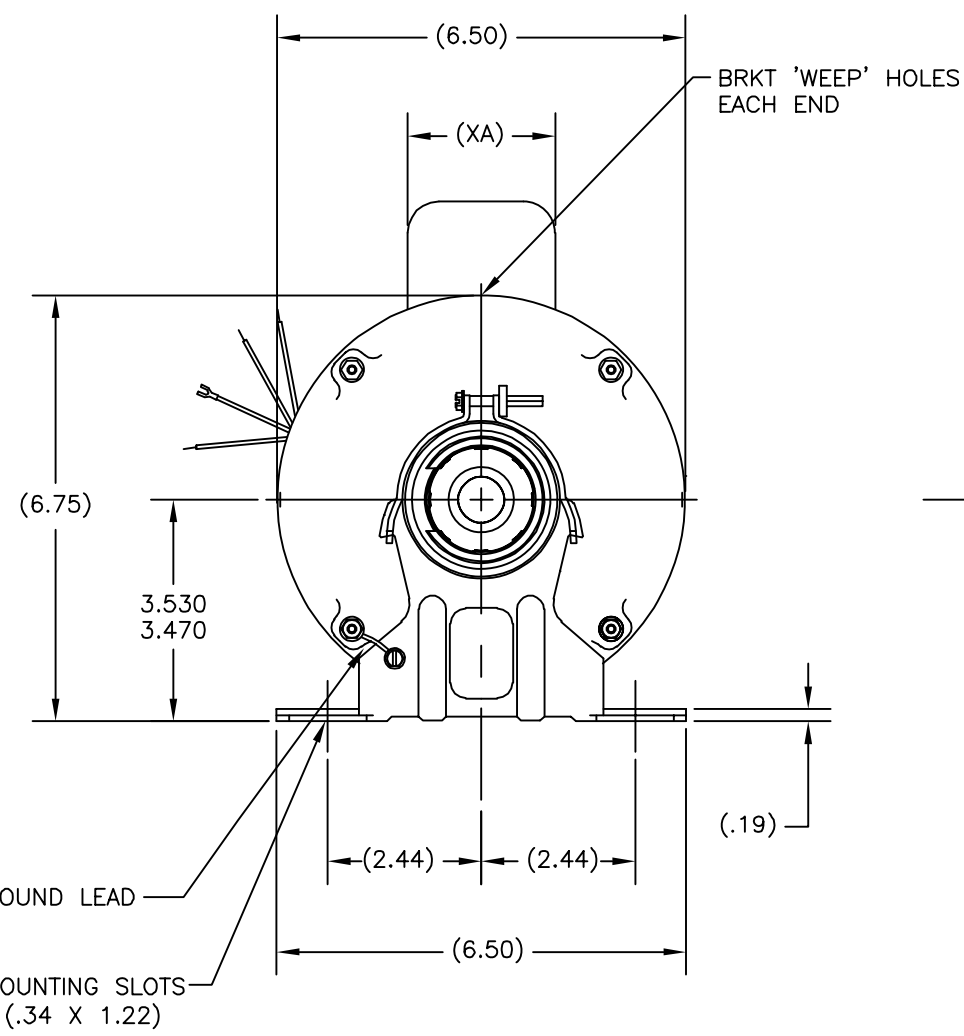
C

B

B

A

A



● = CRITICAL DIM.

NOTES:  
 RUNOUT MUST NOT EXCEED .005 T.I.R. WHEN MEASURED 1.0 INCH FROM END OF SHAFT.  
 SHAFT AND BASE TO BE PARALLEL +/- .0625 WHEN MEASURED 1.0 INCH FROM END OF SHAFT.

AUTOCAD FORM 3	UNLESS OTHERWISE SPECIFIED DIM ARE IN INCHES .X = ± .1 .XX = ± .02 .XXX = ± .005 .XXXX = ± .0005 ANG = ± .5	DR BY: SVR 1996/10/16	1181 CORPORATE LAKE DRIVE ST. LOUIS, MISSOURI 63132	
	THE INFORMATION HEREON IS THE PROPERTY OF MAGNETEK INC. AND/OR ITS SUBSIDIARIES. WITHOUT WRITTEN PERMISSION, ANY COPYING, TRANSMITTAL TO OTHERS, AND ANY USE EXCEPT THAT FOR WHICH IT IS LOANED, IS PROHIBITED.	CK BY: SAS 1996/10/18		TITLE: 0056 DWG O-LINE BB ENCL
		ISS:	SIZE: C DWG NO: 188293	REV: 5
		THIRD ANGLE PROJECTION	SCALE: 1=1	SHEET 1 OF 1

4

3

2

1

4

3

2

1

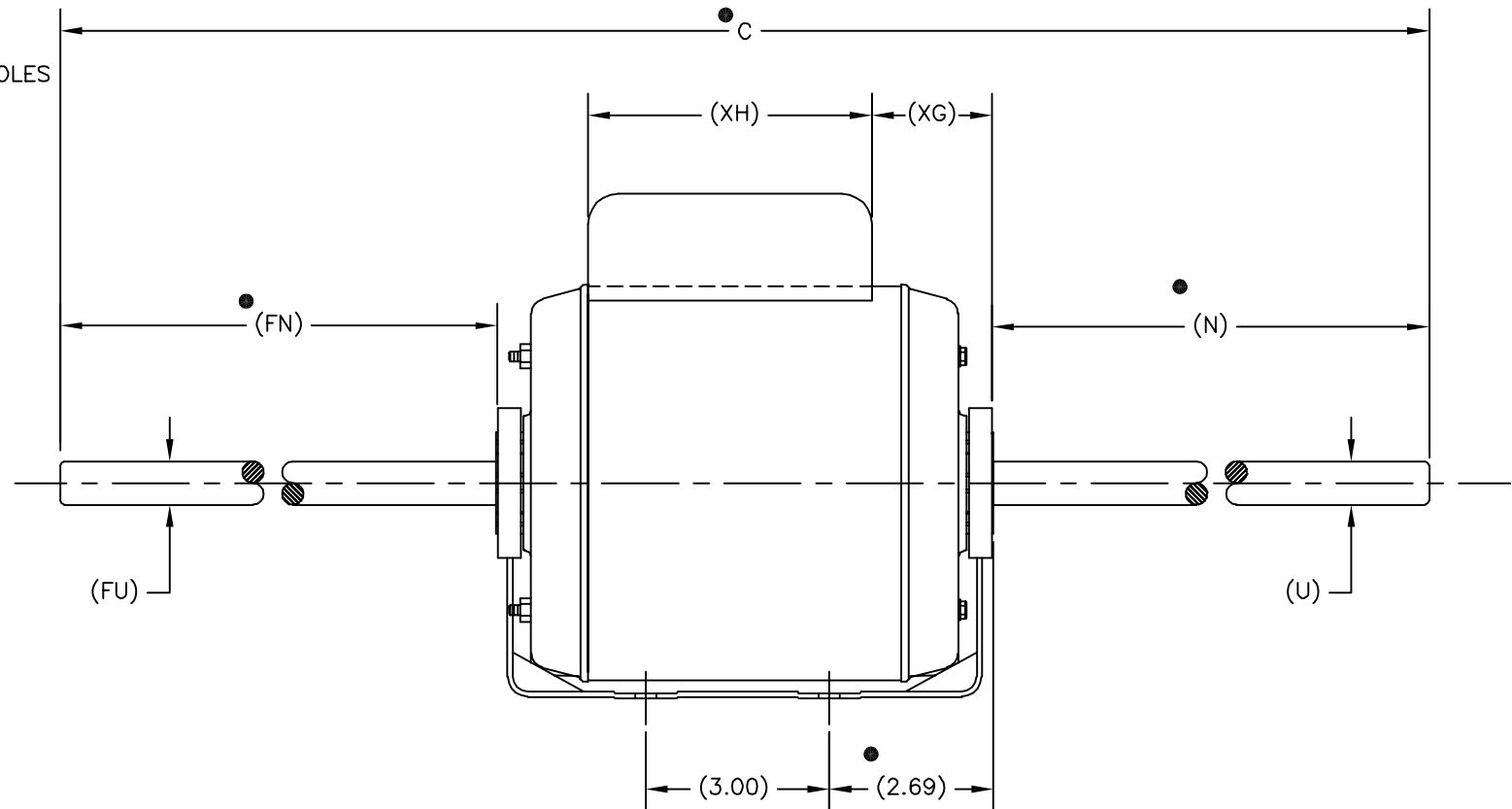
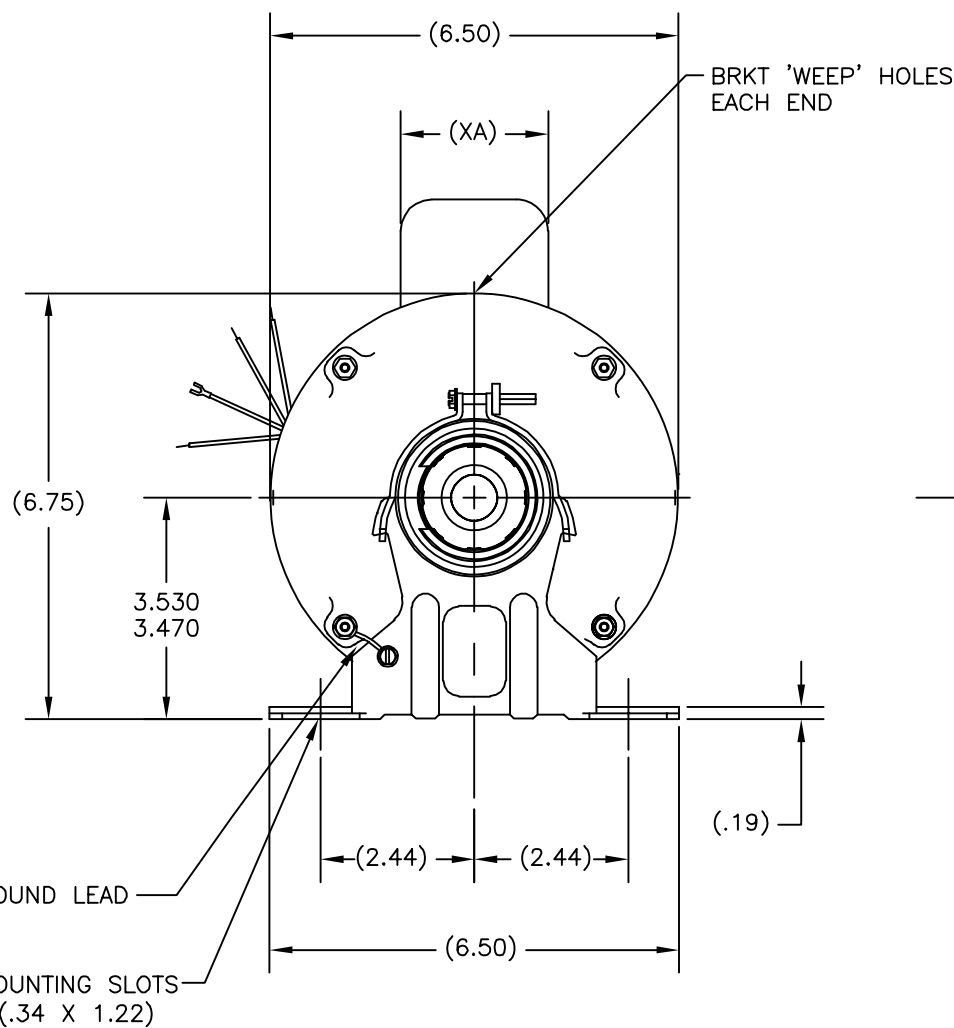
REV	DATE	ECN	DESCRIPTION	REV BY	APPD
5	2000/10/11	OOM23429	REVERSED ORIENTATION OF THRU BOLTS	kevrow	

GROUP	TYPE	FRAME	C	FN	N	FU	U	XH	XG	XA	XN
-01	CX	J56Z	41.50	16.69	16.68	.7490/.7485	.7490/.7485	4.64	2.25	2.34	4.60
-02											
-03											

ALL DIMENSIONS SHOWN IN PARENTHESIS ARE REFERENCE DIMENSIONS. ALL OTHER DIMENSIONS ARE TOLERANCED PER THE FOLLOWING CHART UNLESS OTHERWISE SPECIFIED.

"C" DIM. = +/- .055  
 SHAFT EXT. = +/- .034  
 LEAD LENGTHS = +/- 1.00  
 EXTENDED THRU-BOLTS = +/- .050



● = CRITICAL DIM.

NOTES:

- RUNOUT MUST NOT EXCEED .005 T.I.R. WHEN MEASURED 1.0 INCH FROM END OF SHAFT.
- SHAFT AND BASE TO BE PARALLEL +/- .0625 WHEN MEASURED 1.0 INCH FROM END OF SHAFT.

AUTOCAD FORM 3	UNLESS OTHERWISE SPECIFIED DIM ARE IN INCHES .X = ± .1 .XX = ± .02 .XXX = ± .005 .XXXX = ± .0005 ANG = ± .5	DR BY: SVR 1996/10/16	1181 CORPORATE LAKE DRIVE ST. LOUIS, MISSOURI 63132	
	THE INFORMATION HEREON IS THE PROPERTY OF MAGNETEK INC. AND/OR ITS SUBSIDIARIES. WITHOUT WRITTEN PERMISSION, ANY COPYING, TRANSMITTAL TO OTHERS, AND ANY USE EXCEPT THAT FOR WHICH IT IS LOANED, IS PROHIBITED.	CK BY: SAS 1996/10/18		TITLE 0056 DWG O-LINE BB ENCL
		ISS:	SIZE C DWG NO 188293	REV 5
		THIRD ANGLE PROJECTION	SCALE 1=1	SHEET 1 OF 1

4

3

2

1