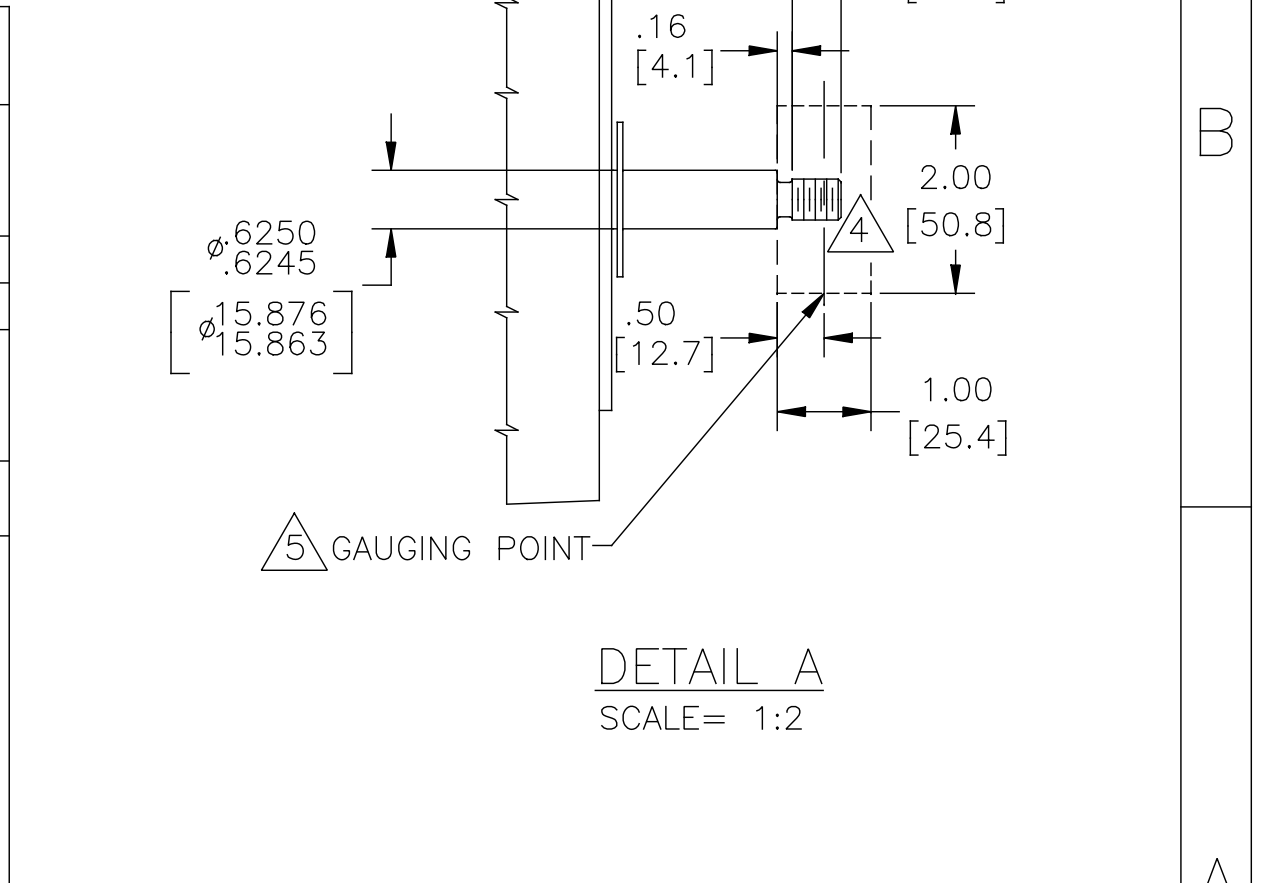


NAMEPLATE DATA	EXTERNAL CONNECTION DIAGRAM	PERFORMANCE CURVE NO.	APPROVED SAMPLE OR REF. MODEL									
MODEL: 184768 CUST. P/N: H607 HP: 1.5 SF: 1.30 ROT: RCW RPM: 3450/2850 TYPE: SC CODE: L FRAME: M 56 J VOLTS: 208-230/460 AMPS: 5.3-5.6/2.8 MAX AMPS: PH: 3 HZ: 60/50 INS: B AMB: 40°C DUTY: CONT	<table border="1"> <thead> <tr> <th>LOW VOLTAGE</th> <th>TO REVERSE, INTER-CHANGE ANY TWO LINE LEADS.</th> <th>HIGH VOLTAGE</th> </tr> </thead> <tbody> <tr> <td> 4-BROWN 5-ORANGE 6-BLACK 1-RED 7-PURPLE 2-WHITE 8-GRAY 3-BLUE 9-PINK </td> <td> LINE 1 LINE 2 LINE 3 </td> <td> 4-BROWN 7-PURPLE 5-ORANGE 8-GRAY 6-BLACK 9-PINK 1-RED 2-WHITE 3-BLUE </td> </tr> <tr> <td></td> <td></td> <td> LINE 1 LINE 2 LINE 3 </td> </tr> </tbody> </table>	LOW VOLTAGE	TO REVERSE, INTER-CHANGE ANY TWO LINE LEADS.	HIGH VOLTAGE	4-BROWN 5-ORANGE 6-BLACK 1-RED 7-PURPLE 2-WHITE 8-GRAY 3-BLUE 9-PINK	LINE 1 LINE 2 LINE 3	4-BROWN 7-PURPLE 5-ORANGE 8-GRAY 6-BLACK 9-PINK 1-RED 2-WHITE 3-BLUE			LINE 1 LINE 2 LINE 3	18080421	CSA
LOW VOLTAGE	TO REVERSE, INTER-CHANGE ANY TWO LINE LEADS.	HIGH VOLTAGE										
4-BROWN 5-ORANGE 6-BLACK 1-RED 7-PURPLE 2-WHITE 8-GRAY 3-BLUE 9-PINK	LINE 1 LINE 2 LINE 3	4-BROWN 7-PURPLE 5-ORANGE 8-GRAY 6-BLACK 9-PINK 1-RED 2-WHITE 3-BLUE										
		LINE 1 LINE 2 LINE 3										
		UL COMPONENT FILE#	CCN#									
		E44549	PRGY2									
		ENCLOSURE: ODP	CUSTOMER: DISTRIBUTION									



NOTES: 1. PILOT DIAMETER IS CONCENTRIC WITH SHAFT CENTERLINE WITHIN .004 T.I.R. 2. FACE OF MOUNTING FLANGE IS PERPENDICULAR TO SHAFT CENTERLINE WITHIN .004 T.I.R. 3. SHAFT RUNOUT NOT TO EXCEED .002 T.I.R. 4. FOR THREADED SHAFT EXT. MATING PARTS SHOULD BE RELIEVED ONE THREAD TO CLEAR FILLET.		5. FOR THREADER SHAFT EXT. ECCENTRICITY OF THREADED PORTION OF SHAFT IS HELD WITHIN .004 TOTAL GAGE READING WITH THE INDICATOR ON O.D. OF GROUND RING AS SHOWN. THE GAGE BEING STATIONARY WITH RESPECT TO THE ROTOR. 6. END PLAY NOT TO EXCEED .010 MEASURED WITH NO THRUST 7. ALL DIMENSIONS SHOWN IN PARENTHESIS ARE REFERENCE DIMENSIONS.	
DRAWING REVISION ECO-0097387 SEE ECO	REVISION BY A.BAUGHMAN APPROVED BY A.BAUGHMAN	DATE 04-20-2016 DATE 04-20-2016	TOLERANCES UNLESS OTHERWISE SPECIFIED DEC. INCH mm ANGLE .XX ±0.02 [±0.51] ±0.5° .XXX ±0.005 [±0.127] .XXXX ±0.0005 [±0.0127] REMOVE BURRS & BREAK SHARP EDGES .003/.015 [0.076/.381] CORNER FILLETS .02 [.51] MACHINED SURFACES 125/3.2 INCH/mm mm SHOWN IN [BRACKETS]
DRAWN BY: KHR DATE: 09-08-2012 APPROVED BY: DATE:		REGAL™ Regal Beloit America, Inc. DESCRIPTION MODEL-CFHP-56FR OUTLINE MATERIAL PROCESS/FINISH	
REFERENCE THIRD ANGLE PROJECTION		SIZE DWG NO C 12687-006	SHEET 1