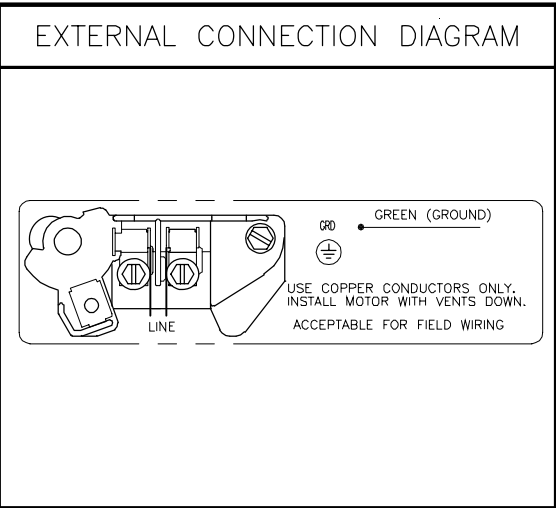
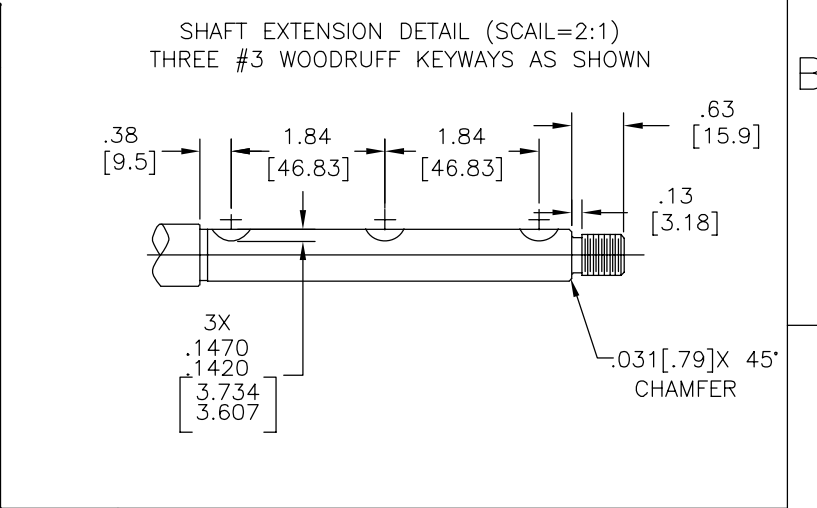


REV	ECO	REV BY	DATE	APPD	DATE
C	0035485	J.AGUILERA	09-23-2013	D.BALDERRAMA	09-23-2013

NAMEPLATE DATA	
MODEL: C48M2FC4A2	
CUST PN: R1152ES	
HP: 1/2	SF: 1.47
ROT: CCWPE	
RPM: 3450	
TYPE: T	CODE: L
FORM:	FRAME: 48Y
VOLTS: 230	
AMPS:	
MAX AMPS: 12.0	
SF AMPS: -	
PH: 1	HZ: 60
INS: B	AMB: 40
DUTY: CONT.	
ENCLOSURE: ODP	
THERMALLY PROTECTED	



- NOTES
1. FINISH PAINT TO BE SATIN BLACK.
  2. .44[11.1] WRENCH FLATS ON SHAFT FOR ACCESS TO THIS WRENCH FLAT REMOVE END COVER.
  3. STAINLESS STEEL SHAFT EXT.
  4. LIMITS ON AMPLITUDE OF VIBRATION MEASURED AT BEARING HOUSING=.001[.03]
  5. MOTOR ASSEMBLY REF:624650-003



PERFORMANCE CURVE	APPROVED SAMPLE		
C48M2W4			
UL COMPONENT	CSA		
FILE#	CCN#	FILE#	GUIDE#
E25022	XEWR2	LR43341	4211-01
CUSTOMER	DISTRIBUTION SERVICES		

GEOMETRIC CHARACTERISTICS & SYMBOLS

- FLATNESS
- STRAIGHTNESS
- ∠ ANGULARITY
- ⊥ PERPENDICULARITY (SQUARENESS)
- // PARALLELISM
- ROUNDNESS (CIRCULARITY)
- ∅ CYLINDRICITY
- △ PROFILE OF ANY SURFACE
- ∩ PROFILE OF ANY LINE
- ∞ RUNOUT
- ⊕ TRUE POSITION
- ◎ CONCENTRICITY
- ≡ SYMMETRY

ASME Y14.5M 1994

UNLESS OTHERWISE SPECIFIED DIM. TOLERANCES ARE AS FOLLOWS:

INCH X XX XXX XXXX  
 ±.1 ±.02 ±.005 ±.0005  
 mm ±0.5 ±0.13 ±0.013

ANG. ±50 DEG  
 REMOVE BURRS & BREAK SHARP EDGES:  
 INCH .003-.015 mm 0.1-0.4

CORNER FILLETS TO:  
 INCH .020 mm 0.5

MACHINE SURFACES:  
 INCH 125 mm 3.2

METRIC DIMS. SHOWN IN [BRACKETS]

DR BY:	DZ	10-15-2010
APPD:	BS	10-15-2010
THIRD ANGLE PROJECTION	EDS DATE	11-11-2011
	FORMAT	REV H
CONFIDENTIAL: THIS DRAWING AND ITS INFORMATION ARE THE EXCLUSIVE AND CONFIDENTIAL PROPERTY OF REGAL-BELOIT CORPORATION AND ARE NOT TO BE DISCLOSED, DUPLICATED, DISTRIBUTED OR OTHERWISE USED WITHOUT THE WRITTEN CONSENT OF REGAL-BELOIT CORPORATION. -ALL RIGHTS RESERVED.		

<b>REGAL</b> REGAL-BELOIT CORPORATION	
DESCRIPTION	
OUTLINE MODEL-PFHP-48FR	
SIZE	DWG NO
C	R1152ES
SCALE	SHEET
NONE	1

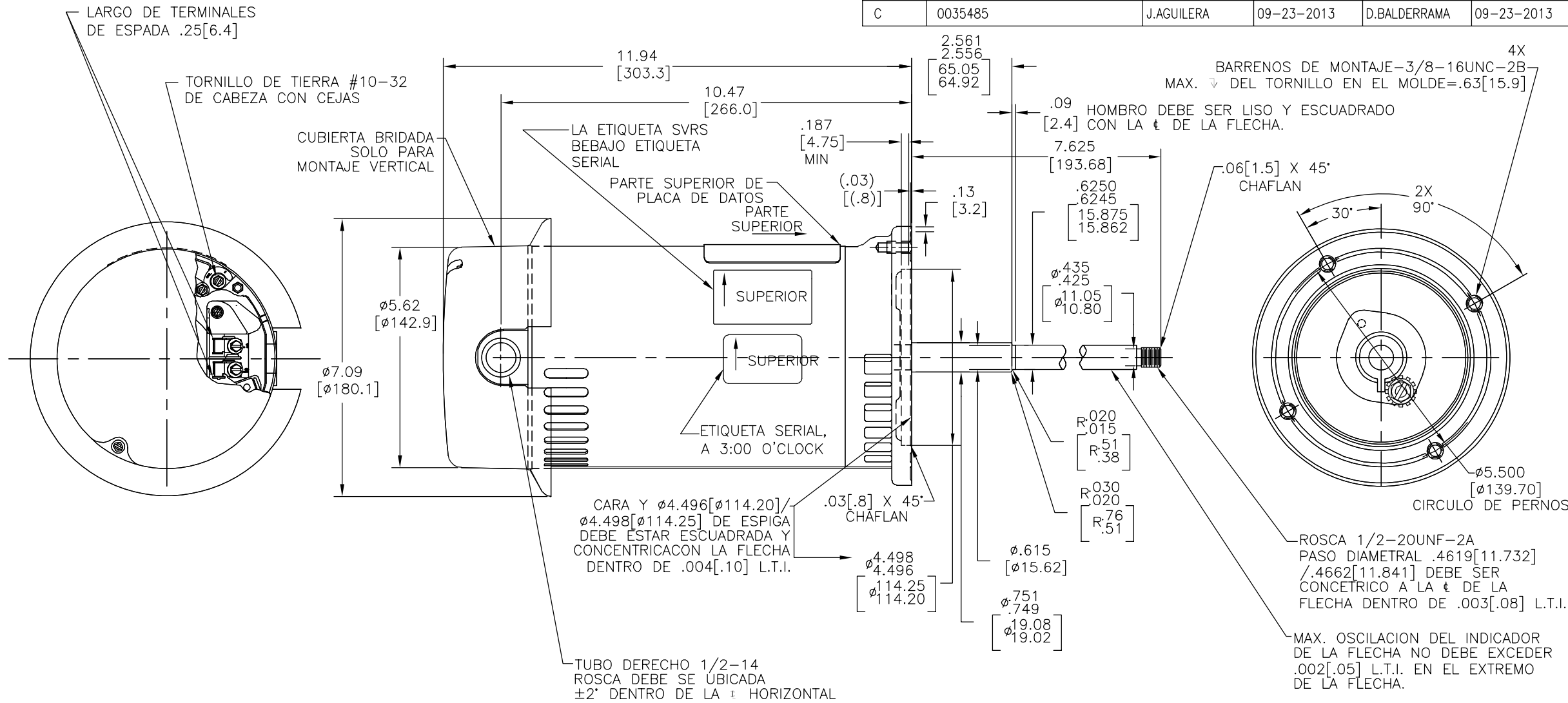
4

3

2

1

REVISION:	ECO	REVISADO POR:	FECHA:	APROBADO POR:	FECHA:
C	0035485	J.AGUILERA	09-23-2013	D.BALDERRAMA	09-23-2013

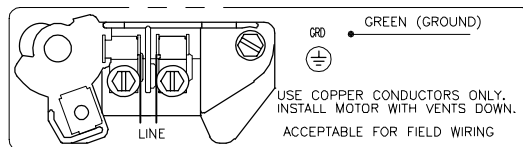


NAMEPLATE DATA

EXTERNAL CONNECTION DIAGRAM

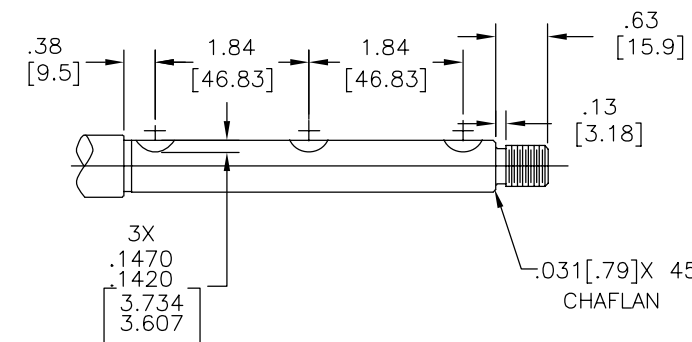
NOTES

MODEL: C48M2FC4A2  
 CUST PN: R1152ES  
 HP: 1/2 SF: 1.47  
 ROT: CCWPE  
 RPM: 3450  
 TYPE: T CODE: L  
 FORM: FRAME: 48Y  
 VOLTS: 230  
 AMPS:  
 MAX AMPS: 12.0  
 SF AMPS: -  
 PH: 1 HZ: 60  
 INS: B AMB: 40  
 DUTY: CONT.  
 ENCLOSURE: ODP  
 THERMALLY PROTECTED



1. PINTURA FINAL SERA NEGRO SATINADO.
2. .44[11.1] LLAVE PLANA SOBRE LA FLECHA PARA ACCESAR A ESTA LLAVE PLANA REMOVER LA CUBIERTA.
3. EXT. DE LA FLECHA DE ACERO INOXIDABLE.
4. LIMITES DE AMPLITUD DE VIBRACION MEDIDOS EN LA CAVIDAD DEL BALERO=.001[.03]
5. ENSAMBLE DE REFERENCIA DEL MOTOR: 624650-003

DETALLE DE LA EXTENSION DE LA FLECHA (ESCALA=2:1) TRES CUÑEROS WOODRUFF #3 COMO SE MUESTRA



PERFORMANCE CURVE

APPROVED SAMPLE

CARACTERISTICAS DE GEOMETRIA Y SIMBOLOS

A MENOS QUE SE ESPECIFIQUE DE OTRA MANERA, LAS TOLERANCIAS DE LAS DIMS; SON LAS SIGUIENTES:

DIBUJADO POR:

APROBADO POR:

TERCER ANGULO DE PROYECCION

CONFIDENCIAL: ESTE DIBUJO Y SU INFORMACION SON PROPIEDAD DE USO EXCLUSIVO Y CONFIDENCIAL DE REGAL-BELOIT CORPORATION. Y NO DEBERAN SER REVELADOS, DUPLICADOS, DISTRIBUIDOS O USARSE DE OTRA MANERA SIN EL CONSENTIMIENTO ESCRITO DE REGAL-BELOIT CORPORATION. -TODOS LOS DERECHOS RESERVADOS.



DESCRIPCION:

OUTLINE MODEL-PFHP-48FR

TAMAÑO:

C NUMERO DE DIBUJO: R1152ES

ESCALA:NONE

HOJA: 1

4

3

2

1