

GRP.	TYPE	FRAME	C	BS
-01	CS	K56CZ	11.68 [296.7]	5.37 [136.4]
-02	CS	L56CZ	11.30 [287.0]	5.00 [127.0]

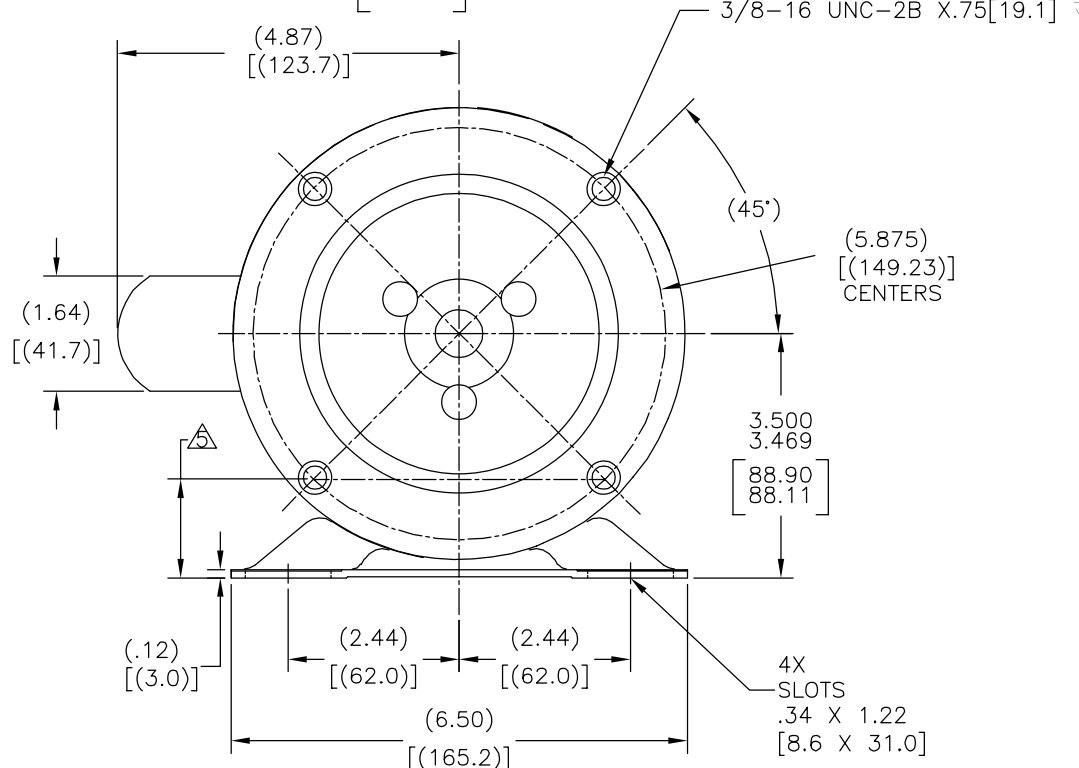
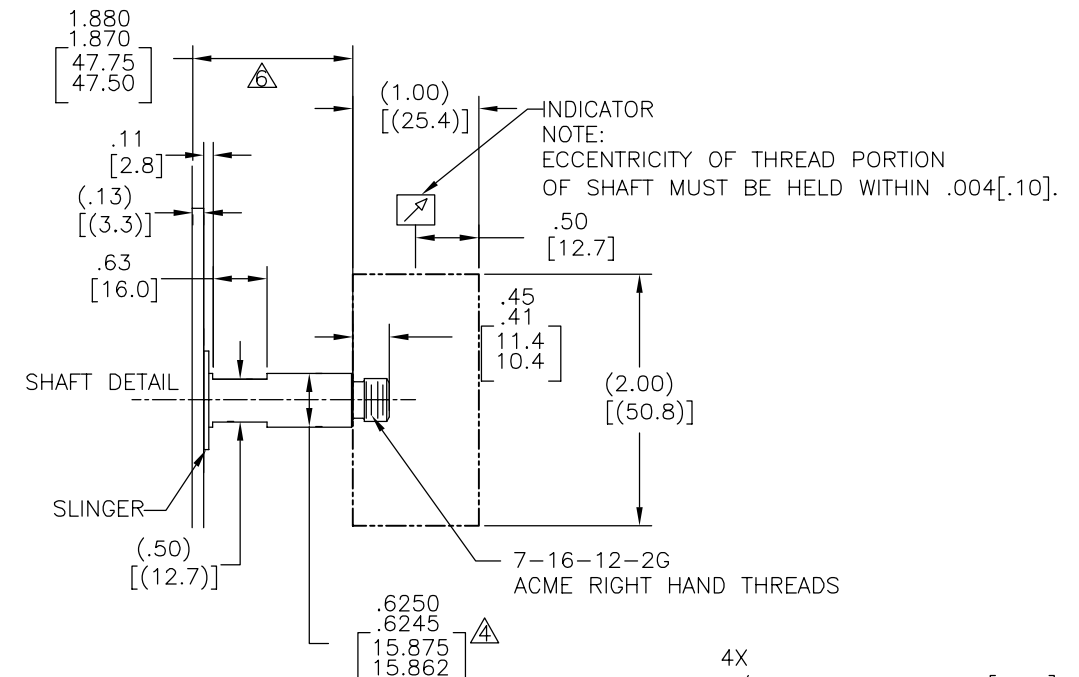
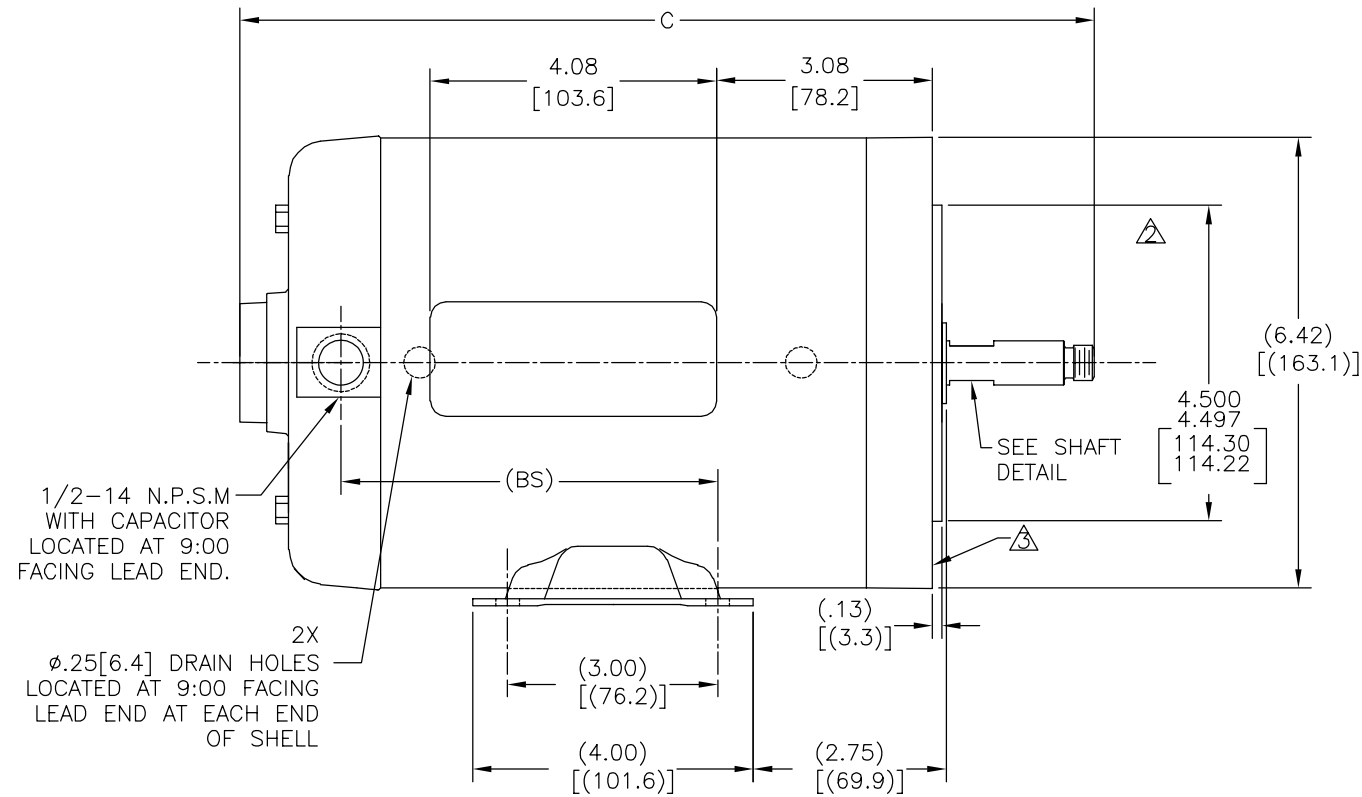
REV	ECO	REV BY	DATE	APPD	DATE
J	0025366	J.M.Ramirez	04-13-2012	R.Rascon	04-13-2012

NOTES:

1. ALL DIMENSIONS SHOWN IN PARENTHESIS ARE REFERENCE DIMENSION ALL OTHER DIMENSIONS ARE TOLERANCED PERO THE FOLLOWING CHART UNLESS OTHERWISE SPECIFIED.

"C" DIMENSION = ±.046[1.17]
 SHAFT EXTENSION = ± .034[.86]
 LEAD LENGTHS = ± 1.00[25.4]
 EXTENDED THRU BOLTS = ± .050[1.127]

- △ RABBET DIAMETER IS CONCENTRIC WITH SHAFT CENTERLINE WITHIN .004[.10] TIR.
- △ FACE OF MOUNTING FALANGE IS PERPENDICULAR TO SHAFT CENTERLINE WITHIN .004[.10] T.I.R.
- △ MAX. SHAFT RUN OUT= .0015[.038] T.I.R
- △ TWO BOTTOM HOLES ARE EQUIDISTANT FROM BOTTOM OF BASE WITHIN .030[.76].
- △ AFTER FINAL ASSEMBLY ø.625[15.87] SHAFT SHOULDER ADJACENT TO THREADS IS TO BE MACHINED SO THAT THE FACE OF THE CUSTOMER PILOT TO SHAFT IS 1.870/1.880[47.50/47.75]



GEOMETRIC CHARACTERISTICS & SYMBOLS

- ▭ FLATNESS
- STRAIGHTNESS
- ∠ ANGULARITY
- ⊥ PERPENDICULARITY (SQUARENESS)
- // PARALLELISM
- ROUNDNESS (CIRCULARITY)
- ⊘ CYLINDRICITY
- △ PROFILE OF ANY SURFACE
- ∧ PROFILE OF ANY LINE
- ↗ RUNOUT
- ⊕ TRUE POSITION
- ⊙ CONCENTRICITY
- = SYMMETRY

ASME Y14.5M 1994

UNLESS OTHERWISE SPECIFIED DIM. TOLERANCES ARE AS FOLLOWS:

INCH X XX XXX XXXX
 ±.1 ±.02 ±.005 ±.0005
 mm ±0.5 ±0.13 ±0.013

ANG. ±.50 DEG
 REMOVE BURRS & BREAK SHARP EDGES:
 INCH .003-.015 mm 0.1-0.4

CORNER FILLETS TO:
 INCH .020 mm 0.5

MACHINE SURFACES:
 INCH 125 mm 3.2

METRIC DIMS. SHOWN IN [BRACKETS]

DR BY:	D.Muñoz	04-28-2009
APPD:		
THIRD ANGLE PROJECTION	EDS DATE 11-11-2011	FORMAT REV G
CONFIDENTIAL: THIS DRAWING AND ITS INFORMATION ARE THE EXCLUSIVE AND CONFIDENTIAL PROPERTY OF REGAL-BELOIT CORPORATION AND ARE NOT TO BE DISCLOSED, DUPLICATED, DISTRIBUTED OR OTHERWISE USED WITHOUT THE WRITTEN CONSENT OF REGAL-BELOIT CORPORATION. -ALL RIGHTS RESERVED.		

REGAL-BELOIT CORPORATION	
DESCRIPTION MODEL-CFHP-56FR OUTLINE	
SIZE C	DWG NO 154855
SCALE NONE	SHEET 1

4

3

2

1

GRP.			C	BS
-01	CS	K56CZ	11.68 [296.7]	5.37 [136.4]
-02	CS	L56CZ	11.30 [287.0]	5.00 [127.0]

REVISION:	ECO	REVISADO POR:	FECHA:	APROBADO POR:	FECHA:
J	0025366	J.M.Ramirez	04-13-2012	R.Rascon	04-13-2012

D

D

C

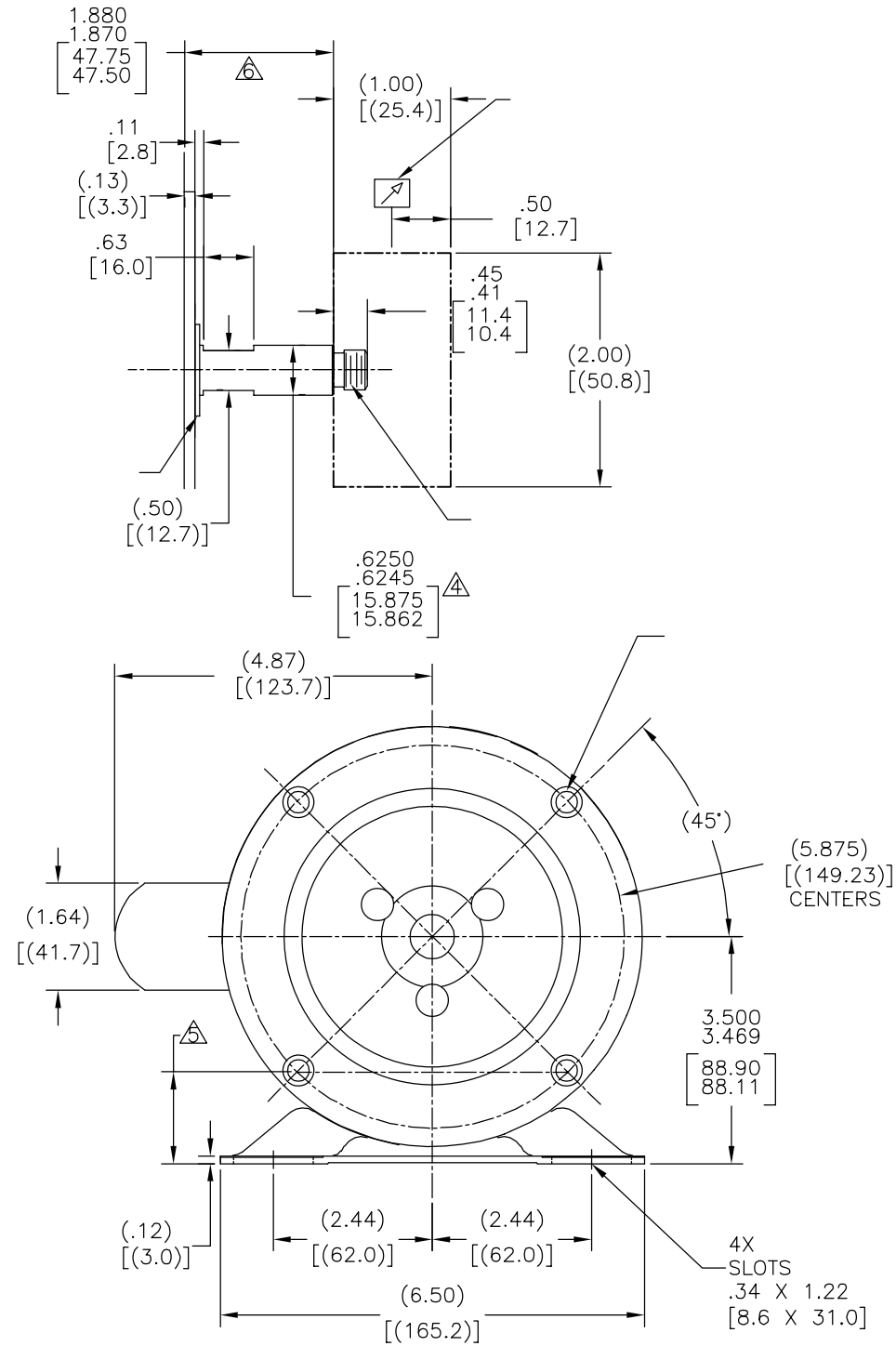
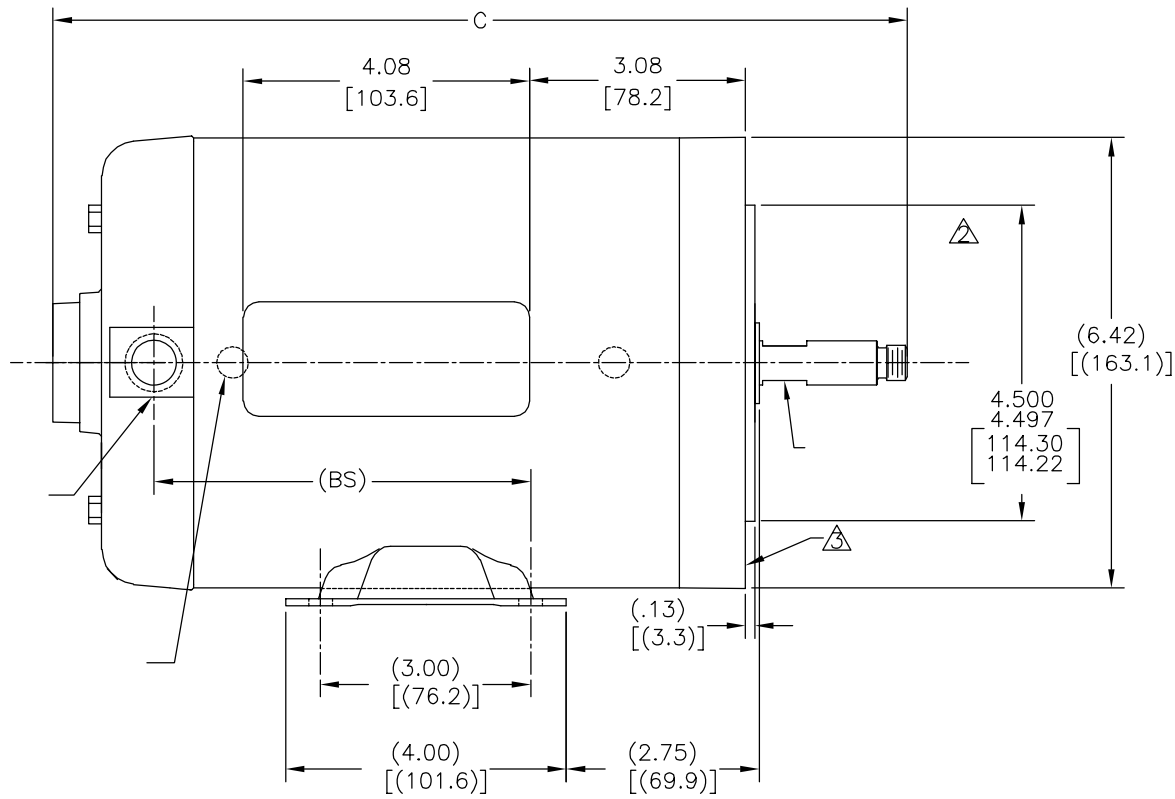
C

B

B

A

A



CARACTERISTICAS DE GEOMETRIA Y SIMBOLOS
 ▽ PLANICIDAD
 - RECTITUD
 < ANGULARIDAD
 ⊥ PERPENDICULARIDAD (A ESCUADRA)
 // PARALELISMO
 ○ REDONDEZ (CIRCULARIDAD)
 ∅ CILINDRICIDAD
 △ PERFIL DE CUALQUIER SUPERFICIE
 ▲ PERFIL DE CUALQUIER LINEA
 ↗ VARIACION
 ⊕ POSICION REAL
 ⊙ CONCENTRICIDAD
 = SIMETRIA
 ASME Y14.5M 1994

A MENOS QUE SE ESPECIFIQUE DE OTRA MANERA, LAS TOLERANCIAS DE LAS DIMS; SON LAS SIGUIENTES:
 PULG ±.1 ±.02 ±.005 ±.0005
 mm ±0.5 ±0.13 ±0.013
 ANG. ± 50 GRADOS
 ELIMINAR REBABAS Y ORILLAS FILOSAS DEL BORDE.
 PULG .003-.015 mm 0.1-0.4
 FILETEAR ESQUINA: PULG .020 mm 0.5
 MAQUINAR SUPERFICIES
 PULG 125 mm 3.2
 DIMS METRICAS MOSTRADAS [PARENTESIS]

DIBUJADO POR: D.Muñoz 04-28-2009
 APROBADO POR:
 TERCER ANGULO DE PROYECCION
 FECHA EDS: 11-11-2011
 REV. FORMATO: G
 CONFIDENCIAL: ESTE DIBUJO Y SU INFORMACION SON PROPIEDAD DE USO EXCLUSIVO Y CONFIDENCIAL DE REGAL-BELOIT CORPORATION. Y NO DEBERAN SER REVELADOS, DUPLICADOS, DISTRIBUIDOS O USARSE DE OTRA MANERA SIN EL CONSENTIMIENTO ESCRITO DE REGAL-BELOIT CORPORATION. -TODOS LOS DERECHOS RESERVADOS.

REGAL-BELOIT CORPORATION
 DESCRIPCION: MODEL-CFHP-56FR OUTLINE
 TAMAÑO: C NUMERO DE DIBUJO: 154855
 ESCALA: NONE HOJA: 1

4

3

2

1

4

3

2

1

GRP.			C	BS
-01	CS	K56CZ	11.68 [296.7]	5.37 [136.4]
-02	CS	L56CZ	11.30 [287.0]	5.00 [127.0]

版本	ECO	编制	日期	批准	日期
J	0025366	J.M.Ramirez	04-13-2012	R.Rascon	04-13-2012

D

D

C

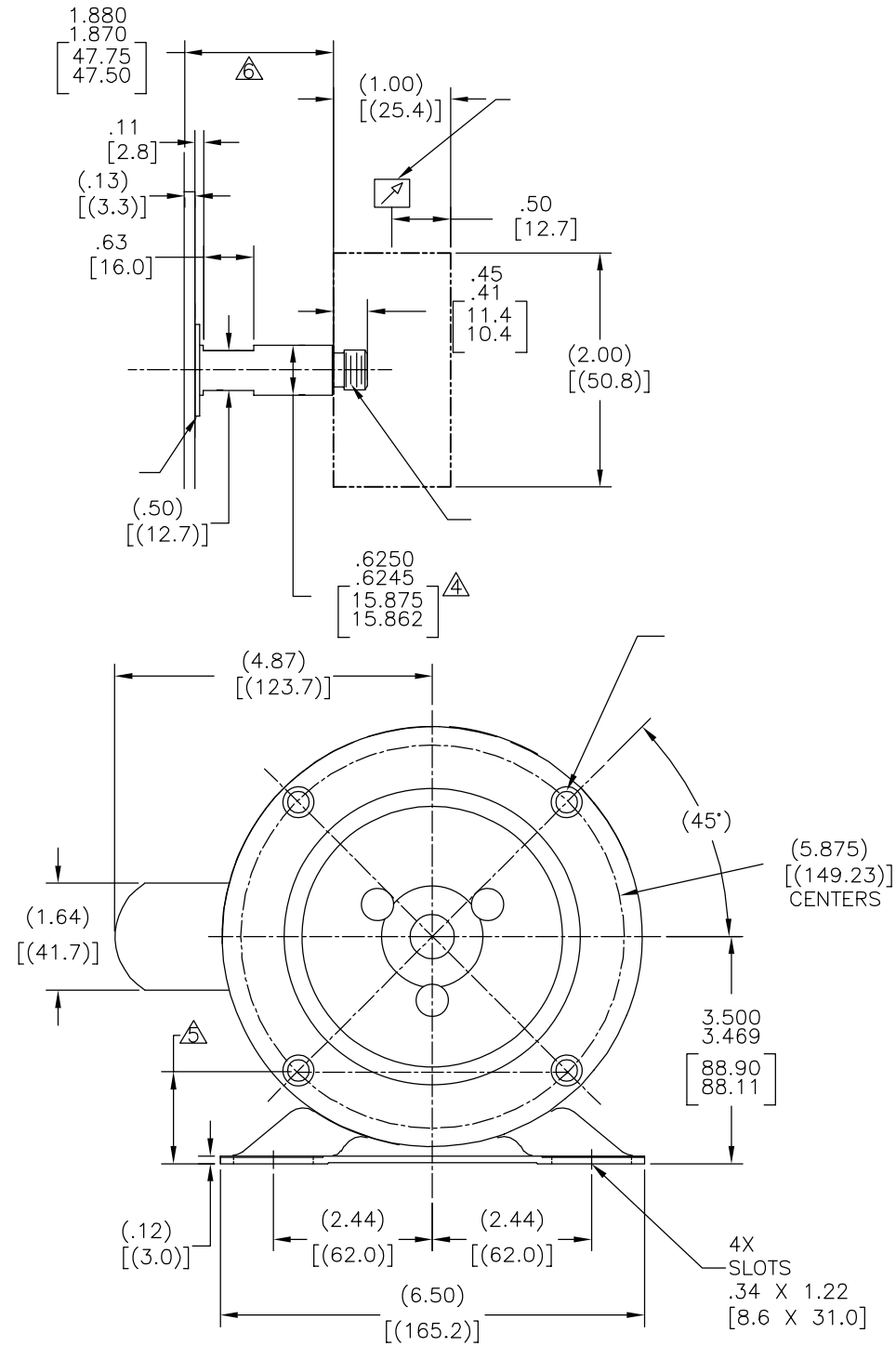
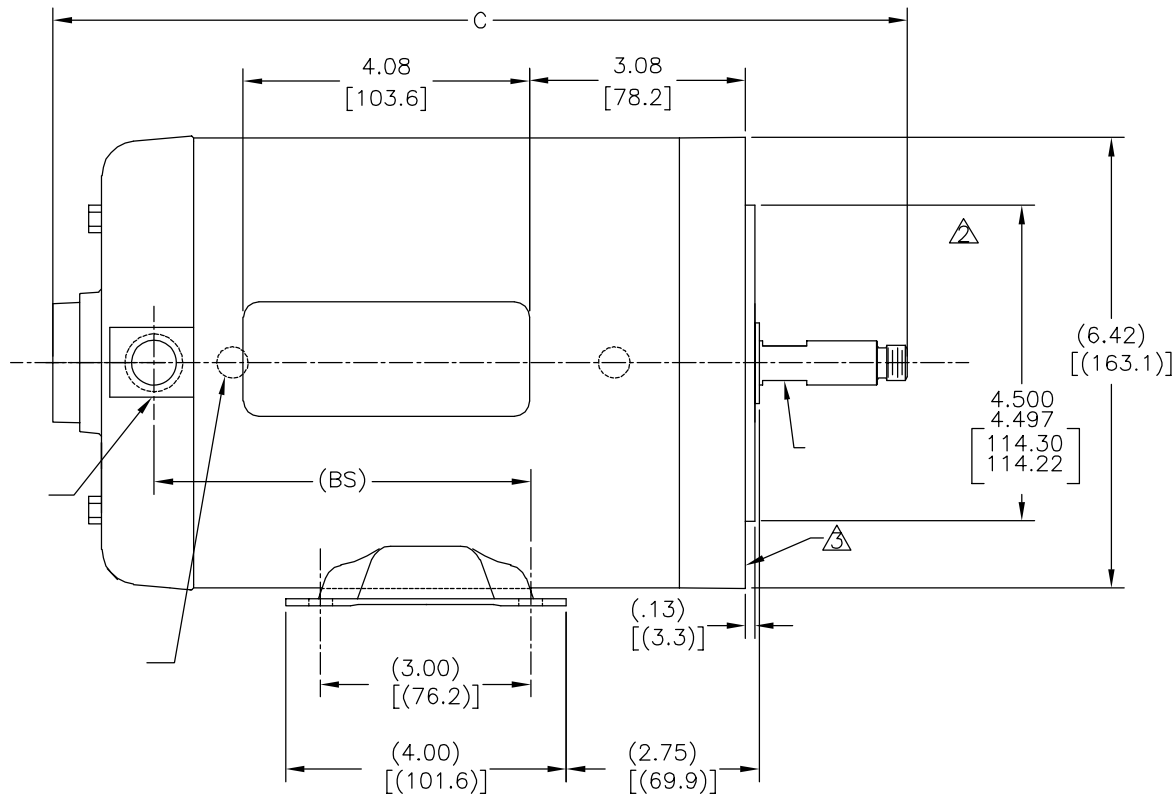
C

B

B

A

A



形位公差	除另有注明 尺寸公差如下:
□ 平面度	英寸 X XX XXX XXXX
— 直线度	英寸 ±.1 ±.02 ±.005 ±.0005
∠ 倾斜度	毫米 ±0.5 ±0.13 ±0.013
⊥ 垂直度	角度 ±.50 度
// 平行度	清理毛刺和尖棱
○ 圆度	英寸 .003-.015 毫米 0.1-0.4
⊙ 圆柱度	内圆角
⌒ 面轮廓度	英寸 .020 毫米 0.5
⌒ 线轮廓度	表面粗糙度
↗ 圆跳动	英制 125 米制 3.2
⊕ 位置度	米制尺寸显示在 []
⊙ 同轴度	
≡ 对称度	

ASME Y14.5M 1994

绘图:	D.Muñoz	04-28-2009
批准:		
第三角投影	⊕	图纸格式发布日期 11-11-2011 图纸格式版本 G
机密: 本图纸及相关信息所有权归REGAL-BELOIT CORPORATION 未经REGAL-BELOIT CORPORATION书面授权, 不得泄露、 复制、传播或作其他用途。—版权所有		

名称	
MODEL-CFHP-56FR OUTLINE	
图幅	图号
C	154855
比例	页号
NONE	1

4

3

2

1