

4

3

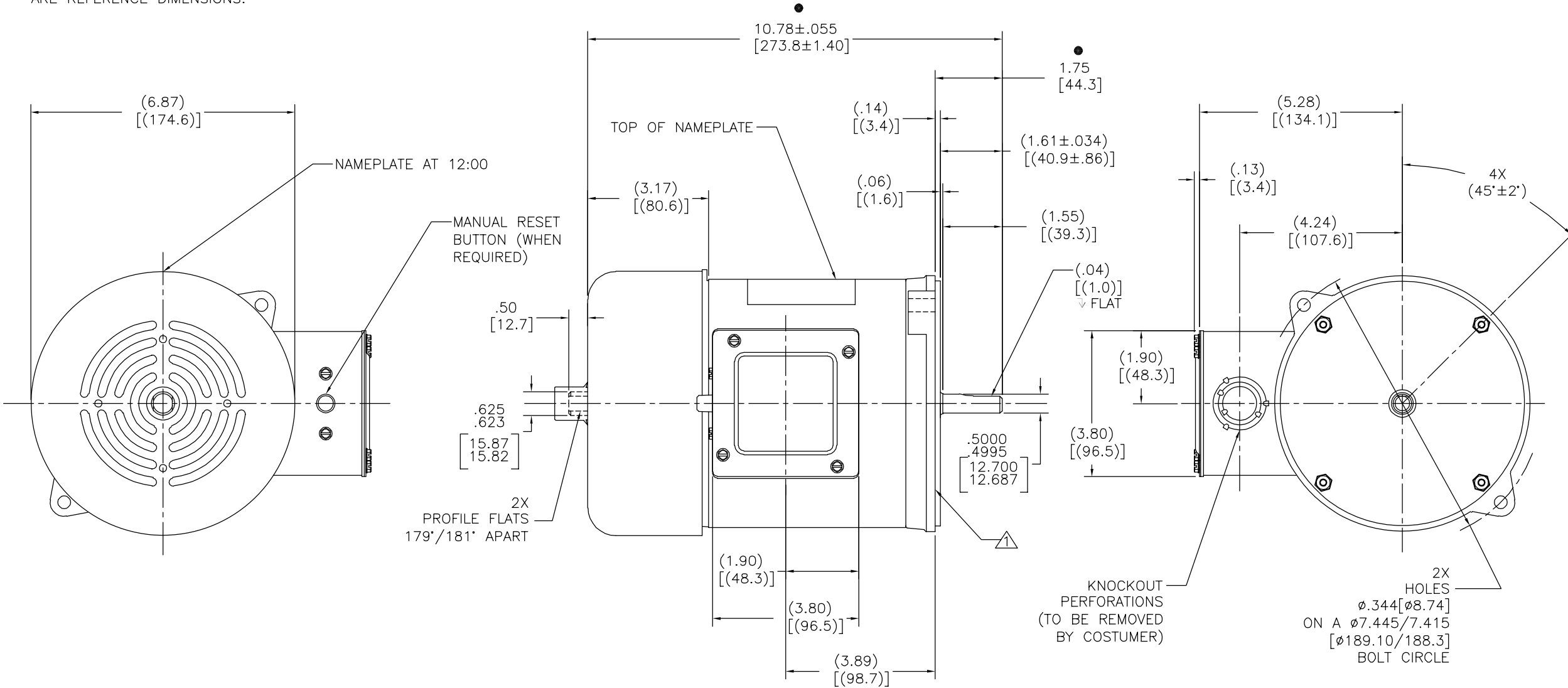
2

1

NOTES:

1. FACE OF MOUNTING FLANGE IS PERPENDICULAR TO SHAFT ± WITHIN .004[.10] T.I.R.
2. SHAFT RUNOUT NOT TO EXCEED .002[.05] T.I.R.
3. ALL DIMENSIONS SHOWN IN PARENTHESIS ARE REFERENCE DIMENSIONS.

REV	ECO	REV BY	DATE	APPD	DATE
C	0029710	E.SINECIO	12-13-2012	D.MUÑOZ	12-13-2012



● CRITICAL DIMENSION

GEOMETRIC CHARACTERISTICS & SYMBOLS	
▭	FLATNESS
—	STRAIGHTNESS
∠	ANGULARITY
⊥	PERPENDICULARITY (SQUARENESS)
//	PARALLELISM
○	ROUNDNESS (CIRCULARITY)
⊘	CYLINDRICITY
△	PROFILE OF ANY SURFACE
∧	PROFILE OF ANY LINE
↗	RUNOUT
⊕	TRUE POSITION
◎	CONCENTRICITY
≡	SYMMETRY
ASME Y14.5M 1994	

UNLESS OTHERWISE SPECIFIED DIM. TOLERANCES ARE AS FOLLOWS:			
INCH	XX	XXX	XXXX
mm	±0.5	±0.13	±0.013
ANG. ±.50 DEG			
REMOVE BURRS & BREAK SHARP EDGES:			
INCH	.003-.015	mm	0.1-0.4
CORNER FILLETS TO:			
INCH	.020	mm	0.5
MACHINE SURFACES:			
INCH	125	mm	3.2
METRIC DIMS. SHOWN IN [BRACKETS]			

DR BY:	A.NAJERA	04-26-2012
APPD:	S.WALLACE	04-26-2012
THIRD ANGLE PROJECTION	EDS DATE	11-11-2011
	FORMAT	REV H
CONFIDENTIAL: THIS DRAWING AND ITS INFORMATION ARE THE EXCLUSIVE AND CONFIDENTIAL PROPERTY OF REGAL-BELOIT CORPORATION AND ARE NOT TO BE DISCLOSED, DUPLICATED, DISTRIBUTED OR OTHERWISE USED WITHOUT THE WRITTEN CONSENT OF REGAL-BELOIT CORPORATION. -ALL RIGHTS RESERVED.		

REGAL REGAL-BELOIT CORPORATION	
DESCRIPTION	
MODEL-CFHP-56FR OUTLINE	
SIZE	DWG NO
C	C346
SCALE	SHEET
NONE	1

4

3

2

1

4

3

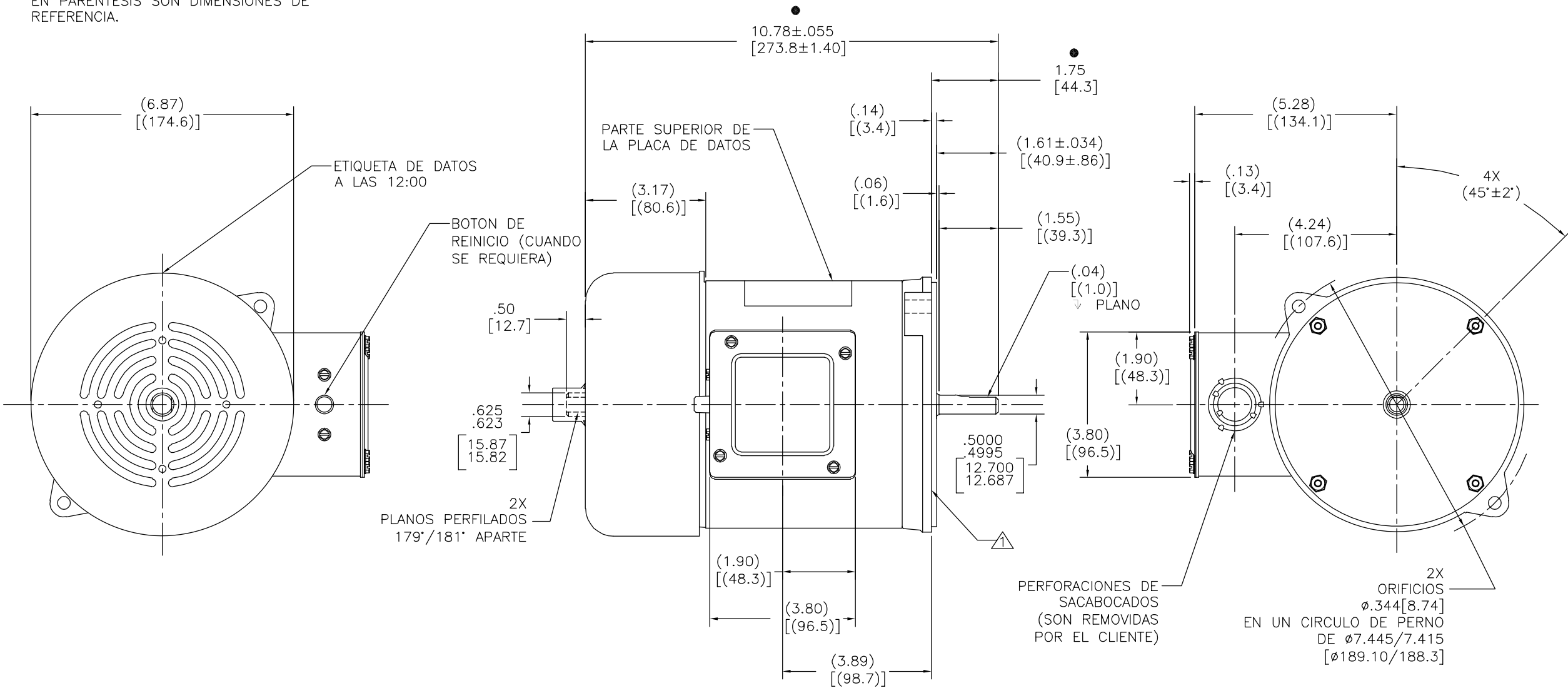
2

1

REVISION:	ECO	REVISADO POR:	FECHA:	APROBADO POR:	FECHA:
C	0029710	E.SINECIO	12-13-2012	D.MUÑOZ	12-13-2012

NOTAS:

1. LA CARA DEL BORDE DE MONTAJE ES PERPEDICULAR A LA \pm DE LA FLECHA DENTRO DE .004[.10] L.T.I.
2. OSCILACION DE LA FLECHA NO DEBE EXCEDER .002[.05] L.T.I.
3. TODAS LAS DIMENSIONES QUE APARECEN EN PARENTESIS SON DIMENSIONES DE REFERENCIA.



● DIMENSION CRITICA

<p>CARACTERISTICAS DE GEOMETRIA Y SIMBOLOS</p> <ul style="list-style-type: none"> □ PLANICIDAD - RECTITUD ∠ ANGULARIDAD ⊥ PERPENDICULARIDAD (A ESCUADRA) // PARALELISMO ○ REDONDEZ (CIRCULARIDAD) ∅ CILINDRICIDAD △ PERFIL DE CUALQUIER SUPERFICIE ∇ PERFIL DE CUALQUIER LINEA ∠ VARIACION ⊕ POSICION REAL ◎ CONCENTRICIDAD = SIMETRIA <p>ASME Y14.5M 1994</p>	<p>A MENOS QUE SE ESPECIFIQUE DE OTRA MANERA, LAS TOLERANCIAS DE LAS DIMS; SON LAS SIGUIENTES:</p> <p>PULG ±.1 ±.02 ±.005 ±.0005 mm ±0.5 ±0.13 ±0.013</p> <p>ANG. ±.50 GRADOS</p> <p>ELIMINAR REBABAS Y ORILLAS FILOSAS DEL BORDE.</p> <p>PULG .003-.015 mm 0.1-0.4</p> <p>FILETEAR ESQUINA: PULG .020 mm 0.5</p> <p>MAQUINAR SUPERFICIES</p> <p>PULG 125 mm 3.2</p> <p>DIMS METRICAS MOSTRADAS [PARENTESIS]</p>	<p>DIBUJADO POR:</p> <p>A.NAJERA</p> <p>04-26-2012</p>	<p>REGAL REGAL-BELOIT CORPORATION</p> <p>DESCRIPCION:</p> <p>MODEL-CFHP-56FR OUTLINE</p>
		<p>APROBADO POR:</p> <p>S.WALLACE</p> <p>04-26-2012</p>	
		<p>ESCALA: NONE</p>	<p>HOJA: 1</p>

4

3

2

1