

4

3

2

1

GENERAL INFORMATION:

SHAFT RUNOUT: .001 [.03] T.I.R. PER INCH LENGTH OF EXTENSION

END PLAY: .010 [.25] TO .063 [1.60]

BEARINGS: SLEEVE

MOUNTING POSITION: HORIZONTAL

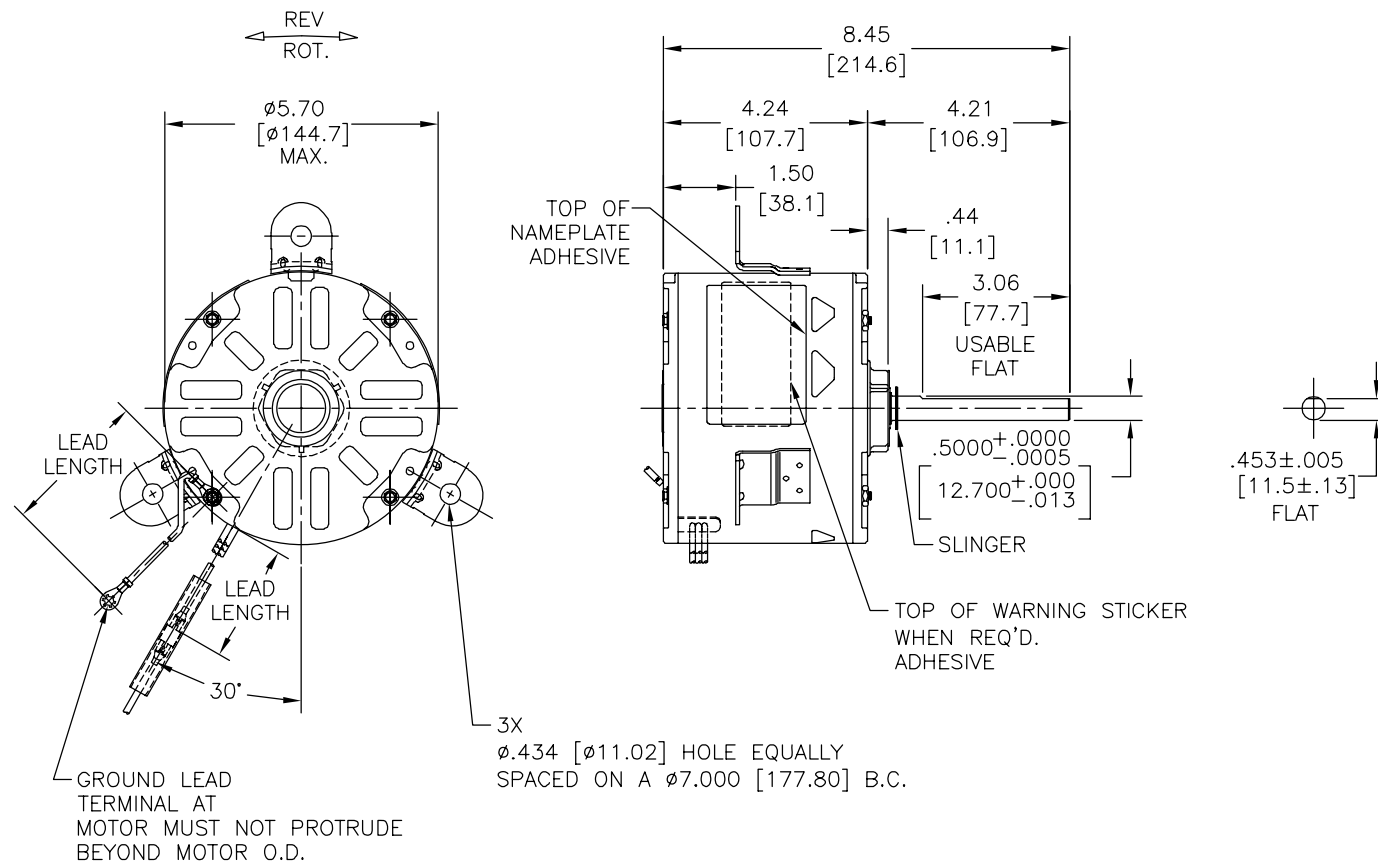
ELECTRICAL DATA:

OVERLOAD PROTECTOR: AUTOMATIC RESET (T.I. 7AM 036)

LEADS: NO. 18 GA., .06 [1.5] THK. EPDM 125°C INSUL.

GROUND LEAD: NO. 18 GA., .03 [.8] THK. GRN INSUL.

REV	ECO	REV BY	DATE	APPD	DATE
C	0004877	C. CARRILLO	03-04-2009	M. ARGUELLES	03-04-2009



NAMEPLATE DATA:	EXTERNAL CONNECTION DIAGRAM
MODEL NO.: F48Z07A01 CUST. P/N: OCB1036A HP: 1/3 ROT.: REV RPM: 1075/2 SPD TYPE: UF FRAME: 48Y VOLTS: 208-230 PH: 1 AMPS: 2.5 HZ: 60 INS.: B AMB.: 60°C DUTY: AIR OVER CAP.: 5.0 MFD/370 V ENCL: SEMI-ENCL. UL LOGO CSA LOGO THERMALLY PROTECTED	

COLOR	LENGTH	TERMINAL OR STRIP LENGTH
GREEN (GRD)	53.0/56.0 [1346/1422]	#10 EYELET
BROWN	53.0/56.0 [1346/1422]	.25 [6.4] FEMALE SPADE
YELLOW	53.0/56.0 [1346/1422]	.25 [6.4] FEMALE SPADE
BLACK	53.0/56.0 [1346/1422]	.25 [6.4] FEMALE SPADE
RED	53.0/56.0 [1346/1422]	.25 [6.4] FEMALE SPADE
ORANGE	53.0/56.0 [1346/1422]	.25 [6.4] FEMALE SPADE
PURPLE	53.0/56.0 [1346/1422]	.25 [6.4] FEMALE SPADE

MAIN FRAME - OLE	OPEN
END FRAME - OLE	OPEN
MAIN FRAME - LE	ENCLOSED
END FRAME - LE	OPEN

CUSTOMER	DIST SERVICES
----------	---------------

PERFORMANCE CURVE NO.	TORQUE @1075 RPM (25°C)	APPROVED SAMPLE	UL COMPONENT		CSA	
C21511	32.5 OZ. FT.	EX10604	FILE #	CCN #	FILE #	CLASS #
			E46412	PRGY2	LR43341	4211-01

GEOMETRIC CHARACTERISTICS & SYMBOLS  
 ▽ FLATNESS  
 - STRAIGHTNESS  
 ∠ ANGULARITY  
 ⊥ PERPENDICULARITY (SQUARENESS)  
 // PARALLELISM  
 ○ ROUNDNESS (CIRCULARITY)  
 ∅ CYLINDRICITY  
 △ PROFILE OF ANY SURFACE  
 ∩ PROFILE OF ANY LINE  
 ↑ RUNOUT  
 ⊕ TRUE POSITION  
 ⊙ CONCENTRICITY  
 = SYMMETRY

A.O. SMITH PROVIDES TECHNICAL ASSISTANCE TO OUR CUSTOMERS IN SEVERAL AREAS. SINCE A.O. SMITH DOES NOT RECEIVE ALL DATA CONCERNING THE USE AND APPLICATION OF THE MOTOR, THE SUITABILITY OF THE MOTOR FOR THE APPLICATION MUST BE DETERMINED BY THE CUSTOMER.

DIMENSIONS WITHOUT TOLERANCES ARE FOR REFERENCE ONLY.

DR BY:	SRECKERS	03-19-2007
APPD:	-	-
THIRD ANGLE PROJECTION		EDS DATE 01-21-2007 FORMAT REV F
CONFIDENTIAL: THIS DRAWING AND ITS INFORMATION ARE THE EXCLUSIVE AND CONFIDENTIAL PROPERTY OF A.O. SMITH CORP. AND ARE NOT TO BE DISCLOSED, DUPLICATED, DISTRIBUTED OR OTHERWISE USED WITHOUT THE WRITTEN CONSENT OF A.O. SMITH CORP. -ALL RIGHTS RESERVED. ASME Y14.5M 1994		

		<b>ELECTRICAL PRODUCTS COMPANY</b> A DIVISION OF A. O. SMITH CORPORATION	
DESCRIPTION			
OUTLINE			
SIZE	C	DWG NO	F48Z07A01
SCALE	NONE	SHEET	1

4

3

2

1

4

3

2

1

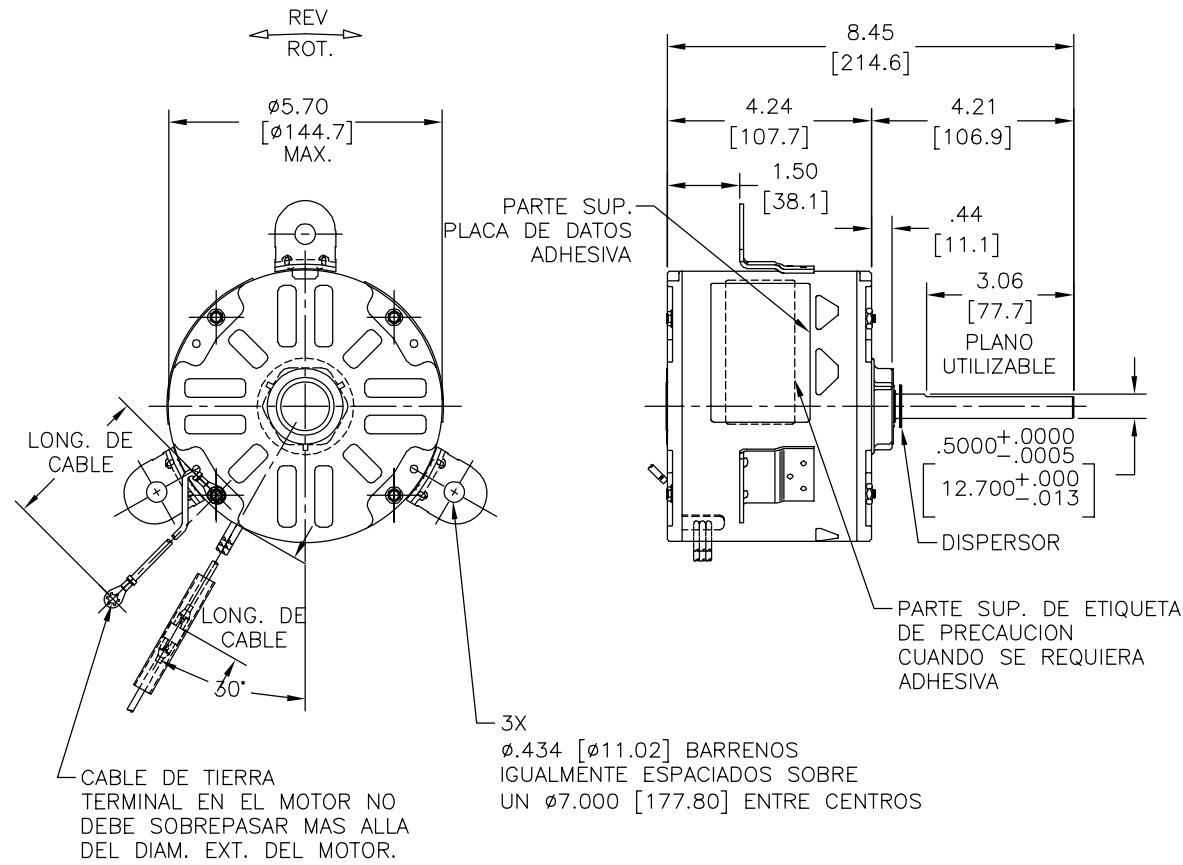
INFORMACION GENERAL:

OSCILACION DE FLECHA: .001 [.03] L.T.I. LONG. DE EXTENSION POR PULG.  
 JUEGO AXIAL: .010 [.25] A .063 [1.60]  
 BALEROS: MANGA  
 POSICION DEL MONTAJE: HORIZONTAL

INFORMACION ELECTRICA:

PROTECTOR DE SOBRECARGA: REINICIO AUTOMATICO (T.I. 7AM 036)  
 CABLES: CAL. NO. 18, .06 [1.5] DE ESP. EPDM A 125°C AISL.  
 CABLE DE TIERRA: CAL. NO. 18, .03 [.8] DE ESP. AISL. VERDE.

REVISION:	ECO	REVISADO POR:	FECHA:	APROBADO POR:	FECHA:
C	0004877	C. CARRILLO	03-04-2009	M. ARGUELLES	03-04-2009



VERDE (TIERRA)	53.0/56.0 [1346/1422]	#10 OJAL
CAFE	53.0/56.0 [1346/1422]	.25 [6.4] TER. HEMBRA TIPO ESPADA
AMARILLO	53.0/56.0 [1346/1422]	.25 [6.4] TER. HEMBRA TIPO ESPADA
NEGRO	53.0/56.0 [1346/1422]	.25 [6.4] TER. HEMBRA TIPO ESPADA
ROJO	53.0/56.0 [1346/1422]	.25 [6.4] TER. HEMBRA TIPO ESPADA
NARANJA	53.0/56.0 [1346/1422]	.25 [6.4] TER. HEMBRA TIPO ESPADA
MORADO	53.0/56.0 [1346/1422]	.25 [6.4] TER. HEMBRA TIPO ESPADA
COLOR	LONG.	TERMINAL O LONG. DE DESFORRE

CARCAZA PPAL. - OLE	ABIERTO
TAPA FINAL - OLE	ABIERTO
CARCAZA PPAL. - LE	CERRADO
TAPA FINAL - LE	ABIERTO

CLIENTE	DIST SERVICES
---------	---------------

INFORMACION DE ETIQUETA:	DIAGRAMA DE CONEXION EXTRNA
MODEL NO.: F48Z07A01 CUST. P/N: OCB1036A HP: 1/3 ROT.: REV RPM: 1075/2 SPD TYPE: UF FRAME: 48Y VOLTS: 208-230 PH: 1 AMPS: 2.5 HZ: 60 INS.: B AMB.: 60°C DUTY: AIR OVER CAP.: 5.0 MFD/370 V ENCL: SEMI-ENCL. UL LOGO CSA LOGO THERMALLY PROTECTED	<p>MOSTRADO PARA ROT. CCWLE PARA ROT. CWLE INTERCAMBIAR CABLES NARANJA Y CAFE 614131-052</p>

CURVAS DE FUNCIONAMIENTO	TORSION @1075 RPM (25°C)	MUESTRA APROBADA	COMPONENTE UL	CSA
C21511	32.5 OZ. FT.	EX10604	#ARCHIVO PRGY2	CLASE # 4211-01

- CARACTERISTICAS DE GEOMETRIA Y SIMBOLOS
- ✓ PLANICIDAD
  - RECTITUD
  - ∠ ANGULARIDAD
  - ⊥ PERPENDICULARIDAD (A ESCUADRA)
  - ∥ PARALELISMO
  - REDONDEZ (CIRCULARIDAD)
  - ∅ CILINDRICIDAD
  - △ PERFIL DE CUALQUIER SUPERFICIE
  - ∩ PERFIL DE CUALQUIER LINEA
  - ∇ VARIACION
  - ⊕ POSICION REAL
  - ⊙ CONCENTRICIDAD
  - = SIMETRIA

A.O. SMITH PROVEE ASISTENCIA TECNICA A NUESTROS CLIENTES EN VARIAS AREAS. DESDE QUE A.O. SMITH NO RECIBE TODOS LOS DATOS EN RELACION AL USO Y A LA APLICACION DEL MOTOR, LA APLICACION ADECUADA DEL MOTOR DEBE SER DETERMINADA POR EL CLIENTE.

DIMENSIONES SIN TOLERANCIA SON DE REFERENCIA SOLAMENTE

DIBUJADO POR: SRECKERS  
 APROBADO POR: -  
 TERCER ANGULO DE PROYECCION: FECHA EDS: 01-21-2007  
 REV. FORMATO: F

CONFIDENCIAL: ESTE DIBUJO Y SU INFORMACION SON PROPIEDAD DE USO EXCLUSIVO Y CONFIDENCIAL DE A.O.SMITH CORP. Y NO DEBERAN SER REVELADOS, DUPLICADOS, DISTRIBUIDOS O USARSE DE OTRA MANERA SIN EL CONSENTIMIENTO ESCRITO DE A.O. SMITH CORP. -TODOS LOS DERECHOS RESERVADOS.ASME Y14.5M 1994

**AC Smith** **ELECTRICAL PRODUCTS COMPANY**  
Innovation has a name. A DIVISION OF A. O. SMITH CORPORATION

DESCRIPCION: **OUTLINE**

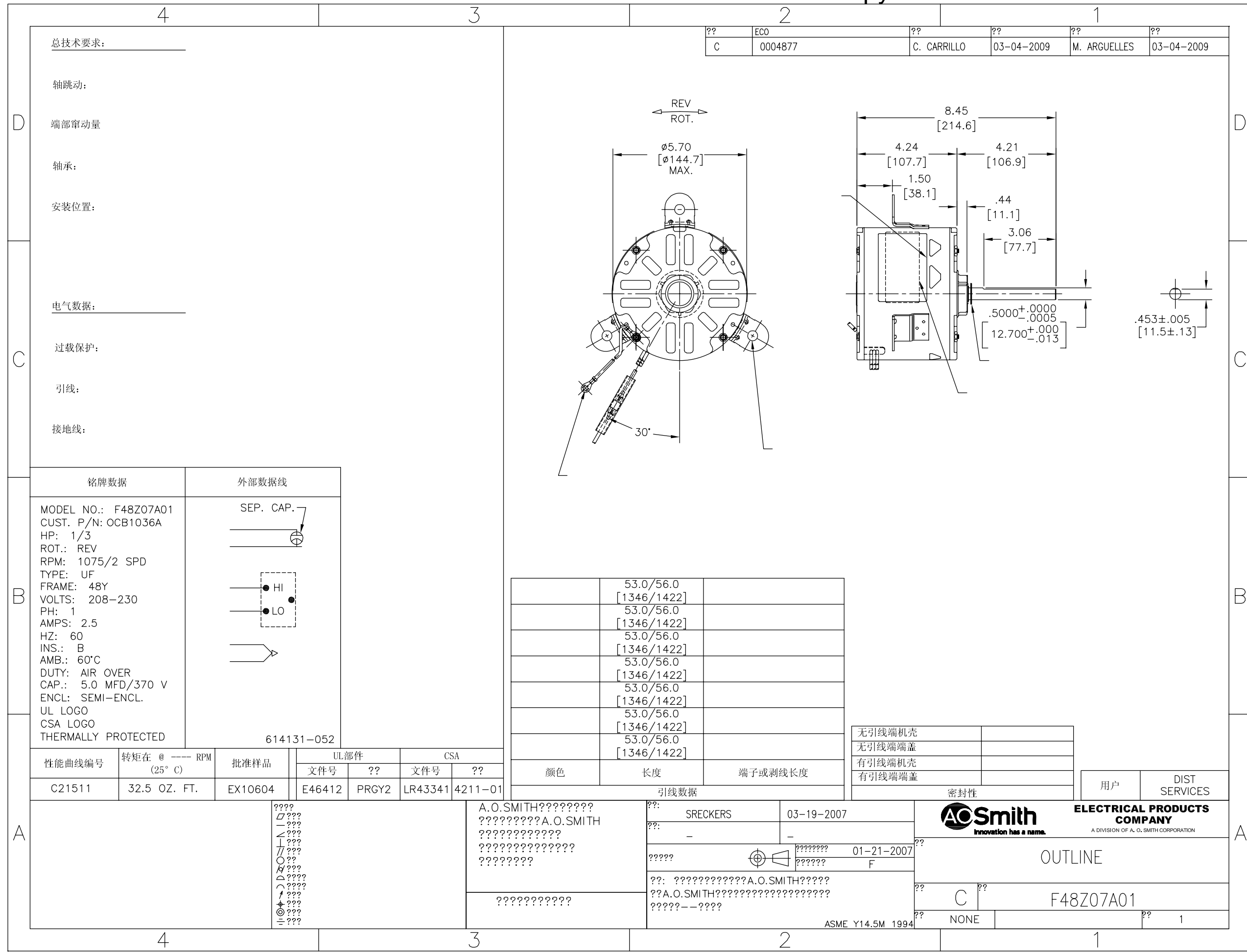
TAMAÑO: C NUMERO DE DIBUJO: F48Z07A01  
 ESCALA: NONE HOJA: 1

4

3

2

1



??	ECO	??	??	??	??
C	0004877	C. CARRILLO	03-04-2009	M. ARGUELLES	03-04-2009

总技术要求: \_\_\_\_\_

轴跳动:

端部窜动量

轴承:


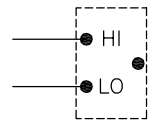

安装位置:

电气数据: \_\_\_\_\_

过载保护:

引线:

接地线:


铭牌数据	外部数据线
MODEL NO.: F48Z07A01 CUST. P/N: OCB1036A HP: 1/3 ROT.: REV RPM: 1075/2 SPD TYPE: UF FRAME: 48Y VOLTS: 208-230 PH: 1 AMPS: 2.5 HZ: 60 INS.: B AMB.: 60°C DUTY: AIR OVER CAP.: 5.0 MFD/370 V ENCL: SEMI-ENCL. UL LOGO CSA LOGO THERMALLY PROTECTED	SEP. CAP.     

	53.0/56.0	
	[1346/1422]	
	53.0/56.0	
	[1346/1422]	
	53.0/56.0	
	[1346/1422]	
	53.0/56.0	
	[1346/1422]	
	53.0/56.0	
	[1346/1422]	
	53.0/56.0	
	[1346/1422]	

无引线端机壳	
无引线端端盖	
有引线端机壳	
有引线端端盖	

性能曲线编号	转矩在 @ --- RPM (25° C)	批准样品	UL部件	CSA
C21511	32.5 OZ. FT.	EX10604	文件号 ??	文件号 ??

颜色	长度	端子或剥线长度
----	----	---------

密封性	用户	DIST SERVICES
 <b>ELECTRICAL PRODUCTS COMPANY</b> <small>A DIVISION OF A. O. SMITH CORPORATION</small>		
OUTLINE		
C	F48Z07A01	
NONE		1

A.O.SMITH????????? ??????????A.O.SMITH ?????????????? ?????????????????? ??????????
?????????????? ??????????????

SRECKERS 03-19-2007 - - ??????? 01-21-2007 ??????? F ??: ??????????????A.O.SMITH????? ??A.O.SMITH????????????????????? ??????-?????
---

ASME Y14.5M 1994
------------------