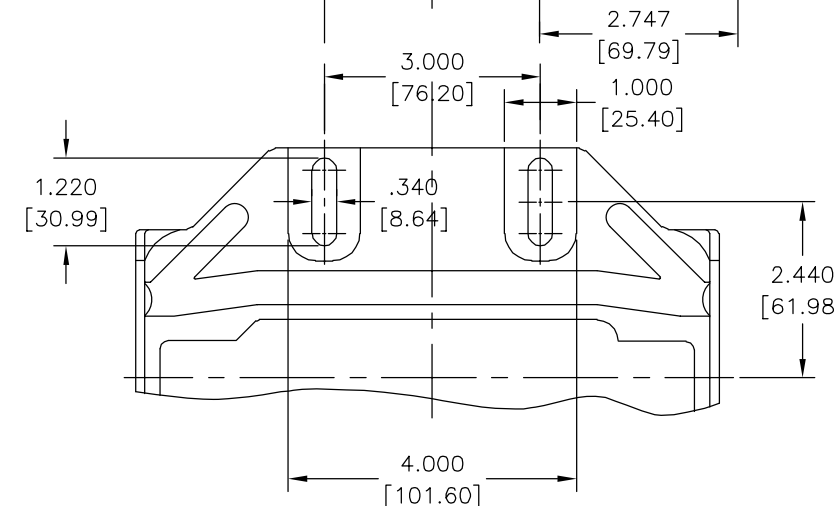
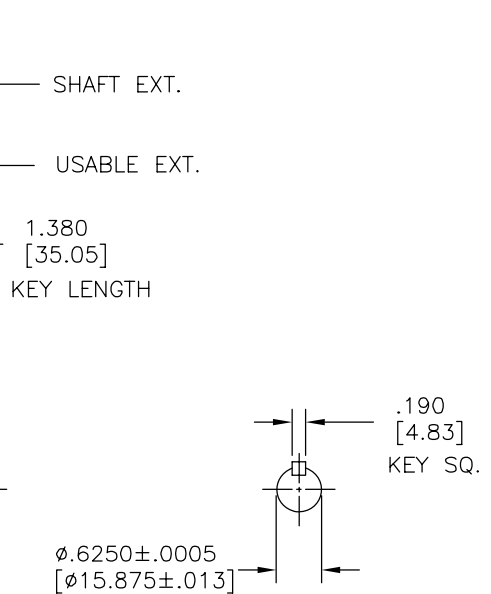
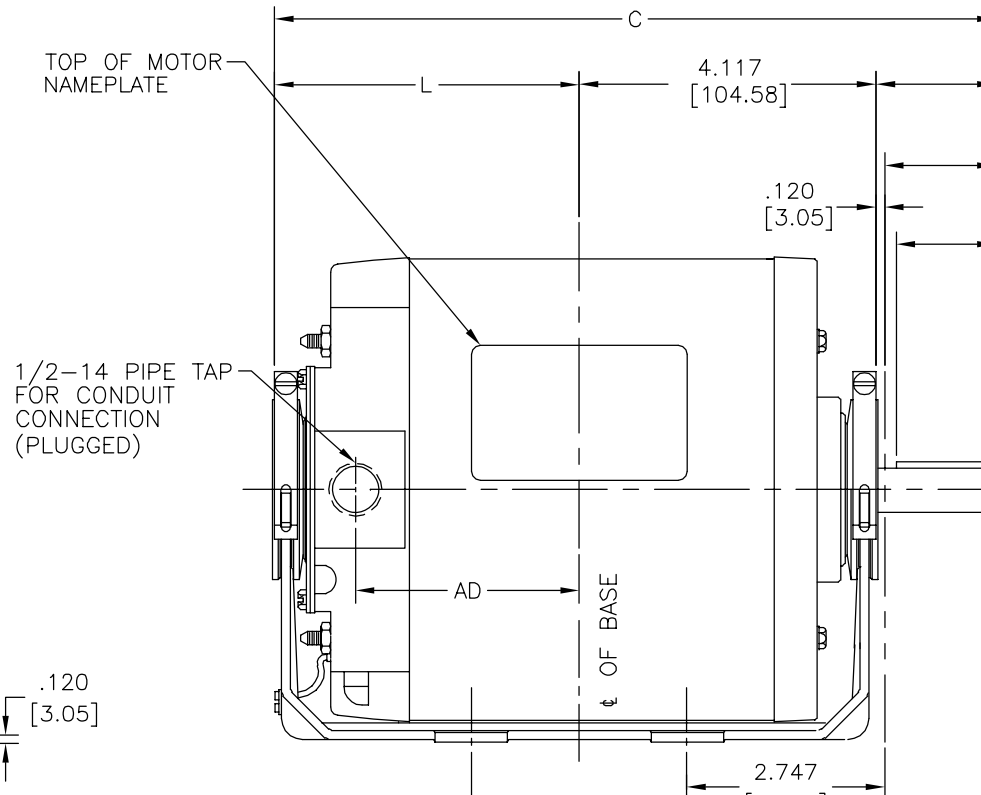
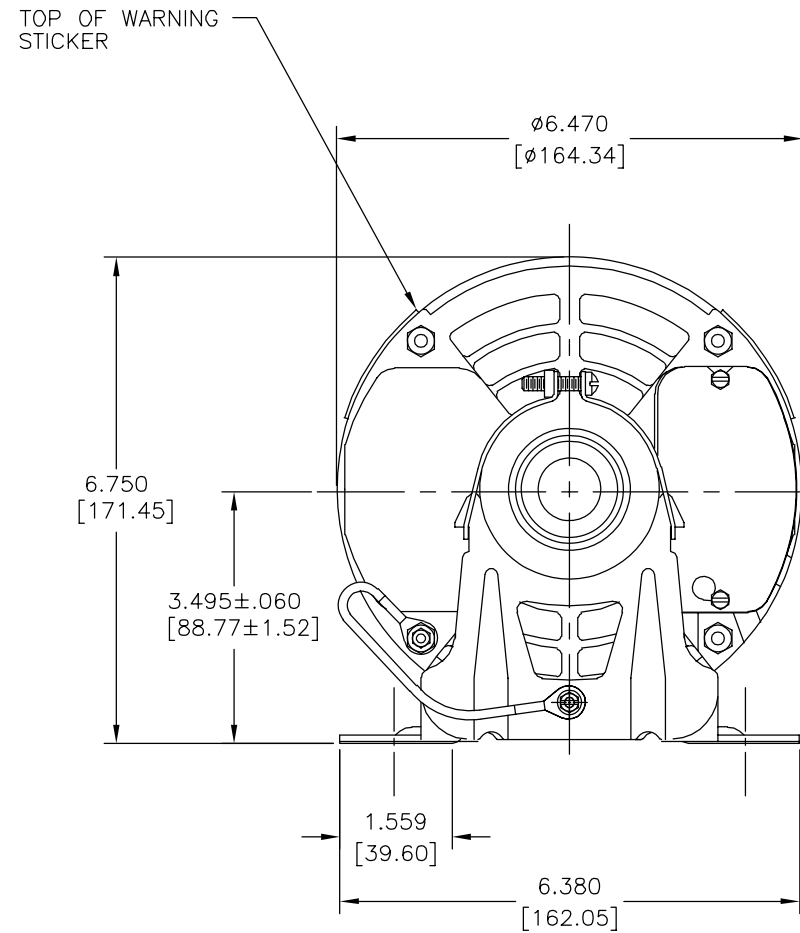


REV	ECO	REV BY	DATE	APPD	DATE
D	0025386	L. BERNAL	04-13-2012	D. BALDERRAMA	04-13-2012



GK2074D	5.562 [141.27]	10.84 [275.3]	4.72 [119.8]	3.58 [90.9]	2.00 [50.8]	1.88 [47.7]
RB2026L	5.562 [141.27]	10.84 [275.3]	4.72 [119.8]	3.58 [90.9]	2.00 [50.8]	1.88 [47.7]
RB3054A	5.562 [141.27]	10.84 [275.3]	4.72 [119.8]	3.58 [90.9]	2.00 [50.8]	1.88 [47.7]
RB3074A	6.062 [153.97]	11.34 [288.0]	5.22 [132.6]	4.08 [103.6]	2.00 [50.8]	1.88 [47.7]
RS2054D	5.062 [128.57]	10.34 [262.6]	4.22 [107.1]	3.08 [78.2]	2.00 [50.8]	1.88 [47.7]
SGK2034	5.062 [128.57]	10.34 [262.6]	4.22 [107.1]	3.08 [78.2]	2.00 [50.8]	1.88 [47.7]
SGK2054	5.562 [141.27]	10.84 [275.3]	4.72 [119.8]	3.58 [90.9]	2.00 [50.8]	1.88 [47.7]
312P629	5.562 [141.27]	10.84 [275.3]	4.72 [119.8]	3.58 [90.9]	2.00 [50.8]	1.88 [47.7]
327P297	7.062 [179.37]	12.34 [313.4]	6.22 [158.0]	5.08 [129.0]	2.00 [50.8]	1.88 [47.7]
327P773	6.562 [166.67]	11.84 [300.7]	5.72 [145.2]	4.58 [116.3]	2.00 [50.8]	1.88 [47.7]
327P828	5.562 [141.27]	10.34 [262.6]	4.22 [107.1]	3.08 [78.2]	2.00 [50.8]	1.88 [47.7]
327P886	6.562 [166.67]	11.84 [300.7]	5.72 [145.2]	4.58 [116.3]	2.00 [50.8]	1.88 [47.7]
5K269	5.562 [141.27]	10.84 [275.3]	4.72 [119.8]	3.58 [90.9]	2.00 [50.8]	1.88 [47.7]
MODEL NUMBER	FRAME LENGTH REF.	C	L	AD	SHAFT EXT.	USABLE EXT.

GEOMETRIC CHARACTERISTICS & SYMBOLS
 □ FLATNESS
 — STRAIGHTNESS
 ∠ ANGULARITY
 ⊥ PERPENDICULARITY (SQUARENESS)
 // PARALLELISM
 ○ ROUNDNESS (CIRCULARITY)
 ∅ CYLINDRICITY
 △ PROFILE OF ANY SURFACE
 ∩ PROFILE OF ANY LINE
 ↗ RUNOUT
 ⊕ TRUE POSITION
 ⊙ CONCENTRICITY
 = SYMMETRY
 ASME Y14.5M 1994

UNLESS OTHERWISE SPECIFIED
 DIM. TOLERANCES ARE AS FOLLOWS:
 INCH X XX XXX XXXX
 mm ±0.5 ±0.13 ±0.013
 ANG. ±.50 DEG
 REMOVE BURRS & BREAK SHARP EDGES:
 INCH .003-.015 mm 0.1-0.4
 CORNER FILLETS TO:
 INCH .020 mm 0.5
 MACHINE SURFACES:
 INCH 125 mm 3.2
 METRIC DIMS. SHOWN IN [BRACKETS]

DR BY:
 APPD:
 THIRD ANGLE PROJECTION
 EDS DATE 11-11-2011
 FORMAT REV G
 CONFIDENTIAL: THIS DRAWING AND ITS INFORMATION ARE THE EXCLUSIVE AND CONFIDENTIAL PROPERTY OF REGAL-BELOIT CORPORATION AND ARE NOT TO BE DISCLOSED, DUPLICATED, DISTRIBUTED OR OTHERWISE USED WITHOUT THE WRITTEN CONSENT OF REGAL-BELOIT CORPORATION. -ALL RIGHTS RESERVED.

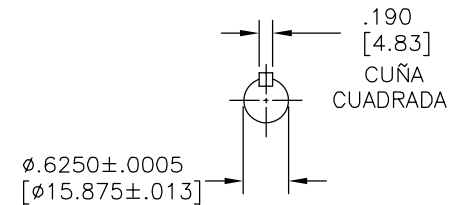
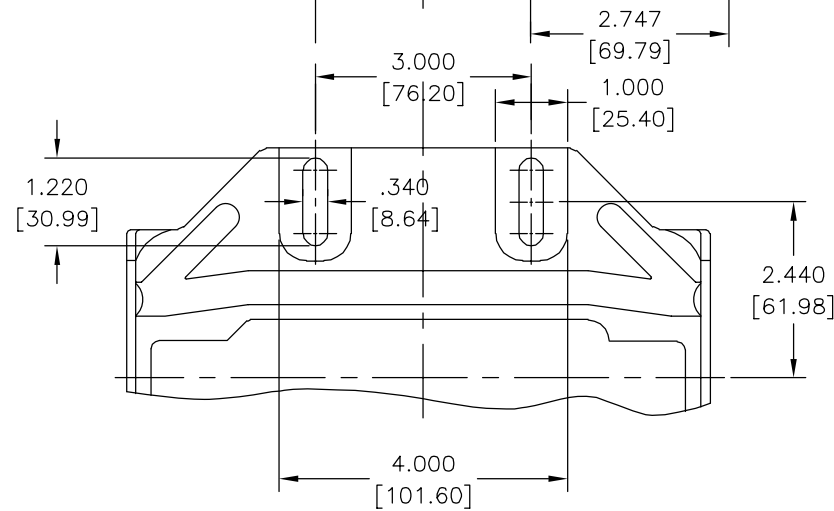
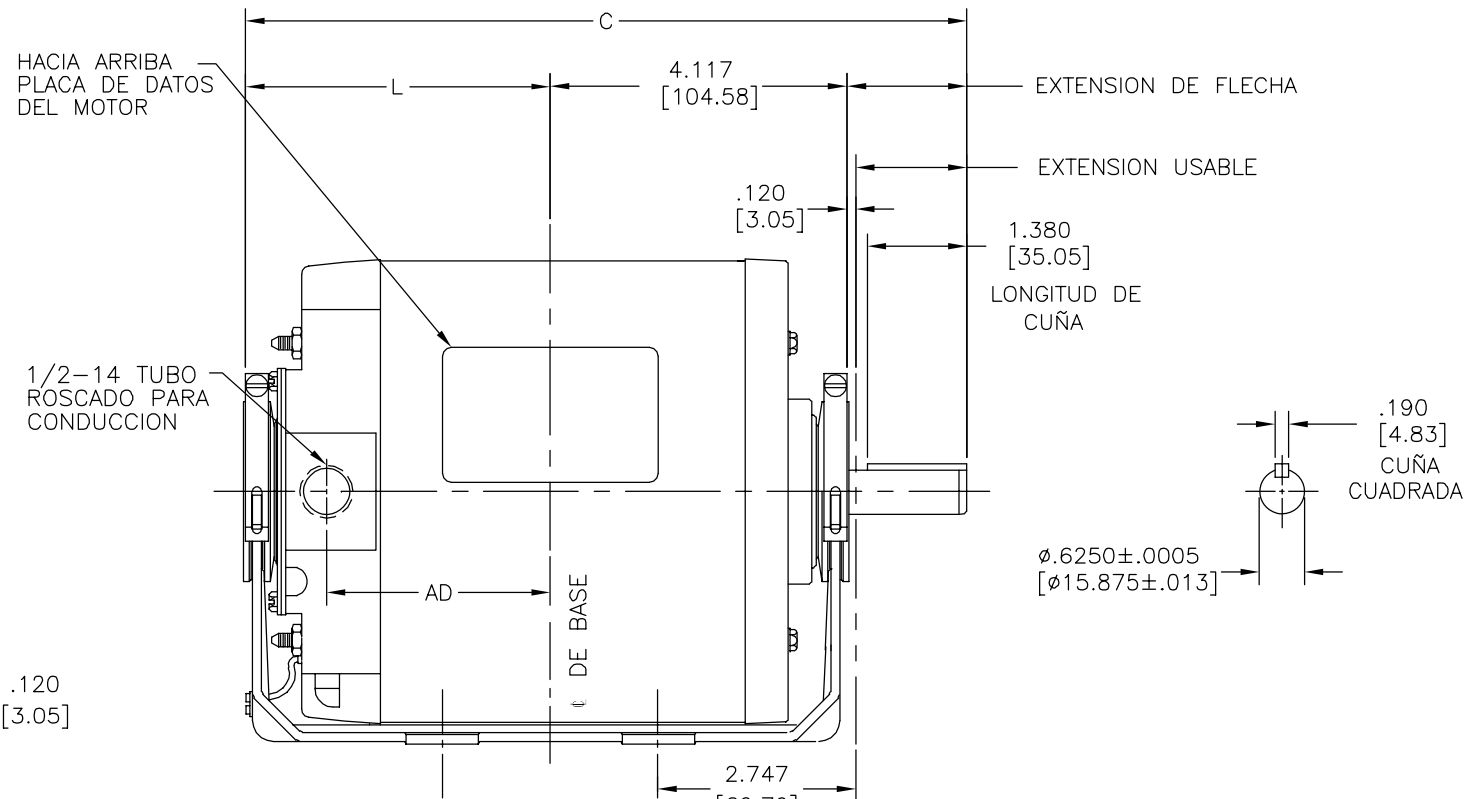
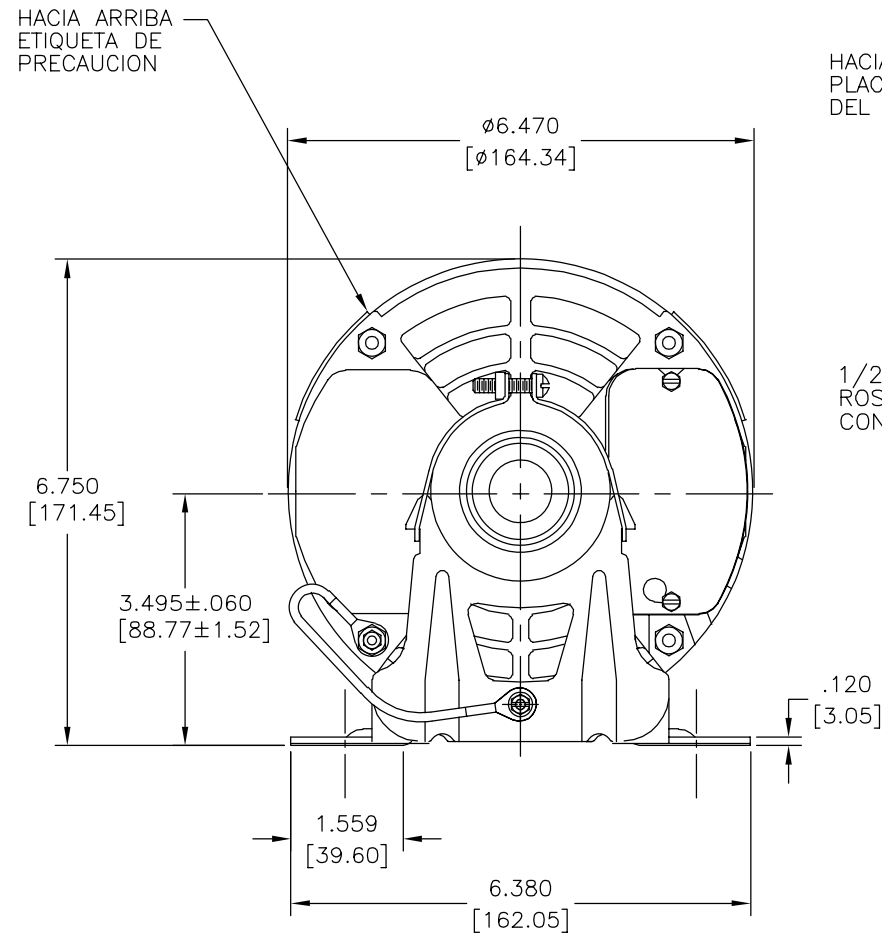
REGAL-BELOIT CORPORATION

DESCRIPTION: **OUTLINE**

SIZE: **C** DWG NO: **11612-078**

SCALE: **NONE** SHEET: **1**

REVISION:	ECO	REVISADO POR:	FECHA:	APROBADO POR:	FECHA:
D	0025386	L. BERNAL	04-13-2012	D. BALDERRAMA	04-13-2012



GK2074D	5.562 [141.27]	10.84 [275.3]	4.72 [119.8]	3.58 [90.9]	2.00 [50.8]	1.88 [47.7]
RB2026L	5.562 [141.27]	10.84 [275.3]	4.72 [119.8]	3.58 [90.9]	2.00 [50.8]	1.88 [47.7]
RB3054A	5.562 [141.27]	10.84 [275.3]	4.72 [119.8]	3.58 [90.9]	2.00 [50.8]	1.88 [47.7]
RB3074A	6.062 [153.97]	11.34 [288.0]	5.22 [132.6]	4.08 [103.6]	2.00 [50.8]	1.88 [47.7]
RS2054D	5.062 [128.57]	10.34 [262.6]	4.22 [107.1]	3.08 [78.2]	2.00 [50.8]	1.88 [47.7]
SGK2034	5.062 [128.57]	10.34 [262.6]	4.22 [107.1]	3.08 [78.2]	2.00 [50.8]	1.88 [47.7]
SGK2054	5.562 [141.27]	10.84 [275.3]	4.72 [119.8]	3.58 [90.9]	2.00 [50.8]	1.88 [47.7]
312P629	5.562 [141.27]	10.84 [275.3]	4.72 [119.8]	3.58 [90.9]	2.00 [50.8]	1.88 [47.7]
327P297	7.062 [179.37]	12.34 [313.4]	6.22 [158.0]	5.08 [129.0]	2.00 [50.8]	1.88 [47.7]
327P773	6.562 [166.67]	11.84 [300.7]	5.72 [145.2]	4.58 [116.3]	2.00 [50.8]	1.88 [47.7]
327P828	5.562 [141.27]	10.34 [262.6]	4.22 [107.1]	3.08 [78.2]	2.00 [50.8]	1.88 [47.7]
327P886	6.562 [166.67]	11.84 [300.7]	5.72 [145.2]	4.58 [116.3]	2.00 [50.8]	1.88 [47.7]
5K269	5.562 [141.27]	10.84 [275.3]	4.72 [119.8]	3.58 [90.9]	2.00 [50.8]	1.88 [47.7]
NUMERO DE MODELO	LONGITUD CARCAZA REF	C	L	AD	EXT. FLECHA	EXT. USABLE

CARACTERISTICAS DE GEOMETRIA Y SIMBOLOS
 ✓ PLANICIDAD
 — RECTITUD
 < ANGULARIDAD
 ⊥ PERPENDICULARIDAD (A ESCUADRA)
 // PARALELISMO
 ○ REDONDEZ (CIRCULARIDAD)
 ∅ CILINDRICIDAD
 △ PERFIL DE CUALQUIER SUPERFICIE
 ∩ PERFIL DE CUALQUIER LINEA
 ∠ VARIACION
 ⊕ POSICION REAL
 ⊙ CONCENTRICIDAD
 = SIMETRIA

A MENOS QUE SE ESPECIFIQUE DE OTRA MANERA, LAS TOLERANCIAS DE LAS DIMS; SON LAS SIGUIENTES:
 PULG ±.1 ±.02 ±.005 ±.0005
 mm ±0.5 ±0.13 ±0.013
 ANG. ± 50 GRADOS
 ELIMINAR REBABAS Y ORILLAS FILOSAS DEL BORDE.
 PULG .003-.015 mm 0.1-0.4
 FILETEAR ESQUINA: PULG .020 mm 0.5
 MAQUINAR SUPERFICIES
 PULG 125 mm 3.2

DIBUJADO POR:
 APROBADO POR:
 TERCER ANGULO DE PROYECCION
 CONFIDENCIAL: ESTE DIBUJO Y SU INFORMACION SON PROPIEDAD DE USO EXCLUSIVO Y CONFIDENCIAL DE REGAL-BELOIT CORPORATION. Y NO DEBERAN SER REVELADOS, DUPLICADOS, DISTRIBUIDOS O USARSE DE OTRA MANERA SIN EL CONSENTIMIENTO ESCRITO DE REGAL-BELOIT CORPORATION. -TODOS LOS DERECHOS RESERVADOS.

REGAL-BELOIT CORPORATION

DESCRIPCION: **OUTLINE**

TAMAÑO: C NUMERO DE DIBUJO: 11612-078

ESCALA: NONE HOJA: 1

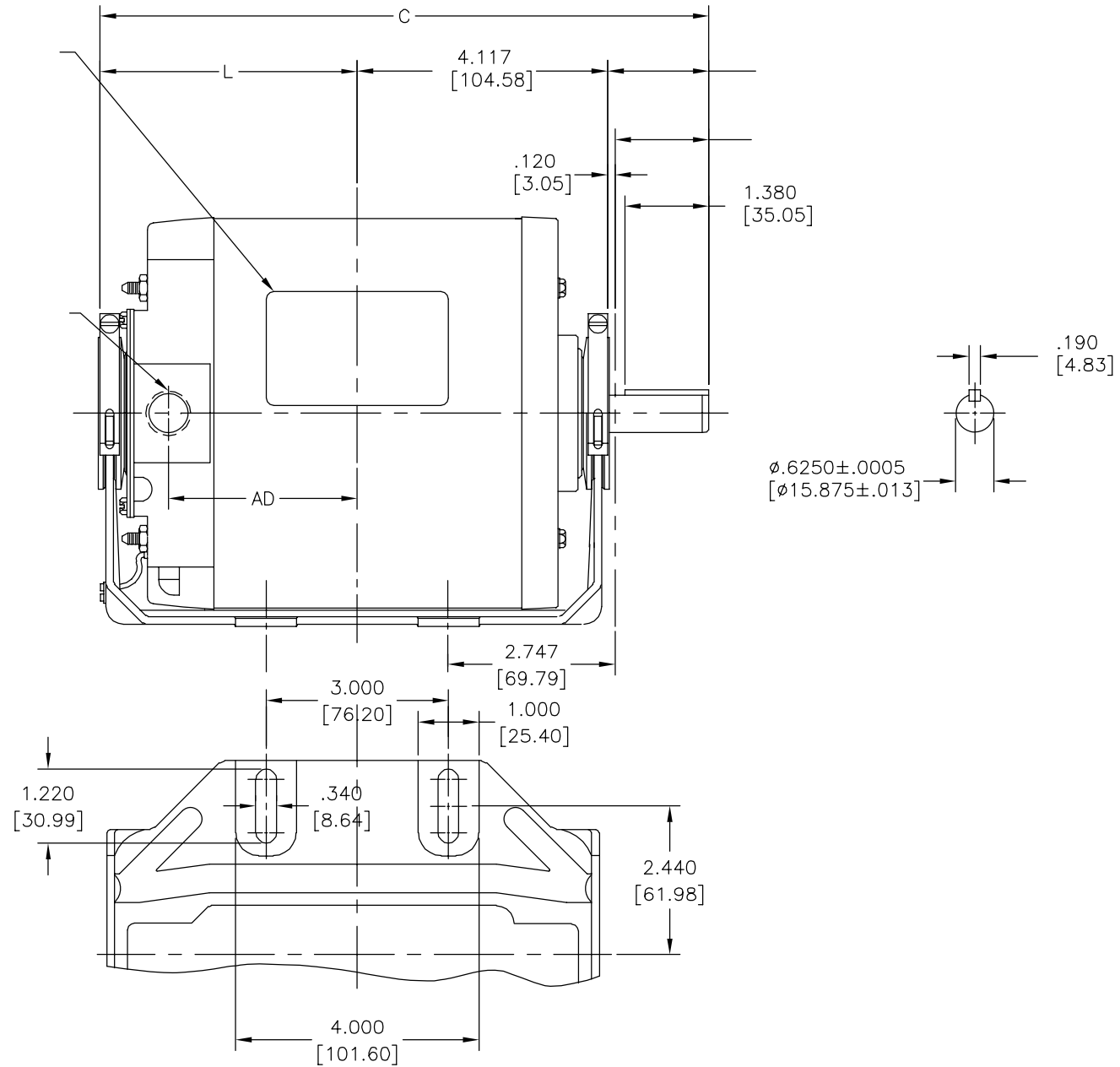
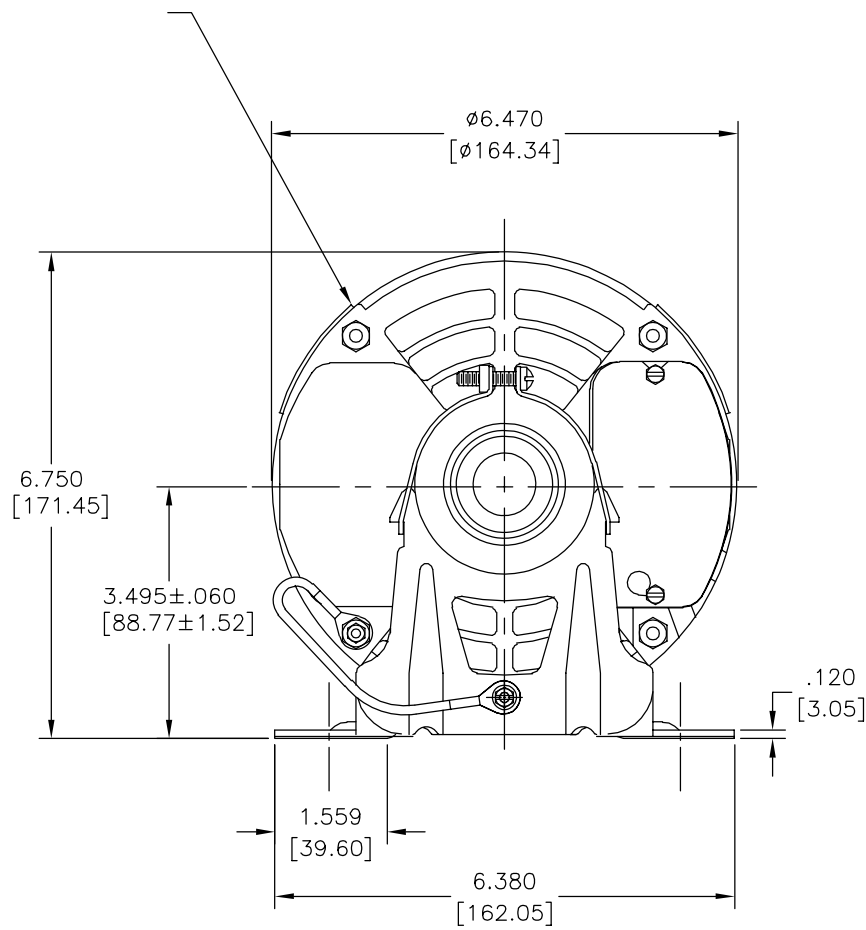
4

3

2

1

版本	ECO	编制	日期	批准	日期
D	0025386	L. BERNAL	04-13-2012	D. BALDERRAMA	04-13-2012



B	GK2074D	5.562[141.27]	10.84[275.3]	4.72[119.8]	3.58[90.9]	2.00[50.8]	1.88[47.7]
	RB2026L	5.562[141.27]	10.84[275.3]	4.72[119.8]	3.58[90.9]	2.00[50.8]	1.88[47.7]
	RB3054A	5.562[141.27]	10.84[275.3]	4.72[119.8]	3.58[90.9]	2.00[50.8]	1.88[47.7]
	RB3074A	6.062[153.97]	11.34[288.0]	5.22[132.6]	4.08[103.6]	2.00[50.8]	1.88[47.7]
	RS2054D	5.062[128.57]	10.34[262.6]	4.22[107.1]	3.08[78.2]	2.00[50.8]	1.88[47.7]
	SGK2034	5.062[128.57]	10.34[262.6]	4.22[107.1]	3.08[78.2]	2.00[50.8]	1.88[47.7]
	SGK2054	5.562[141.27]	10.84[275.3]	4.72[119.8]	3.58[90.9]	2.00[50.8]	1.88[47.7]
	312P629	5.562[141.27]	10.84[275.3]	4.72[119.8]	3.58[90.9]	2.00[50.8]	1.88[47.7]
	327P297	7.062[179.37]	12.34[313.4]	6.22[158.0]	5.08[129.0]	2.00[50.8]	1.88[47.7]
	327P773	6.562[166.67]	11.84[300.7]	5.72[145.2]	4.58[116.3]	2.00[50.8]	1.88[47.7]
	327P828	5.562[141.27]	10.34[262.6]	4.22[107.1]	3.08[78.2]	2.00[50.8]	1.88[47.7]
	327P886	6.562[166.67]	11.84[300.7]	5.72[145.2]	4.58[116.3]	2.00[50.8]	1.88[47.7]
	5K269	5.562[141.27]	10.84[275.3]	4.72[119.8]	3.58[90.9]	2.00[50.8]	1.88[47.7]
			C	L	AD		

A	形位公差 □ 平面度 — 直线度 ∠ 倾斜度 ⊥ 垂直度 ∥ 平行度 ○ 圆度 ⊘ 圆柱度 ⊙ 面轮廓度 ⌒ 线轮廓度 ↗ 圆跳动 ⊕ 位置度 ⊙ 同轴度 ≡ 对称度	除另有注明 尺寸公差如下: 英寸 X XX XXX XXXX 毫米 ±0.1 ±0.2 ±.005 ±.0005 ±0.5 ±0.13 ±0.013 角度 ±.50 度 清理毛刺和尖棱 英寸 .003-.015 毫米 0.1-0.4 内圆角 英寸 .020 毫米 0.5 表面粗糙度 英制 125 米制 3.2
	ASME Y14.5M 1994 米制尺寸显示在L	

绘图:	批准:	名称
第三角投影	图纸格式发布日期 11-11-2011 图纸格式版本 G	OUTLINE
机密: 本图纸及相关信息所有权归REGAL-BELOIT CORPORATION. 未经REGAL-BELOIT CORPORATION书面授权, 不得泄露、 复制、传播或作其他用途。—版权所有		图幅 C 图号 11612-078
比例 NONE		页号 1

4

3

2

1