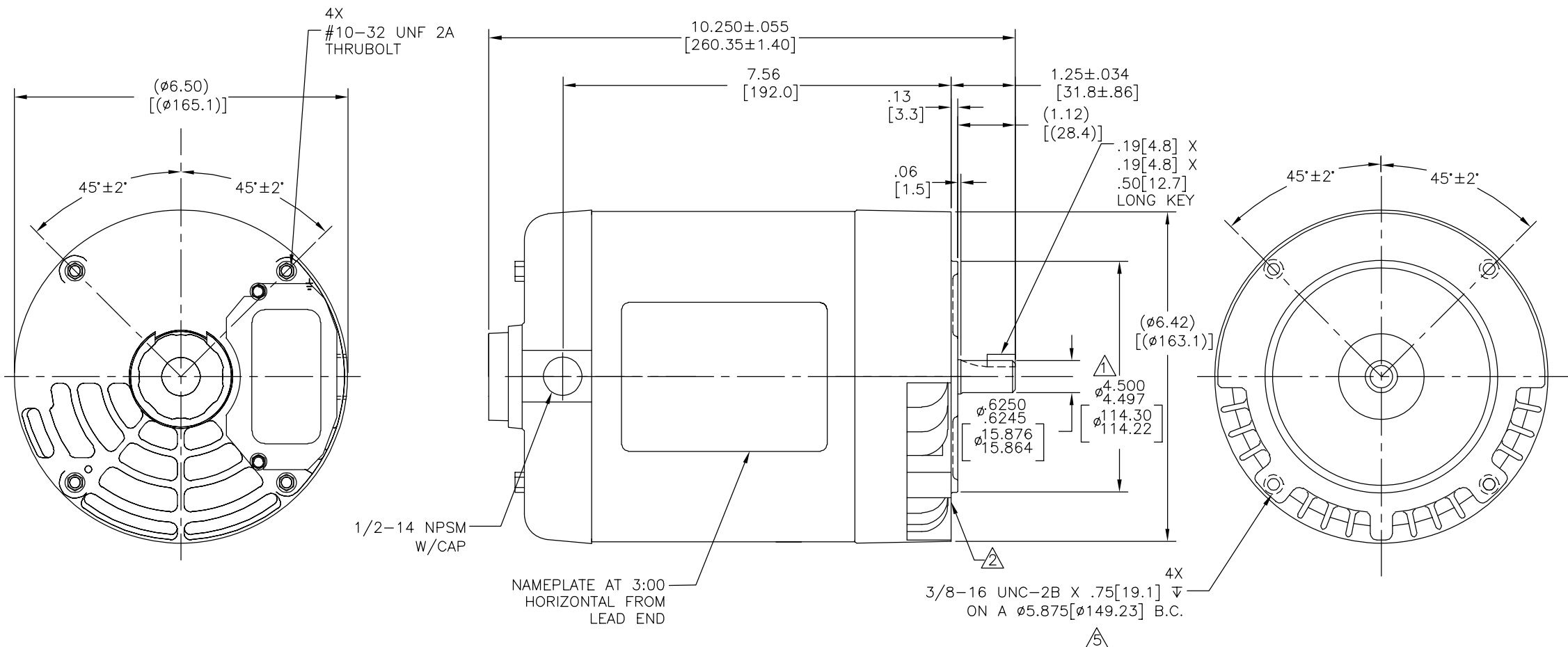


REV	ECO	REV BY	DATE	APPD	DATE
B	0025408	F.NAVARRO	04-17-2012	R.RASCON	04-17-2012

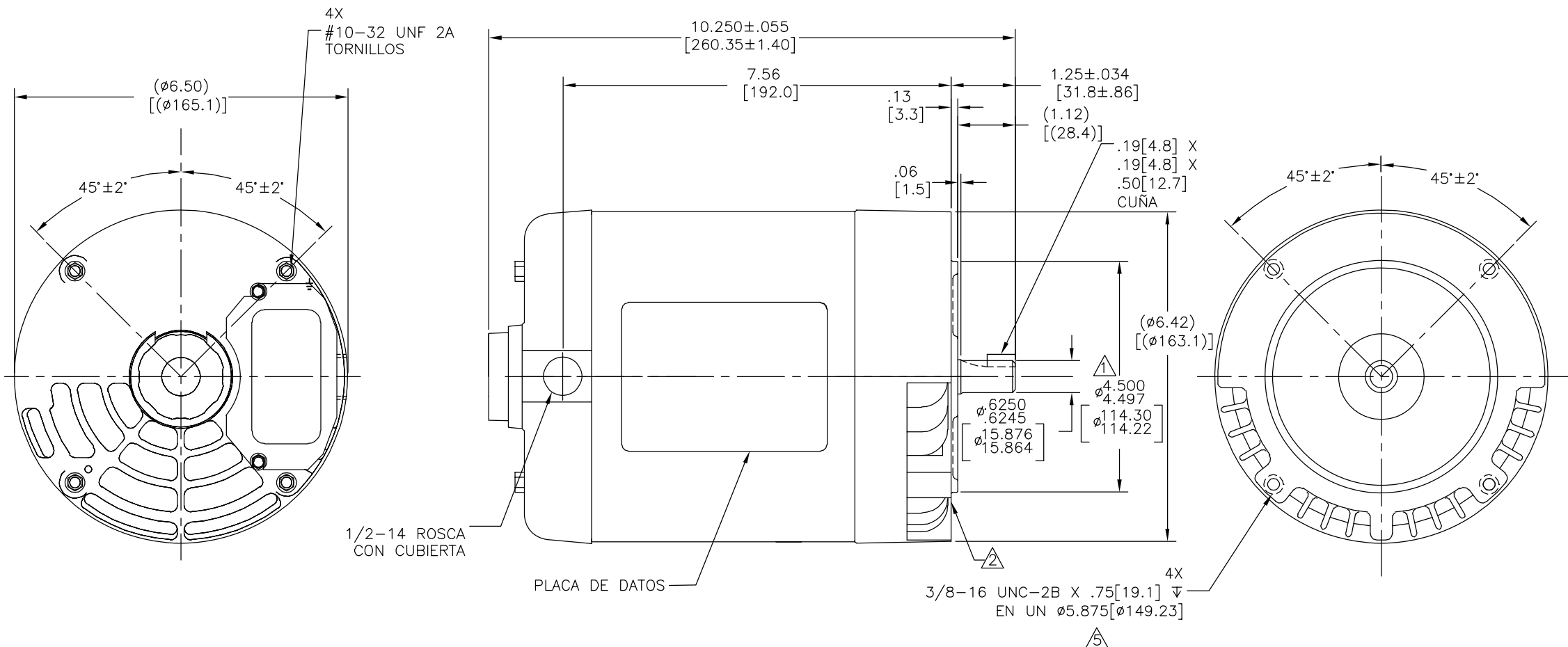


NOTES:

- ▲ PILOT DIAMETER IS CONCENTRIC WITH SHAFT & WITHIN .004[.10] T.I.R.
- ▲ FACE OF MOUNTING FLANGE IS PERPENDICULAR TO SHAFT & WITHIN .004[.10] T.I.R.
- 3. SHAFT RUNOUT NOT TO EXCEED .002[.05] T.I.R.
- 4. END PLAY NOT TO EXCEED .010[.25] MEASURED WITH NO THRUST.
- ▲ ∇ OF HOLES IN MOUNTING FLANGE ARE .75[19.1] FOR ALUMINIUM AND .63[16.0] FOR CAST IRON.

GEOMETRIC CHARACTERISTICS & SYMBOLS ▭ FLATNESS — STRAIGHTNESS ∠ ANGULARITY ⊥ PERPENDICULARITY (SQUARENESS) ∥ PARALLELISM ○ ROUNDNESS (CIRCULARITY) ∅ CYLINDRICITY ▽ PROFILE OF ANY SURFACE ∩ PROFILE OF ANY LINE ↗ RUNOUT ⊕ TRUE POSITION ⊙ CONCENTRICITY = SYMMETRY ASME Y14.5M 1994	UNLESS OTHERWISE SPECIFIED DIM. TOLERANCES ARE AS FOLLOWS: DIM. X XX XXX XXXX INCH ±.1 ±.02 ±.005 ±.0005 mm ±0.5 ±0.13 ±0.013 ANG. ±.50 DEG REMOVE BURRS & BREAK SHARP EDGES: INCH .003-.015 mm 0.1-0.4 CORNER FILLETS TO: INCH .020 mm 0.5 MACHINE SURFACES: INCH 125 mm 3.2 METRIC DIMS. SHOWN IN [BRACKETS]	DR BY:	R.RASCON	10-29-2010	REGAL-BELOIT CORPORATION
		APPD:	J.ORTEGA	10-29-2010	
		THIRD ANGLE PROJECTION		EDS DATE 11-11-2011 FORMAT REV G	SIZE C DWG NO H1047L
		CONFIDENTIAL: THIS DRAWING AND ITS INFORMATION ARE THE EXCLUSIVE AND CONFIDENTIAL PROPERTY OF REGAL-BELOIT CORPORATION AND ARE NOT TO BE DISCLOSED, DUPLICATED, DISTRIBUTED OR OTHERWISE USED WITHOUT THE WRITTEN CONSENT OF REGAL-BELOIT CORPORATION. -ALL RIGHTS RESERVED.			SCALE NONE SHEET 1

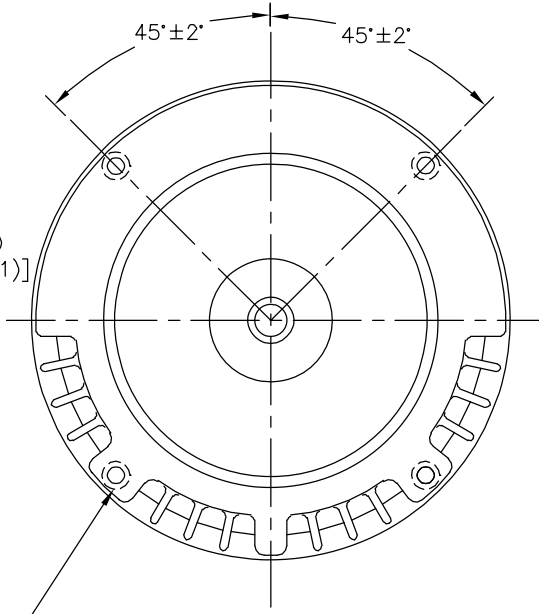
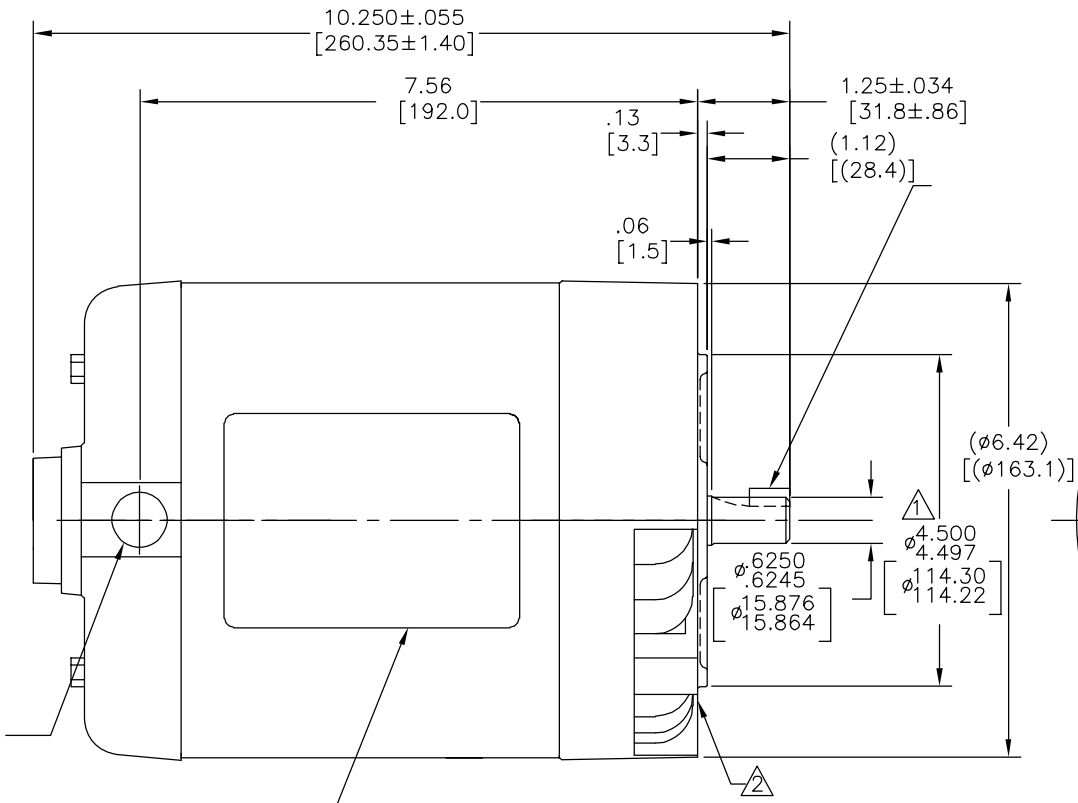
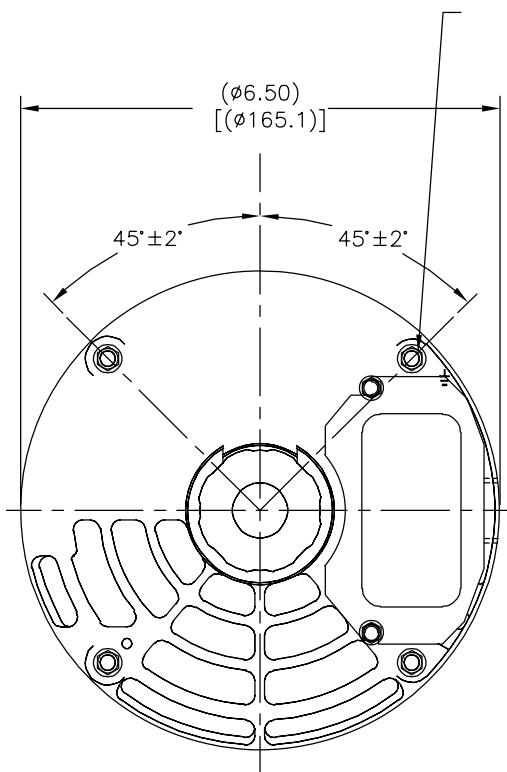
REVISION:	ECO	REVISADO POR:	F.NAVARRO	FECHA:	04-17-2012	APROBADO POR:	R.RASCON	FECHA:	04-17-2012
B	0025408								



- NOTAS:
- ⚠ EL DIAMETRO PILOTO ES CONCENTRICO CON LA ϕ DE LA FLECHA DENTRO DE .004[.10] L.T.I.
 - ⚠ LA CARA DE REBORDE DE MONTAJE ES PERPENDICULAR A LA ϕ DE LA FLECHA DENTRO DE .004[.10] L.T.I.
 - 3. OSCILACION DE FLECHA NO DEBE EXCEDER .002[.05] L.T.I.
 - 4. JUEGO AXIAL NO DEBE EXCEDER .010[.25] MEDIDO SIN ROSCA.
 - ⚠ ∇ DE ORIFICIOS DE MONTAJE EN REBORDE SON DE .75[19.1] PARA ALUMINIO Y .63[16.0] PARA HIERRO MOLDEADO.

CARACTERISTICAS DE GEOMETRIA Y SIMBOLOS ▽ PLANICIDAD — RECTITUD ∠ ANGULARIDAD ⊥ PERPENDICULARIDAD (A ESCUADRA) // PARALELISMO ○ REDONDEZ (CIRCULARIDAD) ∅ CILINDRICIDAD △ PERFIL DE CUALQUIER SUPERFICIE ∩ PERFIL DE CUALQUIER LINEA ↑ VARIACION ⊕ POSICION REAL ⊙ CONCENTRICIDAD = SIMETRIA	A MENOS QUE SE ESPECIFIQUE DE OTRA MANERA, LAS TOLERANCIAS DE LAS DIMS; SON LAS SIGUIENTES: PULG X XX XXX XXXX mm ±.1 ±.02 ±.005 ±.0005 mm ±0.5 ±0.13 ±0.013 ANG. ±.50 GRADOS ELIMINAR REBABAS Y ORILLAS FILOSAS DEL BORDE. PULG .003-.015 mm 0.1-0.4 FILETEAR ESQUINA: PULG .020 mm 0.5 MAQUINAR SUPERFICIES PULG 125 mm 3.2	DIBUJADO POR: R.RASCON	10-29-2010		DESCRIPCION: OUTLINE
		APROBADO POR: J.ORTEGA	10-29-2010		
ASME Y14.5M 1994 DIMS METRICAS MOSTRADAS [PARENTESIS]		FECHA EDS: 11-11-2011 REV. FORMATO: G	ESCALA: NONE	HOJA: 1	

版本	ECO	编制	日期	批准	日期
B	0025408	F.NAVARRO	04-17-2012	R.RASCON	04-17-2012



D
C
B
A

D
C
B
A



- 形位公差
- 平面度
- 直线度
- ∠ 倾斜度
- ⊥ 垂直度
- ∥ 平行度
- 圆度
- ⊘ 圆柱度
- ⌒ 面轮廓度
- 线轮廓度
- ⌒ 圆跳动
- ⊕ 位置度
- ⊙ 同轴度
- ≡ 对称度

ASME Y14.5M 1994

除另有注明
尺寸公差如下:
英寸 X XX XXX XXXX
毫米 ±.1 ±.02 ±.005 ±.0005
毫米 ±0.5 ±0.13 ±0.013
角度 ±.50 度
清理毛刺和尖棱
英寸 .003-.015 毫米 0.1-0.4
内圆角
英寸 .020 毫米 0.5
表面粗糙度
英制 125 米制 3.2
米制尺寸显示在 []

绘图:	R.RASCON	10-29-2010
批准:	J.ORTEGA	10-29-2010
第三角投影		图纸格式发布日期 11-11-2011 图纸格式版本 G
机密: 本图纸及相关信息所有权归REGAL-BELOIT CORPORATION。未经REGAL-BELOIT CORPORATION书面授权, 不得泄露、复制、传播或作其他用途。--版权所有		



名称	OUTLINE	
图幅	C	图号 H1047L
比例	NONE	页号 1

4

3

2

1