

4

3

2

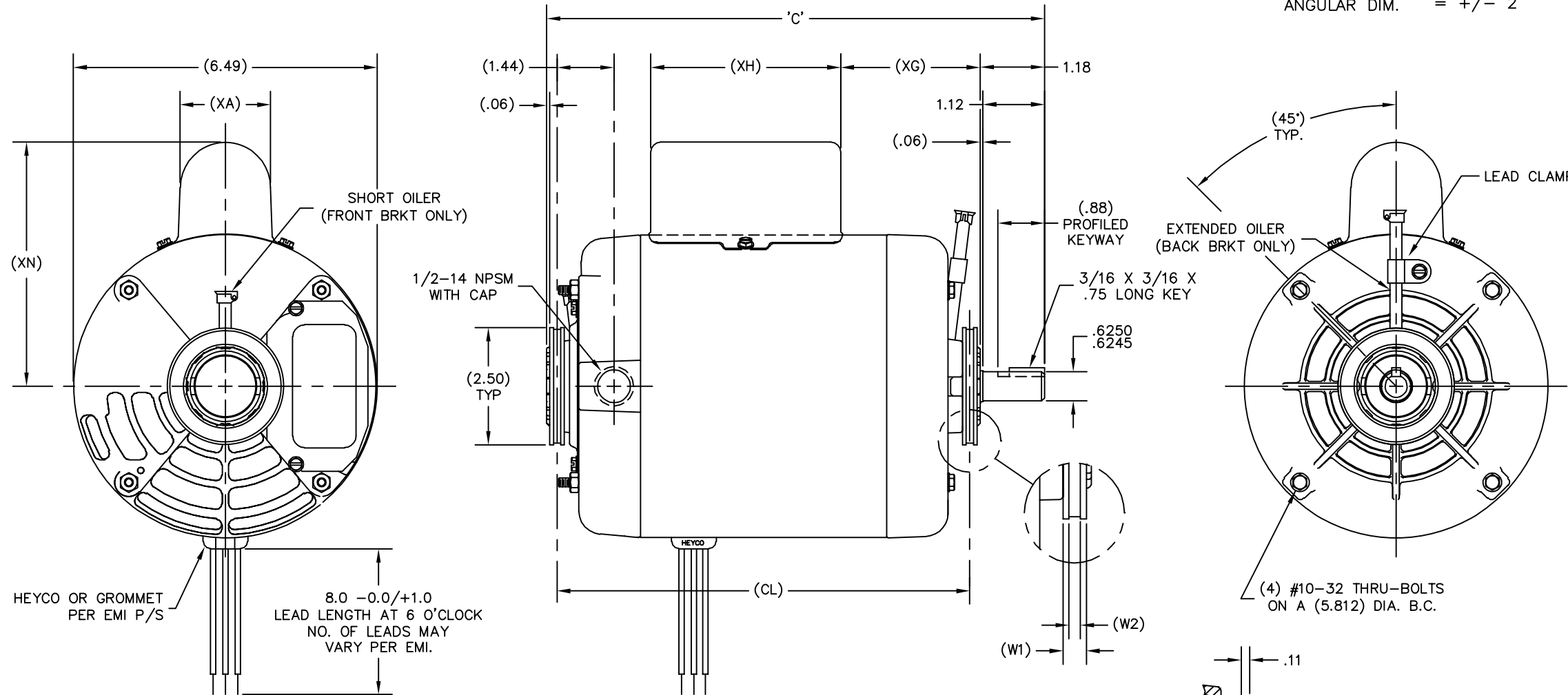
1

REV	ECO	REV BY	DATE	APPD	DATE
E	0025370	J.ZHU	04-18-2012	B.SHEN	04-18-2012

GROUP	TYPE	FRAME	"C"	(CL)	(W1)	(W2)	(XA)	(XG)	(XH)	(XN)	REMARKS
-01	CS	Y56Y	11.00	9.38	.310	.156	2.01	3.55	4.06	5.20	
-02	SC	Y56Y	10.94	9.38	.44	.16	-----	-----	-----	-----	CUSHION RINGS EXTEND .06 PAST BRACKET HUB
-03	SC	Y56Y	10.49	8.87	.44	.16	-----	-----	-----	-----	CUSHION RINGS EXTEND .06 PAST BRACKET HUB

ALL DIMENSIONS SHOWN IN PARENTHESIS ARE REFERENCE DIMENSIONS. ALL OTHER DIMENSIONS ARE TOLERANCED PER THE FOLLOWING CHART UNLESS OTHERWISE SPECIFIED.

"C" DIM. = +/- .055
 SHAFT EXT. = +/- .034
 EXTENDED THRU-BOLTS = +/- .050
 ANGULAR DIM. = +/- 2'



GEOMETRIC CHARACTERISTICS & SYMBOLS

- FLATNESS
- STRAIGHTNESS
- ∠ ANGULARITY
- ⊥ PERPENDICULARITY (SQUARENESS)
- // PARALLELISM
- ROUNDNESS (CIRCULARITY)
- ⊘ CYLINDRICITY
- △ PROFILE OF ANY SURFACE
- ∩ PROFILE OF ANY LINE
- ↑ RUNOUT
- ⊕ TRUE POSITION
- ⊙ CONCENTRICITY
- ≡ SYMMETRY

ASME Y14.5M 1994

UNLESS OTHERWISE SPECIFIED DIM. TOLERANCES ARE AS FOLLOWS:

INCH X XX XXX XXXX
 ±.1 ±.02 ±.005 ±.0005
 mm ±0.5 ±0.13 ±0.013

ANG. ±.50 DEG
 REMOVE BURRS & BREAK SHARP EDGES:
 INCH .003-.015 mm 0.1-0.4

CORNER FILLETS TO:
 INCH .020 mm 0.5

MACHINE SURFACES:
 INCH 125 mm 3.2

METRIC DIMS. SHOWN IN [BRACKETS]

DR BY: JAH 11-18-1987

APPD:

THIRD ANGLE PROJECTION

EDS DATE 11-11-2011
 FORMAT REV G

CONFIDENTIAL: THIS DRAWING AND ITS INFORMATION ARE THE EXCLUSIVE AND CONFIDENTIAL PROPERTY OF REGAL-BELOIT CORPORATION AND ARE NOT TO BE DISCLOSED, DUPLICATED, DISTRIBUTED OR OTHERWISE USED WITHOUT THE WRITTEN CONSENT OF REGAL-BELOIT CORPORATION. -ALL RIGHTS RESERVED.

REGAL-BELOIT CORPORATION

DESCRIPTION: **OUTLINE**

SIZE: C DWG NO: 175049

SCALE: NONE SHEET: 1

4

3

2

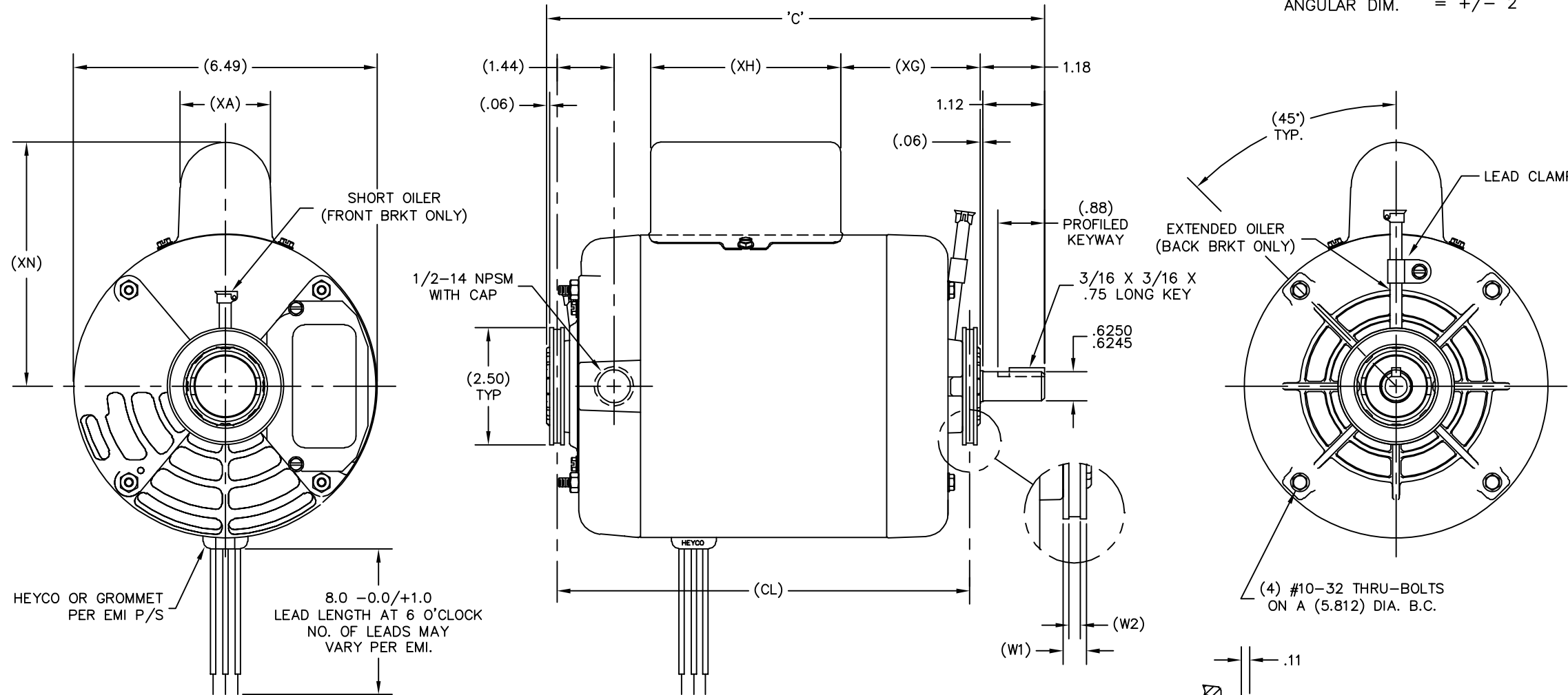
1

REVISION:	ECO	REVISADO POR:	FECHA:	APROBADO POR:	FECHA:
E	0025370	J.ZHU	04-18-2012	B.SHEN	04-18-2012

GROUP	TYPE	FRAME	"C"	(CL)	(W1)	(W2)	(XA)	(XG)	(XH)	(XN)	REMARKS
-01	CS	Y56Y	11.00	9.38	.310	.156	2.01	3.55	4.06	5.20	
-02	SC	Y56Y	10.94	9.38	.44	.16	-----	-----	-----	-----	CUSHION RINGS EXTEND .06 PAST BRACKET HUB
-03	SC	Y56Y	10.49	8.87	.44	.16	-----	-----	-----	-----	CUSHION RINGS EXTEND .06 PAST BRACKET HUB

ALL DIMENSIONS SHOWN IN PARENTHESIS ARE REFERENCE DIMENSIONS. ALL OTHER DIMENSIONS ARE TOLERANCED PER THE FOLLOWING CHART UNLESS OTHERWISE SPECIFIED.

"C" DIM. = +/- .055
 SHAFT EXT. = +/- .034
 EXTENDED THRU-BOLTS = +/- .050
 ANGULAR DIM. = +/- 2'



CARACTERISTICAS DE GEOMETRIA Y SIMBOLOS
 □ PLANICIDAD
 - RECTITUD
 < ANGULARIDAD
 ⊥ PERPENDICULARIDAD (A ESCUADRA)
 // PARALELISMO
 ○ REDONDEZ (CIRCULARIDAD)
 ∅ CILINDRICIDAD
 △ PERFIL DE CUALQUIER SUPERFICIE
 ∨ PERFIL DE CUALQUIER LINEA
 / VARIACION
 ⊕ POSICION REAL
 ⊙ CONCENTRICIDAD
 = SIMETRIA
 ASME Y14.5M 1994

A MENOS QUE SE ESPECIFIQUE DE OTRA MANERA, LAS TOLERANCIAS DE LAS DIMS; SON LAS SIGUIENTES:
 PULG ±.1 ±.02 ±.005 ±.0005
 mm ±0.5 ±0.13 ±0.013
 ANG. ± 50 GRADOS
 ELIMINAR REBABAS Y ORILLAS FILOSAS DEL BORDE.
 PULG .003-.015 mm 0.1-0.4
 FILETEAR ESQUINA: PULG .020 mm 0.5
 MAQUINAR SUPERFICIES
 PULG 125 mm .32
 DIMS METRICAS MOSTRADAS [PARENTESIS]

DIBUJADO POR: JAH 11-18-1987
 APROBADO POR: .
 TERCER ANGULO DE PROYECCION
 FECHA EDS: 11-11-2011
 REV. FORMATO: G
 CONFIDENCIAL: ESTE DIBUJO Y SU INFORMACION SON PROPIEDAD DE USO EXCLUSIVO Y CONFIDENCIAL DE REGAL-BELOIT CORPORATION. Y NO DEBERAN SER REVELADOS, DUPLICADOS, DISTRIBUIDOS O USARSE DE OTRA MANERA SIN EL CONSENTIMIENTO ESCRITO DE REGAL-BELOIT CORPORATION. -TODOS LOS DERECHOS RESERVADOS.

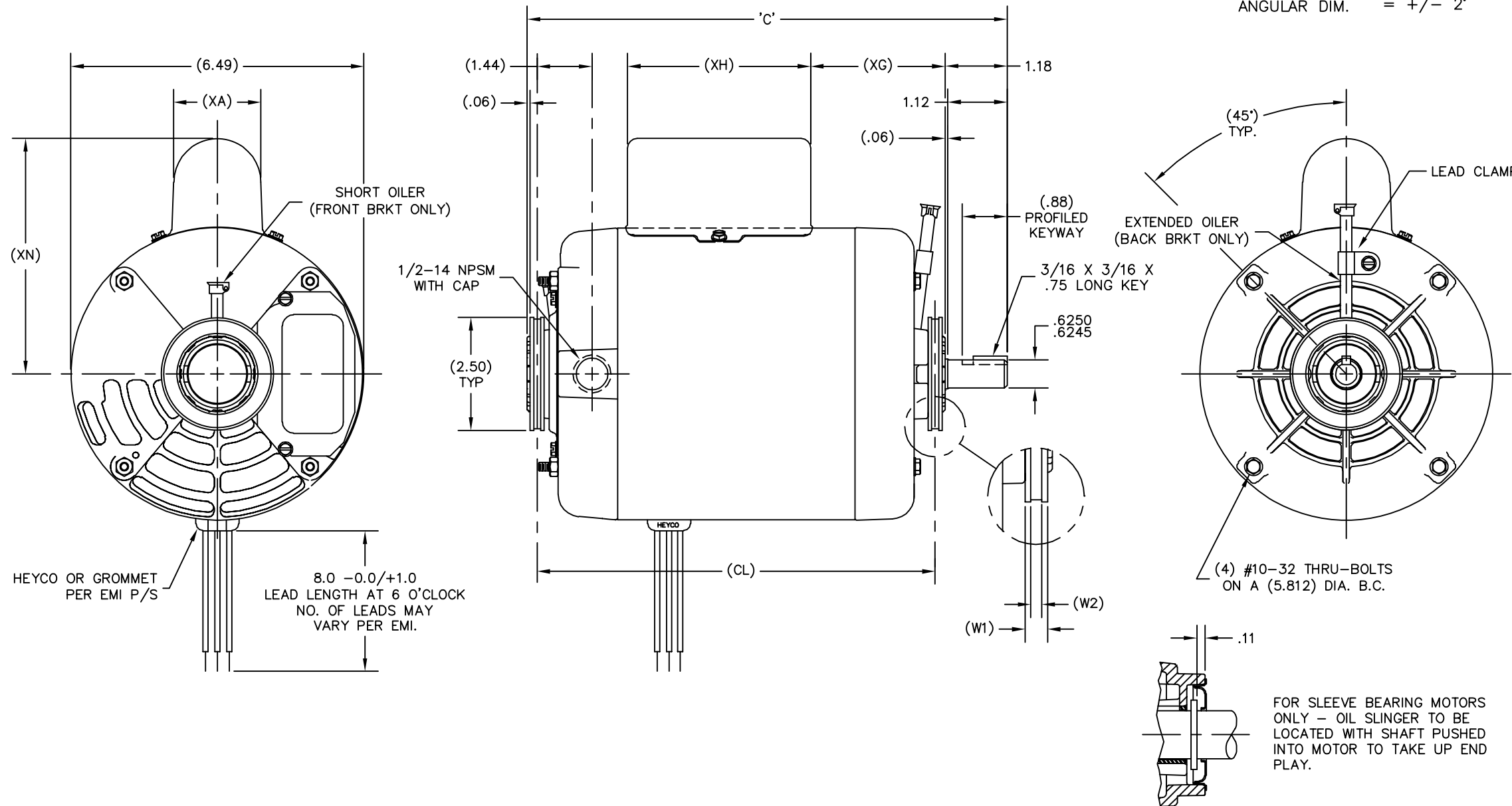
REGAL-BELOIT CORPORATION
 DESCRIPCION: OUTLINE
 TAMAÑO: C NUMERO DE DIBUJO: 175049
 ESCALA: NONE HOJA: 1

版本	ECO	编制	日期	批准	日期
E	0025370	J.ZHU	04-18-2012	B.SHEN	04-18-2012

GROUP	TYPE	FRAME	"C"	(CL)	(W1)	(W2)	(XA)	(XG)	(XH)	(XN)	REMARKS
-01	CS	Y56Y	11.00	9.38	.310	.156	2.01	3.55	4.06	5.20	
-02	SC	Y56Y	10.94	9.38	.44	.16	----	----	----	----	CUSHION RINGS EXTEND .06 PAST BRACKET HUB
-03	SC	Y56Y	10.49	8.87	.44	.16	----	----	----	----	CUSHION RINGS EXTEND .06 PAST BRACKET HUB

ALL DIMENSIONS SHOWN IN PARENTHESIS ARE REFERENCE DIMENSIONS. ALL OTHER DIMENSIONS ARE TOLERANCED PER THE FOLLOWING CHART UNLESS OTHERWISE SPECIFIED.

"C" DIM. = +/- .055
 SHAFT EXT. = +/- .034
 EXTENDED THRU-BOLTS = +/- .050
 ANGULAR DIM. = +/- 2'



FOR SLEEVE BEARING MOTORS ONLY - OIL SLINGER TO BE LOCATED WITH SHAFT PUSHED INTO MOTOR TO TAKE UP END PLAY.

形位公差	除另有注明
□ 平面度	尺寸公差如下:
— 直线度	英寸 X XX XXX XXXX
∠ 倾斜度	英寸 ±.1 ±.02 ±.005 ±.0005
⊥ 垂直度	毫米 ±0.5 ±0.13 ±0.013
// 平行度	角度 ±.50 度
○ 圆度	清理毛刺和尖棱
⊙ 圆柱度	英寸 .003-.015 毫米 0.1-0.4
△ 面轮廓度	内圆角
∩ 线轮廓度	英寸 .020 毫米 0.5
∧ 圆跳动	表面粗糙度
⊕ 位置度	英制 125 米制 3.2
⊙ 同轴度	米制尺寸显示在 []
≡ 对称度	

ASME Y14.5M 1994

绘图:	JAH	11-18-1987
批准:		
第三角投影	⊕	图纸格式发布日期 11-11-2011 图纸格式版本 G
机密: 本图纸及相关信息所有权归REGAL-BELOIT CORPORATION. 未经REGAL-BELOIT CORPORATION书面授权, 不得泄露、复制、传播或作其他用途。—版权所有		

名称		REGAL-BELOIT CORPORATION
图幅		C
图号		175049
比例	NONE	页号 1

名称		REGAL-BELOIT CORPORATION
图幅		C
图号		175049
比例	NONE	页号 1