

GENERAL INFORMATION:

SHAFT RUNOUT: .001[.025] T.I.R. PER INCH LENGTH OF EXTENSION

BEARINGS: BALL

MOUNTING POSITION: ALL ANGLE

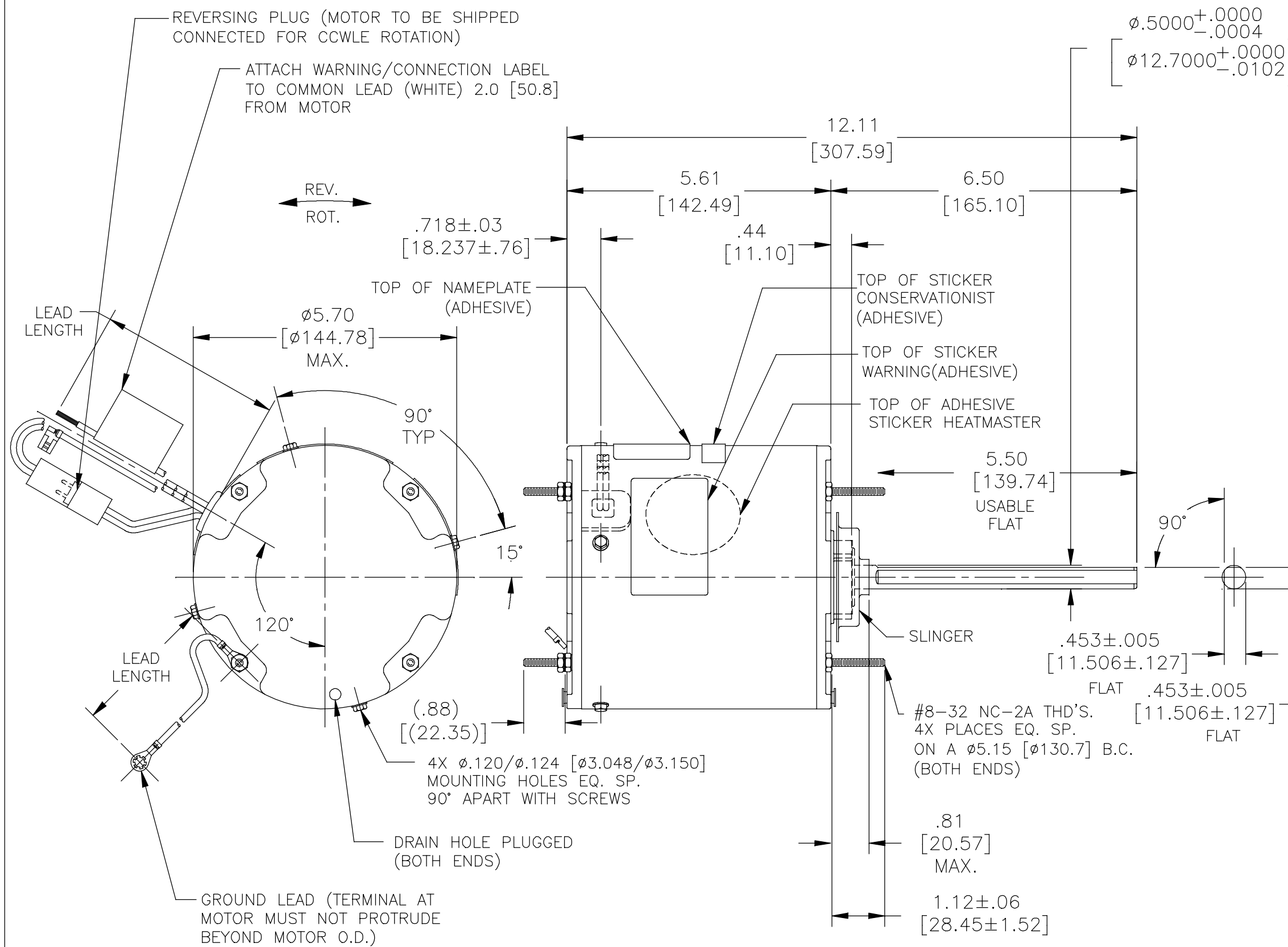
ELECTRICAL DATA:

OVERLOAD PROTECTOR: AUTOMATIC RESET (SENSATA 7AM 304)

LINE LEADS: NO. 18 GA., .06[1.52] THK. XLP 125°C INSUL.

REVERSING LEADS: NO. 18 GA., .03[.76] THK. XLP 125°C INSUL.

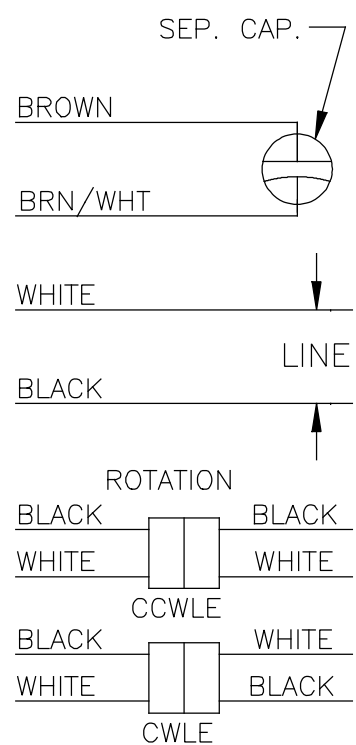
GROUND LEAD: NO. 18 GA., .03[.76] THK. (GREEN) INSUL.



NAMEPLATE DATA:

MODEL NO.: F48X92A01
 CUST. P/N: FEH1056SF
 HP: 1/2
 ROT.: REVERSIBLE
 RPM: 1075
 TYPE: UF
 FRAME: 48
 VOLTS: 460
 PH: 1
 AMPS: 1.5
 HZ: 60
 INS.: F
 AMB.: 70°C
 DUTY: AIR OVER
 CAP.: 10 MFD/370 V
 ENCL: ENCLOSED
 UL LOGO
 CSA LOGO
 THERMALLY PROTECTED

EXTERNAL CONNECTION DIAGRAM



614131-242

PERFORMANCE CURVE NO.	TORQUE @1075 RPM (25°C)	APPROVED SAMPLE	UL COMPONENT		CSA	
			FILE #	CCN #	FILE #	CLASS #
C32586	48.3 OZ. FT.	0601190A	E46412	PRGY2	LR43341	4211-01

COLOR	LENGTH	TERMINAL OR STRIP LENGTH
GREEN (GROUND)	12.0/13.0 [304.8/330.2]	#10 EYELET
BLACK/WHITE	3.0/5.0 [76.2/127.0]	REVERSING PLUG
BROWN	48.0/51.0 [1219.2/1295.4]	.25[6.35] FLAG
BROWN/WHITE	48.0/51.0 [1219.2/1295.4]	.25[6.35] FLAG
WHITE	48.0/51.0 [1219.2/1295.4]	.50[12.70] SKIN
BLACK	48.0/51.0 [1219.2/1295.4]	.50[12.70] SKIN

REGAL-BELOIT CORPORATION (RBC) PROVIDES TECHNICAL ASSISTANCE TO OUR CUSTOMERS IN SEVERAL AREAS. SINCE RBC DOES NOT RECEIVE ALL DATA CONCERNING THE USE AND APPLICATION OF THE MOTOR, THE SUITABILITY OF THE MOTOR FOR THE APPLICATION MUST BE DETERMINED BY THE CUSTOMER.

DIMENSIONS WITHOUT TOLERANCES ARE FOR REFERENCE ONLY.

MAIN FRAME - OLE	ENCLOSED
END FRAME - OLE	ENCLOSED
MAIN FRAME - LE	ENCLOSED
END FRAME - LE	ENCLOSED

NOTES:

- 1 ATTACH INSTRUCTION SHEET 69P9-3 ONTO SHAFT APPROX. 1.0[25] FROM WATER SLINGER
- 2 4X EXTRA HEX NUTS 7555A19H01 ON LEAD END (FINGER TIGHT)(FOR MM1 PLANT)
- 3 4X SCREWS 615982-001 & 4X HEX NUTS 7555A19H01 TO BE PUT IN A POLYBAG & HANG ON SHAFT (ONLY FOR CHANGZHOU PLANT)

ENCLOSURE

CUSTOMER	DISTRIBUTION SERVICE
----------	----------------------

DRAWING REVISION	REVISION BY	DATE	TOLERANCES UNLESS OTHERWISE SPECIFIED
A	SELENA.YAO	01-09-2018	DEC. INCH mm ANGLE
ECO	APPROVED BY FRANK.JIN	01-09-2018	.XX ±0.1 [±2.5] ±0.5°
ECO-0137490			.XX ±0.02 [±0.51]
NEW RELEASE			.XXX ±0.005 [±0.127]
			.XXXX ±0.0005 [±0.0127]
			REMOVE BURRS & BREAK SHARP EDGES .003/.015 [0.076/.381]
			CORNER FILLETS .02 [0.51]
			MACHINED SURFACES 125/INCH 32/mm

THIRD ANGLE PROJECTION	SIZE DWG NO	SHEET
C	FEH1056SF	1

REGAL™	Regal Beloit America, Inc.
DESCRIPTION	MODEL-RFHP-48FR OUTLINE
MATERIAL	