

REV	ECO	REV BY	DATE	APPD	DATE
E	0025527	J.AGUILERA	04-24-2012	R.RASCON	04-24-2012

GENERAL INFORMATION:

SHAFT RUNOUT: .001 [.03] T.I.R. PER INCH LENGTH OF EXTENSION

BEARINGS: BALL

MOUNTING POSITION: ALL ANGLE

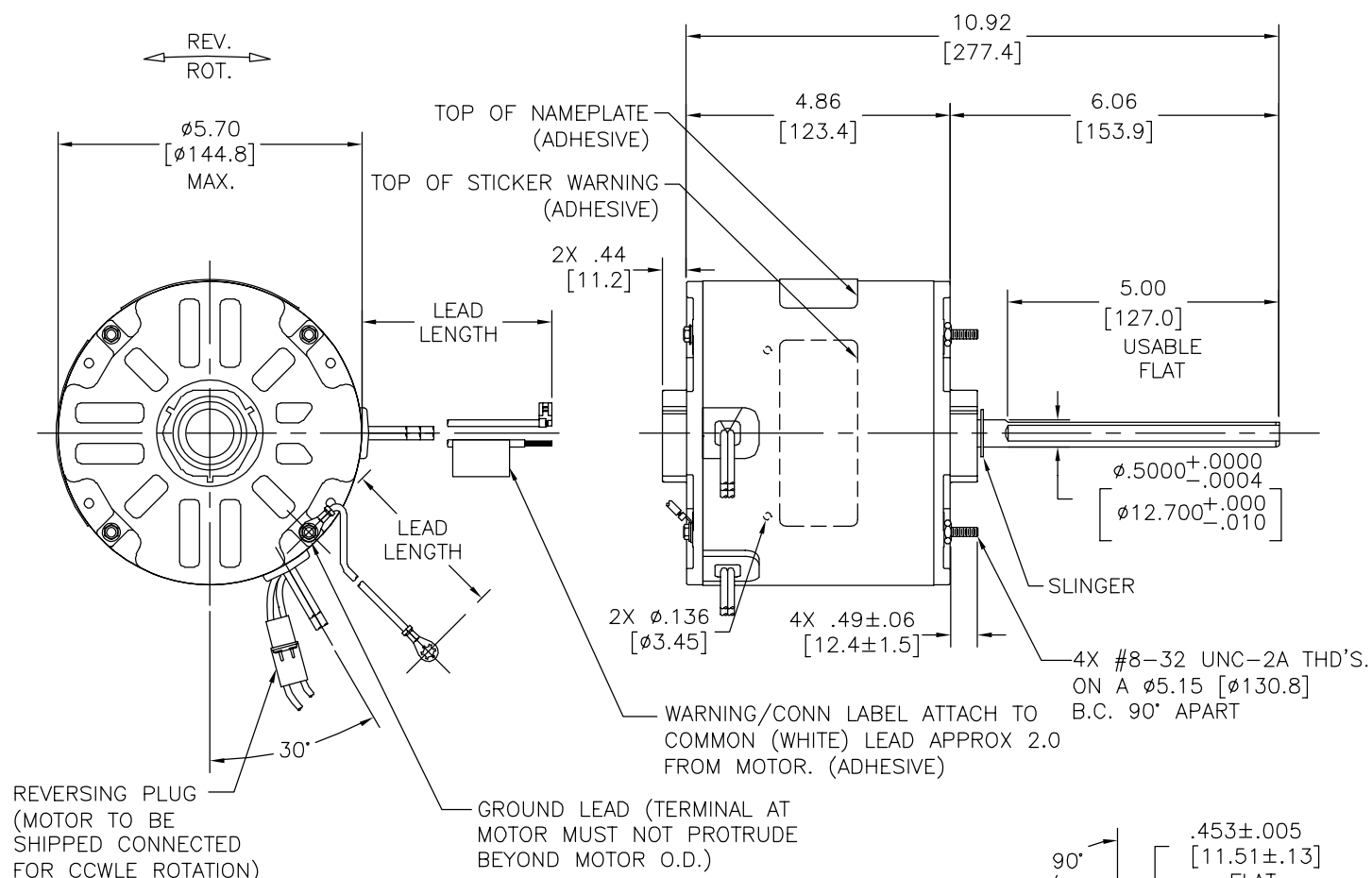
ELECTRICAL DATA:

OVERLOAD PROTECTOR: AUTOMATIC RESET (T.I. 7AM 036)

LEADS: NO. 18 GA., .06 [1.5] THK. PVC 105°C INSUL.

REVERSING LEADS: NO. 18 GA., .03 [.8] THK. 125' INSUL.

GROUND LEAD: NO. 16 GA., .03 [.8] THK. (GREEN/YELLOW) INSUL.



REVERSING PLUG (MOTOR TO BE SHIPPED CONNECTED FOR CCWLE ROTATION)

GROUND LEAD (TERMINAL AT MOTOR MUST NOT PROTRUDE BEYOND MOTOR O.D.)

GRN/YEL (GRD)	11.0/13.0 [279/330]	#10 EYELET
WHITE/BLACK	4.0/6.0 [102/152]	REVERSING PLUG
BROWN/WHITE	26.0/28.0 [660/711]	.25 [6.4] FLAG
BROWN	26.0/28.0 [660/711]	.25 [6.4] FLAG
RED	26.0/28.0 [660/711]	.50 [12.7] STRIP
PURPLE	26.0/28.0 [660/711]	.50 [12.7] STRIP
BLACK	26.0/28.0 [660/711]	.50 [12.7] STRIP
WHITE	26.0/28.0 [660/711]	.50 [12.7] STRIP
COLOR	LENGTH	TERMINAL OR STRIP LENGTH

NOTES:
 1 CONDUIT BOX 52P7468-1-E308
 2 COVERS 46P93-1-E308
 1 GASKET 24P75-1
 4 SCREWS 21P258-25
 TO BE SHIPPED SEPARATE IN EACH CARTON WITH MOTOR.

MAIN FRAME - OLE	ENCLOSED
END FRAME - OLE	ENCLOSED
MAIN FRAME - LE	ENCLOSED
END FRAME - LE	OPEN

CUSTOMER	DISTRIBUTION SERVICES
----------	-----------------------

NAMEPLATE DATA:	EXTERNAL CONNECTION DIAGRAM
MODEL NO.: F48Z69A01 CUST. P/N: 782A HP: 1/4 ROT.: REVERSIBLE RPM: 1625/2 SPD TYPE: UF FRAME: 48Y VOLTS: 460 PH: 1 AMPS: 0.74/0.58 HZ: 60 INS.: B AMB.: 60° C DUTY: AIR OVER CAP.: 5 MFD/370 V ENCL: SEMI-ENCL UL LOGO CSA LOGO THERMALLY PROTECTED	

PERFORMANCE CURVE NO.	TORQUE @ 1625 RPM (25°C)	APPROVED SAMPLE	UL COMPONENT	CSA
C32724	16.1 OZ. FT.	0604338B	FILE # CCN # FILE # CLASS #	

GEOMETRIC CHARACTERISTICS & SYMBOLS

- FLATNESS
- STRAIGHTNESS
- ∠ ANGULARITY
- ⊥ PERPENDICULARITY (SQUARENESS)
- ∥ PARALLELISM
- ROUNDNESS (CIRCULARITY)
- ∅ CYLINDRICITY
- △ PROFILE OF ANY SURFACE
- ∩ PROFILE OF ANY LINE
- ↗ RUNOUT
- ⊕ TRUE POSITION
- ◎ CONCENTRICITY
- ≡ SYMMETRY

ASME Y14.5M 1994

REGAL-BELOIT CORPORATION (RBC) PROVIDES TECHNICAL ASSISTANCE TO OUR CUSTOMERS IN SEVERAL AREAS. SINCE RBC DOES NOT RECEIVE ALL DATA CONCERNING THE USE AND APPLICATION OF THE MOTOR, THE SUITABILITY OF THE MOTOR FOR THE APPLICATION MUST BE DETERMINED BY THE CUSTOMER.

DIMENSIONS WITHOUT TOLERANCES ARE FOR REFERENCE ONLY.

DR BY: RALF. CHEN 07-04-2007

APPD:

THIRD ANGLE PROJECTION

EDS DATE 11-11-2011
FORMAT REV G

CONFIDENTIAL: THIS DRAWING AND ITS INFORMATION ARE THE EXCLUSIVE AND CONFIDENTIAL PROPERTY OF REGAL-BELOIT CORPORATION AND ARE NOT TO BE DISCLOSED, DUPLICATED, DISTRIBUTED OR OTHERWISE USED WITHOUT THE WRITTEN CONSENT OF REGAL-BELOIT CORPORATION. -ALL RIGHTS RESERVED.

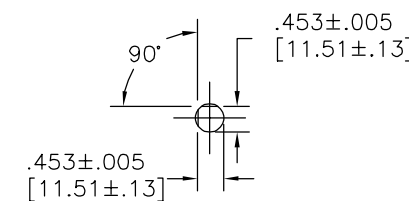
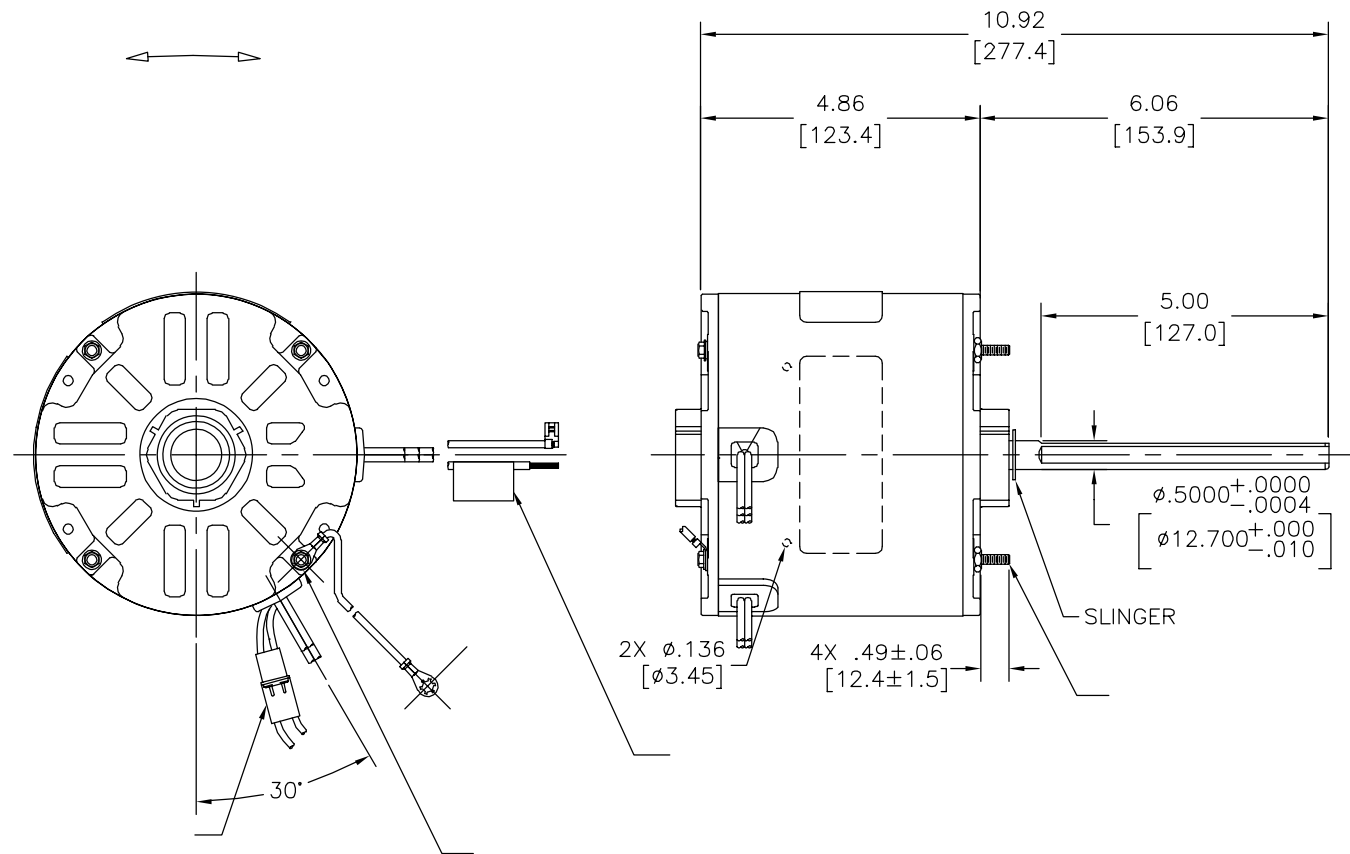
REGAL-BELOIT CORPORATION

DESCRIPTION: MODEL-RFHP-48FR OUTLINE

SIZE: C DWG NO: F48Z69A01

SCALE: NONE SHEET: 1

REVISION:	ECO	REVISADO POR:	FECHA:	APROBADO POR:	FECHA:
E	0025527	J.AGUILERA	04-24-2012	R.RASCON	04-24-2012



- NOTES:
- 1 CONDUIT BOX 52P7468-1-E308
 - 2 COVERS 46P93-1-E308
 - 1 GASKET 24P75-1
 - 4 SCREWS 21P258-25
- TO BE SHIPPED SEPARATE IN EACH CARTON WITH MOTOR.

CUERPO PPAL. -OLE	
TAPA FINAL- OLE	
CUERPO PPAL. -LE	
TAPA FINAL - LE	

	11.0/13.0	
	[279/330]	
	4.0/6.0	
	[102/152]	
	26.0/28.0	.25 [6.4] FLAG
	[660/711]	
	26.0/28.0	.25 [6.4] FLAG
	[660/711]	
	26.0/28.0	.50 [12.7] STRIP
	[660/711]	
	26.0/28.0	.50 [12.7] STRIP
	[660/711]	
	26.0/28.0	.50 [12.7] STRIP
	[660/711]	
	26.0/28.0	.50 [12.7] STRIP
	[660/711]	
COLOR	LONGITUD	TERMIANL O LONGITUD DE DESFORRE

F48Z69A01 782A	BROWN SEP. CAP.
1/4 REVERSIBLE 1625/2 SPD UF 48Y 460	BRN/WHT WHITE BLACK HI LINE PURPLE RED HI SPEED
1 0.74/0.58	WHITE BLACK PURPLE ILINE RED LO
60 B 60° C AIR OVER 5 MFD/370 V SEMI-ENCL	BLACK ROTATION BLACK WHITE CWLE WHITE BLACK CWLE WHITE WHITE CWLE BLACK

614131-349

CURVAS DE FUNCIONAMIENTO	TORSION @ 1625 RPM (25°C)	MUESTRA APROVADA	COMPONENTE UL	CSA
C32724	16.1 OZ. FT.	0604338B	#ARCHIVO CCN #	#ARCHIVO #CLASE
			E46412 PRGY2 LR43341	4211-01

CARACTERISTICAS DE GEOMETRIA Y SIMBOLOS

- ∠ PLANICIDAD
- RECTITUD
- ∠ ANGULARIDAD
- ⊥ PERPENDICULARIDAD (A ESCUADRA)
- // PARALELISMO
- REDONDEZ (CIRCULARIDAD)
- ∅ CILINDRICIDAD
- △ PERFIL DE CUALQUIER SUPERFICIE
- ∩ PERFIL DE CUALQUIER LINEA
- ∧ VARIACION
- ⊕ POSICION REAL
- ◎ CONCENTRICIDAD
- = SIMETRIA

ASME Y14.5M 1994

REGAL-BELOIT CORPORATION (RBC) PROVEE ASISTENCIA TECNICA A NUESTROS CLIENTES EN VARIAS AREAS. DESDE QUE RBC NO RECIBE TODOS LOS DATOS EN RELACION AL USO Y A LA APLICACION DEL MOTOR, LA APLICACION ADECUADA DEL MOTOR DEBE SER DETERMINADA POR EL CLIENTE.

DIMENSIONES SIN TOLERANCIA SON DE REFERENCIA SOLAMENTE

DIBUJADO POR: RALF. CHEN 07-04-2007

APROBADO POR:

TERCER ANGULO DE PROYECCION

FECHA EDS: 11-11-2011
REV. FORMATO: G

CONFIDENCIAL: ESTE DIBUJO Y SU INFORMACION SON PROPIEDAD DE USO EXCLUSIVO Y CONFIDENCIAL DE REGAL-BELOIT CORPORATION. Y NO DEBERAN SER REVELADOS, DUPLICADOS, DISTRIBUIDOS O USARSE DE OTRA MANERA SIN EL CONSENTIMIENTO ESCRITO DE REGAL-BELOIT CORPORATION. -TODOS LOS DERECHOS RESERVADOS.

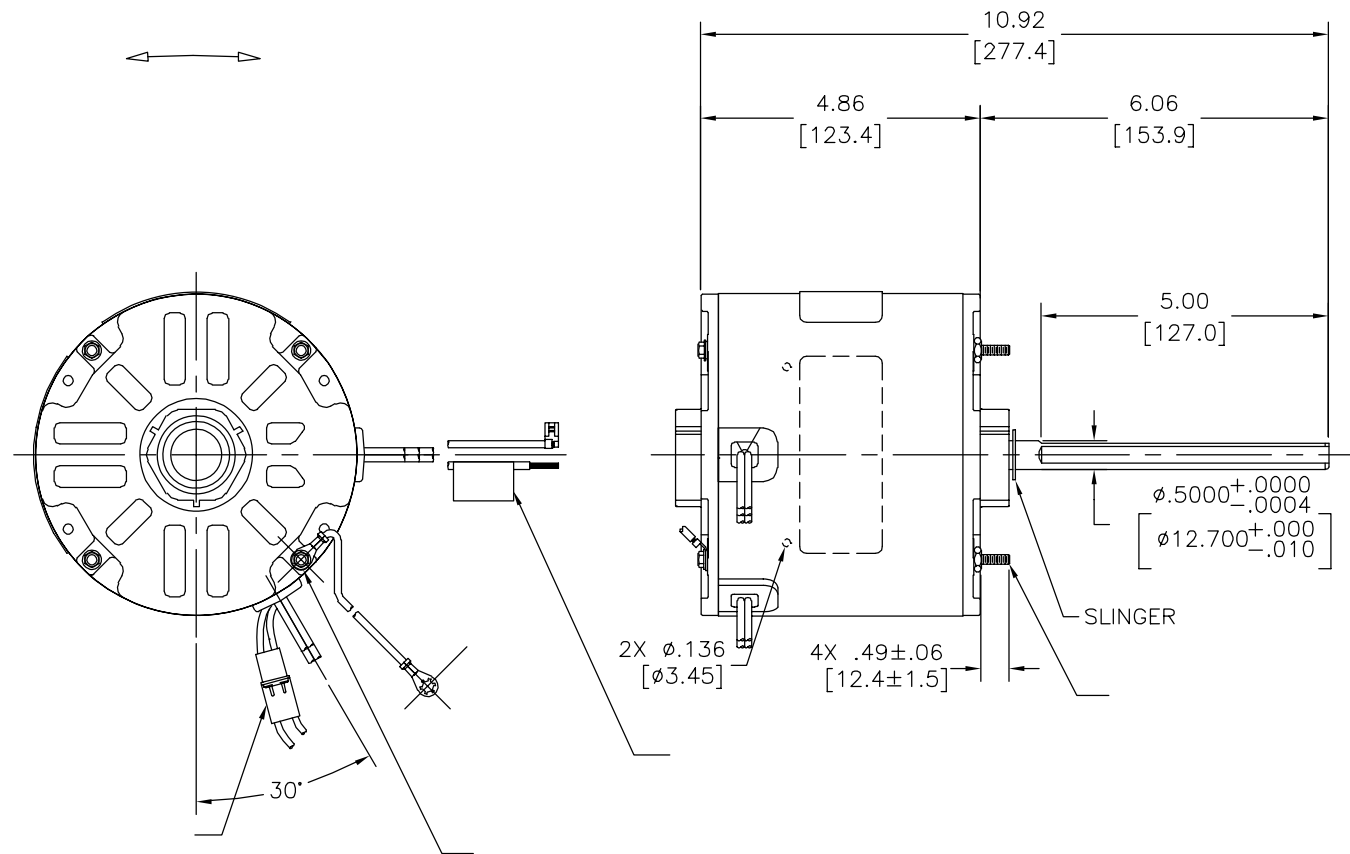
REGAL-BELOIT CORPORATION

DESCRIPCION: MODEL-RFHP-48FR OUTLINE

TAMAÑO: C NUMERO DE DIBUJO: F48Z69A01

ESCALA: NONE HOJA: 1

版本	ECO	编制	日期	批准	日期
E	0025527	J.AGUILERA	04-24-2012	R.RASCON	04-24-2012



	11.0/13.0	
	[279/330]	
	4.0/6.0	
	[102/152]	
	26.0/28.0	.25 [6.4] FLAG
	[660/711]	
	26.0/28.0	.25 [6.4] FLAG
	[660/711]	
	26.0/28.0	.50 [12.7] STRIP
	[660/711]	
	26.0/28.0	.50 [12.7] STRIP
	[660/711]	
	26.0/28.0	.50 [12.7] STRIP
	[660/711]	
	26.0/28.0	.50 [12.7] STRIP
	[660/711]	

NOTES:
 1 CONDUIT BOX 52P7468-1-E308
 2 COVERS 46P93-1-E308
 1 GASKET 24P75-1
 4 SCREWS 21P258-25
 TO BE SHIPPED SEPARATE IN EACH CARTON WITH MOTOR.

F48Z69A01 782A	BROWN SEP. CAP.
1/4 REVERSIBLE 1625/2 SPD UF 48Y 460	BRN/WHT WHITE BLACK HI LINE PURPLE RED HI SPEED
1 0.74/0.58 60 B 60° C AIR OVER 5 MFD/370 V SEMI-ENCL	WHITE BLACK PURPLE ILINE RED LO LOW SPEED
	BLACK ROTATION BLACK WHITE CCWLE WHITE BLACK CWLE WHITE WHITE CWLE BLACK

614131-349

					CCN #	CSA
C32724	16.1 OZ. FT.	0604338B	E46412	PRGY2	LR43341	4211-01

形位公差
 □ 平面度
 — 直线度
 < 倾斜度
 ⊥ 垂直度
 // 平行度
 ○ 圆度
 ⊙ 圆柱度
 ⊖ 面轮廓度
 ⊕ 线轮廓度
 ↗ 圆跳动
 ⊕ 位置度
 ⊙ 同轴度
 ≡ 对称度

ASME Y14.5M 1994

REGAL-BELOIT CORPORATION (RBC) 在个别领域为客户提供技术支持。鉴于RBC未收到任何涉及电机使用和应用环境的数据，电机的适用性由客户自己决定。

未注公差尺寸仅供参考。

绘图: RALF. CHEN 07-04-2007
 批准:
 第三角投影
 机密: 本图纸及相关信息所有权归REGAL-BELOIT CORPORATION。未经REGAL-BELOIT CORPORATION书面授权, 不得泄露、复制、传播或作其他用途。一版权所有

名称: MODEL-RFHP-48FR OUTLINE
 图幅: C 图号: F48Z69A01
 比例: NONE 页号: 1