

4

3

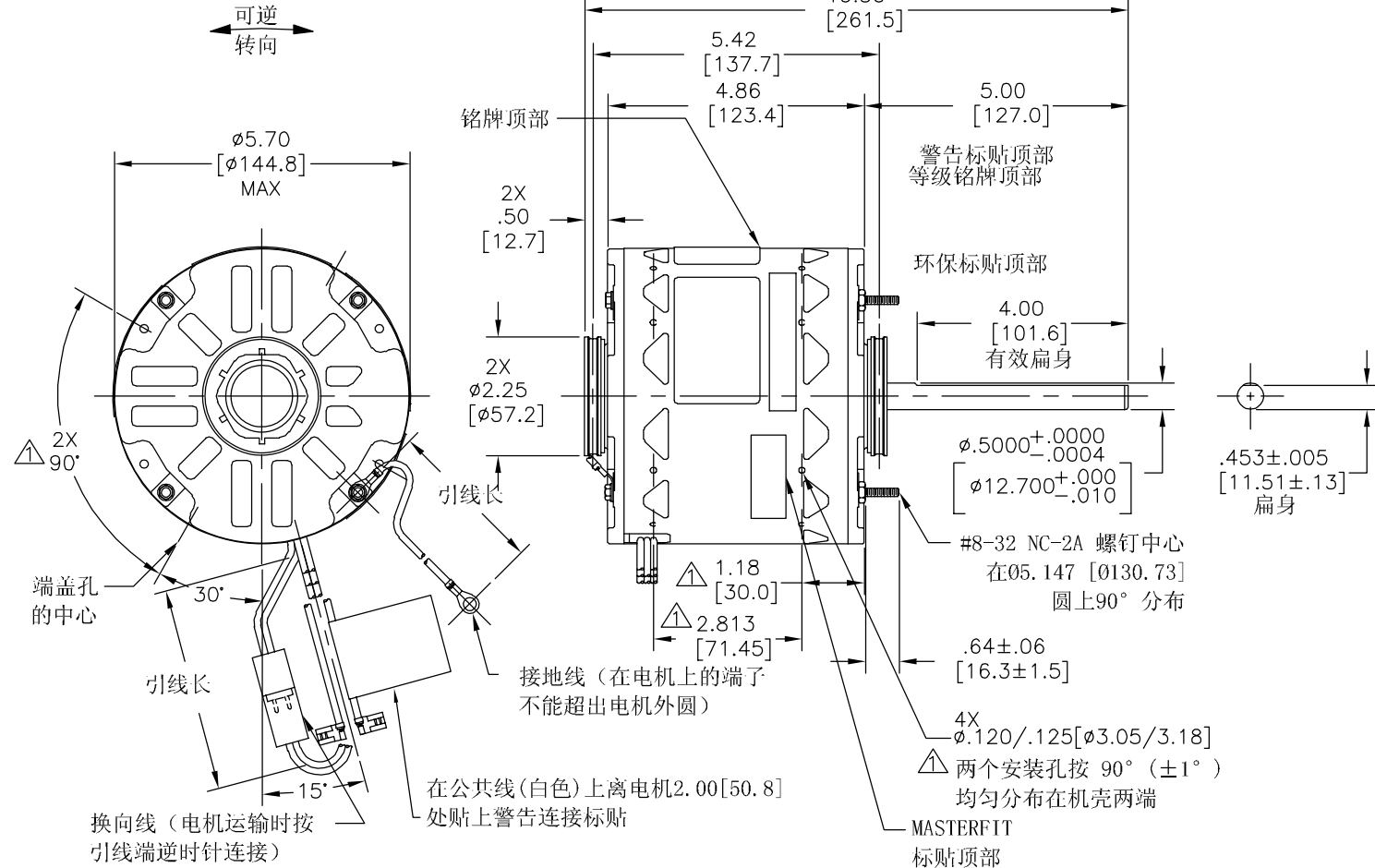
2

1

版本	ECO	编制	日期	批准	日期
A	0030326	J.M.RAMIREZ	02-08-2013	S.JIMENEZ	02-08-2013

总要求:

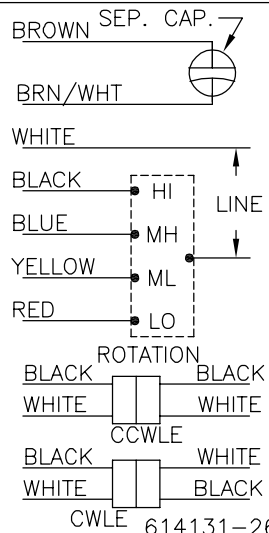
- 轴跳动: .001 [.03] (外伸轴)
- 轴承: 球轴承
- 安装位置: 水平
- 电气数据:
- 过载保护: 自动复位 (T. I. 7AM 036)
- 引线: 18 GA., .03 [.8] 厚. 125° C XLP 绝缘
- 换向引线: 18 GA., .03 [.8] 厚. 125° C XLP 绝缘
- 接地线: 18 GA., .03 [.8] 厚. (绿色) 绝缘



铭牌数据

外部连接详图

MODEL NO.: F48T75A01  
 CUST. P/N: [ ]  
 HP: 3/4 MAX.  
 ROT.: REVERSIBLE  
 RPM: 1075/4 SPD.  
 TYPE: UF  
 FRAME: 48Y  
 VOLTS: 208-230  
 PH: 1  
 AMPS: 4.0 MAX.  
 HZ: 60  
 INS.: B  
 AMB.: 40° C  
 DUTY: AIR OVER  
 CAP.: 10 MFD/370 V  
 ENCL: OPEN  
 UL LOGO  
 CSA LOGO  
 THERMALLY PROTECTED



绿色 (接地)	9.0/11.0 [229/279]	.25 [6.4] 环形端子
黑色/白色	3.0/5.0 [76/127]	回形插
棕色	36.5/39.5 [927/1003]	.25 [6.4] 旗形插
棕色/白色	36.5/39.5 [927/1003]	.25 [6.4] 旗形插
红色	36.5/39.5 [927/1003]	.25 [6.4] 旗形插
黄色	36.5/39.5 [927/1003]	.25 [6.4] 旗形插
蓝色	36.5/39.5 [927/1003]	.25 [6.4] 旗形插
黑色	36.5/39.5 [927/1003]	.25 [6.4] 旗形插
白色	36.5/39.5 [927/1003]	.25 [6.4] 旗形插
颜色	长度	端子或剥线长度

技术要求:

- 表示重要特性。
- 4个开口环参考615035, 8个615982-001 螺钉装在塑料袋中和电机一起装运。
- 分销电机号: FD6001  
GRAINGER电机号: 4ME28

非引线端机壳	开放
非引线端端盖	开放
引线端机壳	开放
引线端端盖	开放

用户 DISTRIBUTION SERVICE

性能曲线编号	转矩在107RPM (25° C)	批准样品	UL部件			
C32037	57.2 OZ. FT.	0143718A	文件号	指南	文件号	指南
			E46412	PRGY2	LR43341	4211-01

- 形位公差
- 平面度
- 直线度
- ∠ 倾斜度
- ⊥ 垂直度
- // 平行度
- 圆度
- ⊘ 圆柱度
- ⊙ 面轮廓度
- ⌒ 线轮廓度
- ⊖ 圆跳动
- ⊕ 位置度
- ⊙ 同轴度
- ≡ 对称度

ASME Y14.5M 1994

REGAL-BELOIT CORPORATION (RBC) 在个别领域为客户 提供技术支持。鉴于RBC 未收到任何涉及电机使用和 应用环境的数据, 电机的适用性 由客户自己决定。

未注公差尺寸仅供参考。

绘图:	J.M.RAMIREZ	02-08-2013
批准:	CH.REYNOLDS	02-08-2013
第三角投影	⊕	图纸格式发布日期 02-22-2008 图纸格式版本 G
机密:	本图纸及相关信息所有权归REGAL-BELOIT CORPORATION。 未经REGAL-BELOIT CORPORATION书面授权, 不得泄露、 复制、传播或作其他用途。—版权所有	

名称: **REGAL-BELOIT CORPORATION**

MODEL-RFHP-48FR  
OUTLINE

图幅: C 图号: FD6001

比例: NONE 页号: 1

4

3

2

1

REV	ECO	REV BY	DATE	APPD	DATE
A	0030326	J.M.RAMIREZ	02-08-2013	S.JIMENEZ	02-08-2013

**GENERAL INFORMATION:**

SHAFT RUNOUT: .001[.03] T.I.R. PER INCH LENGTH OF EXTENSION

BEARINGS: BALL

MOUNTING POSITION: HORIZONTAL

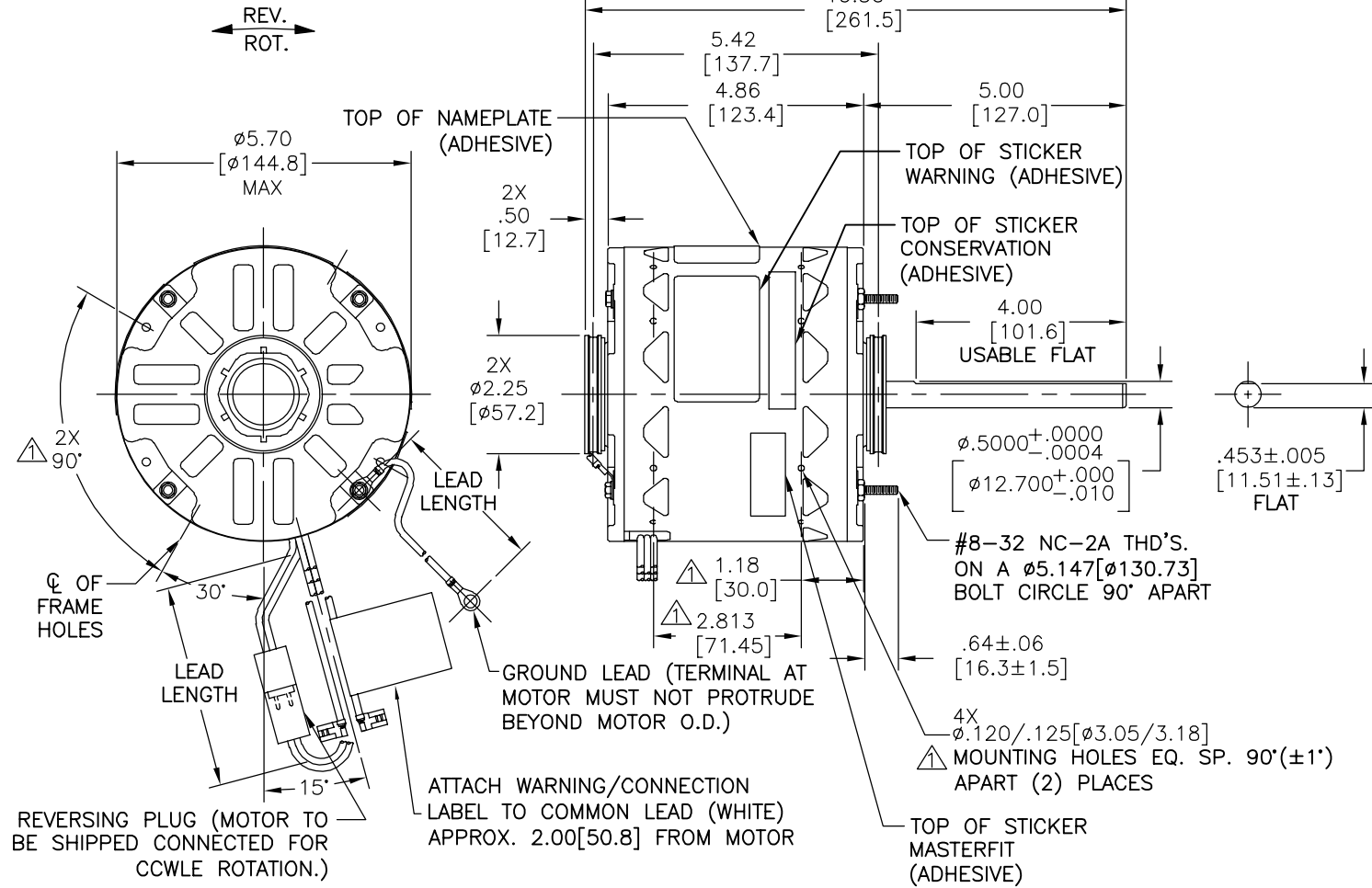
**ELECTRICAL DATA:**

OVERLOAD PROTECTOR: AUTOMATIC RESET (SENSATA 7AM 036)

LINE LEADS: NO. 18 GA., .03[.8] THK. XLP 125°C INSUL.

REVERSING PLUGS: NO. 18 GA., .03[.8] THK. XLP 125°C INSUL.

GROUND LEAD: NO. 18 GA., .03[.8] THK. (GREEN) INSUL.



GREEN (GROUND)	9.0/11.0 [229/279]	.25[6.4] RING
BLACK/WHITE	3.0/5.0 [76/127]	REVERSING PLUG
BROWN	36.5/39.5 [927/1003]	.25[6.4] FLAG
BROWN/WHITE	36.5/39.5 [927/1003]	.25[6.4] FLAG
RED	36.5/39.5 [927/1003]	.25[6.4] FLAG
YELLOW	36.5/39.5 [927/1003]	.25[6.4] FLAG
BLUE	36.5/39.5 [927/1003]	.25[6.4] FLAG
BLACK	36.5/39.5 [927/1003]	.25[6.4] FLAG
WHITE	36.5/39.5 [927/1003]	.25[6.4] FLAG
COLOR	LENGTH	TERMINAL OR STRIP LENGTH

- NOTE:
- ▲ DENOTES CRITICAL CHARACTERISTICS
  - 2. 4X SPLIT RING ADAPTOR 615035, 8X SCREWS 615982-001 TO BE PUT IN A POLYBAG & BE PACKED WITH EACH MOTOR
  - 3. DISTRIBUTION PART NUMBER: FD6001 GRAINGER PART NUMBER: 4ME28

MAIN FRAME - OLE	OPEN
END FRAME - OLE	OPEN
MAIN FRAME - LE	OPEN
END FRAME - LE	OPEN

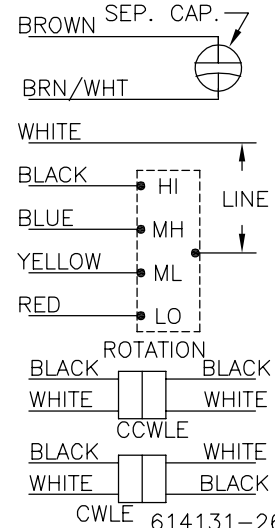
CUSTOMER	DISTRIBUTION SERVICE
----------	----------------------

**NAMEPLATE DATA:**

MODEL NO.: F48T75A01  
 CUST. P/N: [ ]  
 HP: 3/4 MAX.  
 ROT.: REVERSIBLE  
 RPM: 1075/4 SPD.  
 TYPE: UF  
 FRAME: 48Y  
 VOLTS: 208-230  
 PH: 1  
 AMPS: 4.0 MAX.  
 HZ: 60  
 INS.: B  
 AMB.: 40° C  
 DUTY: AIR OVER  
 CAP.: 10 MFD/370 V  
 ENCL: OPEN  
 UL LOGO  
 CSA LOGO  
 THERMALLY PROTECTED

SEE NOTE 3

**EXTERNAL CONNECTION DIAGRAM**



PERFORMANCE CURVE NO.	TORQUE @107 RPM (25°C)	APPROVED SAMPLE	UL COMPONENT		CSA	
C32037	57.2 OZ. FT.	0143718A	FILE #	CCN #	FILE #	CLASS #
			E46412	PRGY2	LR43341	4211-01

**GEOMETRIC CHARACTERISTICS & SYMBOLS**

- FLATNESS
- STRAIGHTNESS
- ∠ ANGULARITY
- ⊥ PERPENDICULARITY (SQUARENESS)
- // PARALLELISM
- ROUNDNESS (CIRCULARITY)
- ⊘ CYLINDRICITY
- △ PROFILE OF ANY SURFACE
- ∩ PROFILE OF ANY LINE
- ∅ RUNOUT
- ⊕ TRUE POSITION
- ◎ CONCENTRICITY
- ≡ SYMMETRY

ASME Y14.5M 1994

REGAL-BELOIT CORPORATION (RBC) PROVIDES TECHNICAL ASSISTANCE TO OUR CUSTOMERS IN SEVERAL AREAS. SINCE RBC DOES NOT RECEIVE ALL DATA CONCERNING THE USE AND APPLICATION OF THE MOTOR, THE SUITABILITY OF THE MOTOR FOR THE APPLICATION MUST BE DETERMINED BY THE CUSTOMER.

DIMENSIONS WITHOUT TOLERANCES ARE FOR REFERENCE ONLY.

DR BY: J.M.RAMIREZ 02-08-2013

APPD: CH.REYNOLDS 02-08-2013

THIRD ANGLE PROJECTION

EDS DATE 02-22-2008

FORMAT REV G

CONFIDENTIAL: THIS DRAWING AND ITS INFORMATION ARE THE EXCLUSIVE AND CONFIDENTIAL PROPERTY OF REGAL-BELOIT CORPORATION AND ARE NOT TO BE DISCLOSED, DUPLICATED, DISTRIBUTED OR OTHERWISE USED WITHOUT THE WRITTEN CONSENT OF REGAL-BELOIT CORPORATION. -ALL RIGHTS RESERVED.

REGAL-BELOIT CORPORATION

DESCRIPTION: MODEL-RFHP-48FR OUTLINE

SIZE: C DWG NO: FD6001

SCALE: NONE SHEET: 1

4

3

2

1

REVISION:	ECO	REVISADO POR:	FECHA:	APROBADO POR:	FECHA:
A	0030326	J.M.RAMIREZ	02-08-2013	S.JIMENEZ	02-08-2013

INFORMACION GENERAL:

OSCILACION DE FLECHA: .001[.03] L.T.I. POR PULGADA DE EXTENSION DE LONGITUD

BALERO: BALINES

POSICION DE MONTAJE: HORIZONTAL

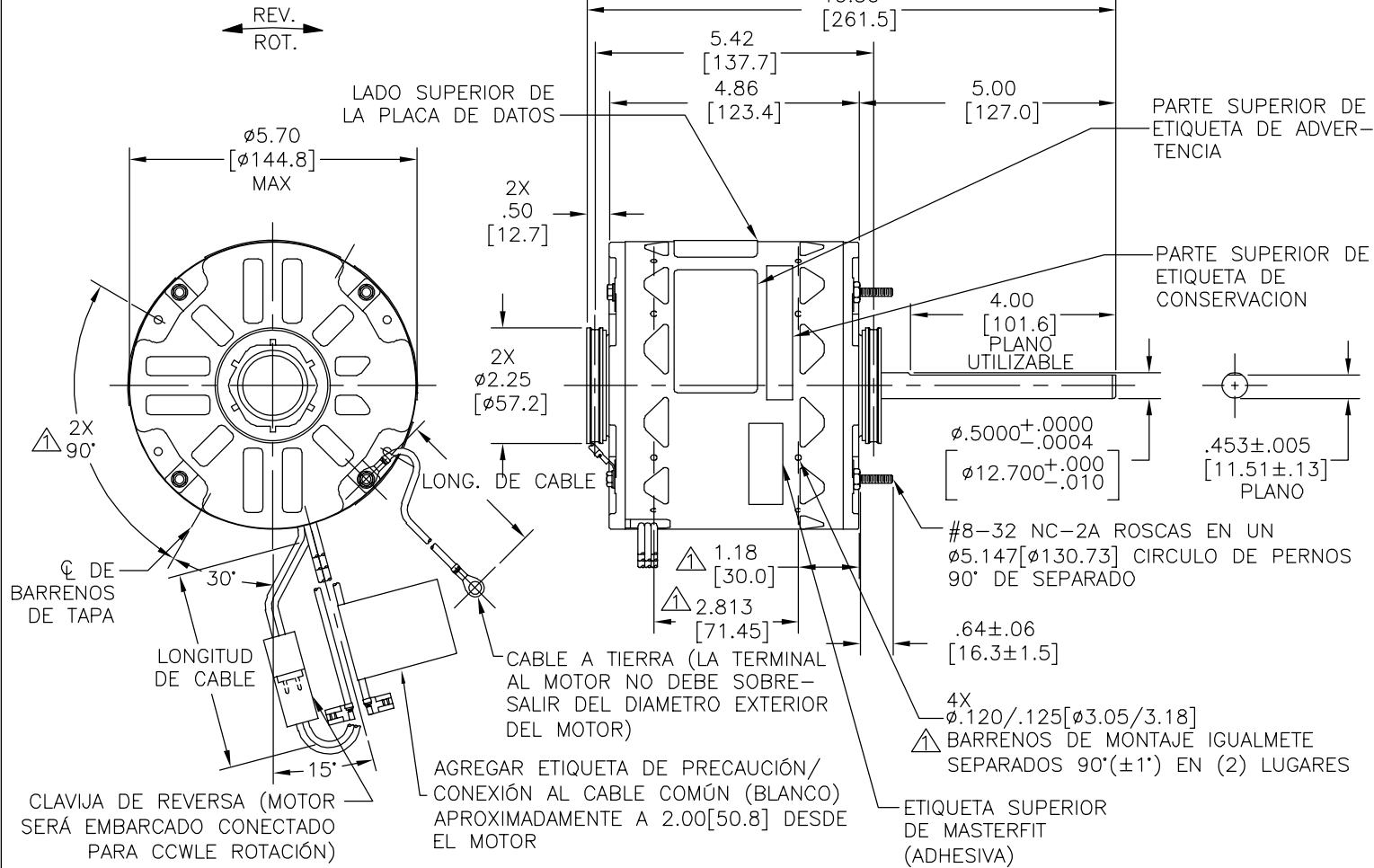
INFORMACION ELACTRICA:

PROTECTOR DE PROTECTOR: REINICIO AUTOMATICO (SENSATA 7AM 036)

CABLES: CALIBRE 18 GA., .03[.8] GROSOR XLP 125°C AISLANTE.

CLAVIJA DE REVERSA: CALIBRE 18 GA., .03[.8] GROSOR XLP 125°C AISLANTE.

CABLE DE TIERRA: CALIBRE 18 GA., .03[.8] GROSOR AISLANTE (VERDE)



VERDE (TIERRA)	9.0/11.0 [229/279]	.25[6.4] ANILLO
NEGRO/BLANCO	3.0/5.0 [76/127]	CLAVIJA DE REVERSA
CAFE	36.5/39.5 [927/1003]	.25[6.4] BANDERA
CAFE/BLANCO	36.5/39.5 [927/1003]	.25[6.4] BANDERA
ROJO	36.5/39.5 [927/1003]	.25[6.4] BANDERA
AMARILLO	36.5/39.5 [927/1003]	.25[6.4] BANDERA
AZUL	36.5/39.5 [927/1003]	.25[6.4] BANDERA
NEGRO	36.5/39.5 [927/1003]	.25[6.4] BANDERA
BLANCO	36.5/39.5 [927/1003]	.25[6.4] BANDERA
COLOR	LONGITUD	TERMINAL O LONGITUD DE DESFORRE

NOTE:

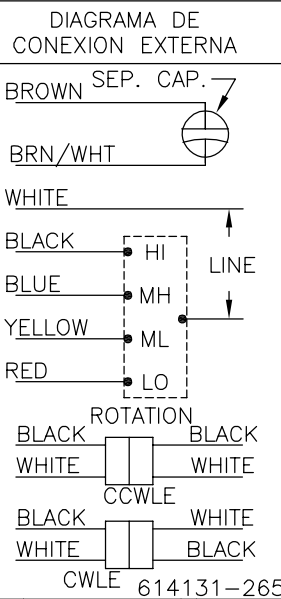
- INDICAR CARACTERISTICAS CRITICAS
- 4X ANILLO ADAPTADOR CON RANURA 615035, 8X TORNILLOS 615982-001 SERAN PUESTOS EN UNA BOLSA DE POLIETILENO Y SERAN EMPACADOS CON CADA MOTOR
- NUMERO DE PARTE DE DISTRIBUCION: FD6001  
NUMERO DE PARTE GRAINGER: 4ME28

CARCAZA - OLE	ABIERTO
TAPA - OLE	ABIERTO
CARCAZA - LE	ABIERTO
TAPA - LE	ABIERTO
TIPO DE MOTOR	

CLIENTE	DISTRIBUTION SERVICE
---------	----------------------

INFO DE PLACA DE DATOS:

MODEL NO.: F48T75A01  
CUST. P/N: [ ]  
HP: 3/4 MAX.  
ROT.: REVERSIBLE  
RPM: 1075/4 SPD.  
TYPE: UF  
FRAME: 48Y  
VOLTS: 208-230  
PH: 1  
AMPS: 4.0 MAX.  
HZ: 60  
INS.: B  
AMB.: 40° C  
DUTY: AIR OVER  
CAP.: 10 MFD/370 V  
ENCL: OPEN  
UL LOGO  
CSA LOGO  
THERMALLY PROTECTED



CURVA DE FUNCIONAMIENTO	TORSION @107 RPM (25°C)	MUESTRA APROVADA	COMPONENTE UL ARCHIVO#	CCN #	CSA ARCHIVO#	CLASE #
C32037	57.2 OZ. FT.	0143718A	E46412	PRGY2	LR43341	4211-01

CARACTERISTICAS DE GEOMETRIA Y SIMBOLOS  
 ▽ PLANICIDAD  
 - RECTITUD  
 < ANGULARIDAD  
 ⊥ PERPENDICULARIDAD (A ESCUADRA)  
 // PARALELISMO  
 ○ REDONDEZ (CIRCULARIDAD)  
 ∅ CILINDRICIDAD  
 △ PERFIL DE CUALQUIER SUPERFICIE  
 ∩ PERFIL DE CUALQUIER LINEA  
 ∠ VARIACION  
 ⊕ POSICION REAL  
 ⊙ CONCENTRICIDAD  
 = SIMETRIA

REGAL-BELOIT CORPORATION (RBC) PROVEE ASISTENCIA TECNICA A NUESTROS CLIENTES EN VARIAS AREAS, DESDE QUE RBC NO RECIBE TODOS LOS DATOS EN RELACION AL USO Y A LA APLICACION DEL MOTOR, LA APLICACION ADECUADA DEL MOTOR DEBE SER DETERMINADA POR EL CLIENTE.

DIMENSIONES SIN TOLERANCIA SON DE REFERENCIA SOLAMENTE

DIBUJADO POR: J.M.RAMIREZ 02-08-2013  
 APROBADO POR: CH.REYNOLDS 02-08-2013  
 TERCER ANGULO DE PROYECCION  
 CONFIDENCIAL: ESTE DIBUJO Y SU INFORMACION SON PROPIEDAD DE USO EXCLUSIVO Y CONFIDENCIAL DE REGAL-BELOIT CORPORATION. Y NO DEBERAN SER REVELADOS, DUPLICADOS, DISTRIBUIDOS O USARSE DE OTRA MANERA SIN EL CONSENTIMIENTO ESCRITO DE REGAL-BELOIT CORPORATION. -TODOS LOS DERECHOS RESERVADOS.

REGAL-BELOIT CORPORATION  
 DESCRIPCION: MODEL-RFHP-48FR OUTLINE  
 TAMAÑO: C NUMERO DE DIBUJO: FD6001  
 ESCALA:NONE HOJA: 1

4

3

2

1