

27 12 TOTAL 1 2 3 4 5 6 7 8 9 10 11 12 13 14 15 16 17 18 19 20 21 22 23 24 25 26 27 28 29 30 31 32 33 34 35 36 37 38 39 40 41 42 43 44 45 46 47 48 49 50 51 52 53 54 55 56 57 58

32TH67M

NEW	5-7-92	WAS 32TRDI563-A	MES	C	2/3/94	ADDED 75" LOC TO 'U' OPER	JRH
A	6-29-92	ADDED 'Y' OPER, REM. '6' OPER.	MJM	D	2-23-94	ADDED 324" TO 6A,B,C OPER'S	JTM
B	10/14/92	ADDED 6D OPERATION	MES	E		REMOVED 'NOT TOOLED'	JAB

C	DEPTH	AVAILABLE DEGREES±5°
	.825	STD.=90° 0°,45°,75°,330°
CA	STD. = .625	

32TH67M
SHEET #2

P	DIA.	LOCATION	AVAILABLE DEGREES±5°
PA	STD.=.136 ⁺⁰⁰² _{-.003}	AS SHOWN	STD.=157°
PB	D=.152 ⁺⁰⁰² _{-.003}		SEE U & 3 OPER. FOR OTHER DEGREES

U	WIDTH	DEPTH	AVAILABLE DEGREES±5°
UA	AS SHOWN		STD.=157° 0°,10°,23°,30°,35°,49°,55°,60°,67°,69°,75°,83°,90°,97°,111°,113°,120°,125°,139°,145°,150°,167°,203°,210°,215°,229°,238°,247°,257°,270°,280°,293°,300°,319°,330°,337°,339°,345°
UB			
UD			
UG			
UF			

UK	WIDTH	DEPTH	AVAILABLE DEGREES±5°
	AS SHOWN		STD.=152° 2°,23°,32°,62°,92°,122°,212°,242°,272°,302°,332°

SEE NOTE

V	WIDTH	DEPTH	AVAILABLE DEGREES±5°
	SAME AS "U" NOTCH OPER. EXCEPT D.I.E. SEE NOTE #7		

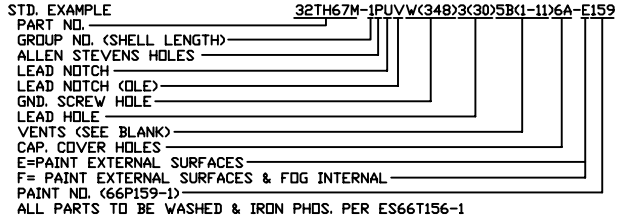
W	DIA.	DEPTH ±.062	AVAILABLE DEGREES±5°
	STD.=.150±.007	STD.=AS SHOWN	STD.=139° 0°,50°,85°,172°,188°,255°,345°,348°
		A=.375	

Y	DIA. ±.005	DEPTH ±.03	AVAILABLE DEGREES ±5°
	STD. = .135	STD. = .40	STD. = 0°

3	DIA.	DEPTH ±.010	AVAILABLE DEGREES±5°
	STD.=.500		STD.=0° 23°,30°,35°,49°,60°,90°,94°,120°,125°,139°,157°,210°,229°,240°,270°,293°,300°,319°,324°,330°
	STD.=.500	MM=.590 NM=1.000 NR=1.500	
	L=.875	MT=.687	
	N=.625	NK=.562	
	A=.375	NM=1.000 MT=.687	
	V=.718 TAPPED 1/2-14NPTF	MT=.687	
Z=.48 x .380 ACROSS FLATS	NN=.781		

6A	DEPTH	AVAILABLE DEGREES±5°
	STD.=1.562	STD.=90° 0°,145°,270°
6B	MK=1.312	315°,324°,345°
	MR=2.562	
6C	MS=1.590	
	MT=2.000	
6D	MV=2.187	STD=139°
	MW=2.468	

⊕ ON PSC MODELS DO NOT USE 'UK' AT 32,122,212 OR 302 W/O PULLING A C'BOLT AS C'BOLT WILL INTERFERE WITH LEAD BUSHING. ON SP MODELS DO NOT USE 'UK' AT 62,122,242 OR 302 W/O PULLING C'BOLT.



FIRST USED ON	PHASE II G.P.	DO NOT SCALE DRAWING	MagneTek	SHELL MACHINED	SHELL
DRAWN P.T.S	CHEF D.	MATERIAL	Wosso, Michigan 48867	SHEET #2	
CHECKED	APPROVED	FINISH	CAD GENERATED		
CHG. NOTICE DATE	04/09/92	SEE BOM & EXAMPLE	9704		