

4

3

2

1

GENERAL INFORMATION:

SHAFT RUNOUT: .001 [.03] T.I.R. PER INCH LENGTH OF EXTENSION

END PLAY: .010 TO .063 [.25 TO 1.60]

BEARINGS: SLEEVE

MOUNTING POSITION: HORIZONTAL

ELECTRICAL DATA:

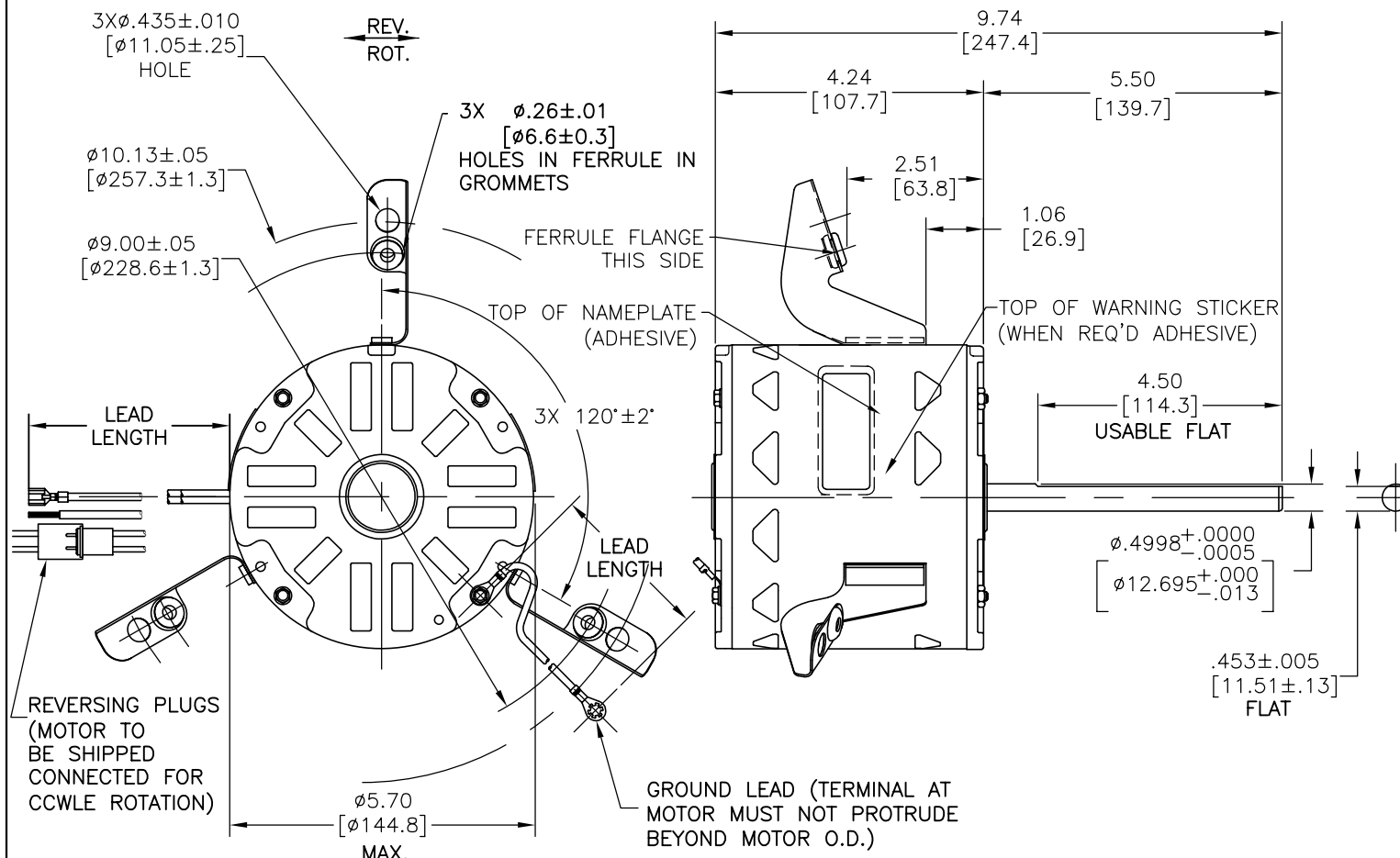
OVERLOAD PROTECTOR: AUTOMATIC RESET (T.I. 7AM 036)

LEADS: NO. 18 GA., .06 [1.5] THK., 105°C. PVC INSUL.

REVERSING LEADS: NO. 18 GA., .03 [0.8] THK., 125°C. PVC INSUL.

GROUND LEAD: NO. 18 GA., .03 [.8] THK. GREEN/YELLOW INSUL.

REV	REFERENCE ECN	REFERENCE PROJECT	REV BY	DATE	APPD	DATE
A	00006004	0701918	Jack	07/10/2007		



COLOR	LENGTH	TERMINAL OR STRIP LENGTH
GREEN/YELLOW (GRD)	11.0/13.0 [279/330]	#10 EYELET
BLACK/WHITE	5.0/7.0 [127/178]	REVERSING PLUG (MALE)
BLACK/WHITE	5.0/7.0 [127/178]	REVERSING PLUG (FEMALE)
BROWN	24.0/26.0 [610/660]	0.25[6.4] FEMALE SPADE
BROWN/WHITE	24.0/26.0 [610/660]	0.25[6.4] FEMALE SPADE
RED	24.0/26.0 [610/660]	0.50[12.7] SKIN
BLUE	24.0/26.0 [610/660]	0.50[12.7] SKIN
WHITE	24.0/26.0 [610/660]	0.50[12.7] SKIN
BLACK	24.0/26.0 [610/660]	0.50[12.7] SKIN

ENCLOSURE	CUSTOMER	DISTRIBUTION SERVICE
MAIN FRAME - OLE		OPEN
END FRAME - OLE		OPEN
MAIN FRAME - LE		OPEN
END FRAME - LE		OPEN

NAMEPLATE DATA:	EXTERNAL CONNECTION DIAGRAM
MODEL NO.: F48Z67A01 CUST. P/N: 9431A HP: 1/6, 1/8, 1/10 ROT.: REV. RPM: 1075/3 SPD TYPE: UF FRAME: 48Y VOLTS: 277 PH: 1 AMPS: .78, .61, .49 HZ: 60 INS.: B AMB.: 60° C DUTY: AIR OVER CAP.: 5 MFD/370 V ENCL.: OPEN UL LOGO CSA LOGO THERMALLY PROTECTED	<p>614131-351</p>

PERFORMANCE CURVE NO.	TORQUE @ 1075 RPM (25°C)	APPROVED SAMPLE	UL COMPONENT FILE #	CCN #	CSA FILE #	CLASS #
C32726A	13.8 OZ.FT	0604307B	E46412	PRGY2	LR43341	4211-01

GEOMETRIC CHARACTERISTICS & SYMBOLS
 ▽ FLATNESS
 — STRAIGHTNESS
 ∠ ANGULARITY
 ⊥ PERPENDICULARITY (SQUARENESS)
 ∥ PARALLELISM
 ○ ROUNDNESS (CIRCULARITY)
 ∅ CYLINDRICITY
 △ PROFILE OF ANY SURFACE
 ∩ PROFILE OF ANY LINE
 ↑ RUNOUT
 ⊕ TRUE POSITION
 ⊙ CONCENTRICITY
 ≡ SYMMETRY

A.O. SMITH PROVIDES TECHNICAL ASSISTANCE TO OUR CUSTOMERS IN SEVERAL AREAS. SINCE A.O. SMITH DOES NOT RECEIVE ALL DATA CONCERNING THE USE AND APPLICATION OF THE MOTOR, THE SUITABILITY OF THE MOTOR FOR THE APPLICATION MUST BE DETERMINED BY THE CUSTOMER.
 DIMENSIONS WITHOUT TOLERANCES ARE FOR REFERENCE ONLY.

DR BY: JACK.Z 07-02-2007
 APPD:
 THIRD ANGLE PROJECTION
 EDS DATE 01-21-2007
 FORMAT REV E
 CONFIDENTIAL: THIS DRAWING AND ITS INFORMATION ARE THE EXCLUSIVE AND CONFIDENTIAL PROPERTY OF A.O. SMITH CORP. AND ARE NOT TO BE DISCLOSED, DUPLICATED, DISTRIBUTED OR OTHERWISE USED WITHOUT THE WRITTEN CONSENT OF A.O. SMITH CORP.
 -ALL RIGHTS RESERVED. ASME Y14.5M 1994

A.O. SMITH
 ELECTRICAL PRODUCTS COMPANY
 TIPP CITY, OHIO
 A DIVISION OF A. O. SMITH CORPORATION
 COPYRIGHT 1995
 DESCRIPTION: OUTLINE MOTOR
 SIZE C DWG NO F48Z67A01
 SCALE NONE SHEET 1

4

3

2

1

4

3

2

1

INFORMACION GENERAL:

OSCILACION DE FLECHA: .001 [.03] T.I.R. PER INCH LENGTH OF EXTENSION

JUEGO AXIAL: .010 A .063 [.25 A 1.60]

BALEROS: MANGA

POSICION DEL MONTAJE: HORIZONTAL

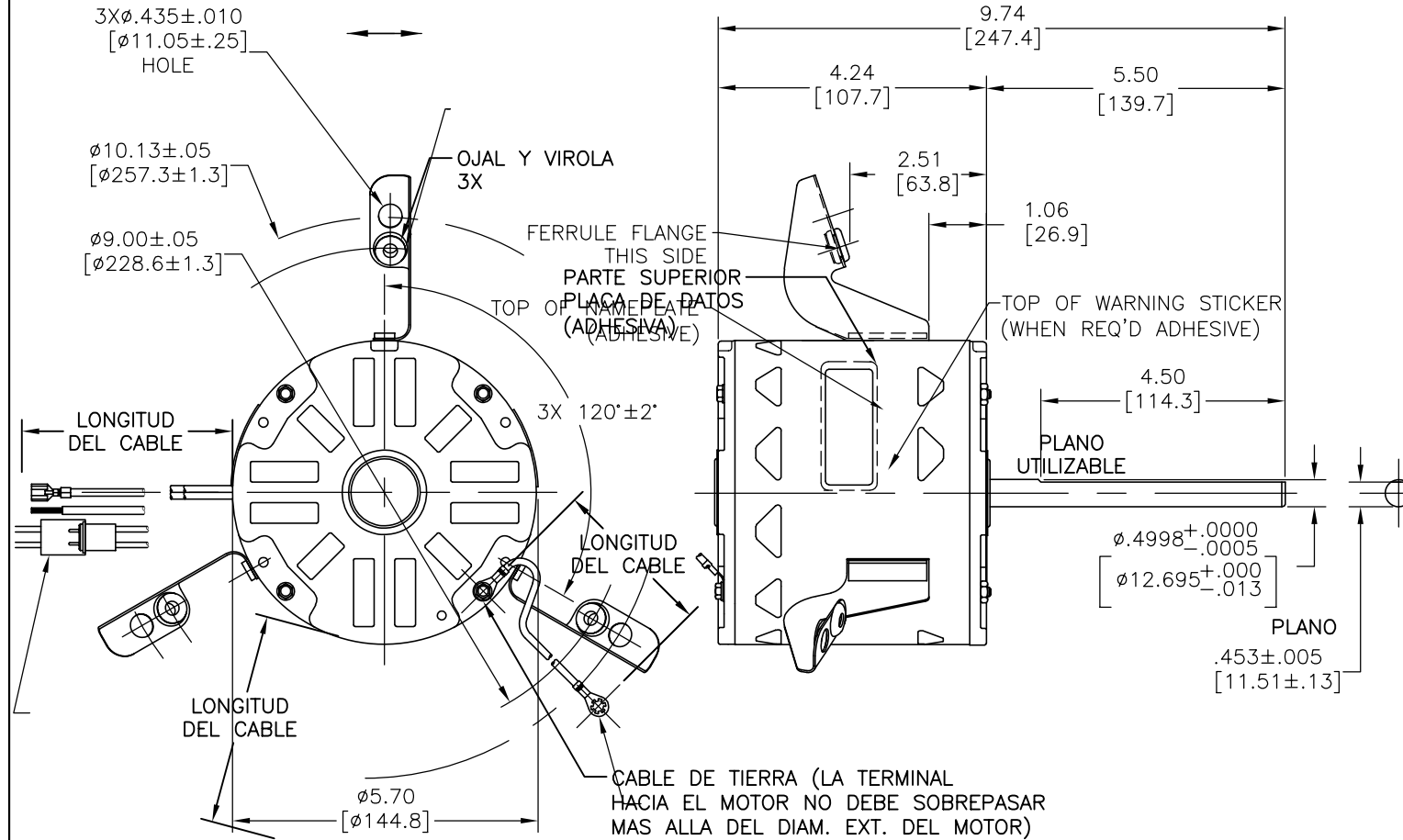
INFORMACION ELECTRICA:

SOBRECARGA DEL PROTECTOR: REINICIO AUTOMATIC (T.I. 7AM 036)

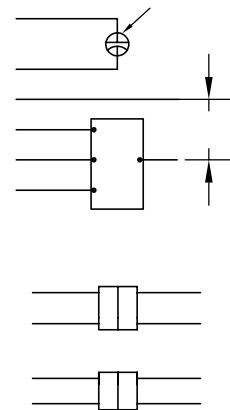
CABLES: NO. 18 GA., .06 [1.5] THK. PVC 105°C AISLAM.

CABLE DE TIERRA: NO. 18 GA., .03 [.8] THK. (VERDE) AISLAM.

REVISION:	ECN REFERENCIA:	PROYECTO REFERENCIA:	REVISADO POR:	FECHA:	APROBADO POR:	FECHA:
A	00006004	0701918	Jack	07/10/2007		



INFORMACION DE ETIQUETA: DIAGRAMA DE CONEXION EXTRNA



614131-351

	11.0/13.0 [279/330]	
	5.0/7.0 [127/178]	
VERDE (TIERRA)	5.0/7.0 [127/178]	OJAL #10
PURPURA	24.0/26.0 [610/660]	.25 [6.4] PRE-AISLA. TERMINAL HEMBRA.
PURPURA	24.0/26.0 [610/660]	.25 [6.4] PRE-AISLA. TERMINAL HEMBRA.
ROJO	24.0/26.0 [610/660]	.25 [6.4] TERMINAL HEMBRA (DE ESPADA)
AMARILLO	24.0/26.0 [610/660]	.25 [6.4] TERMINAL HEMBRA (DE ESPADA)
NEGRO	24.0/26.0 [610/660]	.25 [6.4] TERMINAL HEMBRA (DE ESPADA)
BLANCO	24.0/26.0 [610/660]	.25 [6.4] TERMINAL HEMBRA (DE ESPADA)
	LONGITUD	TERMINAL O LONGITUD DE DESFORRE

DE CARCASA - OLE	ABIERTO
DE TAPA - OLE	ABIERTO
DE CARCASA - LE	ABIERTO
DE TAPA - LE	ABIERTO

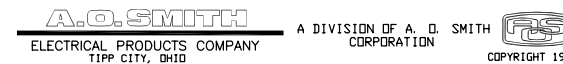
CLIENTE	
---------	--

CURVAS DE FUNCIONAMIENTO	TORSION @ 1075 RPM (25°C)	MUESTRA APROBADA	COMPONENTE UL	CSA
C32726A	13.8 OZ.FT	0604307B	#ARCHIVO CCN # #ARCHIVO CLASE #	LR43341 4211-01

- CARACTERISTICAS DE GEOMETRIA Y SIMBOLOS**
- ▮ PLANICIDAD
 - RECTITUD
 - ∠ ANGULARIDAD
 - ⊥ PERPENDICULARIDAD (A ESCUADRA)
 - // PARALELISMO
 - REDONDEZ (CIRCULARIDAD)
 - ∅ CILINDRICIDAD
 - △ PERFIL DE CUALQUIER SUPERFICIE
 - ∩ PERFIL DE CUALQUIER LINEA
 - ↑ VARIACION
 - ⊕ POSICION REAL
 - ◎ CONCENTRICIDAD
 - ≡ SIMETRIA

DIBUJADO POR: JACK.Z
 APROBADO POR:

07-02-2007



TERCER ANGULO DE PROYECCION



FECHA EDS: 01-21-2007
 REV. FORMATO: E

CONFIDENCIAL: ESTE DIBUJO Y SU INFORMACION SON PROPIEDAD DE USO EXCLUSIVO Y CONFIDENCIAL DE A.O.SMITH CORP. Y NO DEBERAN SER REVELADOS, DUPLICADOS, DISTRIBUIDOS O USARSE DE OTRA MANERA SIN EL CONSENTIMIENTO ESCRITO DE A.O. SMITH CORP. -TODOS LOS DERECHOS RESERVADOS. ASME Y14.5M 1994

DESCRIPCION:

TAMAÑO: C NUMERO DE DIBUJO: F48Z67A01

ESCALA: NONE HOJA: 1

4

3

2

1

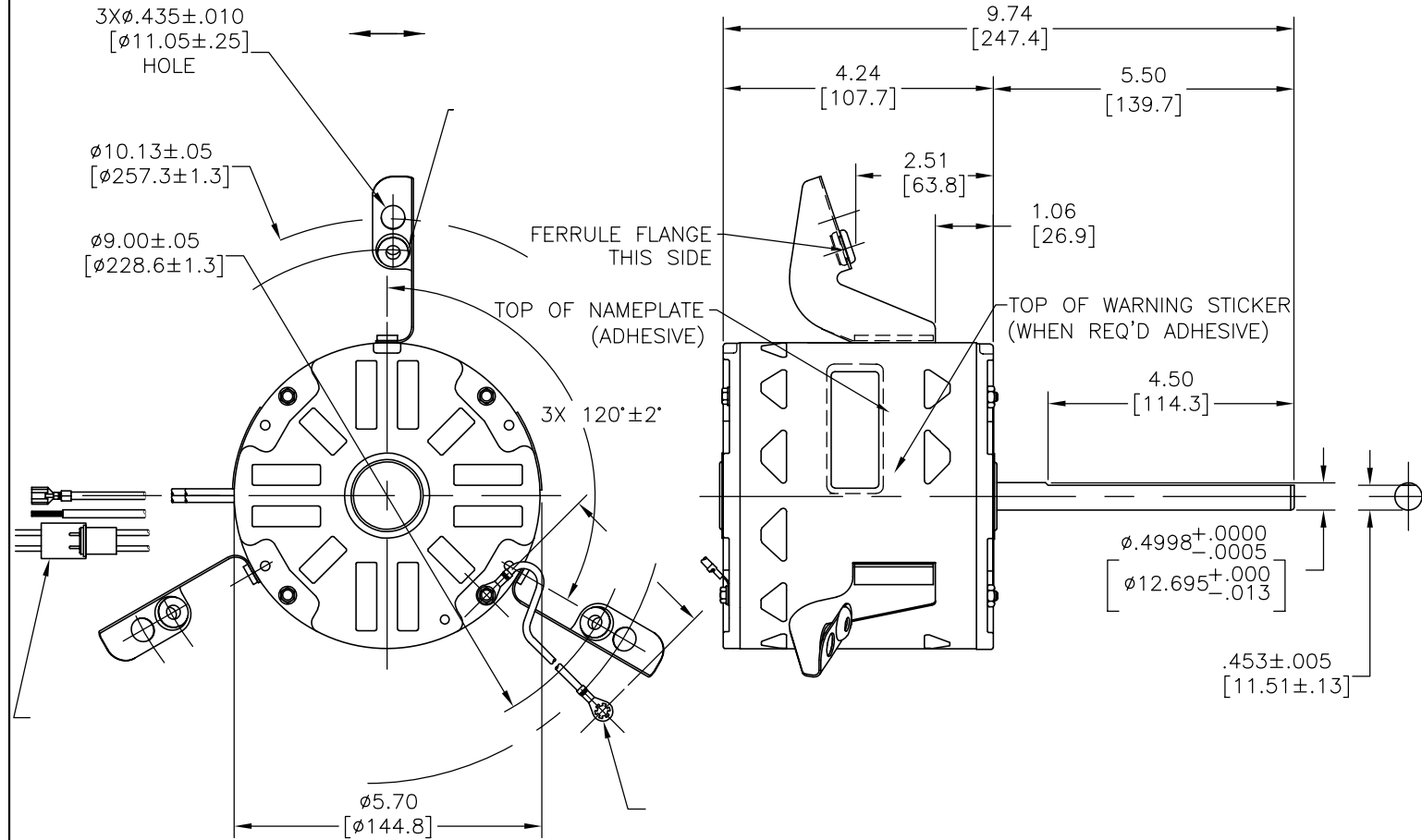
4

3

2

1

版本	更改通知号	项目号	编制	日期	批准	日期
A	00006004	0701918	Jack	07/10/2007		



D

D

C

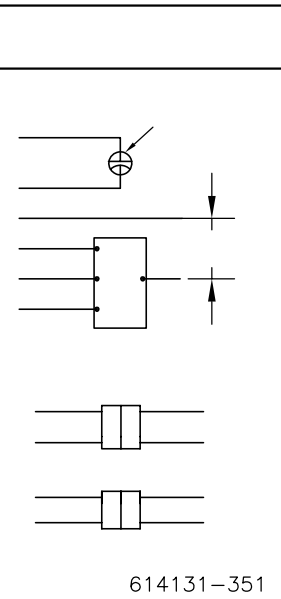
C

B

B

A

A



614131-351

	11.0/13.0	
	[279/330]	
	5.0/7.0	
	[127/178]	
	5.0/7.0	
	[127/178]	
	24.0/26.0	
	[610/660]	
	24.0/26.0	
	[610/660]	
	24.0/26.0	
	[610/660]	
	24.0/26.0	
	[610/660]	
	24.0/26.0	
	[610/660]	

C32726A	13.8 OZ.FT	0604307B	E46412	PRGY2	LR43341	4211-01
---------	------------	----------	--------	-------	---------	---------

- 形位公差
- 平面度
- 直线度
- ∠ 倾斜度
- ⊥ 垂直度
- ∥ 平行度
- 圆度
- ⊘ 圆柱度
- ⊙ 面轮廓度
- ⊖ 线轮廓度
- ↗ 圆跳动
- ⊕ 位置度
- ⊗ 同轴度
- ≡ 对称度

绘图: JACK.Z 07-02-2007

批准:

第三角投影

图纸格式发布日期 01-21-2007
图纸格式版本 E

机密: 本图纸及相关信息所有权归A. O. SMITH公司所有。未经A. O. SMITH公司书面授权, 不得泄露、复制、传播或其他用途。--版权所有

ASME Y14.5M 1994

A. O. SMITH A DIVISION OF A. O. SMITH CORPORATION
ELECTRICAL PRODUCTS COMPANY TIPP CITY, OHIO

名称: F48Z67A01

图幅: C 图号: F48Z67A01

比例: NONE 页号: 1

4

3

2

1