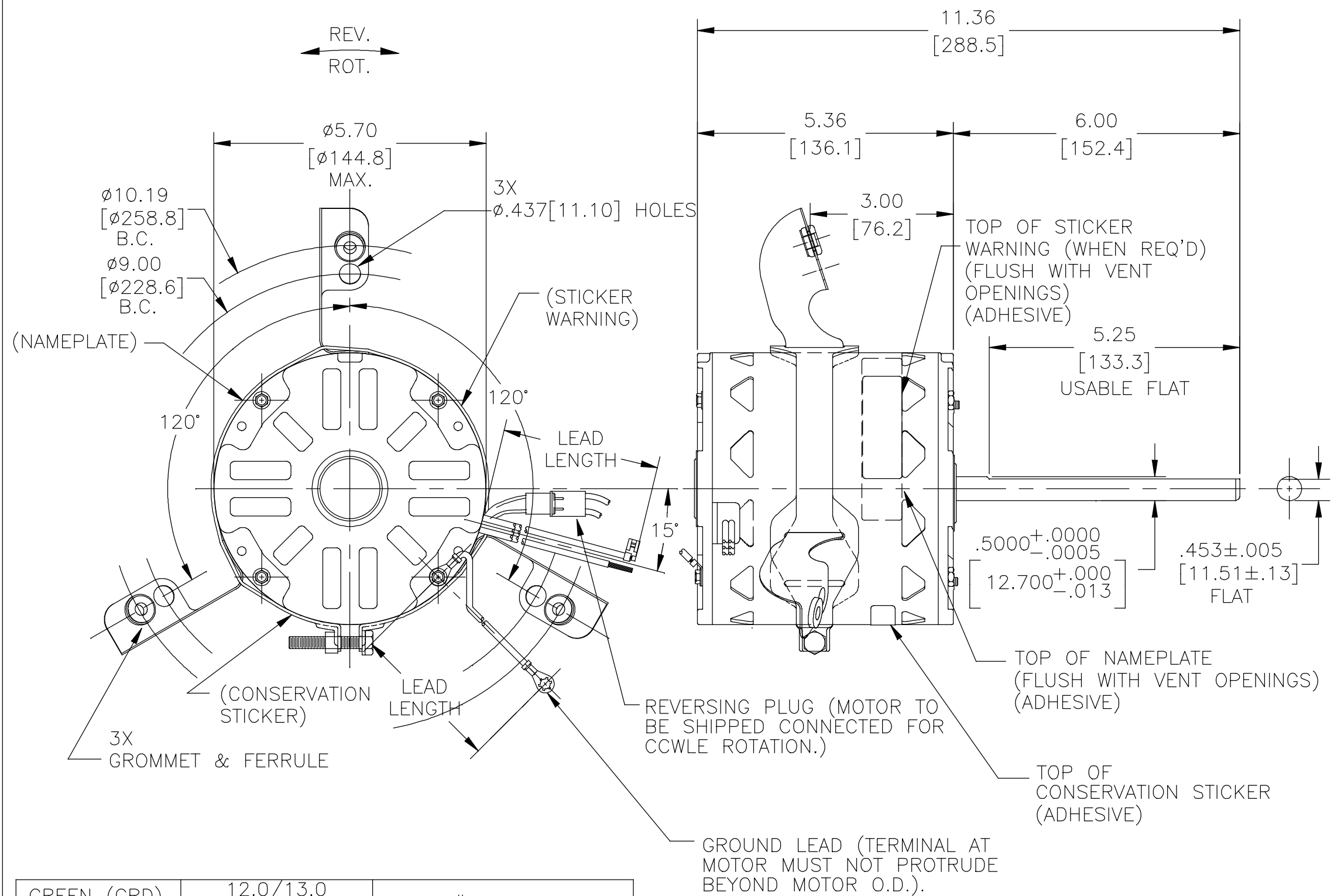


GENERAL INFORMATION:

SHAFT RUNOUT: .001[.03] T.I.R. PER INCH LENGTH OF EXTENSION.  
 END PLAY: .010[.25] TO .063[1.60]  
 BEARINGS: SLEEVE  
 MOUNTING POSITION: HORIZONTAL  
 ELECTRICAL DATA:  
 OVERLOAD PROTECTOR: AUTOMATIC RESET (T.I. 7AM 032)  
 LEADS: NO. 18 GA., .06[1.5] THK. 125°C INSUL.  
 REVERSING LEADS: NO. 18 GA., .03[.8] THK. 125°C INSUL.  
 GROUND LEAD: NO. 18 GA., .03[.8] THK., (GREEN) INSUL.



NOTE:  
 1. DISTRIBUTION PART NUMBER: FML1076V1.  
 GRAINGER PART NUMBER: 4MB40.

COLOR	LENGTH	TERMINAL OR STRIP LENGTH
GREEN (GRD)	12.0/13.0 [305/330]	#10 EYELET
BLACK/WHITE	3.0/5.0 [76/127]	REVERSING PLUG
BROWN/WHITE	26.0/28.0 [660/711]	.25 [6.4] FLAG
BROWN	26.0/28.0 [660/711]	.25 [6.4] FLAG
YELLOW	26.0/28.0 [660/711]	.50 [12.7] SKIN
BLACK	26.0/28.0 [660/711]	.50 [12.7] SKIN
BLUE	26.0/28.0 [660/711]	.50 [12.7] SKIN
RED	26.0/28.0 [660/711]	.50 [12.7] SKIN
ORANGE	26.0/28.0 [660/711]	.50 [12.7] SKIN

MAIN FRAME - OLE	OPEN
END FRAME - OLE	OPEN
MAIN FRAME - LE	OPEN
END FRAME - LE	OPEN

CUSTOMER	DISTRIBUTION SERVICE

SEE NOTE 1

NAMEPLATE DATA:	EXTERNAL CONNECTION DIAGRAM														
MODEL NO.: F48V36A01 CUST. P/N: [-----] HP: 3/4 ROT.: REVERSIBLE RPM: 1075/4 SPD. TYPE: UF FRAME: 48Y VOLTS: 115 PH: 1 AMPS: 10.9 HZ: 60/50 INS.: A AMB.: 50° C DUTY: AIR OVER CAP.: 15 MFD/370 V ENCL: OPEN UL LOGO CSA LOGO THERMALLY PROTECTED	SEP. CAP. BROWN BRN/WHT YELLOW BLACK HI BLUE M-HI RED M-LO ORANGE LO ROTATION BLACK WHITE CCWLE BLACK WHITE CWLE														
<table border="1"> <thead> <tr> <th>PERFORMANCE CURVE NO.</th> <th>TORQUE @1075 RPM (25°C)</th> <th>APPROVED SAMPLE</th> <th>UL COMPONENT FILE #</th> <th>CCN #</th> <th>CSA FILE #</th> <th>CLASS #</th> </tr> </thead> <tbody> <tr> <td>C32356</td> <td>77.0 OZ. FT.</td> <td>0442708C</td> <td>E46412</td> <td>PRGY2</td> <td>LR43341</td> <td>4211-01</td> </tr> </tbody> </table>	PERFORMANCE CURVE NO.	TORQUE @1075 RPM (25°C)	APPROVED SAMPLE	UL COMPONENT FILE #	CCN #	CSA FILE #	CLASS #	C32356	77.0 OZ. FT.	0442708C	E46412	PRGY2	LR43341	4211-01	
PERFORMANCE CURVE NO.	TORQUE @1075 RPM (25°C)	APPROVED SAMPLE	UL COMPONENT FILE #	CCN #	CSA FILE #	CLASS #									
C32356	77.0 OZ. FT.	0442708C	E46412	PRGY2	LR43341	4211-01									

DRAWING REVISION	REVISION BY	DATE
C	HANNA.ZOU	09-11-2018
ECO	Jesus Rodriguez	09-11-2018
ECO-0152446		
SEE ECO		

COPYRIGHT REGAL BELOIT AMERICA, INC. ALL RIGHTS RESERVED. PROPRIETARY AND CONFIDENTIAL INFORMATION - THIS DOCUMENT IS THE PROPERTY OF REGAL BELOIT AMERICA, INC. ("OWNER") AND CONTAINS OWNER'S PROPRIETARY INFORMATION. ANY PERSON, CORPORATION OR OTHER FIRM RECEIVING IT IS DEEMED, BY RECEIVING IT, TO AGREE THAT IT, AND/OR ANY PART OF IT, SHALL NOT BE DISCLOSED TO ANY PERSON, CORPORATION OR OTHER ENTITY, DUPLICATED, AND/OR USED, EXCEPT AS EXPRESSLY APPROVED IN WRITING IN ADVANCE BY OWNER. THIS DOCUMENT SHALL BE RETURNED TO OWNER UPON REQUEST. IT MAY BE SUBJECT TO CERTAIN RESTRICTIONS UNDER APPLICABLE EXPORT CONTROL LAWS AND REGULATIONS.

DRAWN BY: DZ	Regal Beloit America, Inc.
DATE: 02-21-2011	
APPROVED BY: DZ	
DATE: 02-21-2011	
PROCESS/FINISH	DESCRIPTION: MODEL-RFHP-48FR OUTLINE
	MATERIAL
THIRD ANGLE PROJECTION	SIZE DWG NO: F48V36A01
	SHEET 1