

**GENERAL INFORMATION:**

SHAFT RUNOUT: .001 T.I.R. PER INCH LENGTH OF EXTENSION.

END PLAY: .010 TO .063

BEARINGS: SLEEVE

MOUNTING POSITION: HORIZONTAL

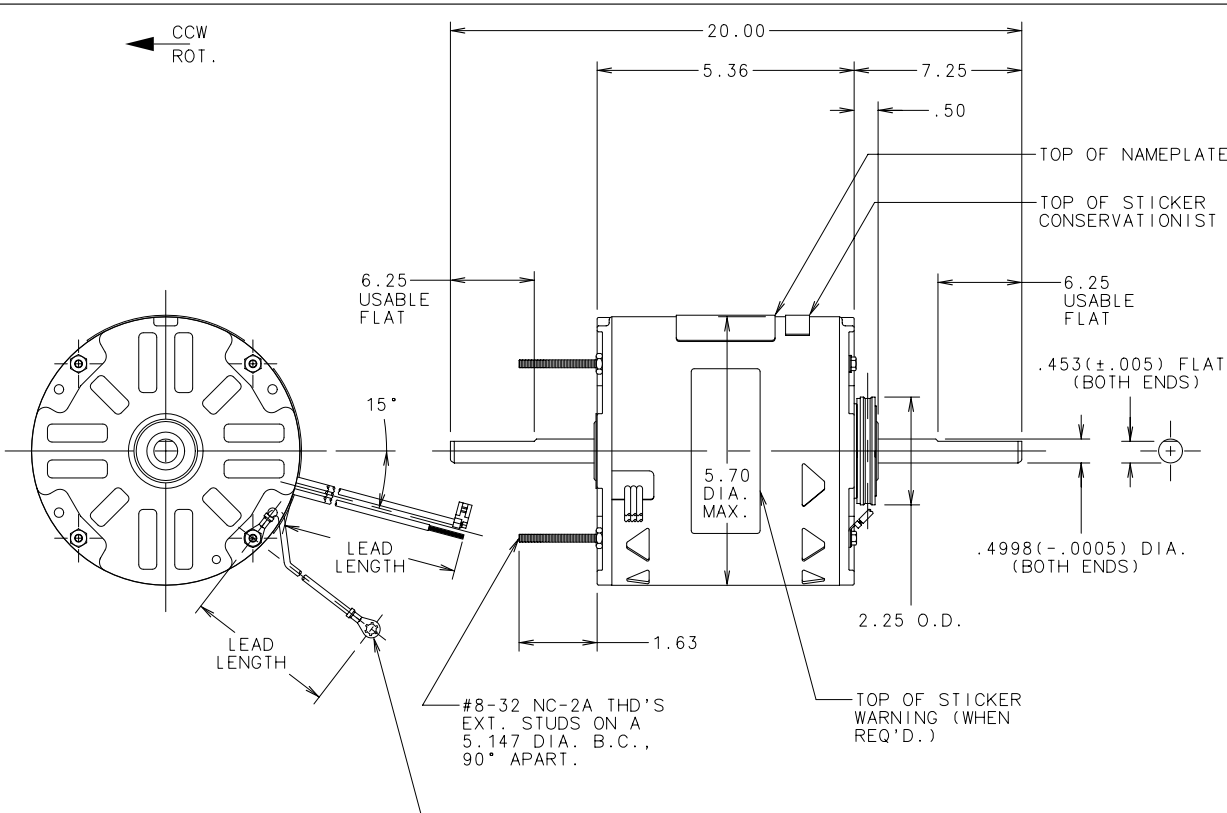
**ELECTRICAL DATA:**

OVERLOAD PROTECTOR: AUTOMATIC RESET (T.I. 7AM 032)

LINE LEADS: NO. 16 GA., .06 THK. 105°C PVC. INSUL.

CAPACITOR LEADS: NO. 18 GA., .06 THK. 105°C PVC. INSUL.

GROUND LEAD: NO. 18 GA., .03 THK., (GREEN) INSUL.



GROUND LEAD (TERMINAL AT MOTOR MUST NOT PROTRUDE BEYOND MOTOR O.D.).

NOTE:  
- (1) RESILIENT MOUNTING KIT 615059-001 TO BE PACKED WITH EACH MOTOR.

NAMEPLATE DATA:	EXTERNAL CONNECTION DIAGRAM
MODEL: F48G06A01 CUST. P/N: RAL1076 HP: 3/4 ROT: CCWLE RPM: 1075/3 SPD TYPE: UF FRAME: 48Y VOLTS: 115 PH: 1 AMPS: 8.2 HZ: 60 INS: A AMB: 40 °C DUTY: AIR OVER CODE: - CAP.: 15 MFD/370V ENCL: SEMI-ENCL CSA LOGO UL LOGO THERMALLY PROTECTED	
	614131-106

COLOR	LENGTH	TERMINAL OR STRIP LENGTH
GREEN (GRD)	29/31	#10 EYELET
BROWN	35/37	.25 FLAG
BROWN/WHITE	35/37	.25 FLAG
WHITE	35/37	.60 SKIN
BLACK	35/37	.60 SKIN
BLUE	35/37	.60 SKIN
RED	35/37	.60 SKIN

ENCLOSURE	
MAIN FR.-OLE	OPEN-BOTTOM HALF
END FR.-OLE	OPEN
MAIN FR.-LE	OPEN-BOTTOM HALF
END FR.-LE	OPEN

CUST.	DISTRIBUTION SERVICES
-------	-----------------------

PERFORMANCE CURVE NO.	TORQUE @1075 RPM (25°C)	APPROVED SAMPLE	UL COMPONENT		CSA	
			FILE#	GUIDE#	FILE#	GUIDE#
C31255	61.9 OZ. FT.	95AC073A	E46412	PRGY2	LR43341	260-0-0

DATE	CHANGED FROM	APPROVED ENG DRF	NOTICE	DATE	CHANGED FROM	APPROVED ENG DRF	NOTICE
H				A 09/18/97	REMOVED PLUGGED OILERS REDRAWN TO NEW FORMAT	JRS JAR	97AR0485
J				B 05/18/98	INCREASED LEAD LENGTHS	JRS EJR	98AR0021
K				C			
L				D			
M				E			
N				F			
P				G			

A.O. SMITH PROVIDES TECHNICAL ASSISTANCE TO OUR CUSTOMERS IN SEVERAL AREAS. SINCE A.O. SMITH DOES NOT RECEIVE ALL DATA CONCERNING THE USE AND APPLICATION OF THE MOTOR, THE SUITABILITY OF THE MOTOR FOR THE APPLICATION MUST BE DETERMINED BY THE CUSTOMER.

DIMENSIONS WITHOUT TOLERANCES ARE FOR REF. ONLY

CONFIDENTIAL: THIS DRAWING AND ITS INFORMATION ARE THE EXCLUSIVE AND CONFIDENTIAL PROPERTY OF A.O. SMITH CORP. AND ARE NOT TO BE DISCLOSED, DUPLICATED, DISTRIBUTED OR OTHERWISE USED WITHOUT THE WRITTEN CONSENT OF A.O. SMITH CORP. - ALL RIGHTS RESERVED

MATERIAL	W. HEATH 05/11/95
PROCESS	T. RILEY 05/12/95
REFERENCE	
APPLICATION	F48G06A01
USER/FILE	PSCS/MOTOUT

**A.O. SMITH**  
ELECTRICAL PRODUCTS COMPANY  
TIPP CITY, OHIO  
A DIVISION OF A.O. SMITH CORPORATION  
COPYRIGHT 1995

DESCRIPTION  
**OUTLINE MOTOR**

SIZE **B** PART NUMBER **11773-035**

SCALE NONE NOTICE 95AN0238 SHEET 1 of 1