

4

3

2

1

REV	REFERENCE ECN	REFERENCE PROJECT	REV BY	DATE	APPD	DATE
B		03480101	Teresi	10-05-2007	CContr	10-12-2007

GENERAL INFORMATION:

SHAFT RUNOUT: .001 [.03] T.I.R. PER INCH LENGTH OF EXTENSION

END PLAY: .010 TO .063 [.25 TO 1.60]

BEARINGS: SLEEVE

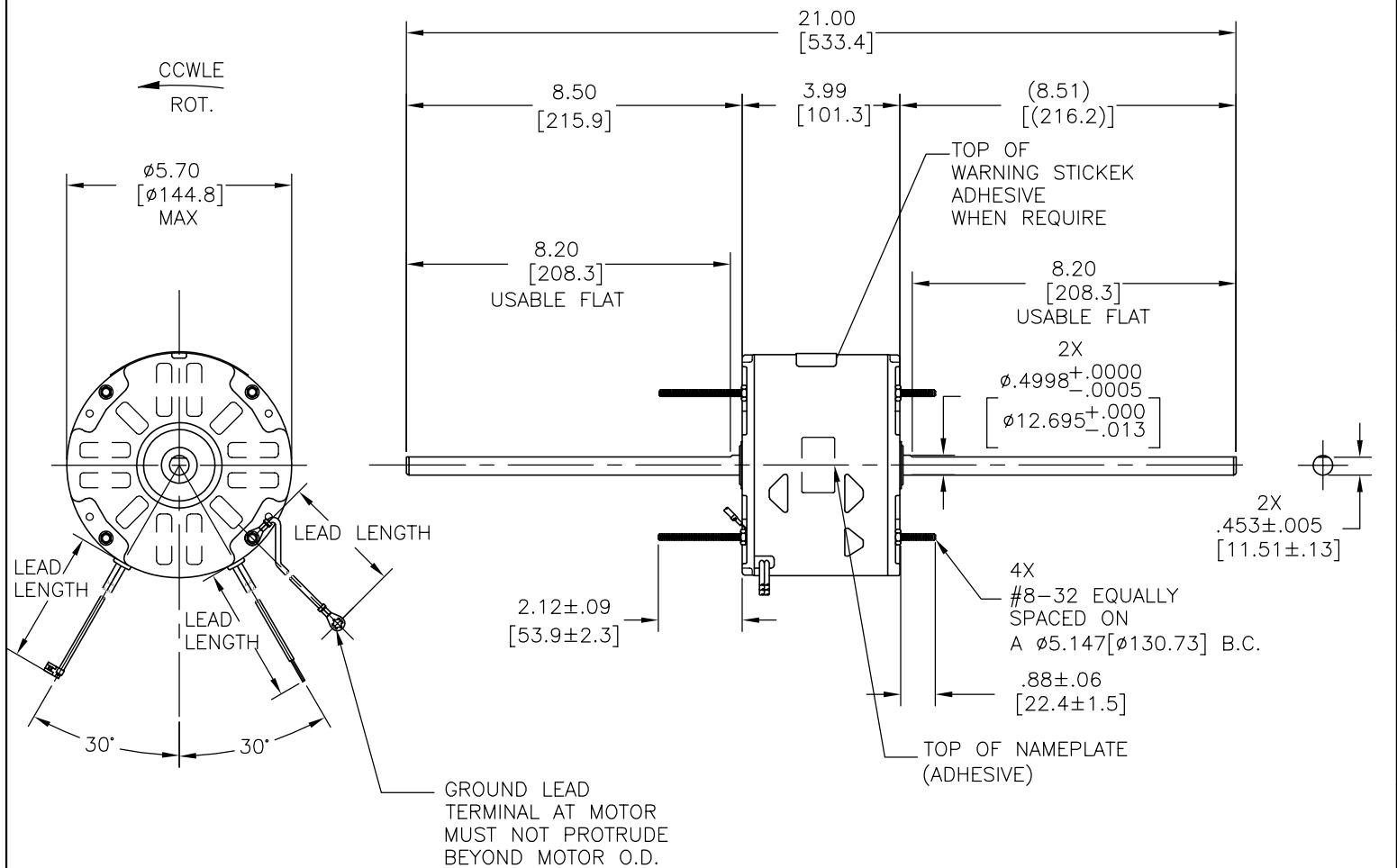
MOUNTING POSITION: ALL ANGLE

ELECTRICAL DATA:

OVERLOAD PROTECTOR: AUTOMATIC RESET (T.I. 7AM 036)

LEADS: NO. 18 GA., .06 [1.5] THK. PVC 105°C INSUL.

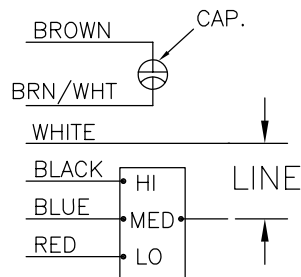
GROUND LEAD: NO. 16 GA., .03 [.8] THK. (GREEN/YELLOW) INSUL.



NAMEPLATE DATA:

EXTERNAL CONNECTION DIAGRAM

MODEL NO.: F48Z29A01  
 CUST. P/N: 661A  
 HP: 1/4,1/6,1/8  
 ROT.: CCWLE  
 RPM: 1625 3SPD  
 TYPE: UF  
 FRAME: 48Y  
 VOLTS: 115  
 PH: 1  
 AMPS: 3.0,2.3,1.9  
 HZ: 60  
 INS.: B  
 AMB.: 60 °C  
 DUTY: AIR OVER  
 CODE: -  
 CAP.: 5 MFD/370V  
 ENCL: SEMI-ENCL  
 UL LOGO  
 CSA LOGO  
 THERMALLY PROTECTED



614131-296

GRN/YEL(GRD)	11.0/13.0 [279/330]	#10 EYELET
BROWN	23.0/25.0 [584/635]	.25[6.4] FLAG
BROWN/WHITE	23.0/25.0 [584/635]	.25[6.4] FLAG
WHITE	23.0/25.0 [584/635]	.50[12.7] SKIN
BLACK	23.0/25.0 [584/635]	.50[12.7] SKIN
BLUE	23.0/25.0 [584/635]	.50[12.7] SKIN
RED	23.0/25.0 [584/635]	.50[12.7] SKIN
COLOR	LENGTH	TERMINAL OR STRIP LENGTH

MAIN FRAME - OLE	SEMI-ENCLOSED
END FRAME - OLE	OPEN
MAIN FRAME - LE	SEMI-ENCLOSED
END FRAME - LE	OPEN

CUSTOMER	DISTRIBUTION SERVICES
----------	-----------------------

PERFORMANCE CURVE NO.	TORQUE @ 1625 RPM (25°C)	APPROVED SAMPLE	UL COMPONENT		CSA	
C32699	12.8 OZ. FT.	0603160C	FILE #	GUIDE#	FILE #	GUIDE #
			E46412	PRGY2	LR43341	4211-01

GEOMETRIC CHARACTERISTICS & SYMBOLS

- ▭ FLATNESS
- STRAIGHTNESS
- ∠ ANGULARITY
- ⊥ PERPENDICULARITY (SQUARENESS)
- ∥ PARALLELISM
- ROUNDNESS (CIRCULARITY)
- ⊘ CYLINDRICITY
- △ PROFILE OF ANY SURFACE
- ▽ PROFILE OF ANY LINE
- ↗ RUNOUT
- ⊕ TRUE POSITION
- ◎ CONCENTRICITY
- ≡ SYMMETRY

A.O. SMITH PROVIDES TECHNICAL ASSISTANCE TO OUR CUSTOMERS IN SEVERAL AREAS. SINCE A.O. SMITH DOES NOT RECEIVE ALL DATA CONCERNING THE USE AND APPLICATION OF THE MOTOR, THE SUITABILITY OF THE MOTOR FOR THE APPLICATION MUST BE DETERMINED BY THE CUSTOMER.

DIMENSIONS WITHOUT TOLERANCES ARE FOR REFERENCE ONLY.

DR BY: ZHU HONG 05-24-2007

APPD:

THIRD ANGLE PROJECTION

EDS DATE 01-21-2007  
 FORMAT REV E

CONFIDENTIAL: THIS DRAWING AND ITS INFORMATION ARE THE EXCLUSIVE AND CONFIDENTIAL PROPERTY OF A.O. SMITH CORP. AND ARE NOT TO BE DISCLOSED, DUPLICATED, DISTRIBUTED OR OTHERWISE USED WITHOUT THE WRITTEN CONSENT OF A.O. SMITH CORP.

-ALL RIGHTS RESERVED. ASME Y14.5M 1994

**A.O. SMITH** A DIVISION OF A. O. SMITH CORPORATION  
 ELECTRICAL PRODUCTS COMPANY  
 TIPP CITY, OHIO

DESCRIPTION: **OUTLINE**

SIZE C DWG NO F48Z29A01

SCALE NONE SHEET 1

4

3

2

1

4

3

2

1

REVISION: B	ECN REFERENCIA:	PROYECTO REFERENCIA: 03480101	REVISADO POR: Teresi	FECHA: 10-05-2007	APROBADO POR: CContr	FECHA: 10-12-2007
-------------	-----------------	-------------------------------	----------------------	-------------------	----------------------	-------------------

**INFORMACION GENERAL:**

OSCILACION DE FLECHA: .001 [.03] T.I.R. PER INCH LENGTH OF EXTENSION

JUEGO AXIAL: .010 A .063 [.25 A 1.60]

BALEROS: MANGA

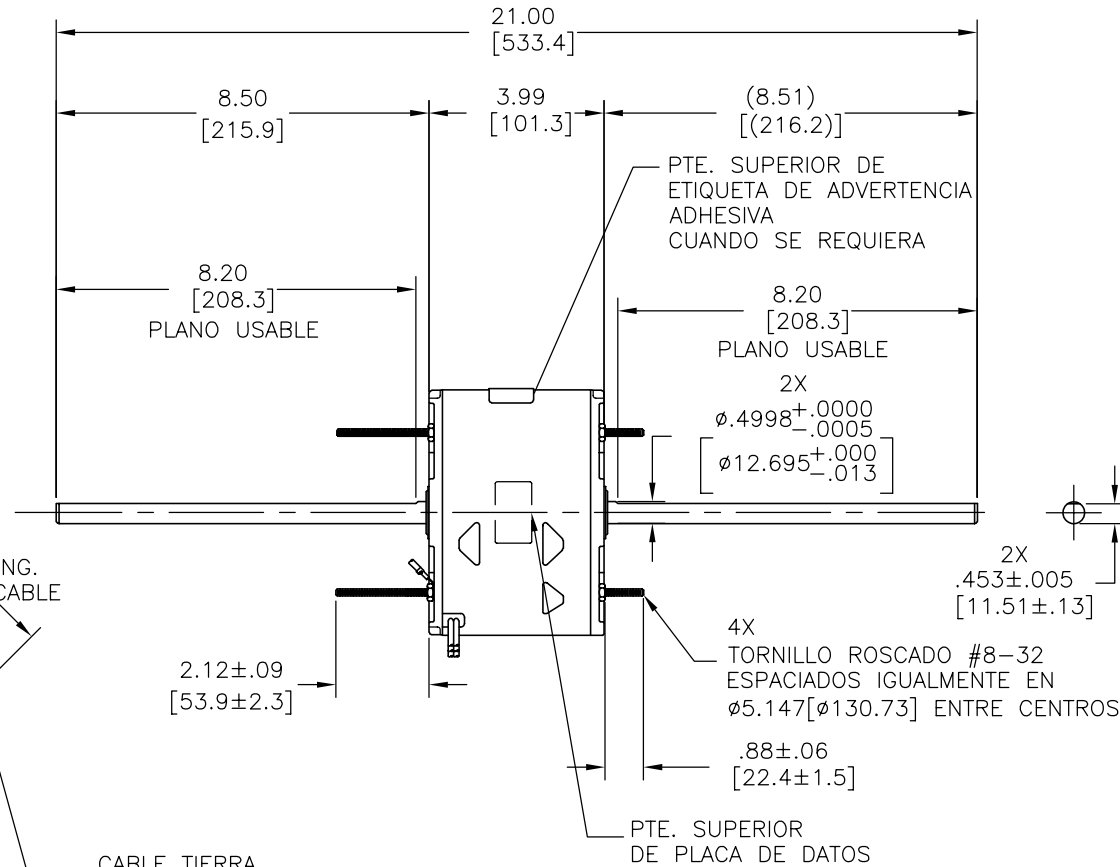
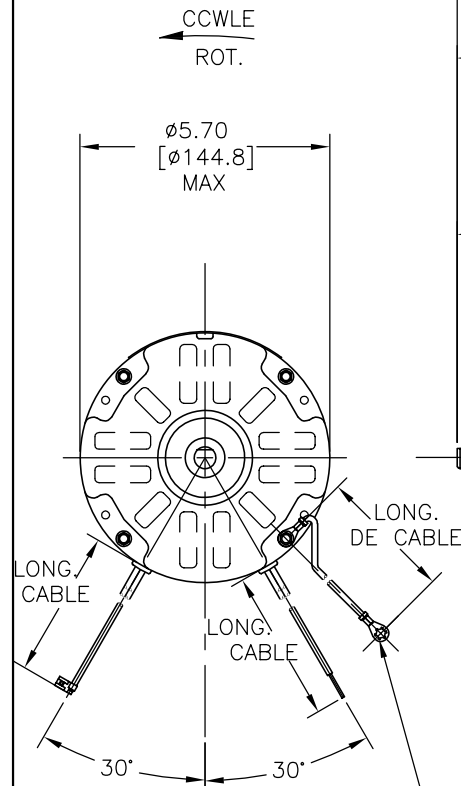
POSICION DEL MONTAJE: TODOS ANGULOS

**INFORMACION ELECTRICA:**

SOBRECARGA DEL PROTECTOR: REINICIO AUTOMATIC (T.I. 7AM 036)

CABLES: NO. 18 GA., .06 [1.5] THK. PVC 105°C AISLAM.

CABLE DE TIERRA: NO. 18 GA., .03 [.8] THK. (VERDE) AISLAM.



INFORMACION DE PLACA DE DATOS	DIAGRAMA DE CONEXION EXTRNA
MODEL NO.: F48Z29A01 CUST. P/N: 661A HP: 1/4,1/6,1/8 ROT.: CCWLE RPM: 1625 3SPD TYPE: UF FRAME: 48Y VOLTS: 115 PH: 1 AMPS: 3.0,2.3,1.9 HZ: 60 INS.: B AMB.: 60 °C DUTY: AIR OVER CODE: - CAP.: 5 MFD/370V ENCL: SEMI-ENCL UL LOGO CSA LOGO THERMALLY PROTECTED	

COLOR	LONGITUD	TERMINAL O LONGITUD DE DESFORRE
VERDE/AMAR. (TIERRA)	11.0/13.0 [279/330]	#10 OJAL
CAFE	23.0/25.0 [584/635]	.25[6.4] BANDERA
CAFE/BLANCO	23.0/25.0 [584/635]	.25[6.4] BANDERA
BLANCO	23.0/25.0 [584/635]	.50[12.7] DESFORRE
NEGRO	23.0/25.0 [584/635]	.50[12.7] DESFORRE
AZUL	23.0/25.0 [584/635]	.50[12.7] DESFORRE
ROJO	23.0/25.0 [584/635]	.50[12.7] DESFORRE

DE CARCASA - OLE	SEMI-CERRADO
DE TAPA - OLE	ABIERTO
DE CARCASA - LE	SEMI-CERRADO
DE TAPA - LE	ABIERTO

CLIENTE	DISTRIBUTION SERVICES
---------	-----------------------

CURVAS DE FUNCIONAMIENTO	TORSION @--- RPM (25°C)	MUESTRA APROBADA	COMPONENTE UL	CSA
C32699	12.8 OZ. FT.	0603160C	#ARCHIVO PRGY2	CLASE # 4211-01

**CARACTERISTICAS DE GEOMETRIA Y SIMBOLOS**

- PLANICIDAD
- RECTITUD
- ANGULARIDAD
- PERPENDICULARIDAD (A ESQUADRA)
- PARALELISMO
- REDONDEZ (CIRCULARIDAD)
- CILINDRICIDAD
- PERFIL DE CUALQUIER SUPERFICIE
- PERFIL DE CUALQUIER LINEA
- VARIACION
- POSICION REAL
- CONCENTRICIDAD
- SIMETRIA

A.O. SMITH PROVEE ASISTENCIA TECNICA A NUESTROS CLIENTES EN VARIAS AREAS. DESDE QUE A.O. SMITH NO RECIBE TODOS LOS DATOS EN RELACION AL USO Y A LA APLICACION DEL MOTOR, LA APLICACION ADECUADA DEL MOTOR DEBE SER DETERMINADA POR EL CLIENTE.

DIMENSIONES SIN TOLERANCIA SON DE REFERENCIA SOLAMENTE

DIBUJADO POR: ZHU HONG  
 05-24-2007  
 APROBADO POR:  
 TERCER ANGULO DE PROYECCION  
 FECHA EDS: 01-21-2007  
 REV. FORMATO: E  
 CONFIDENCIAL: ESTE DIBUJO Y SU INFORMACION SON PROPIEDAD DE USO EXCLUSIVO Y CONFIDENCIAL DE A.O. SMITH CORP. Y NO DEBERAN SER REVELADOS, DUPLICADOS, DISTRIBUIDOS O USARSE DE OTRA MANERA SIN EL CONSENTIMIENTO ESCRITO DE A.O. SMITH CORP. -TODOS LOS DERECHOS RESERVADOS. ASME Y14.5M 1994

**A.O. SMITH**  
 ELECTRICAL PRODUCTS COMPANY  
 TIPP CITY, OHIO  
 A DIVISION OF A. O. SMITH CORPORATION  
 COPYRIGHT 1995  
 DESCRIPCION:  
 TAMAÑO: C  
 NUMERO DE DIBUJO:  
 ESCALA: NONE  
 HOJA: 1

4

3

2

1

4

3

2

1

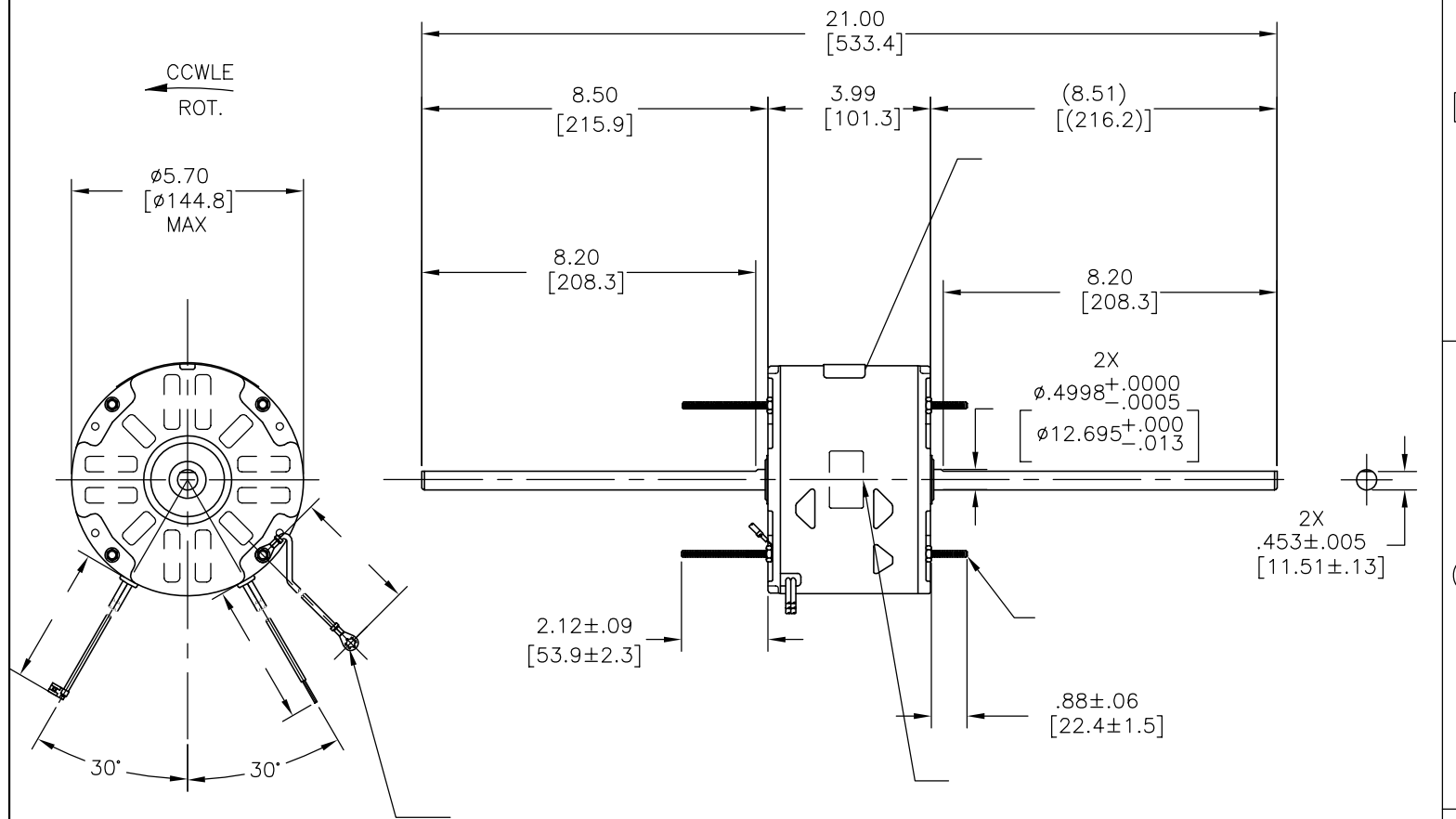
总要求:

轴跳动: .001/1 [.03/25.4] (外伸轴)  
 端部窜动量: .010 - .063 [.25 - 1.60]  
 轴承: 含油轴承  
 安装位置: 水平

电气数据:

过载保护: 自动复位 (T. I. 7AM 036)  
 引线: 18GA, 厚.06[1.5] 125°C 绝缘  
 接地线: 16GA, 厚.03[0.8] 绿色/黄色绝缘

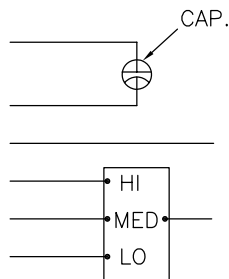
版本	更改通知号	项目号	编制	日期	批准	日期
B		03480101	Teresi	10-05-2007	CContr	10-12-2007



铭牌数据

外部连接详图

MODEL NO.: F48Z29A01  
 CUST. P/N: 661A  
 HP: 1/4, 1/6, 1/8  
 ROT.: CCWLE  
 RPM: 1625 3SPD  
 TYPE: UF  
 FRAME: 48Y  
 VOLTS: 115  
 PH: 1  
 AMPS: 3.0, 2.3, 1.9  
 HZ: 60  
 INS.: B  
 AMB.: 60 °C  
 DUTY: AIR OVER  
 CODE: -  
 CAP.: 5 MFD/370V  
 ENCL: SEMI-ENCL  
 UL LOGO  
 CSA LOGO  
 THERMALLY PROTECTED



614131-296

	11.0/13.0 [279/330]	
	23.0/25.0 [584/635]	
	23.0/25.0 [584/635]	
	23.0/25.0 [584/635]	
	23.0/25.0 [584/635]	
	23.0/25.0 [584/635]	
	23.0/25.0 [584/635]	
	23.0/25.0 [584/635]	

颜色 长度 端子或剥线长度

非引线端机壳	
非引线端端盖	
引线端机壳	
引线端端盖	

用户 DISTRIBUTION SERVICES

A. O. SMITH在个别领域为客户  
 提供技术支持。鉴于A. O. SMITH  
 未收到任何涉及电机使用和  
 应用环境的数据，电机的适用性  
 由客户自己决定。

未注公差尺寸仅供参考。

绘图: ZHU HONG 05-24-2007

批准:

第三角投影

机密: 本图纸及相关信息所有权归A. O. SMITH公司所有。  
 未经A. O. SMITH公司书面授权，不得泄露、复制、传播或作  
 其他用途。--版权所有

ASME Y14.5M 1994

A. O. SMITH  
 ELECTRICAL PRODUCTS COMPANY A DIVISION OF A. O. SMITH CORPORATION  
 TIPP CITY, OHIO COPYRIGHT 1995

名称

图幅 C 图号

比例 NONE

页号 1

- 形位公差
- 平面度
- 直线度
- ∠ 倾斜度
- ⊥ 垂直度
- // 平行度
- 圆度
- ⊘ 圆柱度
- △ 面轮廓度
- ∩ 线轮廓度
- ↗ 圆跳动
- ⊕ 位置度
- ◎ 同轴度
- ≡ 对称度

4

3

2

1