

GRP.	TYPE	FRAME	C	BS	XX	XH	XG	XS	XT	XO	XP
161254-01	CPX	K56	11.44[290.6]	5.38[136.7]	.75[19.1]	4.64[117.9]	2.93[74.4]	3.21[81.5]	4.08[103.6]	3.30[83.8]	4.38[111.3]
161254-02	CPX	G56	11.94[303.3]	5.88[149.4]	.75[19.1]	5.28[134.1]	2.04[51.8]	3.21[81.5]	4.08[103.6]	3.30[83.8]	4.38[111.3]
161254-03	CPX	T56	12.44[316.0]	6.38[162.1]	.75[19.1]	4.64[117.9]	3.68[93.5]	3.21[81.5]	4.08[103.6]	3.30[83.8]	4.38[111.2]
161254-04	CPX	K56	11.44[290.6]	5.38[136.7]	.75[19.1]	4.64[117.9]	3.57[90.7]	2.96[75.2]	4.08[103.6]	3.18[80.8]	4.23[107.4]
161254-05	CPX	T56	12.44[316.0]	6.38[162.1]	---	4.64[117.9]	3.68[93.5]	3.21[81.5]	4.08[103.6]	3.30[83.8]	4.38[111.2]

D

D

C

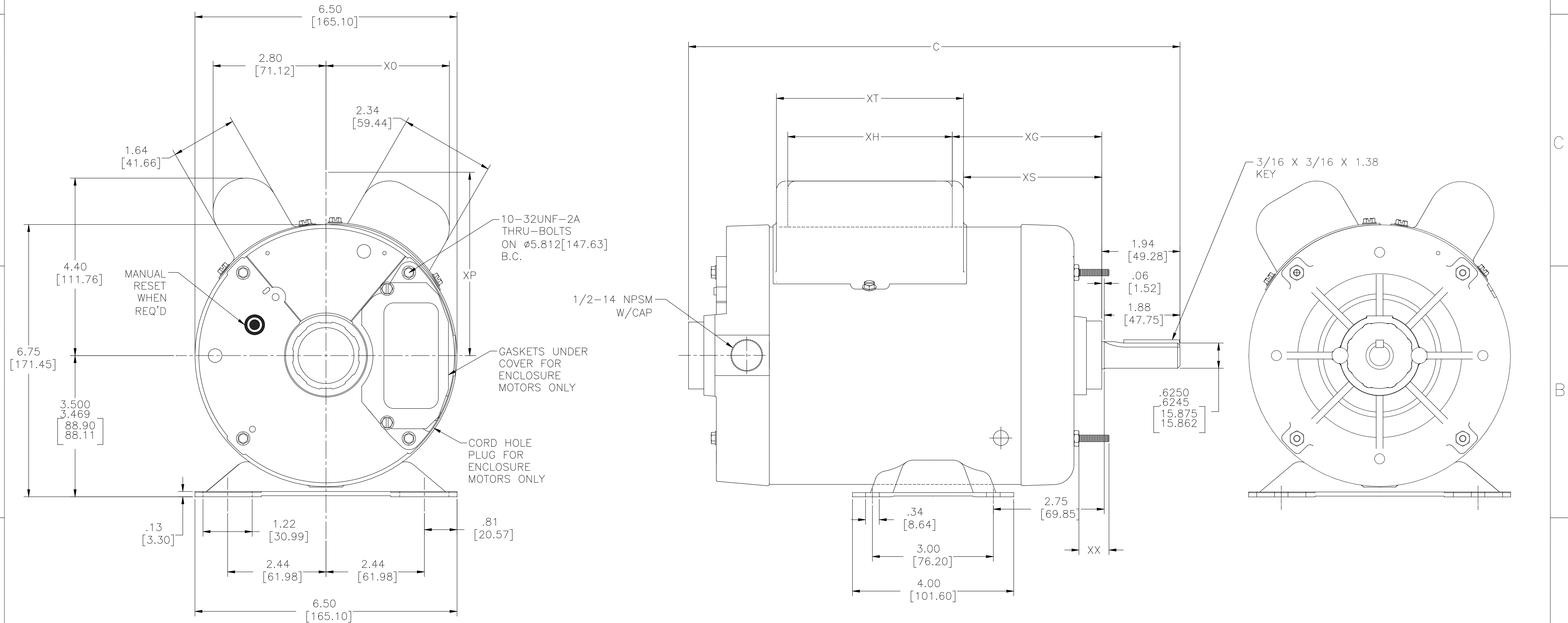
C

B

B

A

A



DRAWING REVISION K 0098987	REVISION BY A. LITTLE/JOHN J. HESS	DATE 08-15-2016 08-19-2016	TOLERANCES UNLESS OTHERWISE SPECIFIED DEC. INCH mm ANGLE .X ±0.1 [±2.5] ±0.5° .XX ±0.02 [±0.5] .XXX ±0.005 [±0.127] .XXXX ±0.0005 [±0.0127]	DRAWN BY M.H.	DATE 02-26-1981	APPROVED BY J. HESS	DESCRIPTION MODEL-CFHP-56FR OUTLINE
THRU-BOLT CHANGE			REMOVE BURRS & BREAK SHARP EDGES .003/.015 [0.076/.381] CORNER FILLETS .02 [51] MACHINED SURFACES .002 INCH [51] mm	REFERENCE	MATERIAL	PROCESS/FINISH	THIRD ANGLE PROJECTION
COPYRIGHT REGAL BELLOIT AMERICA, INC. ALL RIGHTS RESERVED. PROPRIETARY AND CONFIDENTIAL INFORMATION. THIS DOCUMENT IS THE PROPERTY OF REGAL BELLOIT AMERICA, INC. (OWNER) AND CONTAINS OWNER'S PROPRIETARY INFORMATION. ANY REPRODUCTION OR OTHER FORM RESERVE IT IS REMAIN BY RECEIVING IT TO AGREE THAT IT AND/OR ANY PART OF IT, SHALL NOT BE DISCLOSED TO ANY PERSON, CORPORATION OR OTHER ENTITY, AND/OR USED, EXCEPT AS EXPRESSLY APPROVED IN WRITING IN ADVANCE BY OWNER. THIS DOCUMENT SHALL BE RETURNED TO OWNER UPON REQUEST. IT MAY BE SUBJECT TO CERTAIN RESTRICTIONS UNDER APPLICABLE EXPORT CONTROL LAWS AND REGULATIONS.			SIZE DWG NO D 161254	SHEET 1			

8	7	6	5	4	3	2	1
---	---	---	---	---	---	---	---