

4

3

2

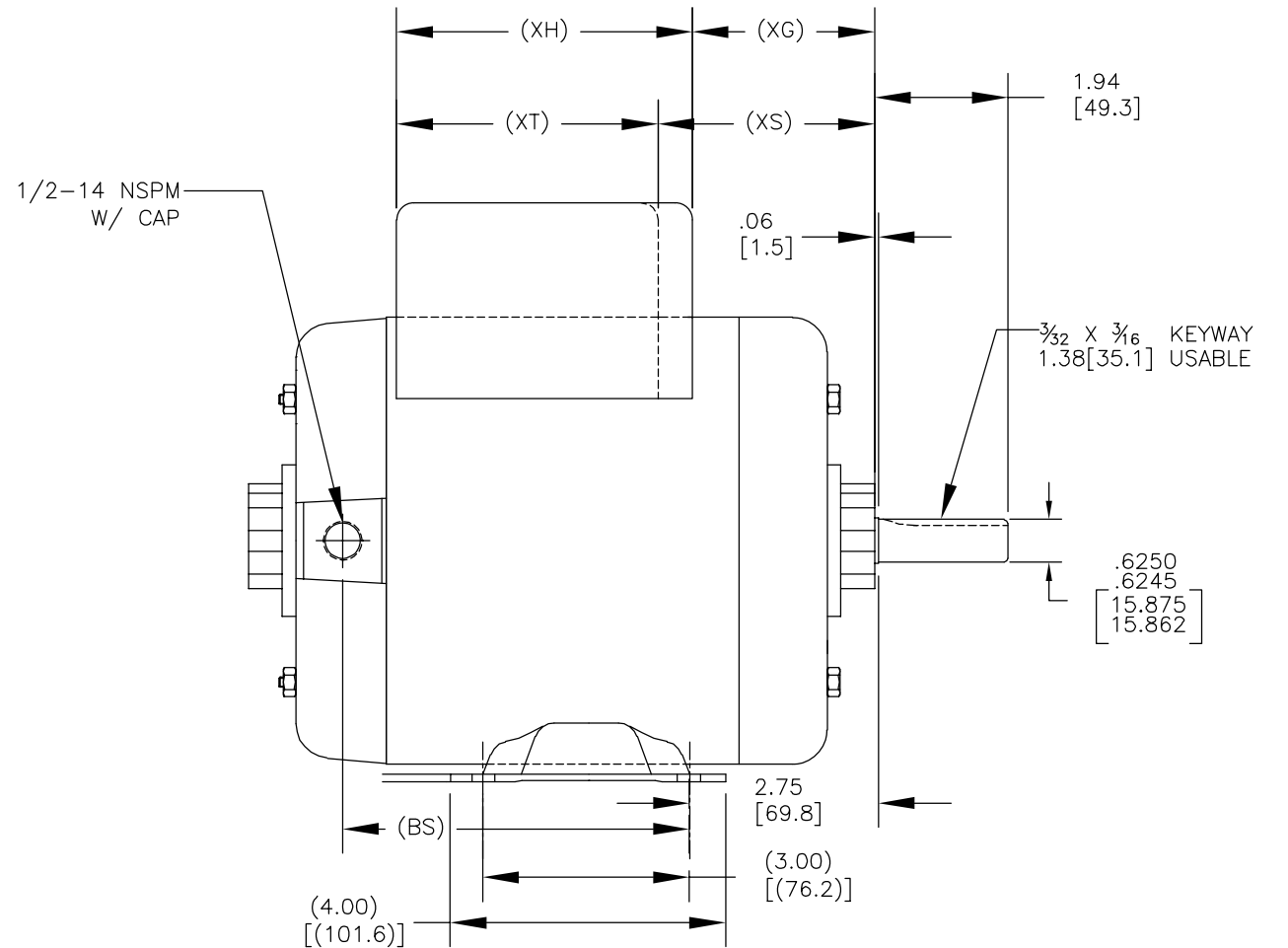
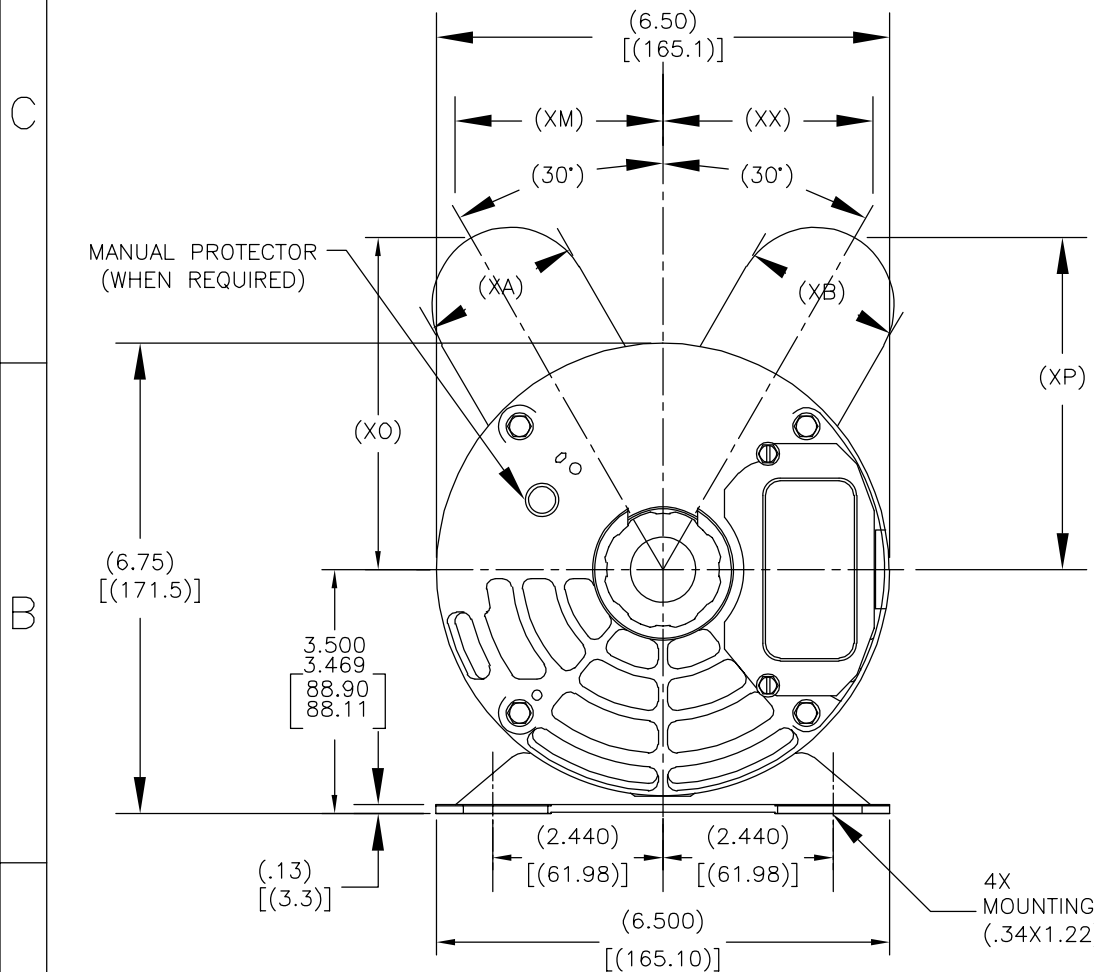
1

REV	ECO	REV BY	DATE	APPD	DATE
N	ECO-0025365	T.HUANG	04-17-2012	B.C.SHEN	04-17-2012

GRP.	TYPE	FRAME	FORM	C	(BS)	(XA)	(XB)	(XG)	(XH)	(XM)	(XX)	(XO)	(XP)	(XS)	(XT)
-01	CP	N56	K	13.19 [335.0]	7.12 [180.8]	2.01 [51.1]	2.27 [57.7]	3.72 [94.5]	5.30 [134.6]	3.11 [79.0]	3.33 [84.6]	4.65 [118.1]	4.91 [124.7]	3.97 [100.8]	5.06 [128.5]
-02	CP	U56	K	12.94 [328.7]	6.87 [174.5]	2.01 [51.1]	2.27 [57.7]	3.47 [88.1]	5.30 [134.6]	3.11 [79.0]	3.33 [84.6]	4.65 [118.1]	4.91 [124.7]	3.72 [94.5]	5.06 [128.5]
-03	CP	M56	K	12.69 [322.3]	6.62 [168.1]	2.01 [51.1]	2.01 [51.1]	4.47 [113.5]	4.06 [103.1]	3.10 [78.74]	3.10 [78.74]	4.64 [117.9]	4.64 [117.9]	3.47 [88.1]	5.06 [128.5]
-04	CP	L56	K	12.19 [309.6]	6.11 [155.2]	2.01 [51.1]	1.64 [41.7]	3.95 [100.3]	4.08 [103.6]	3.12 [79.2]	4.34 [110.2]	4.66 [118.4]	4.34 [110.2]	2.96 [75.2]	5.06 [128.5]
-05	CP	M56	K	12.69 [322.3]	6.62 [168.1]	2.01 [51.1]	2.27 [57.7]	3.22 [81.8]	5.30 [134.6]	3.11 [79.0]	3.33 [84.6]	4.65 [118.1]	4.91 [124.7]	3.47 [88.1]	5.06 [128.5]
-06	CP	K56	K	11.44 [290.6]	5.36 [136.1]	2.01 [51.1]	2.01 [51.1]	3.22 [81.8]	4.06 [103.1]	3.10 [78.74]	3.10 [78.74]	4.64 [117.9]	4.64 [117.9]	2.22 [56.4]	5.06 [128.5]
-07	CP	K56	K	11.44 [290.6]	5.36 [136.1]	2.27 [57.7]	2.01 [51.1]	3.22 [81.8]	4.06 [103.1]	3.10 [78.74]	3.10 [78.74]	4.64 [117.9]	4.64 [117.9]	1.97 [50.0]	5.06 [128.5]
-08	CP	M56	K	12.69 [322.3]	6.62 [168.1]	2.01 [51.1]	1.64 [41.7]	4.46 [113.3]	4.08 [103.6]	3.25 [82.6]	2.84 [71.4]	4.90 [124.5]	4.33 [110.0]	3.47 [88.1]	5.06 [128.5]

ALL DIMENSIONS SHOWN IN PARENTHESIS ARE REFERENCE DIMENSIONS. ALL OTHER DIMENSIONS ARE TOLERANCED PER THE FOLLOWING CHART UNLESS OTHERWISE SPECIFIED.

"C" DIM. = ±.055[±1.40]
 SHAFT EXT. = ±.034[±.86]
 LEAD LENGTHS = ±1.00[±25.4]
 EXTENDED
 THRU-BOLTS = ±.050[±1.27]
 ANGULAR DIMS = ± 2'



GEOMETRIC CHARACTERISTICS & SYMBOLS

- ▭ FLATNESS
- STRAIGHTNESS
- ∠ ANGULARITY
- ⊥ PERPENDICULARITY (SQUARENESS)
- ∥ PARALLELISM
- ROUNDNESS (CIRCULARITY)
- ⊘ CYLINDRICITY
- △ PROFILE OF ANY SURFACE
- ∩ PROFILE OF ANY LINE
- ↗ RUNOUT
- ⊕ TRUE POSITION
- ◎ CONCENTRICITY
- = SYMMETRY

ASME Y14.5M 1994

UNLESS OTHERWISE SPECIFIED DIM. TOLERANCES ARE AS FOLLOWS:

	X	XX	XXX	XXXX
INCH	±.1	±.02	±.005	±.0005
mm	±0.5	±0.13	±0.013	

ANG. ±.50 DEG
 REMOVE BURRS & BREAK SHARP EDGES:
 INCH .003-.015 mm 0.1-0.4
 CORNER FILLETS TO:
 INCH .020 mm 0.5
 MACHINE SURFACES:
 INCH 125 mm 3.2

METRIC DIMS. SHOWN IN [BRACKETS]

DR BY: SAS 07-18-1990

APPD: MLC 07-27-1990

THIRD ANGLE PROJECTION

EDS DATE 11-11-2011
 FORMAT REV G

CONFIDENTIAL: THIS DRAWING AND ITS INFORMATION ARE THE EXCLUSIVE AND CONFIDENTIAL PROPERTY OF REGAL-BELOIT CORPORATION AND ARE NOT TO BE DISCLOSED, DUPLICATED, DISTRIBUTED OR OTHERWISE USED WITHOUT THE WRITTEN CONSENT OF REGAL-BELOIT CORPORATION. -ALL RIGHTS RESERVED.

REGAL-BELOIT CORPORATION

DESCRIPTION: OUTLINE

SIZE: C DWG NO: 179100

SCALE: NONE SHEET: 1

4

3

2

1

4

3

2

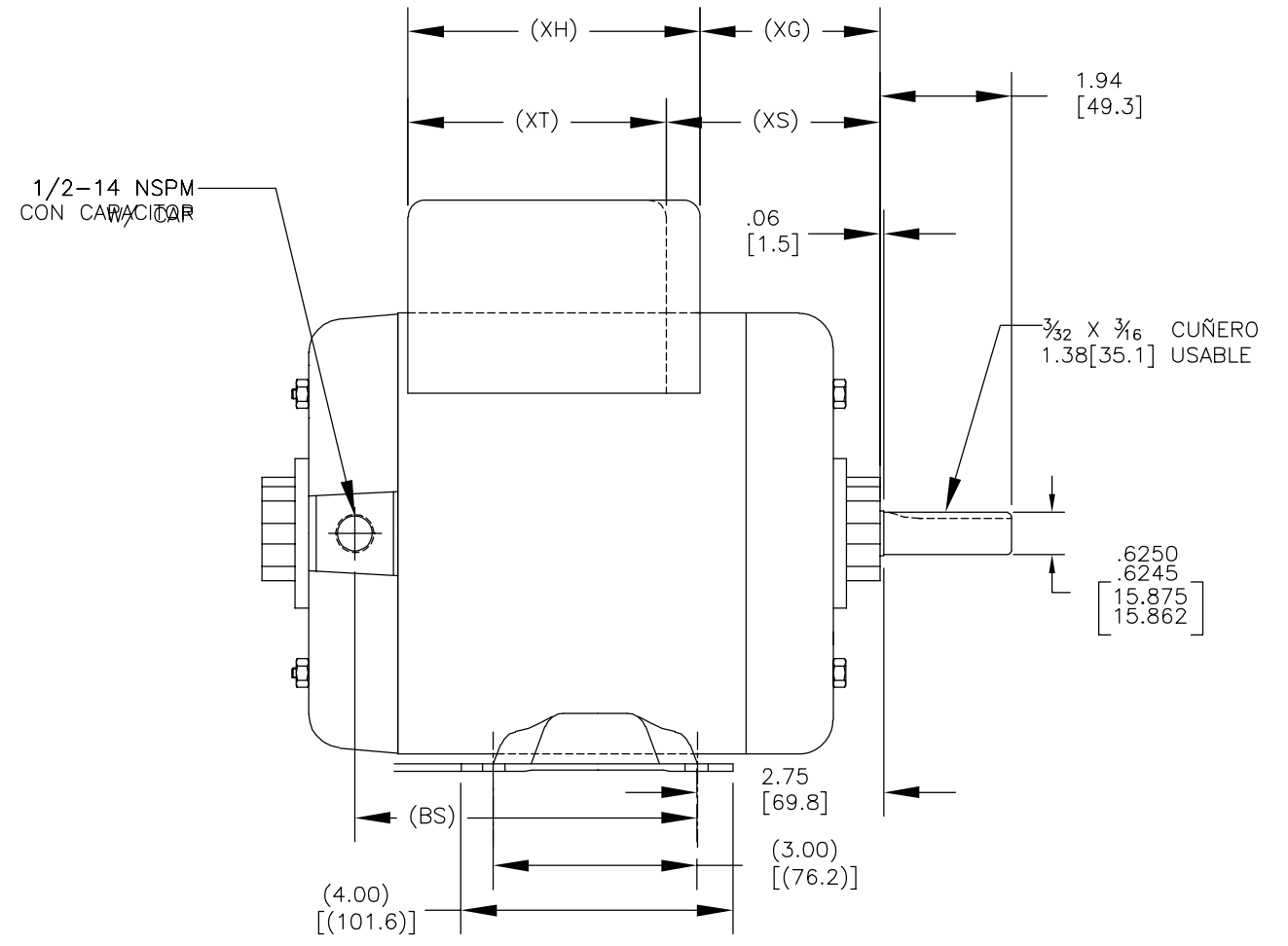
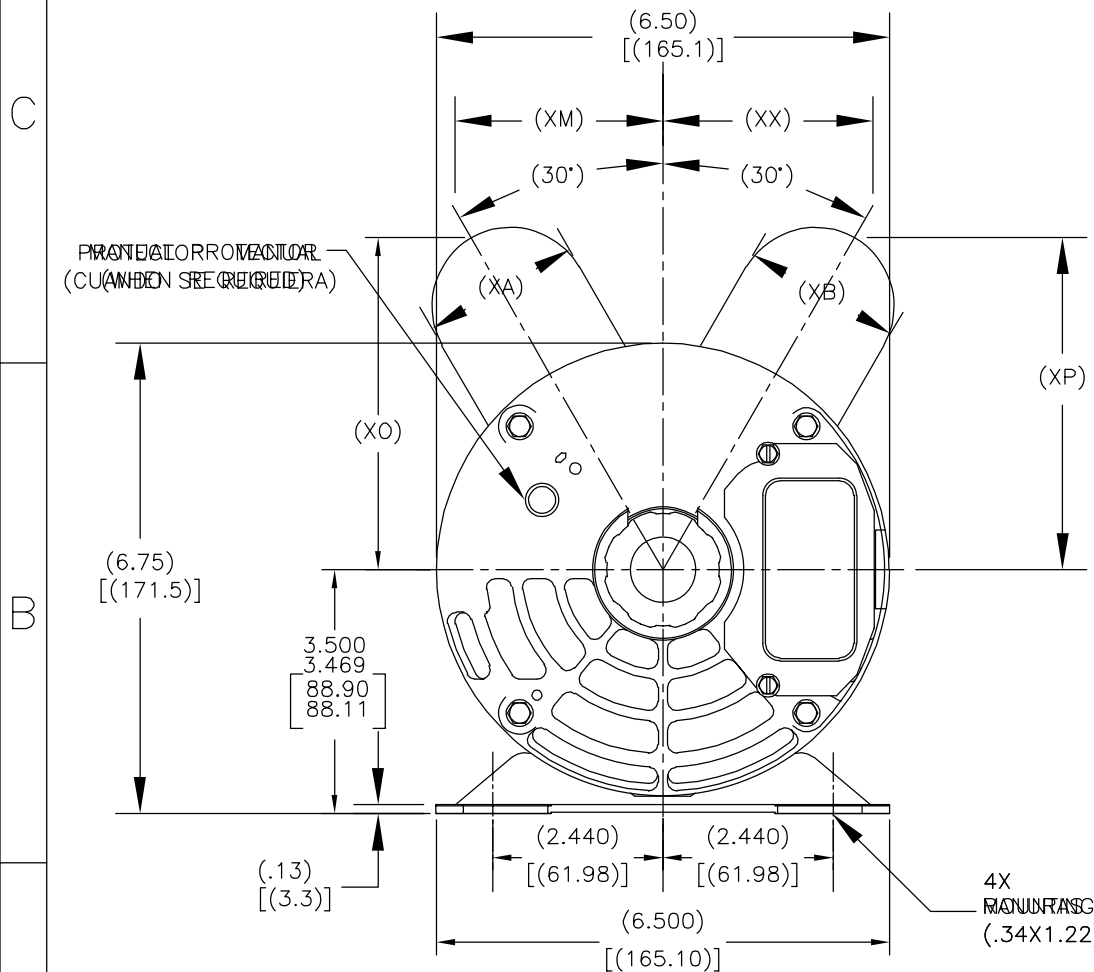
1

REVISION:	ECO	REVISADO POR:	FECHA:	APROBADO POR:	FECHA:
N	ECO-0025365	T.HUANG	04-17-2012	B.C.SHEN	04-17-2012

GRP.	TIPO	CARCAZA	FORMA	C	(BS)	(XA)	(XB)	(XG)	(XH)	(XM)	(XX)	(XO)	(XP)	(XS)	(XT)
-01	CP	N56	K	13.19 [335.0]	7.12 [180.8]	2.01 [51.1]	2.27 [57.7]	3.72 [94.5]	5.30 [134.6]	3.11 [79.0]	3.33 [84.6]	4.65 [118.1]	4.91 [124.7]	3.97 [100.8]	5.06 [128.5]
-02	CP	U56	K	12.94 [328.7]	6.87 [174.5]	2.01 [51.1]	2.27 [57.7]	3.47 [88.1]	5.30 [134.6]	3.11 [79.0]	3.33 [84.6]	4.65 [118.1]	4.91 [124.7]	3.72 [94.5]	5.06 [128.5]
-03	CP	M56	K	12.69 [322.3]	6.62 [168.1]	2.01 [51.1]	2.01 [51.1]	4.47 [113.5]	4.06 [103.1]	3.10 [78.74]	3.10 [78.74]	4.64 [117.9]	4.64 [117.9]	3.47 [88.1]	5.06 [128.5]
-04	CP	L56	K	12.19 [309.6]	6.11 [155.2]	2.01 [51.1]	1.64 [41.7]	3.95 [100.3]	4.08 [103.6]	3.12 [79.2]	4.34 [110.2]	4.66 [118.4]	4.34 [110.2]	2.96 [75.2]	5.06 [128.5]
-05	CP	M56	K	12.69 [322.3]	6.62 [168.1]	2.01 [51.1]	2.27 [57.7]	3.22 [81.8]	5.30 [134.6]	3.11 [79.0]	3.33 [84.6]	4.65 [118.1]	4.91 [124.7]	3.47 [88.1]	5.06 [128.5]
-06	CP	K56	K	11.44 [290.6]	5.36 [136.1]	2.01 [51.1]	2.01 [51.1]	3.22 [81.8]	4.06 [103.1]	3.10 [78.74]	3.10 [78.74]	4.64 [117.9]	4.64 [117.9]	2.22 [56.4]	5.06 [128.5]
-07	CP	K56	K	11.44 [290.6]	5.36 [136.1]	2.27 [57.7]	2.01 [51.1]	3.22 [81.8]	4.06 [103.1]	3.10 [78.74]	3.10 [78.74]	4.64 [117.9]	4.64 [117.9]	1.97 [50.0]	5.06 [128.5]
-08	CP	M56	K	12.69 [322.3]	6.62 [168.1]	2.01 [51.1]	1.64 [41.7]	4.46 [113.3]	4.08 [103.6]	3.25 [82.6]	2.84 [71.4]	4.90 [124.5]	4.33 [110.0]	3.47 [88.1]	5.06 [128.5]

TODAS LAS DIM. MOSTRADAS EN PARENTESIS SON DIMENSIONES DE REFERENCIA. TODAS LAS DEMAS DIMENSIONES TIENEN TOLERANCIA DE DE ACUERDO A LA SIGUIENTE TABLA SOLAMENTE SOLO QUE SE ESPECIFIQUE OTRA MANERA

"C" DIM. = ±.055[±1.40]
 EXT. FLECHA = ±.034[±.86]
 LONG. CABLES = ±1.00[±25.4]
 EXTENDIDOS
 TORNILLOS = ±.050[±1.27]
 PASADOS
 DIM. ANGULAR = ± 2°



CARACTERISTICAS DE GEOMETRIA Y SIMBOLOS	
□	PLANICIDAD
—	RECTITUD
∠	ANGULARIDAD
⊥	PERPENDICULARIDAD (A ESCUADRA)
∥	PARALELISMO
○	REDONDEZ (CIRCULARIDAD)
⊘	CILINDRICIDAD
△	PERFIL DE CUALQUIER SUPERFICIE
∧	PERFIL DE CUALQUIER LINEA
↑	VARIACION
⊙	POSICION REAL
◎	CONCENTRICIDAD
=	SIMETRIA

ASME Y14.5M 1994

A MENOS QUE SE ESPECIFIQUE DE OTRA MANERA, LAS TOLERANCIAS DE LAS DIMS. SON LAS SIGUIENTES:

PULG ±.1 ±.02 ±.005 ±.0005
 mm ±0.5 ±0.13 ±0.013

ANG. ±.50 GRADOS
 ELIMINAR REBABAS Y ORILLAS FILOSAS DEL BORDE.

PULG .003-.015 mm 0.1-0.4
 FILETEAR ESQUINA: PULG .020 mm 0.5

MAQUINAR SUPERFICIES
 PULG 125 mm 3.2

DIMS METRICAS MOSTRADAS [PARENTESIS]

DIBUJADO POR:	SAS	07-18-1990
APROBADO POR:	MLC	07-27-1990
TERCER ANGULO DE PROYECCION	⊕	FECHA EDS: 11-11-2011 REV. FORMATO: G
CONFIDENCIAL: ESTE DIBUJO Y SU INFORMACION SON PROPIEDAD DE USO EXCLUSIVO Y CONFIDENCIAL DE REGAL-BELOIT CORPORATION. Y NO DEBERAN SER REVELADOS, DUPLICADOS, DISTRIBUIDOS O USARSE DE OTRA MANERA SIN EL CONSENTIMIENTO ESCRITO DE REGAL-BELOIT CORPORATION. -TODOS LOS DERECHOS RESERVADOS.		

REGAL-BELOIT CORPORATION

DESCRIPCION: **OUTLINE**

TAMAÑO: C NUMERO DE DIBUJO: 179100

ESCALA: NONE HOJA: 1

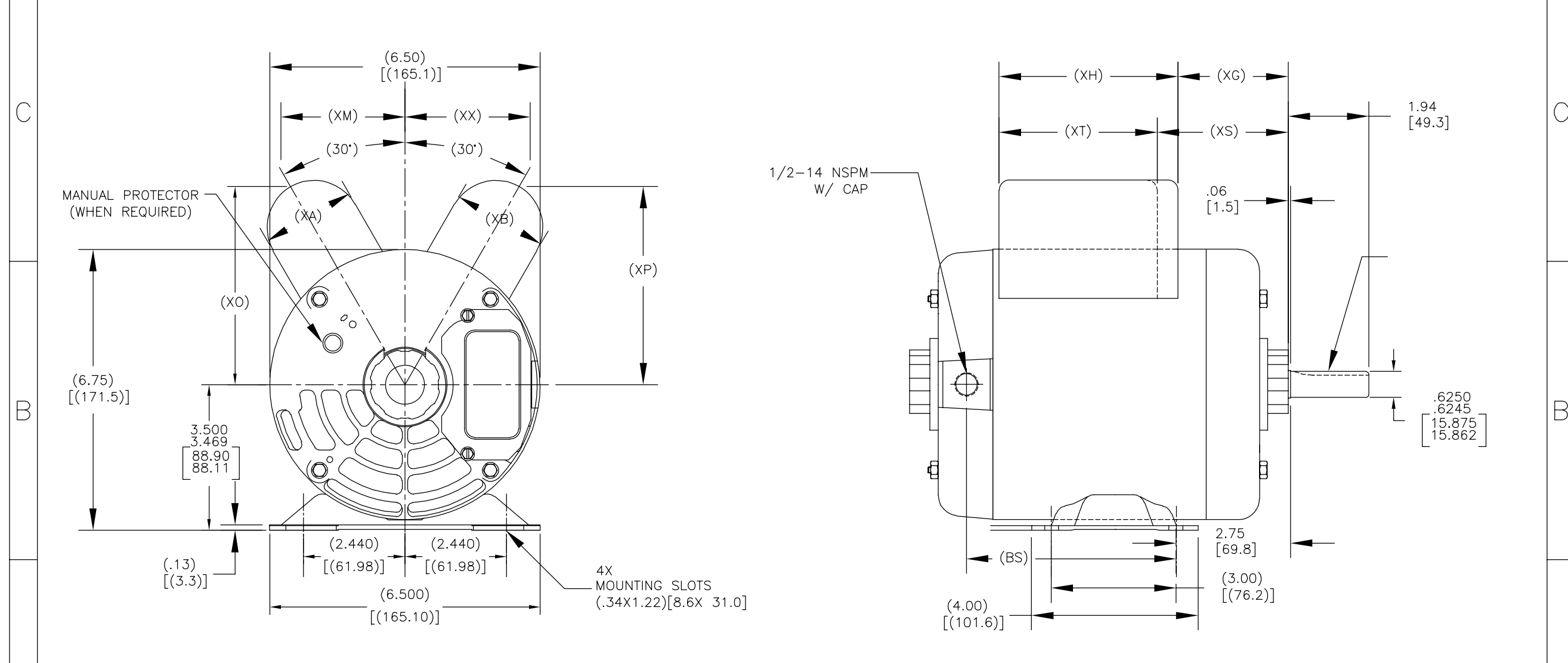
4

3

2

1

				3										2		1	
				ECO										编制	日期	批准	日期
				ECO-0025365										T.HUANG	04-17-2012	B.C.SHEN	04-17-2012
GRP.				C	(BS)	(XA)	(XB)	(XG)	(XH)	(XM)	(XX)	(XO)	(XP)	(XS)	(XT)		
-01	CP	N56	K	13.19 [335.0]	7.12 [180.8]	2.01 [51.1]	2.27 [57.7]	3.72 [94.5]	5.30 [134.6]	3.11 [79.0]	3.33 [84.6]	4.65 [118.1]	4.91 [124.7]	3.97 [100.8]	5.06 [128.5]		
-02	CP	U56	K	12.94 [328.7]	6.87 [174.5]	2.01 [51.1]	2.27 [57.7]	3.47 [88.1]	5.30 [134.6]	3.11 [79.0]	3.33 [84.6]	4.65 [118.1]	4.91 [124.7]	3.72 [94.5]	5.06 [128.5]		
-03	CP	M56	K	12.69 [322.3]	6.62 [168.1]	2.01 [51.1]	2.01 [51.1]	4.47 [113.5]	4.06 [103.1]	3.10 [78.74]	3.10 [78.74]	4.64 [117.9]	4.64 [117.9]	3.47 [88.1]	5.06 [128.5]		
-04	CP	L56	K	12.19 [309.6]	6.11 [155.2]	2.01 [51.1]	1.64 [41.7]	3.95 [100.3]	4.08 [103.6]	3.12 [79.2]	4.34 [110.2]	4.66 [118.4]	4.34 [110.2]	2.96 [75.2]	5.06 [128.5]		
-05	CP	M56	K	12.69 [322.3]	6.62 [168.1]	2.01 [51.1]	2.27 [57.7]	3.22 [81.8]	5.30 [134.6]	3.11 [79.0]	3.33 [84.6]	4.65 [118.1]	4.91 [124.7]	3.47 [88.1]	5.06 [128.5]		
-06	CP	K56	K	11.44 [290.6]	5.36 [136.1]	2.01 [51.1]	2.01 [51.1]	3.22 [81.8]	4.06 [103.1]	3.10 [78.74]	3.10 [78.74]	4.64 [117.9]	4.64 [117.9]	2.22 [56.4]	5.06 [128.5]		
-07	CP	K56	K	11.44 [290.6]	5.36 [136.1]	2.27 [57.7]	2.01 [51.1]	3.22 [81.8]	4.06 [103.1]	3.10 [78.74]	3.10 [78.74]	4.64 [117.9]	4.64 [117.9]	1.97 [50.0]	5.06 [128.5]		
-08	CP	M56	K	12.69 [322.3]	6.62 [168.1]	2.01 [51.1]	1.64 [41.7]	4.46 [113.3]	4.08 [103.6]	3.25 [82.6]	2.84 [71.4]	4.90 [124.5]	4.33 [110.0]	3.47 [88.1]	5.06 [128.5]		



形位公差 □ 平面度 — 直线度 < 倾斜度 ⊥ 垂直度 // 平行度 ○ 圆度 ⊙ 圆柱度 ⌒ 面轮廓度 ⌒ 线轮廓度 ⌒ 圆跳动 ⊕ 位置度 ⊕ 同轴度 = 对称度	除另有注明 尺寸公差如下: 英寸 X XX XXX XXXX ±.1 ±.02 ±.005 ±.0005 毫米 ±0.5 ±0.13 ±0.013 角度 ±.50 度 清理毛刺和尖棱 英寸 .003-.015 毫米 0.1-0.4 内圆角 英寸 .020 毫米 0.5 表面粗糙度 英制 125 米制 3.2 米制尺寸显示在 []	绘图: SAS 07-18-1990 批准: MLC 07-27-1990 第三角投影 图纸格式发布日期 11-11-2011 图纸格式版本 G	名称 OUTLINE 图幅 C 图号 179100 比例 NONE 页号 1	
	ASME Y14.5M 1994	名称 REGAL-BELOIT CORPORATION	名称 OUTLINE	图号 179100
	名称 OUTLINE	图幅 C	图号 179100	比例 NONE
	比例 NONE	图号 179100	页号 1	名称 OUTLINE