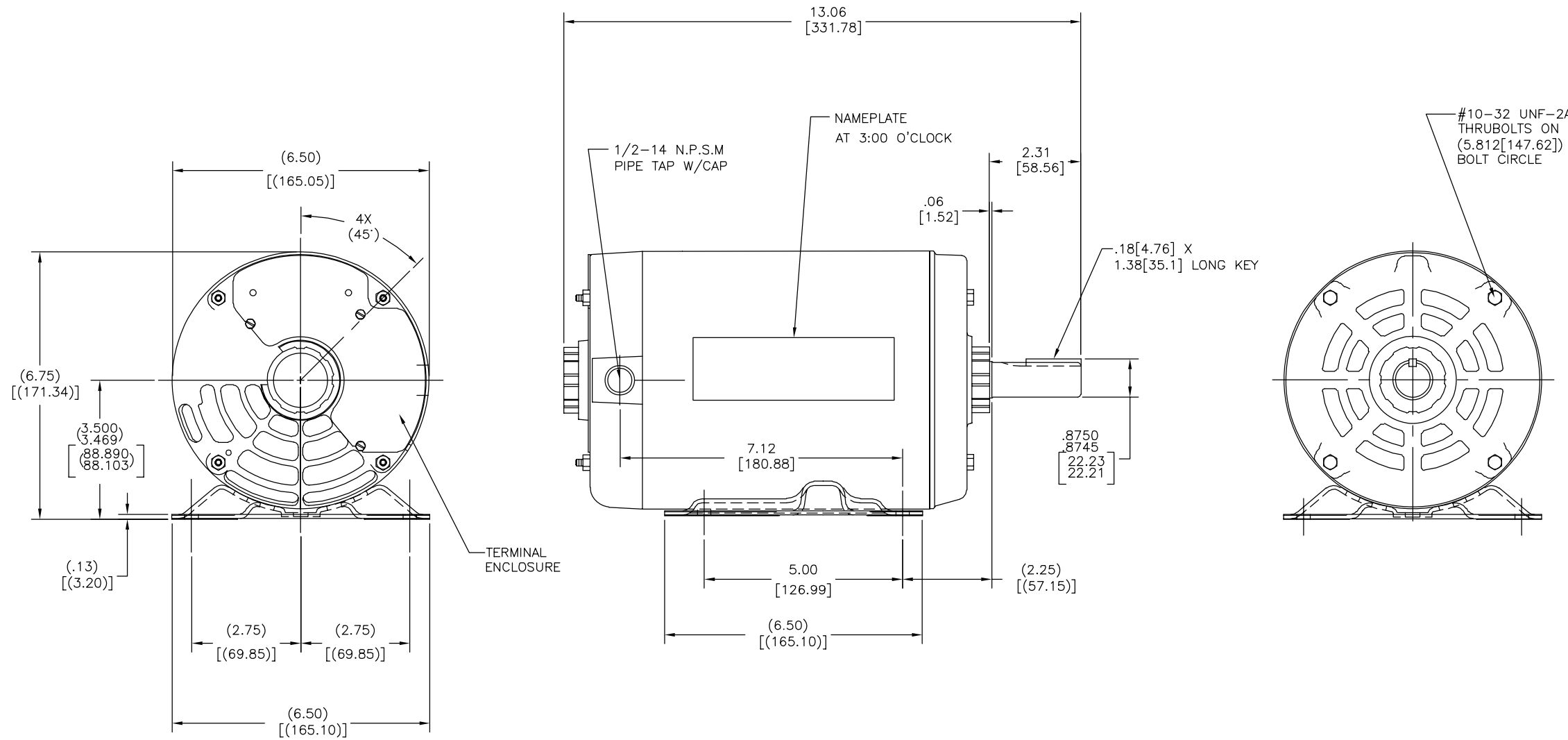


ALL DIMENSION SHOWN IN PARENTHESIS ARE REFERENCE DIMENSIONS. ALL OTHER DIMENSIONS ARE TOLERANCED PER THE FOLLOWING CHART UNLESS OTHERWISE SPECIFIED.



NOTE:
1. FOR APPROXIMATE SHIPPING WEIGHT OF MOTOR ADD %15 TO THE NET WEIGHT

| | | | | | |
|---|---------------------------|--------------------|---|------------------------|-------------------------------------|
| DRAWING REVISION D | REVISION BY F.NAVARRO | DATE 10-20-2014 | TOLERANCES UNLESS OTHERWISE SPECIFIED DEC. INCH mm ANGLE .X ±0.1 [±2.5] ±0.5° .XX ±0.02 [±0.51] .XXX ±0.005 [±0.127] .XXXX ±0.0005 [±0.0127] | DRAWN BY: TW | Regal Beloit America, Inc. |
| ECO 0061389 | APPROVED BY G.GALVIREZ | DATE 10-20-2014 | REMOVE BURRS & BREAK SHARP EDGES .003/.015 [0.076/.381] CORNER FILLETS .02 [0.51] MACHINED SURFACES .125 [3.175] INCH/mm 3.2 mm SHOWN IN [BRACKETS] | DATE: 05-12-2010 | |
| ECO DESCRIPTION SEE ECO | | | | APPROVED BY: HZ | DESCRIPTION MODEL-IHP OUTLINE |
| COPYRIGHT REGAL BELOIT AMERICA, INC. ALL RIGHTS RESERVED. PROPRIETARY AND CONFIDENTIAL INFORMATION - THIS DOCUMENT IS THE PROPERTY OF REGAL BELOIT AMERICA, INC. (OWNER) AND CONTAINS OWNER'S PROPRIETARY INFORMATION. ANY PERSON, CORPORATION OR OTHER FIRM RECEIVING IT IS DEEMED, BY RECEIVING IT, TO AGREE THAT IT, AND/OR ANY PART OF IT, SHALL NOT BE DISCLOSED TO ANY PERSON, CORPORATION OR OTHER ENTITY, DUPLICATED, AND/OR USED, EXCEPT AS EXPRESSLY APPROVED IN WRITING IN ADVANCE BY OWNER. THIS DOCUMENT SHALL BE RETURNED TO OWNER UPON REQUEST. IT MAY BE SUBJECT TO CERTAIN RESTRICTIONS UNDER APPLICABLE EXPORT CONTROL LAWS AND REGULATIONS. | | | | DATE: 05-12-2010 | MATERIAL - |
| | | | | REFERENCE - | PROCESS/FINISH - |
| | | | | THIRD ANGLE PROJECTION | MATERIAL - |
| | | | | SIZE DWG NO C | M128L |
| | | | | | SHEET 1 |