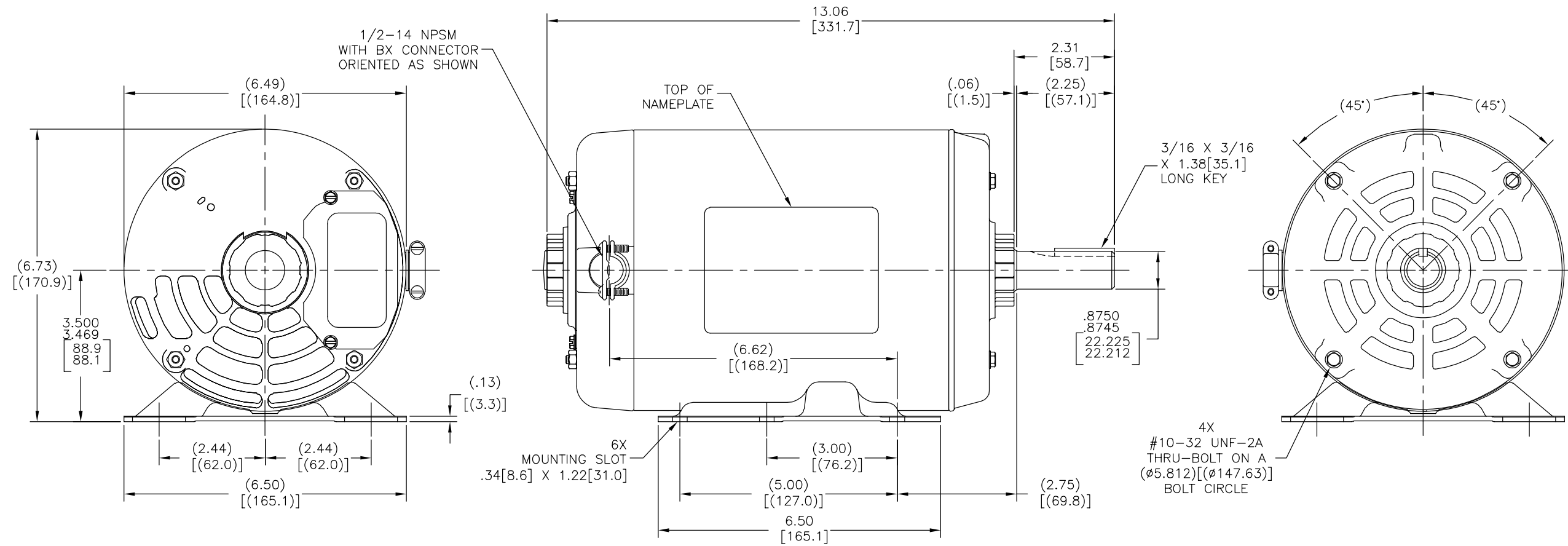


ALL DIMENSIONS SHOWN IN PARENTHESIS ARE REFERENCE DIMENSIONS. ALL OTHER DIMENSIONS ARE TOLERANCED PER THE FOLLOWING CHART UNLESS OTHERWISE SPECIFIED.

"C" DIMENSION = ±.055[1.40]  
 SHAFT EXTENSION = ±.034[.86]  
 LEAD LENGTHS = ±1.00[25.4]  
 EXTENDED THRU-BOLTS = ±.050[1.27]  
 ANGULAR DIMENSIONS = ±2'



DRAWING REVISION C	REVISION BY J.AQUILERA	DATE 01-28-2015	TOLERANCES UNLESS OTHERWISE SPECIFIED DEC: INCH DIM ANGLE	DRAWN BY: D.HOLT	Regal Beloit America, Inc.
0066414	APPROVED BY D.VALENCIANO	DATE 01-28-2015	.X ±0.1 (±2.5) ±0.5° .XX ±0.02 (±0.51) .XXX ±0.005 (±0.127) .XXXX ±0.0005 (±0.0127)	DATE: 08-12-2009	
ECCO DESCRIPTION SEE ECCO			REMOVE BURRS & BREAK SHARP EDGES .003-.015 (.076-.381) CORNER FILLETS .02 (.51) MACHINED SURFACES .125 (3.175) mm SHOWN IN BRACKETS	APPROVED BY: DATE: 08-12-2009	DESCRIPTION MODEL-CFHP-56FR OUTLINE
COPYRIGHT REGAL BELOIT AMERICA, INC. ALL RIGHTS RESERVED. PROPRIETARY AND CONFIDENTIAL INFORMATION - THIS DOCUMENT IS THE PROPERTY OF REGAL BELOIT AMERICA, INC. (ECCO) AND CONTAINS OWNERS' PROPRIETARY INFORMATION. ANY REPRODUCTION OR OTHER USE WITHOUT THE WRITTEN PERMISSION OF REGAL BELOIT AMERICA, INC. IS STRICTLY PROHIBITED. THIS DOCUMENT SHALL BE RETURNED TO OWNER UPON REQUEST. IT MAY BE SUBJECT TO OTHER RESTRICTIONS UNDER APPLICABLE EXPORT CONTROL LAWS AND REGULATIONS.			THIRD ANGLE PROJECTION	REFERENCE	MATERIAL
			SIZE DWG NO D	PROCESS/FINISH	
			H953V1		SHEET 1